



**Byways, Mount View Terrace**  
Stocksfield, NE43 7HL

**youngsRPS** 

# Byways

## Mount View Terrace

### Stocksfield

#### NE43 7HL

An excellent 4 bedroom semi detached, family home in a stunning semi rural setting with extensive mature front and rear gardens.

- Semi detached property
- 4 bedrooms
- Large garden
- Garage/ workshop
- West facing sun room
- Gated driveway
- Immaculately presented
- Energy efficiency rating D



**youngsRPS**

Youngs Hexham 01434 608980

## DESCRIPTION

The entrance hall runs across the front of the property with laminate flooring, a double glazed window to the front, staircase to the first floor with understairs cupboard and a cloak room. The cloak room has fitted storage, the boiler and gas meters.

The kitchen diner is central to the property and is fitted with modern kitchen wall and base cabinets under a granite worksurface, integrated into which is a stainless steel dual sink and drainer with mixer tap. The kitchen has an integrated fridge in the peninsular and spaces for an under counter dishwasher, a full height fridge freezer and electric range cooker with gas hobs, which is set under an extractor hood. The dining area has fitted storage shelving and cupboards, designed into the chimney alcoves. Double, flat folding doors lead through to the sunroom.

The utility room has stone tiled flooring with fitted base cabinets under laminate worksurfaces with integrated stainless steel sink and mixer tap, plumbing for washing machine and space for tumble dryer. The utility room has access to the side car port and ground floor shower room. The ground floor shower room has a shower cubicle, WC, wash hand basin and lino floor finishing. The living room is a bright and inviting room that enjoys, dual front and rear aspects. At the heart of this room is a wood burning stove set into a feature fireplace surround with tiled hearth. Glazed double doors lead to the sunroom to the rear. The sunroom is a great entertaining space with glazed panel door to the rear garden and large picture windows again overlooking the rear patio and garden. Double doors connect this versatile space to both the kitchen and the living room.

The first floor has three generous double bedrooms and a smaller single room as well as a family bathroom. The main bedroom set to the rear has a picture window that overlooks the garden and the countryside beyond. The second double bedroom also set to the rear has fitted wardrobes. The third bedroom is again a generous double room with window overlooking the rear garden.

The family bathroom has three piece bathroom suite comprising of; bath with shower over, vanity unit with wash hand basin, WC. The bathroom has fully tiled walls and lino flooring, a frosted double glazed window to the front and the loft access.

Externally the property has generous gardens to the front with a gated driveway that leads down to the rear of the property. The front garden is mainly gravelled providing parking for several vehicles with mature bedded borders and raised planters. The rear garden is accessed via the car porch to the side of the property and is a great family / entertaining space. The rear garden is mainly laid to lawn with a paved patio area nearest the house, alongside the lawn at the head of the garden is the garage / workshop, beyond which to the rear is a garden shed, green house and raised vegetable beds. The main lawn has a quaint brick and stone built bridge leading to the tiered rear of the garden which has mature borders and gated access to the countryside at the bottom of the garden.

## LOCATION

Situated in the popular village of Stocksfield, the property is located close to the local shops, GP practise, petrol station, cricket field, tennis club and schools, with a full range of retail and leisure facilities as well as major supermarkets available in the Town centre of Prudhoe about 3.5 miles away and Hexham a little over 8 miles away. Stocksfield train station offers additional public transport links, for the commuter rail services west to Carlisle and east to Newcastle Upon Tyne are regularly available in addition to the excellent road networks via the A68 and A69 dual carriageway.

## SERVICES

Mains Water, gas, electricity and drainage.

## CHARGES

Northumberland County Council tax band E

## VIEWINGS

Viewing is strictly by appointment. Arrangements can be made by contacting YoungsRPS, Hexham on 01434 608980.

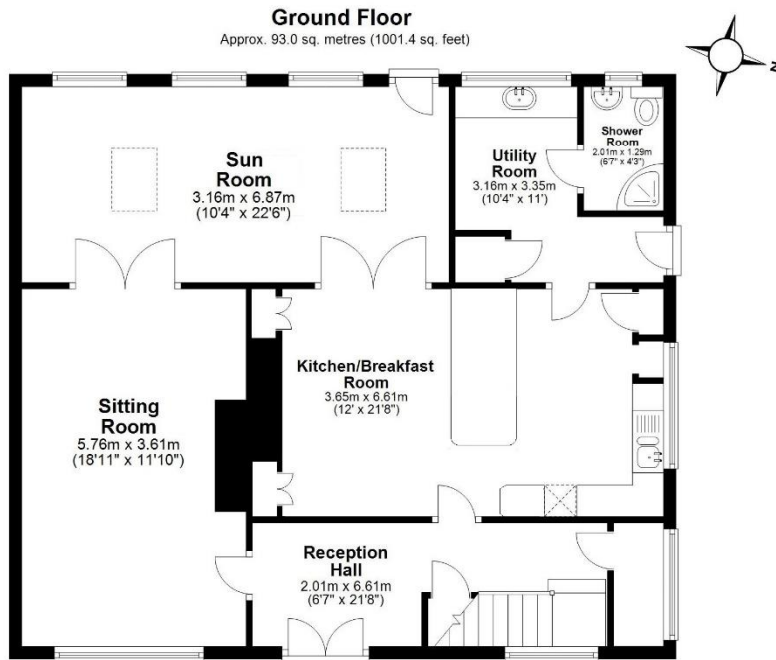
## FREE MARKET APPRAISAL

We would be pleased to provide professional, unbiased advice on the current value and marketing of your existing home.

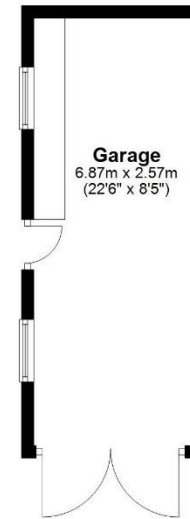




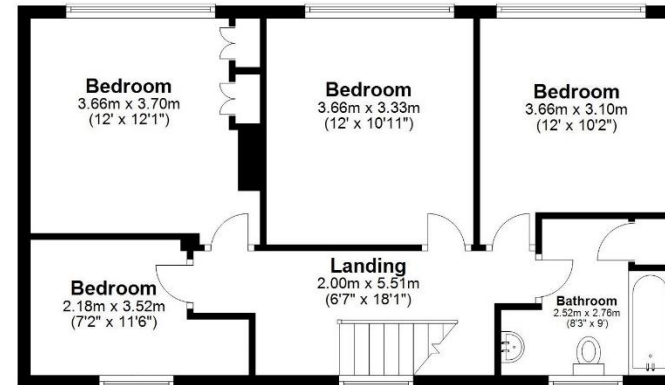




**Garage**  
Approx. 17.7 sq. metres (190.0 sq. feet)



**First Floor**  
Approx. 59.4 sq. metres (639.3 sq. feet)



Total area: approx. 170.1 sq. metres (1830.7 sq. feet)  
**Byways, Mount View Terrace, -**

**IMPORTANT NOTE:** Consumer Protection from Unfair Trading Regulations 2008 and the Business Protection from Misleading Marketing Regulations 2008: We endeavour to make our sales particulars accurate and reliable. They should be considered as general guidance only and do not constitute all or any part of the contract. None of the services, fittings and equipment have been tested. Measurements, where given, are approximate and for descriptive purposes only. Boundaries cannot be guaranteed and must be checked by solicitors prior to exchange of contracts. Prospective buyers and their advisers should satisfy themselves as to the facts, and before arranging an inspection, availability. Further information on points of particular importance can be provided. No person in the employment of YoungsRPS (NE) Ltd has any authority to make or give any representation or warranty whatever in relation to this property.



**NORTHALLERTON**  
General: 01609 773004  
Land Agency: 01609 781234

northallerton@youngsrps.com

**SEDGEFIELD**  
General: 01740 617377  
Land Agency: 01740 622100

sedgefield@youngsrps.com

**NEWCASTLE**  
General: 0191 261 0300

newcastle@youngsrps.com

**HEXHAM**  
General: 01434 608980  
Land Agency: 01434 609000

hexham@youngsrps.com

**DUMFRIES**  
General: 01387 402277

dumfries@youngsrps.com

