

Julian Reid



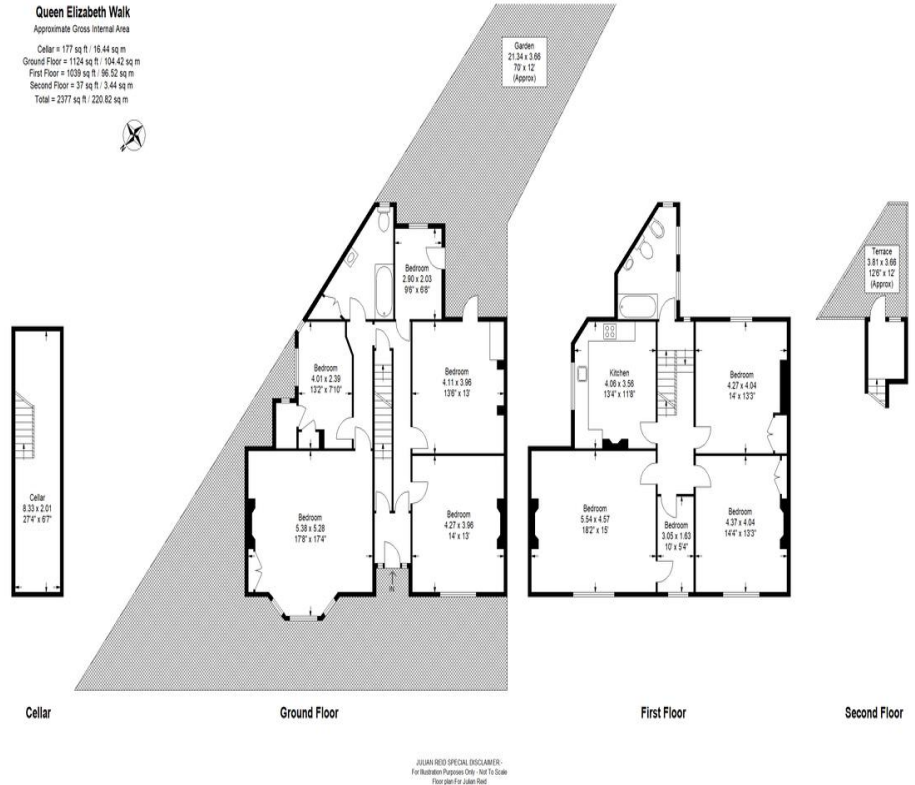
92 Queen Elizabeths Walk, London, N16 5UQ

Huge, double fronted Victorian property on this much admired location, currently arranged as two flats and in need of refurbishment. There is the potential to create a wonderful family home with large, south facing garden

Guide Price £2,100,000
Freehold

- **Excellent location**
- **Council Tax Band: D**
- **EPC Rating: D**
- **In need of complete refurbishment**
- **Currently arranged as two flats**

Large, double fronted, late Victorian house located on this popular residential road just north of Stoke Clissold Park and within walking distance of Stoke Newington Church Street. The house is currently arranged as two separate flats and requires complete refurbishment. Once completed it would provide a super and very spacious family house with 70' south facing garden



Julian Reid
 51 Stoke Newington Church Street London N16 0AR
 jreid@julianreid.co.uk Fax: 020 7923 8651
 +44 (0) 20 7923 8650

Important notice: Julian Reid, their clients and any joint agents give notice that: 1: They are not authorized to make or give representations or warranties in relation to the property either here or elsewhere, either on their own behalf or on behalf of the client or otherwise. They assume no responsibility for any statement that may be made in these particulars. These particulars do not form part of any offer or contract and must not be relied upon as statements or representations of fact. 2: Any areas, measurements or distances are approximate. The text, photographs and plans are for guidance only and are not necessarily comprehensive. It should not be assumed that the property has all necessary planning, building regulation or other consents and Julian Reid have not tested any services, equipment or facilities. Purchasers must satisfy themselves by inspection or otherwise.

