



H A R E F I E L D  
P L A C E



# H A R E F I E L D P L A C E

## HERITAGE & GRANDEUR

**Harefield Place is an exquisite ensemble of just 25 two and three bedroom luxury apartments, nestling amidst 8.5 acres of verdant greenbelt countryside, yet within easy reach of central London.**

Ideally located in Ickenham, off one of the most desirable private roads in Middlesex, this magnificent development offers nine spectacular homes in an original Georgian mansion house, with a further 16 superb apartments in an adjacent purpose-designed new building.

These exceptional apartments sit within extensive, beautifully landscaped grounds, enjoying the exclusive use of private leisure facilities and a secluded lake, with unparalleled views over South Buckinghamshire and beyond.



CLASSIC & MODERN

Once a gentleman's stately country residence, Harefield Place is a historic Grade II listed house that has been lovingly restored to its former glory. Behind the elegant Georgian façade, original features abound, from the imposing entrance hall to the high ceilings and tall sash windows that every apartment offers. Complementing this understated grandeur is an exquisite modern masterpiece, which offers more contemporary open-plan layouts along with private balconies and terraces. Whether modern or traditional, each apartment has been creatively conceived as a perfect backdrop to your lifestyle.



HAREFIELD  
PLACE

# TIMELESS & ELEGANT

Whether you're driven by the rare opportunity to own a part of British history, or would prefer to live amidst the ultimate in 21st century British architecture, Harefield Place has been carefully crafted to embrace your every need and desire. Relish the anticipation as you approach along the grand driveway; entertain in lavish style overlooking beautiful South Buckinghamshire countryside. Appreciate the elegance of truly effortless living, with an Estate Manager and the city at your feet.



HAREFIELD  
PLACE

## ALL OF LONDON ON YOUR DOORSTEP

Just as it was when Harefield Place was first conceived, London is arguably one of the most vibrant capitals in the world. Merging centuries of tradition with contemporary culture, the city offers an exciting mix of enterprise, passion and etiquette.

In London, history is ever-present, alongside cutting edge style. From Victorian pubs to Europe's most fashionable eateries, you're within easy reach of a vast array of cosmopolitan bars and restaurants. Home to any number of museums, art galleries and

theatres offering opera, ballet, music and comedy, as befits a city with a reputation as an international centre for culture, London is also renowned for its unparalleled shopping opportunities, from the easy glamour of Westfield to the elegant boutiques of the West End.



## EFFORTLESS & WITHIN EASY REACH

Despite its tranquil setting and old world charm, Harefield Place is surprisingly well connected: whether heading to the West End, the City, Europe or further afield, road, rail and air travel are all easily accessible.

With three of the ten most in-demand Tube stops all within less than 3 miles, travelling into central London is speedy and direct, taking just over 30 minutes. Ickenham station (6 minutes), Hillingdon station (8 minutes) and Ruislip station (9 minutes) are on the Metropolitan and Piccadilly lines, while West Ruislip station (8 minutes) is on the Central line. West Ruislip station also provides rail travel into London.

By car, the M40, M25 and M4 are each a short drive; the proximity of Stockley Park and Uxbridge Business Park (both within a 15 minute drive) enhance the prospect of a work-life balance.

Air travel is a pleasure, Heathrow is just a few miles away and private air travel is available from both Northolt and Denham airports. In addition, the Oxford Tube, a popular coach route between Oxford and central London, stops near Hillingdon station.

The immediate area boasts a number of renowned private schools, including Merchant Taylors' School for boys and Northwood College for girls. Harrow School, The American International School and Eton College are also within easy reach.



LONDON  
MARYLEBONE  
23 MINUTES

BY  
TRAIN\*



BY  
CAR

HEATHROW  
AIRPORT  
20 MINUTES

WESTFIELD  
SHOPPING CENTRE  
27 MINUTES

HOLLAND PARK  
29 MINUTES

KNIGHTSBRIDGE  
49 MINUTES

COVENT GARDEN  
48 MINUTES

KING'S CROSS  
46 MINUTES

SHEPHERD'S BUSH  
25 MINUTES

BY  
TUBE\*

\* Train times from West Ruislip station.  
\* Tube times from West Ruislip Underground station.  
Travel times from maps.google.com, thetrainline.com and tfl.gov.uk



HAREFIELD  
PLACE

## VERDANT SURROUNDINGS & VILLAGE LIFE

**With its charming country pubs and cosy cafés, leafy avenues and spectacular green setting – not forgetting its easy access to central London – the thriving community of Ickenham remains a closely guarded secret.**

Nestling within the vast Colne Valley Regional Park, with 200 miles of river and canal and over 60 lakes to explore, Ickenham's Denham Country Park and stretch of the Hillingdon Trail offer endless opportunities for walks, cycling and horse-riding. Historic manor houses abound, while many of the local sporting establishments are equally steeped in tradition: The Buckinghamshire and Moor Park golf clubs, Swakeleys Tennis Club, Holland & Holland Shooting School and the village's own cricket and rugby clubs are all within easy reach.

With a selection of shops and services in Ickenham to meet your everyday needs, the bustling town of Ruislip hosts a wider range of high street names, including Waitrose. Ruislip is also home to Winston Churchill Theatre and the Grade II listed Great Barn, with the Beck Theatre just 15 minutes away. Even closer to home, Ickenham's own vibrant cultural scene includes a popular local theatre and the week-long Ickenham Festival, held every other June.



3



4



5

- I. THE VILLAGE PUMP  
ICKENHAM

---

- 2. THE BUCKINGHAMSHIRE  
GOLF CLUB, DENHAM, UB9 5PG

---

- 3. STOKE PARK COUNTRY CLUB,  
HOTEL & SPA, STOKE POGES,  
SL2 4PG

- 4. S.J. WILLIAMS BUTCHERS  
ICKENHAM, UB10 8DF

---

- 5. COACH & HORSES PUB  
ICKENHAM, UB10 8LJ

---

- 6. MOOR PARK GOLF CLUB  
RICKMANSWORTH, WD3 1QN

II



6



EXQUISITE & REFINED



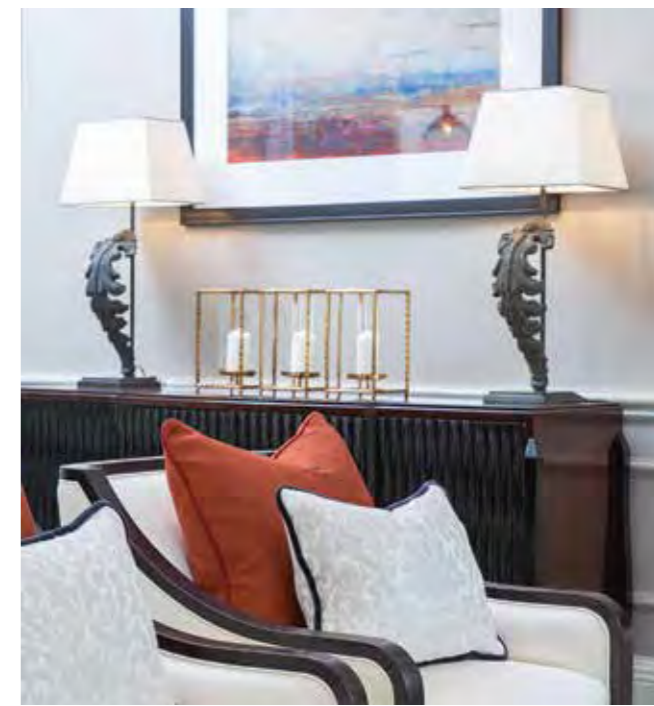
HAREFIELD  
PLACE

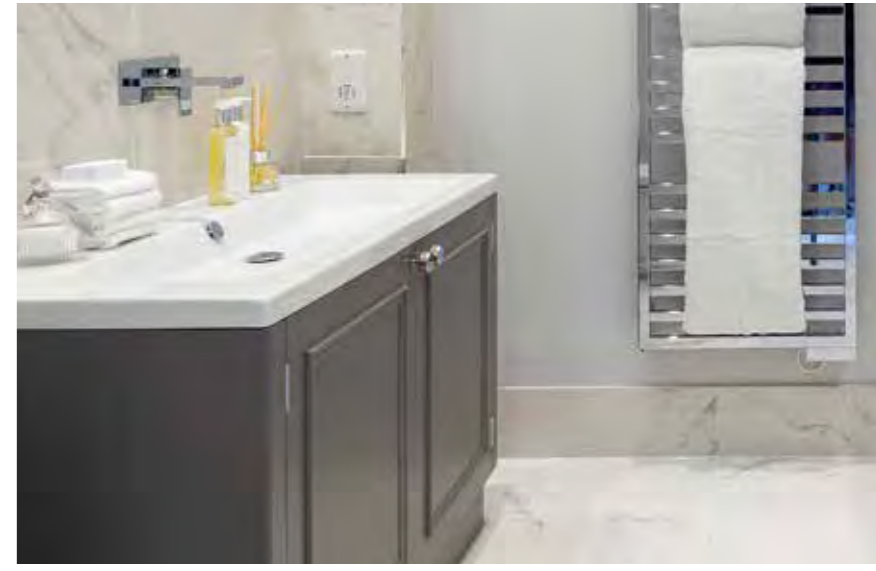


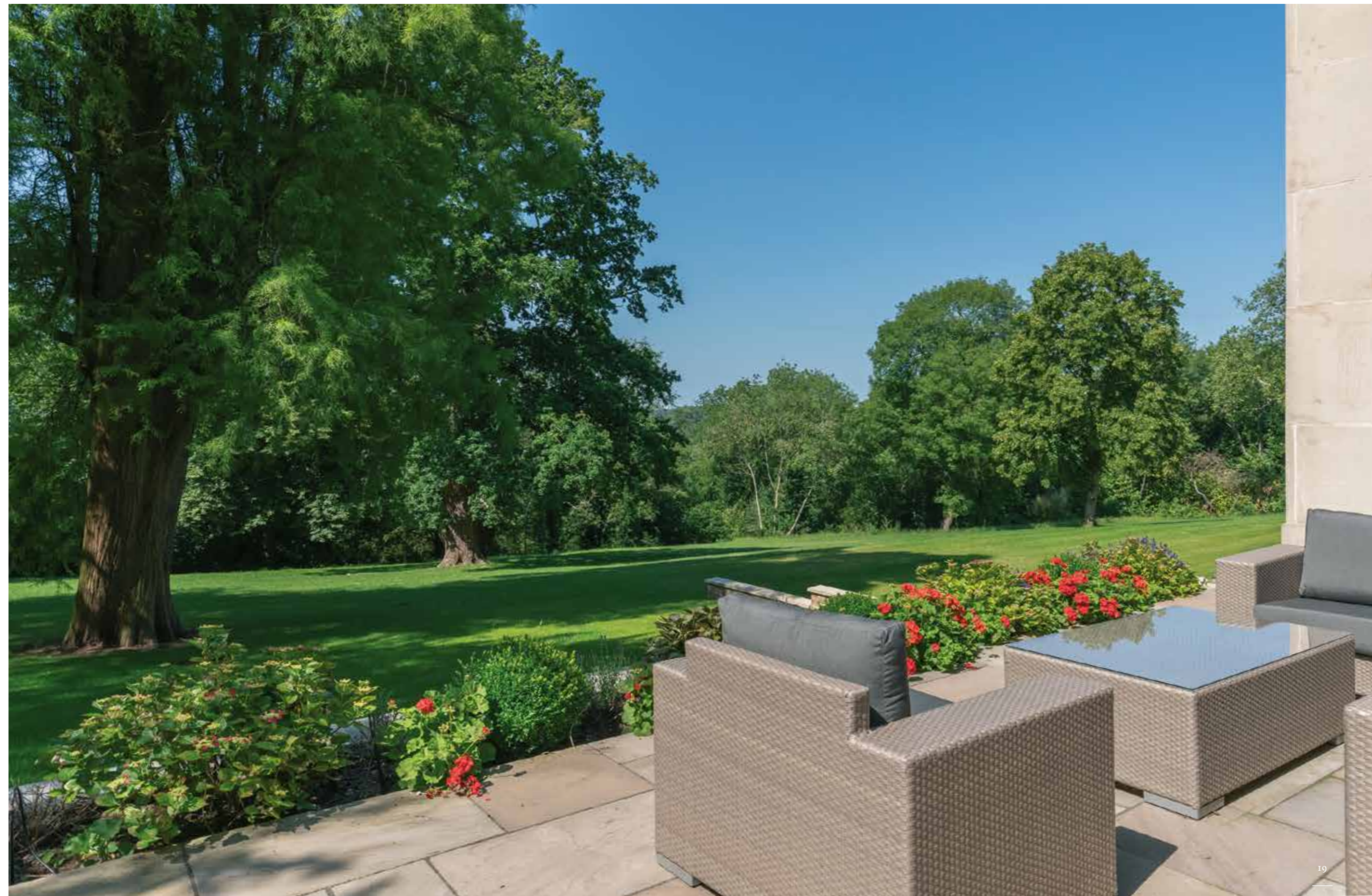
Envelop yourself in understated luxury, with interiors that convey an atmosphere of timeless elegance; each apartment is designed as the ultimate indulgence.

Individually planned, with thoughtful layouts and sophisticated décor, many of the apartments offer access to private outdoor balconies or terraces. Perfectly proportioned spaces are scaled to accommodate even the largest heirlooms, ensuring that you can celebrate Christmas and birthdays around the same table your family always have.

Whether for entertaining family and friends or as a tranquil retreat from a busy world, living spaces, bedrooms and bathrooms alike demonstrate the hallmarks of quality materials and exceptional attention to detail. Living at Harefield Place sets new standards in luxury.









# BEAUTIFUL & TRANQUIL



HAREFIELD  
PLACE

Escape the hustle and bustle of city life to spend time around your own personal Eden, where 8.5 acres of landscaped grounds are there for residents to enjoy.

Games of croquet on the front lawn; fun-filled picnics in the orchard; long woodland walks at dusk with the dog or star-lit evening strolls around the lake: within the vast expanses of open natural landscape, there are innumerable

opportunities to embrace the great outdoors. Totally private, with gated access and a long sweeping drive down to the house, Harefield Place's exquisite gardens are enhanced by the panoramic views of surrounding countryside.

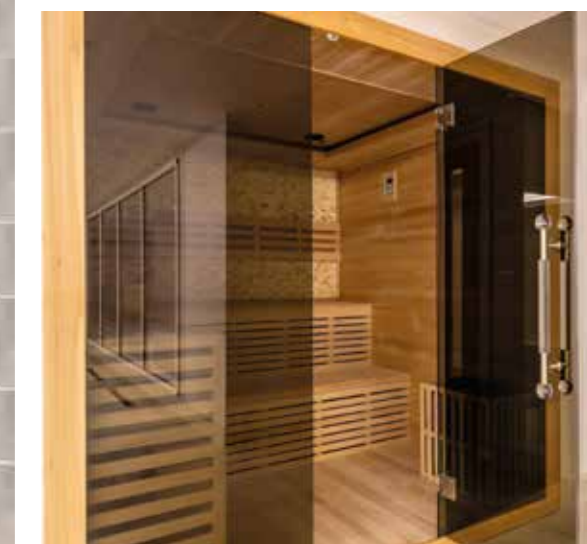
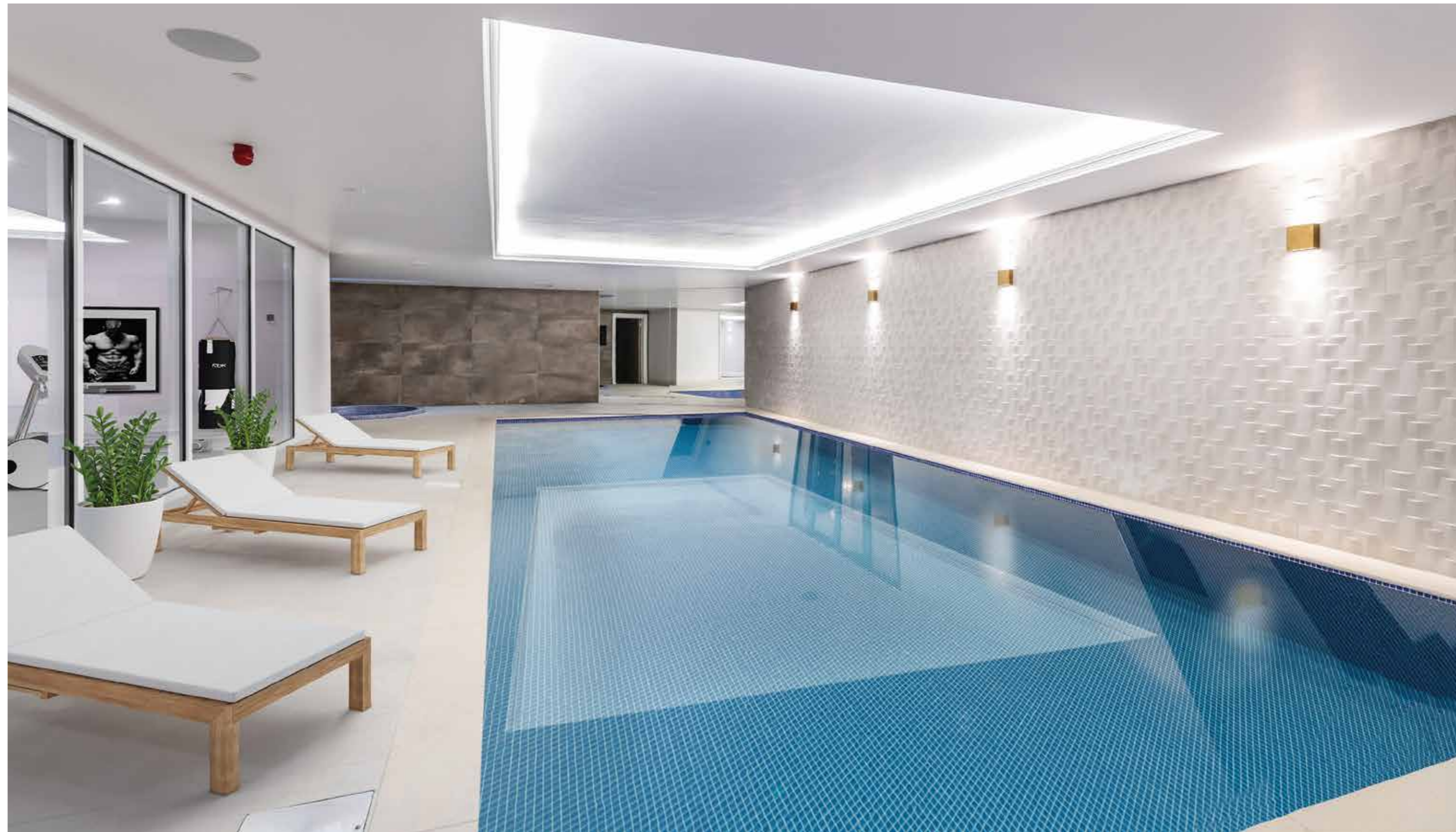


# REVITALISE & INVIGORATE

At Harefield Place, you can take the time to truly look after yourself, with exclusive access to luxury wellness facilities including an indoor pool, fully-equipped gym, sauna and hot tub – plus tennis court within the grounds.

Polish up your serve and give your competitive spirit free reign with a fast-moving volley on the tennis court – you can cool down again after the match in the beautiful grounds. Get the blood pumping in the on-site state-of-the-art

gym, where you can work out using the latest cardio equipment overlooking the spectacular indoor pool. Bathed in a subtle ambient lighting and heated for all year enjoyment, it provides a perfect place to exercise or unwind.





EXCLUSIVE & LUXURIOUS



## HAREFIELD PLACE



**The superb amenities on this private estate reflect the prestige of the magnificent manor house, from dedicated underground parking to the Estate Management service.**

Behind the imposing gates at Harefield Place is an idyllic setting for relaxing. Estate management ensures that the exquisitely landscaped gardens are meticulously cared for, while secure underground car parking is provided for each apartment.

Based on site, the Estate Manager will ensure that all the leisure facilities, communal areas and grounds are fully maintained and are always looking pristine. In addition, they will be on hand to assist with day to day tasks such as taking in parcels



EXPLORE & DISCOVER



- 1. MAIN GATE & GATE HOUSE
- 2. UNDERGROUND CAR PARK ENTRANCE
- 3. LEISURE COMPLEX (GARDEN FLOOR)
- 4. FRONT LAWN
- 5. REAR GARDEN
- 6. LAKE
- 7. TENNIS COURT
- 8. ORCHARD

The background of the page is a light-colored, classical architectural frieze. It features a central section with a dark teal overlay containing text. The frieze itself has a repeating pattern of stylized acanthus leaves and scrolls. The text is centered within the teal area.

# CLASSIC COLLECTION

Steeped in the history and grandeur  
of the original Georgian mansion,  
the apartments in our Classic Collection  
retain many period features while providing  
generous living space.

# CLASSIC COLLECTION

## 1 HAREFIELD PLACE HOUSE 2 BEDROOM GARDEN FLOOR

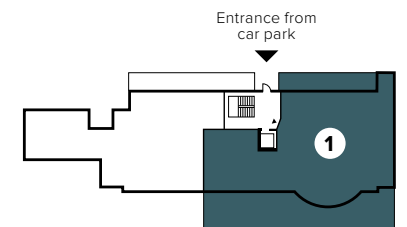
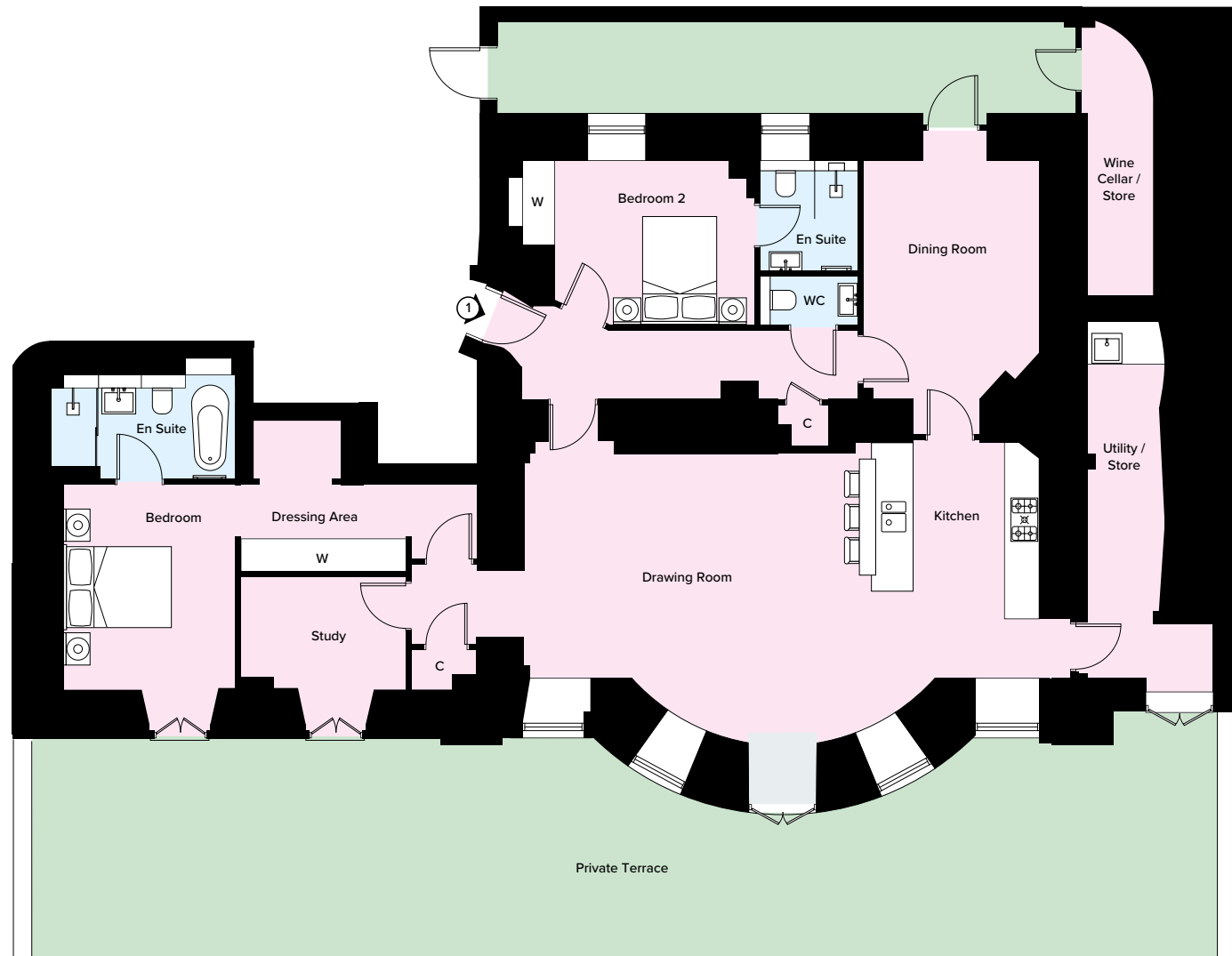
### ROOM DIMENSIONS

Drawing Room/Kitchen	5.40m x 9.50m	17' 7" x 31' 2"
Dining Room	5.10m x 3.20m	16' 7" x 10' 5"
Master Bedroom	3.80m x 3.40m	12' 5" x 11' 2"
Bedroom 2	3.00m x 4.30m	9' 8" x 14' 1"
Study	2.10m x 3.00m	6' 9" x 9' 8"
<b>Total Area</b>	<b>150 sq m</b>	<b>1,621 sq ft</b>
<b>Outside Area</b>	<b>123 sq m</b>	<b>1329 sq ft</b>

### KEY

C Cupboard      W Wardrobe

Two bedroom garden floor apartment with two reception rooms and a large, south facing terrace which spans the length of the property. Direct access to the Wine Cellar / Store Room



GARDEN FLOOR

Floor plans shown are not to scale and ratio may differ to other plans in this document. Apartment layouts are for guidance only. All dimensions are subject to change.

## 2 HAREFIELD PLACE HOUSE

### 2 BEDROOM

### GARDEN FLOOR

Two bedroom garden floor apartment with views across the impressive grounds from the garden terrace. There is a further terrace to the front accessed via the kitchen.

## CLASSIC COLLECTION

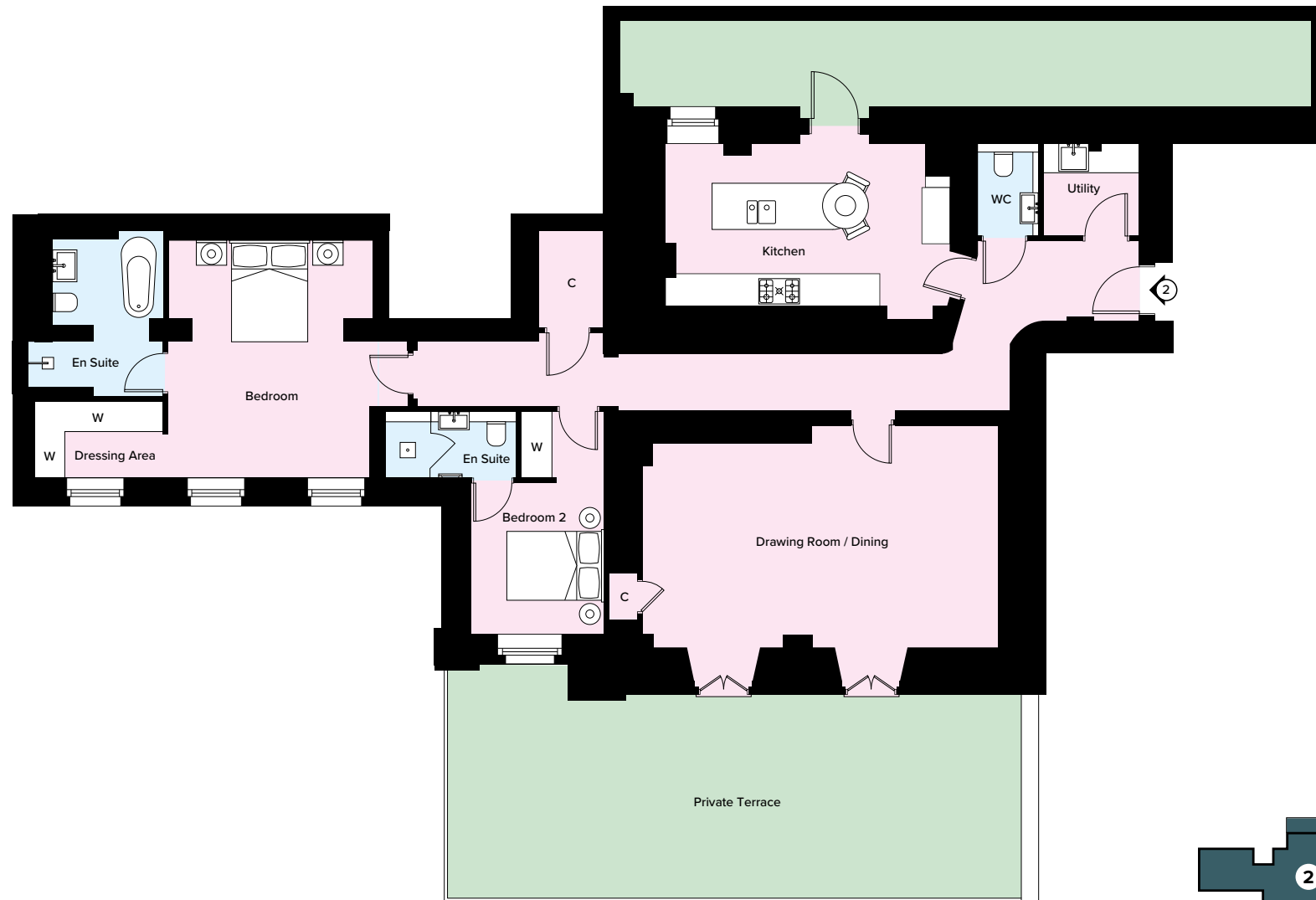
### ROOM DIMENSIONS

Drawing / Dining Room	4.40m x 7.20m	14' 4" x 23' 6"
Kitchen	3.50m x 5.60m	11' 5" x 18' 4"
Master Bedroom	4.90m x 4.00m	16' 1" x 13' 1"
Bedroom 2	4.40m x 2.60m	14' 4" x 8' 5"
<b>Total Area</b>	<b>131 sq m</b>	<b>1,409 sq ft</b>
<b>Outside Area</b>	<b>74 sq m</b>	<b>800 sq ft</b>

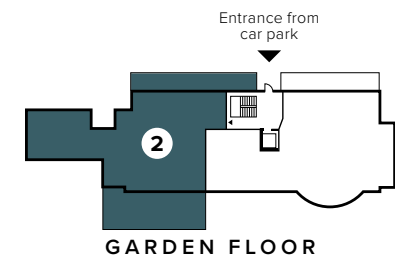
### KEY

C Cupboard

W Wardrobe



Floor plans shown are not to scale and ratio may differ to other plans in this document. Apartment layouts are for guidance only. All dimensions are subject to change.



# CLASSIC COLLECTION

## 3 HAREFIELD PLACE HOUSE 2 BEDROOM GROUND FLOOR

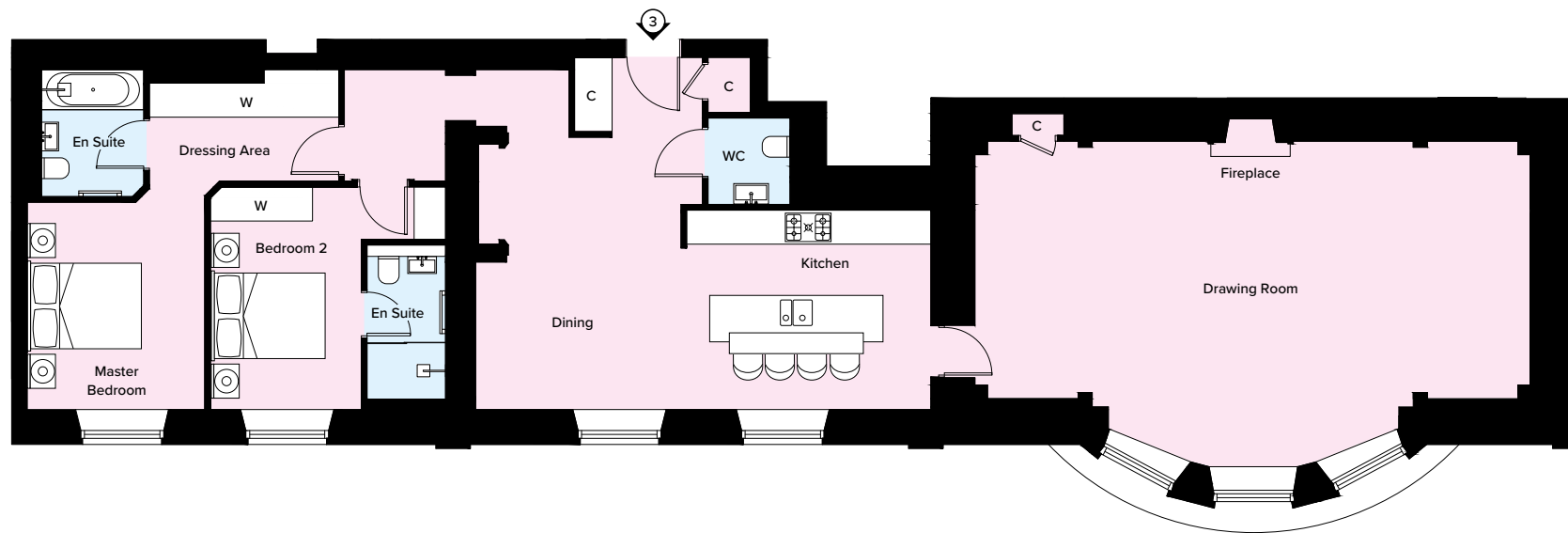
### ROOM DIMENSIONS

Kitchen/Dining	5.90m x 8.00m	19' 4" x 26' 2"
Drawing Room	5.70m x 9.70m	18' 7" x 31' 8"
Master Bedroom	3.60m x 3.10m	11' 8" x 10' 2"
Bedroom 2	3.90m x 2.60m	12' 8" x 8' 5"
<b>Total Area</b>	<b>145 sq m</b>	<b>1,564 sq ft</b>

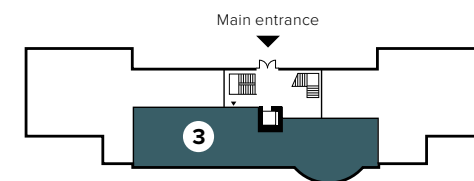
### KEY

C Cupboard      W Wardrobe

Two bedroom ground floor apartment with a separate kitchen/dining area and a feature bay window with views of the grounds from the drawing room.



Floor plans shown are not to scale and ratio may differ to other plans in this document. Apartment layouts are for guidance only. All dimensions are subject to change.



GROUND FLOOR

# 4 HAREFIELD PLACE HOUSE

## 2 BEDROOM

### GROUND FLOOR

Two bedroom ground floor apartment with study and a dual aspect from the dining area and drawing room.

# CLASSIC COLLECTION

### ROOM DIMENSIONS

Drawing Room/Dining/Kitchen	9.10m x 6.30m	29' 9" x 20' 7"
Master Bedroom	6.00m x 4.10m	19' 7" x 13' 5"
Bedroom 2	4.00m x 3.70m	13' 1" x 12' 1"
Study	2.20m x 5.80m	7' 2" x 19' 0"
<b>Total Area</b>	<b>151 sq m</b>	<b>1,630 sq ft</b>

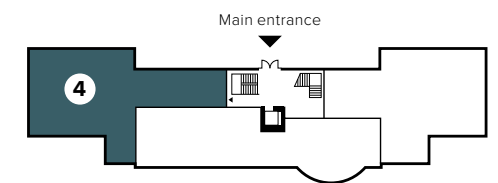
### KEY

C Cupboard

W Wardrobe



Floor plans shown are not to scale and ratio may differ to other plans in this document. Apartment layouts are for guidance only. All dimensions are subject to change.



GROUND FLOOR

# 5 HAREFIELD PLACE HOUSE

## 3 BEDROOM

### GROUND FLOOR

Three bedroom, three bathroom ground floor apartment, with a large south facing terrace.

# CLASSIC COLLECTION

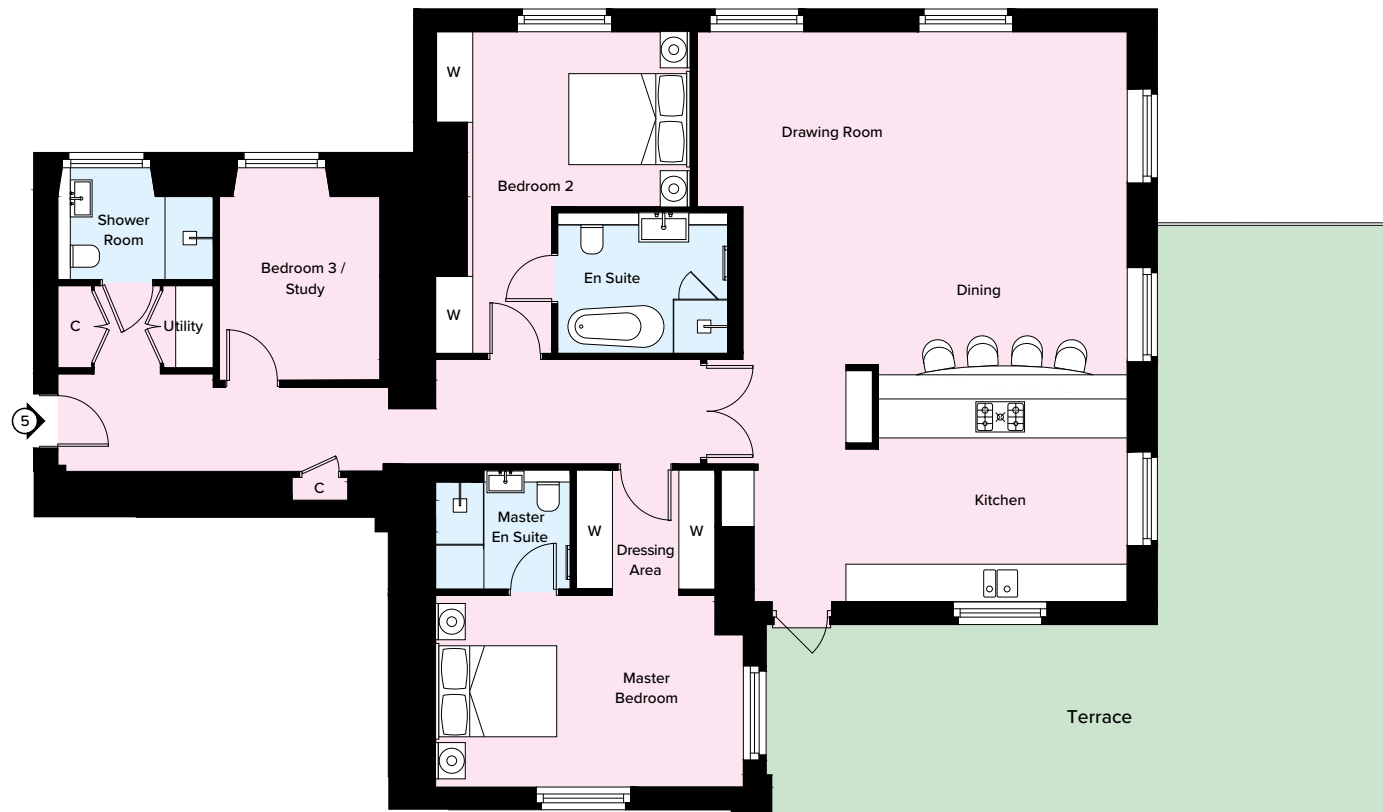
### ROOM DIMENSIONS

Drawing Room/Dining/Kitchen	9.40m x 7.10m	30' 8" x 23' 3"
Master Bedroom	3.10m x 5.00m	10' 2" x 16' 4"
Bedroom 2	2.80m x 4.20m	9' 2" x 13' 8"
Bedroom 3/Study	3.50m x 2.60m	11' 5" x 8' 5"
<b>Total Area</b>	<b>150 sq m</b>	<b>1,615 sq ft</b>
<b>Outside Area</b>	<b>58 sq m</b>	<b>624 sq ft</b>

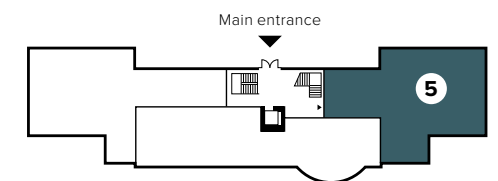
### KEY

C Cupboard

W Wardrobe



Floor plans shown are not to scale and ratio may differ to other plans in this document. Apartment layouts are for guidance only. All dimensions are subject to change.



GROUND FLOOR

# 6 HAREFIELD PLACE HOUSE

## 2 BEDROOM

### FIRST FLOOR

Two bedroom first floor apartment with a southerly aspect to all rooms and views across the grounds, in addition to a separate kitchen/dining area.

# CLASSIC COLLECTION

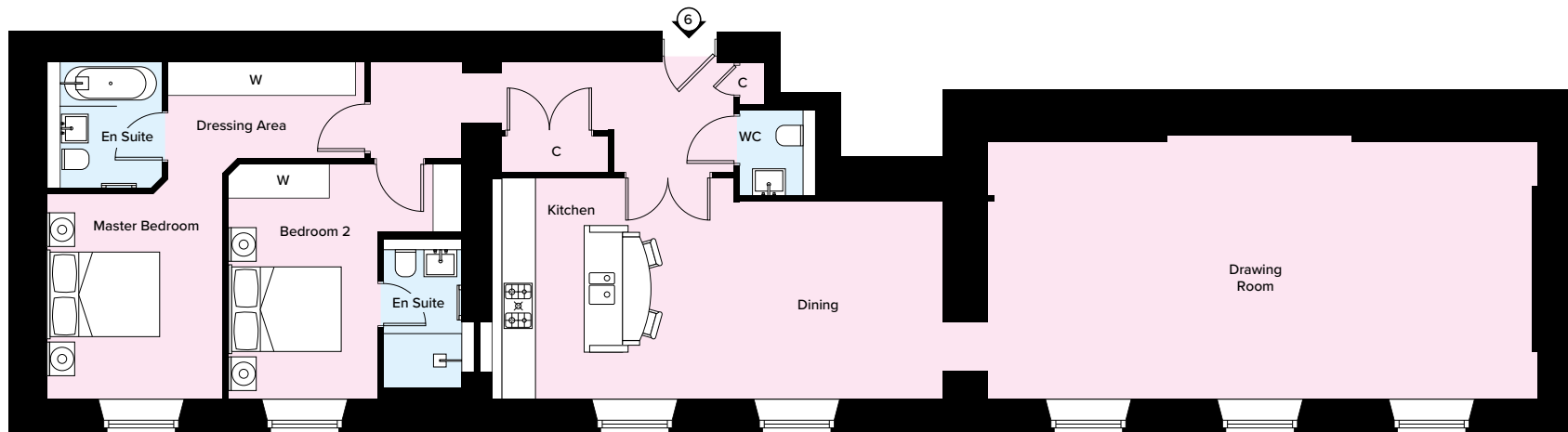
### ROOM DIMENSIONS

Kitchen/Dining	3.90m x 8.00m	12' 8" x 26' 2"
Drawing Room	4.50m x 9.70m	14' 8" x 31' 8"
Master Bedroom	3.60m x 3.10m	11' 8" x 10' 2"
Bedroom 2	4.10m x 4.10m	13' 5" x 13' 5"
<b>Total Area</b>	<b>138 sq m</b>	<b>1,489 sq ft</b>

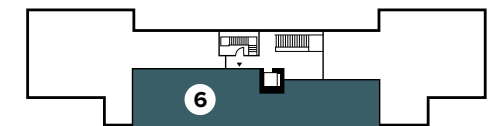
### KEY

C Cupboard

W Wardrobe



Floor plans shown are not to scale and ratio may differ to other plans in this document. Apartment layouts are for guidance only. All dimensions are subject to change.



FIRST FLOOR



# CLASSIC COLLECTION

## 7 HAREFIELD PLACE HOUSE 3 BEDROOM FIRST FLOOR

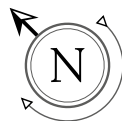
### ROOM DIMENSIONS

Drawing Room/Dining/Kitchen	9.30m x 6.30m	30' 5" x 20' 7"
Master Bedroom	6.00m x 2.70m	19' 7" x 8' 9"
Bedroom 2	4.80m x 3.70m	15' 7" x 12' 1"
Bedroom 3	2.60m x 4.40m	8' 5" x 14' 4"
<b>Total Area</b>	<b>148 sq m</b>	<b>1,600 sq ft</b>
<b>Loft Space</b>	<b>37 sq m</b>	<b>400 sq ft</b>

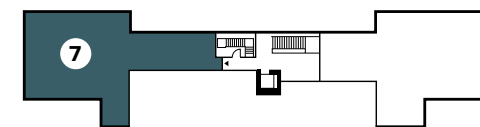
### KEY

C Cupboard      W Wardrobe

Three bedroom first floor apartment with a spacious drawing room and kitchen/dining area. Dual aspect living area with views across the grounds.



Floor plans shown are not to scale and ratio may differ to other plans in this document. Apartment layouts are for guidance only. All dimensions are subject to change.



# CLASSIC COLLECTION

## 8 HAREFIELD PLACE HOUSE 3 BEDROOM FIRST FLOOR

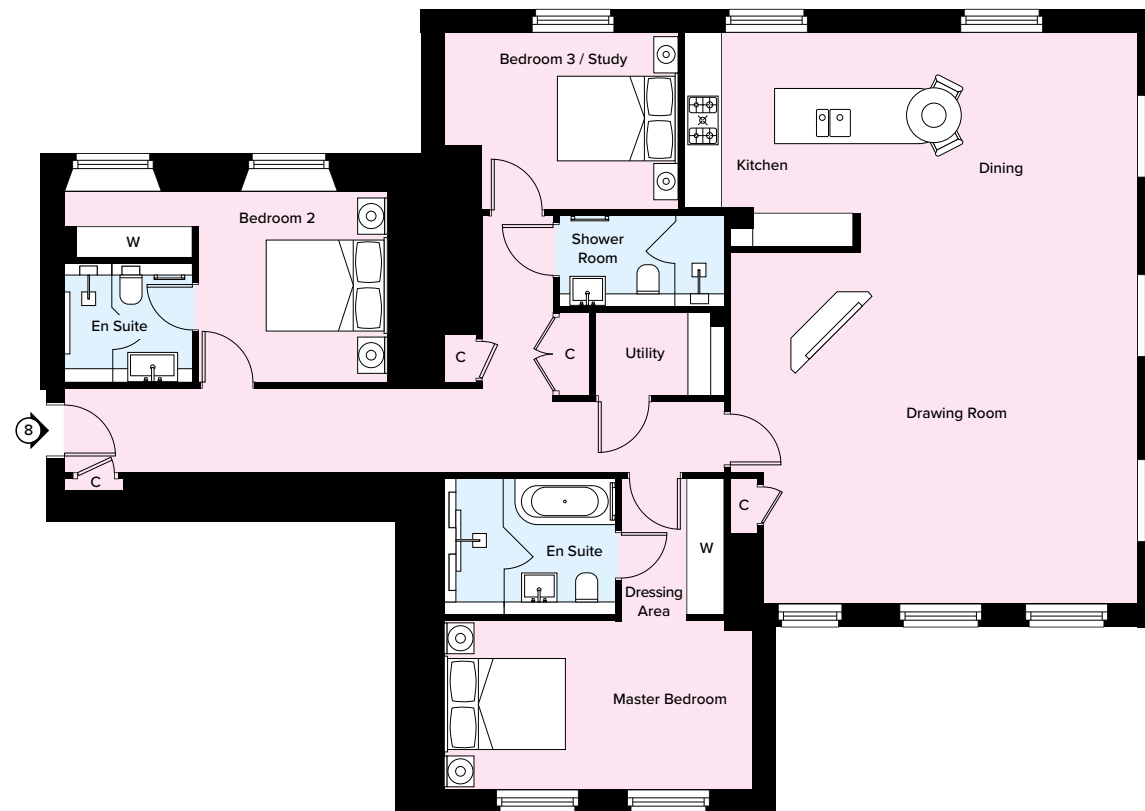
### ROOM DIMENSIONS

Drawing Room/Dining/Kitchen	9.40m x 7.40m	30' 8" x 24' 3"
Master Bedroom	2.70m x 5.00m	8' 9" x 16' 4"
Bedroom 2	3.10m x 3.10m	10' 2" x 10' 2"
Bedroom 3/Study	2.90m x 3.80m	9' 5" x 12' 5"
<b>Total Area</b>	<b>150 sq m</b>	<b>1,614 sq ft</b>

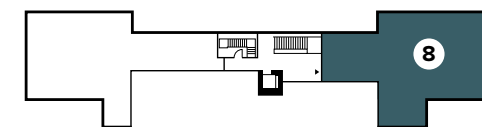
### KEY

C Cupboard      W Wardrobe

Three bedroom first floor apartment with triple aspect windows to the drawing room and kitchen/dining area.



Floor plans shown are not to scale and ratio may differ to other plans in this document. Apartment layouts are for guidance only. All dimensions are subject to change.



FIRST FLOOR

# 9 HAREFIELD PLACE HOUSE

## 3 BEDROOM PENTHOUSE

### SECOND FLOOR

# CLASSIC COLLECTION

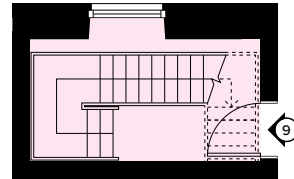
A three bedroom penthouse apartment all with en suites, enjoying two private roof terraces offering far reaching views and direct lift access.

#### ROOM DIMENSIONS

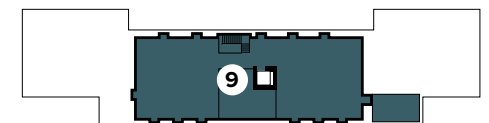
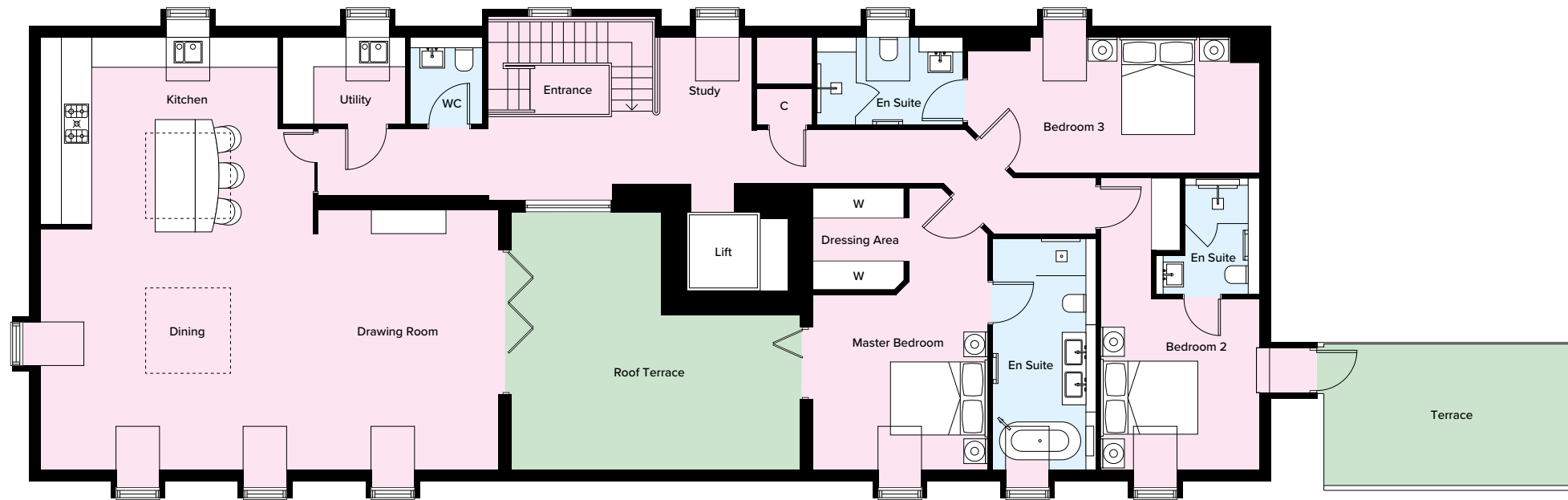
Kitchen/Dining	8.90m x 5.60m	29' 2" x 18' 4"
Drawing Room	5.30m x 3.80m	17' 4" x 12' 5"
Master Bedroom	5.80m x 3.60m	19' 0" x 11' 8"
Master En Suite	4.70m x 2.10m	15' 4" x 6' 9"
Bedroom 2	3.50m x 3.20m	11' 5" x 10' 5"
Bedroom 3	2.80m x 6.00m	9' 2" x 19' 7"
<b>Total Area</b>	<b>180 sq m</b>	<b>1,940 sq ft</b>
<b>Outside Area</b>	<b>40 sq m</b>	<b>435 sq ft</b>

#### KEY

C Cupboard      W Wardrobe      ---- Skylight



First floor entrance



SECOND FLOOR

Floor plans shown are not to scale and ratio may differ to other plans in this document. Apartment layouts are for guidance only. All dimensions are subject to change.







# CONTEMPORARY COLLECTION

Built to complement the Georgian mansion with high ceilings and large windows, the Contemporary Collection of apartments offer a more modern open-plan living space.

# CONTEMPORARY COLLECTION

## 1 BROMPTON HOUSE 2 BEDROOM GARDEN FLOOR

Two bedroom garden floor apartment situated within close proximity to the leisure complex with bi-fold doors that open onto a south facing terrace.

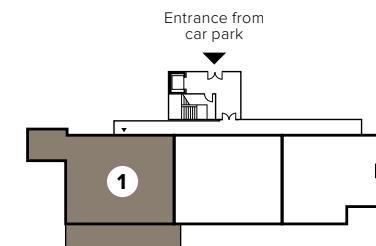
### ROOM DIMENSIONS

Drawing Room/Dining	10.12m x 4.65m	33' 2" x 15' 3"
Kitchen	4.66m x 3.29m	15' 4" x 10' 10"
Master Bedroom	3.94m x 3.66m	12' 11" x 12' 0"
Bedroom 2	3.64m x 2.85m	11' 11" x 9' 4"
<b>Total Area</b>	<b>141 sq m</b>	<b>1,519 sq ft</b>
<b>Outside Area</b>	<b>40 sq m</b>	<b>436 sq ft</b>

### KEY

C Cupboard

W Wardrobe



GARDEN FLOOR



Floor plans shown are not to scale and ratio may differ to other plans in this document. Apartment layouts are for guidance only. All dimensions are subject to change.

# CONTEMPORARY COLLECTION

## 2 BROMPTON HOUSE 2 BEDROOM GARDEN FLOOR

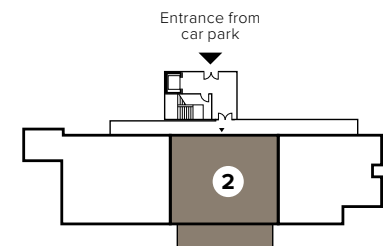
### ROOM DIMENSIONS

Drawing Room/Dining/Kitchen	10.12m x 4.71m	33' 2" x 15' 5"
Master Bedroom	3.94m x 3.64m	12' 11" x 11' 11"
Bedroom 2	3.64m x 2.84m	11' 11" x 9' 4"
<b>Total Area</b>	<b>126 sq m</b>	<b>1,356 sq ft</b>
<b>Outside Area</b>	<b>47 sq m</b>	<b>507 sq ft</b>

### KEY

C Cupboard      W Wardrobe

Two bedroom garden floor apartment, with easy access to the leisure complex and a south facing private terrace, overlooking the grounds.



GARDEN FLOOR



Floor plans shown are not to scale and ratio may differ to other plans in this document. Apartment layouts are for guidance only. All dimensions are subject to change.



# CONTEMPORARY COLLECTION

## 3 BROMPTON HOUSE 2 BEDROOM GARDEN FLOOR

Two bedroom garden floor apartment, located close to the leisure complex, with bi-fold doors opening onto a spacious, south facing terrace.

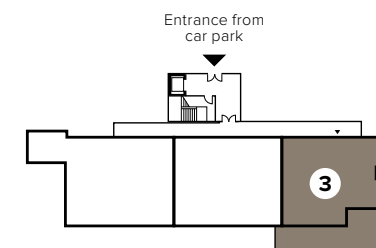
### ROOM DIMENSIONS

Drawing Room/Dining/Kitchen	10.12m x 4.71m	33' 2" x 15' 5"
Master Bedroom	5.62m x 2.75m	18' 5" x 9' 0"
Bedroom 2	4.63m x 2.91m	15' 2" x 9' 7"
<b>Total Area</b>	<b>111 sq m</b>	<b>1,204 sq ft</b>
<b>Outside Area</b>	<b>44 sq m</b>	<b>475 sq ft</b>

### KEY

C Cupboard

W Wardrobe



GARDEN FLOOR



Floor plans shown are not to scale and ratio may differ to other plans in this document. Apartment layouts are for guidance only. All dimensions are subject to change.

# CONTEMPORARY COLLECTION

## ROOM DIMENSIONS

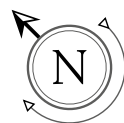
Drawing Room/Dining/Kitchen	9.42m x 5.99m	30' 11" x 19' 8"
Master Bedroom	4.28m x 3.42m	14' 0" x 11' 3"
Bedroom 2	4.76m x 3.33m	15' 7" x 10' 11"
<b>Total Area</b>	<b>143 sq m</b>	<b>1,543 sq ft</b>
<b>Outside Area</b>	<b>30 sq m</b>	<b>326 sq ft</b>

## KEY

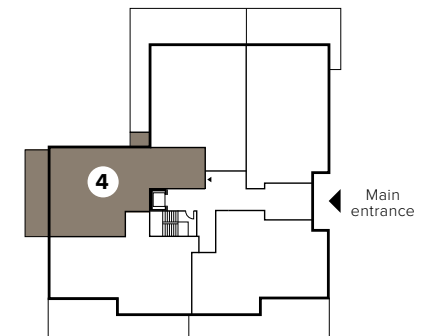
C Cupboard      W Wardrobe

## 4 BROMPTON HOUSE 2 BEDROOM GROUND FLOOR

Two bedroom ground floor apartment, with a large open plan drawing room and kitchen/dining area and private terrace.



Floor plans shown are not to scale and ratio may differ to other plans in this document. Apartment layouts are for guidance only. All dimensions are subject to change.



GROUND FLOOR

# 5 BROMPTON HOUSE

## 2 BEDROOM

### GROUND FLOOR

Two bedroom ground floor apartment, with a large entrance hall and a wrap-around terrace.

# CONTEMPORARY COLLECTION

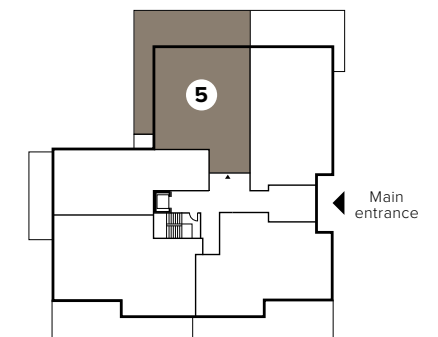
### ROOM DIMENSIONS

Drawing Room/Dining/Kitchen	8.63m x 7.08m	28' 4" x 23' 3"
Master Bedroom	3.90m x 3.88m	12' 10" x 12' 9"
Bedroom 2	4.46m x 2.92m	14' 8" x 9' 7"
<b>Total Area</b>	<b>143 sq m</b>	<b>1,543 sq ft</b>
<b>Outside Area</b>	<b>77 sq m</b>	<b>838 sq ft</b>

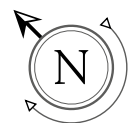
### KEY

C Cupboard

W Wardrobe



**GROUND FLOOR**



Floor plans shown are not to scale and ratio may differ to other plans in this document. Apartment layouts are for guidance only. All dimensions are subject to change.

# CONTEMPORARY COLLECTION

## ROOM DIMENSIONS

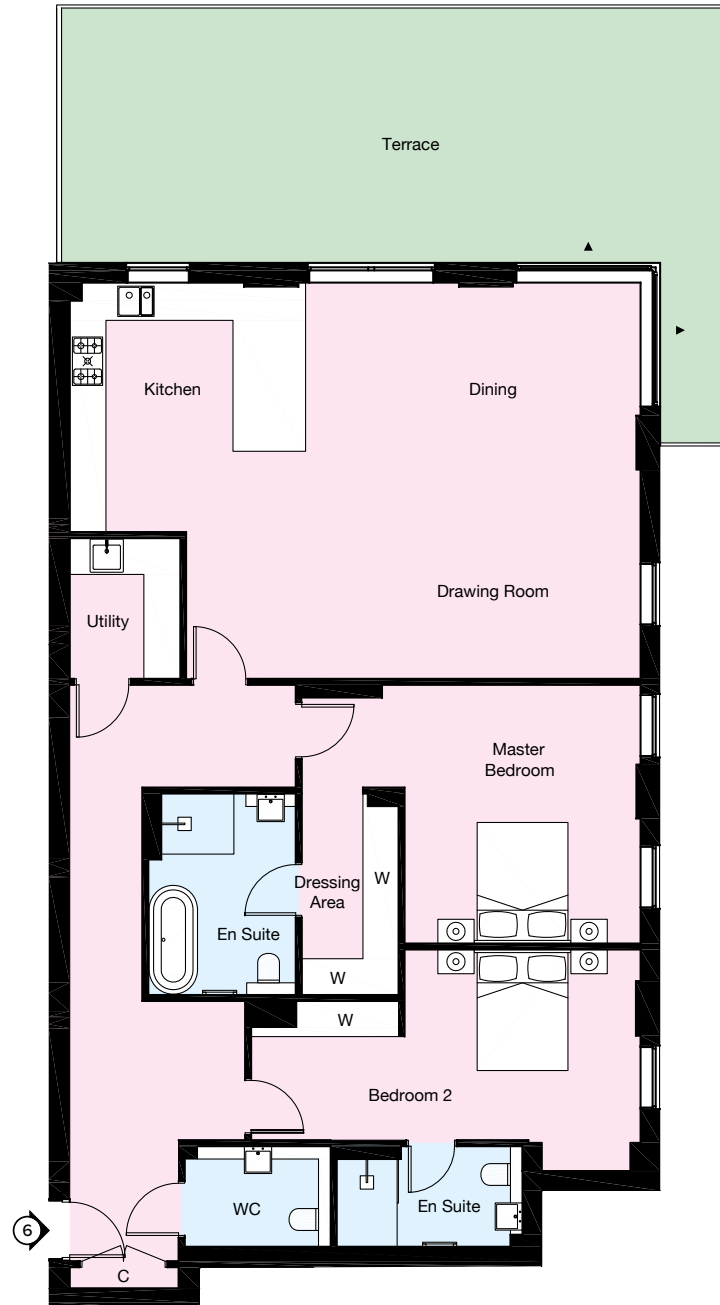
Drawing Room/Dining/Kitchen	9.43m x 6.55m	30' 11" x 21' 6"
Master Bedroom	4.28m x 3.9m	14' 0" x 12' 10"
Bedroom 2	3.90m x 3.66m	12' 10" x 12' 0"
<b>Total Area</b>	<b>150 sq m</b>	<b>1,620 sq ft</b>
<b>Outside Area</b>	<b>48 sq m</b>	<b>516 sq ft</b>

## KEY

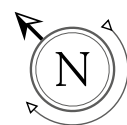
C Cupboard                      W Wardrobe

## 6 BROMPTON HOUSE 2 BEDROOM GROUND FLOOR

Two bedroom ground floor apartment with a spacious open plan drawing room and kitchen/dining area leading onto a large easterly private terrace.



**GROUND FLOOR**



Floor plans shown are not to scale and ratio may differ to other plans in this document. Apartment layouts are for guidance only. All dimensions are subject to change.

# CONTEMPORARY COLLECTION

## 7 BROMPTON HOUSE 2 BEDROOM GROUND FLOOR

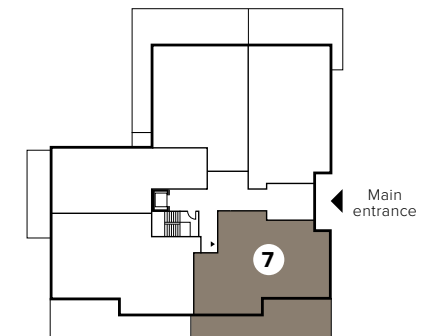
### ROOM DIMENSIONS

Drawing Room/Dining/Kitchen	9.03m x 8.00m	29' 8" x 26' 3"
Master Bedroom	4.48m x 3.27m	14' 8" x 10' 9"
Bedroom 2	3.76m x 3.21m	12' 4" x 10' 6"
<b>Total Area</b>	<b>151 sq m</b>	<b>1,631 sq ft</b>
<b>Outside Area</b>	<b>56 sq m</b>	<b>606 sq ft</b>

### KEY

C Cupboard      W Wardrobe

Two bedroom ground floor apartment with an impressive living space and bi-fold doors opening onto an expansive south facing terrace, with views of the grounds.



**GROUND FLOOR**



Floor plans shown are not to scale and ratio may differ to other plans in this document. Apartment layouts are for guidance only. All dimensions are subject to change.

# CONTEMPORARY COLLECTION

## 8 BROMPTON HOUSE 2 BEDROOM GROUND FLOOR

Two bedroom ground floor apartment, with a large sociable living space that opens onto a south facing terrace.

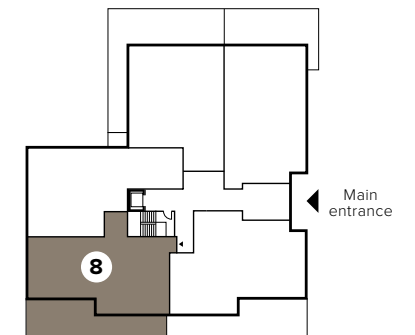
### ROOM DIMENSIONS

Drawing Room/Dining/Kitchen	8.60m x 6.90m	22' 8" x 28' 2"
Master Bedroom	5.12m x 2.96m	16' 10" x 9' 8"
Bedroom 2	3.29m x 3.16m	10' 10" x 10' 4"
<b>Total Area</b>	<b>140 sq m</b>	<b>1,516 sq ft</b>
<b>Outside Area</b>	<b>57 sq m</b>	<b>618 sq ft</b>

### KEY

C Cupboard

W Wardrobe



**GROUND FLOOR**



Floor plans shown are not to scale and ratio may differ to other plans in this document. Apartment layouts are for guidance only. All dimensions are subject to change.

# CONTEMPORARY COLLECTION

## 9 BROMPTON HOUSE

2 BEDROOM  
FIRST FLOOR

Two bedroom first floor apartment with a spacious open plan drawing room and kitchen/dining area, which has direct access onto a private balcony.

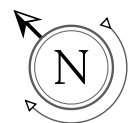
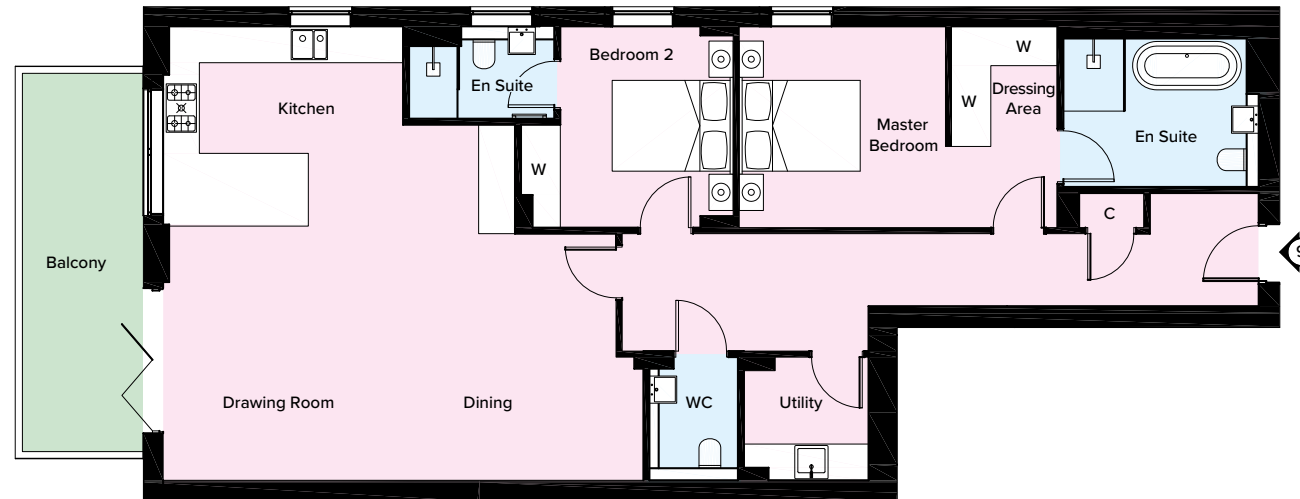
### ROOM DIMENSIONS

Drawing Room/Dining/Kitchen	7.50m x 7.49m	24' 7" x 24' 7"
Master Bedroom	3.41m x 3.33m	11' 2" x 10' 11"
Bedroom 2	3.33m x 2.86m	10' 11" x 9' 4"
<b>Total Area</b>	<b>118 sq m</b>	<b>1,277 sq ft</b>
<b>Outside Area</b>	<b>12 sq m</b>	<b>135 sq ft</b>

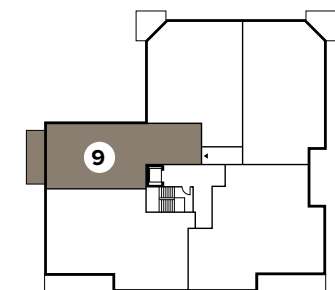
### KEY

C Cupboard

W Wardrobe



Floor plans shown are not to scale and ratio may differ to other plans in this document. Apartment layouts are for guidance only. All dimensions are subject to change.



FIRST FLOOR

# CONTEMPORARY COLLECTION

## ROOM DIMENSIONS

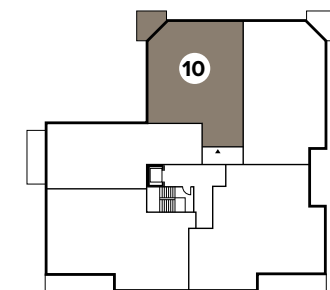
Drawing Room/Dining/Kitchen	8.63m x 7.08m	28' 4" x 23' 3"
Master Bedroom	3.90m x 3.88m	12' 10" x 12' 9"
Bedroom 2	4.19m x 2.92m	13' 9" x 9' 7"
<b>Total Area</b>	<b>137 sq m</b>	<b>1,483 sq ft</b>
<b>Outside Area</b>	<b>8 sq m</b>	<b>94 sq ft</b>

## KEY

C Cupboard      W Wardrobe

## 10 BROMPTON HOUSE 2 BEDROOM FIRST FLOOR

Two bedroom first floor apartment with open plan entertaining space and bi-fold doors onto its own private balcony.



FIRST FLOOR



Floor plans shown are not to scale and ratio may differ to other plans in this document. Apartment layouts are for guidance only. All dimensions are subject to change.



# CONTEMPORARY COLLECTION

## 11 BROMPTON HOUSE

### 3 BEDROOM FIRST FLOOR

Three bedroom first floor apartment with a large open plan drawing room and kitchen/dining area leading onto a private east facing balcony, accessed via bi-fold doors.

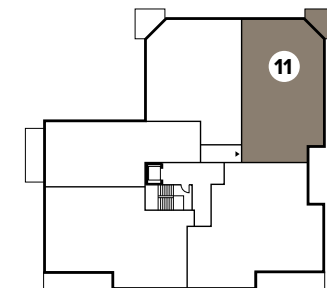
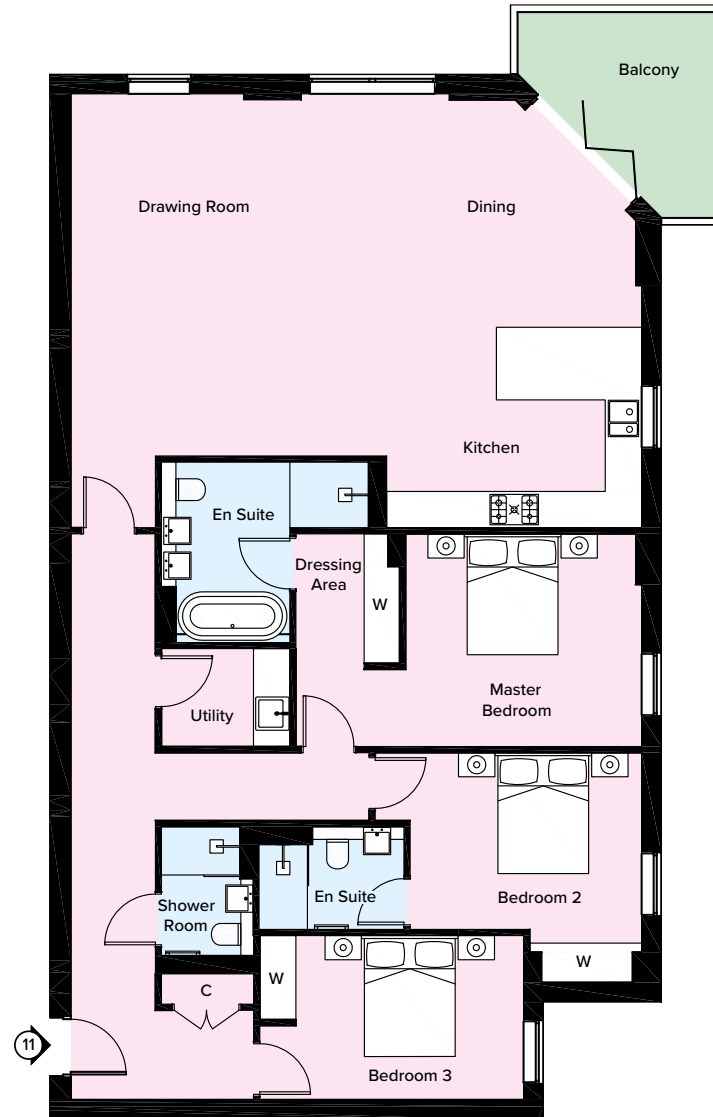
#### ROOM DIMENSIONS

Drawing Room/Dining/Kitchen	9.43m x 7.17m	30' 11" x 23' 6"
Master Bedroom	3.90m x 3.52m	12' 10" x 11' 6"
Bedroom 2	3.83m x 2.92m	12' 7" x 9' 7"
Bedroom 3	4.36m x 2.71m	14' 4" x 8' 11"
<b>Total Area</b>	<b>148 sq m</b>	<b>1,601 sq ft</b>
<b>Outside Area</b>	<b>8 sq m</b>	<b>94 sq ft</b>

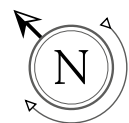
#### KEY

C Cupboard

W Wardrobe



FIRST FLOOR



Floor plans shown are not to scale and ratio may differ to other plans in this document. Apartment layouts are for guidance only. All dimensions are subject to change.

# 12 BROMPTON HOUSE

## 3 BEDROOM FIRST FLOOR

Three bedroom three bathroom first floor apartment with bi-fold doors opening onto a private, south facing balcony that offers views across the grounds.

# CONTEMPORARY COLLECTION

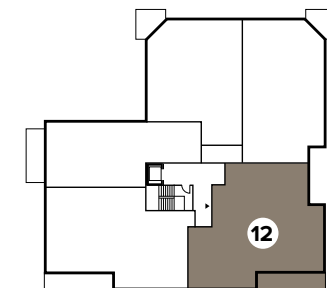
### ROOM DIMENSIONS

Drawing Room/Dining/Kitchen	9.77m x 8.00m	32' 1" x 26' 3"
Master Bedroom	4.48m x 3.27m	14' 8" x 10' 9"
Bedroom 2	3.76m x 3.21m	12' 4" x 10' 6"
Bedroom 3	6.01m x 2.77m	19' 9" x 9' 1"
<b>Total Area</b>	<b>182 sq m</b>	<b>1,967 sq ft</b>
<b>Outside Area</b>	<b>14 sq m</b>	<b>151 sq ft</b>

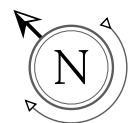
### KEY

C Cupboard

W Wardrobe



FIRST FLOOR



Floor plans shown are not to scale and ratio may differ to other plans in this document. Apartment layouts are for guidance only. All dimensions are subject to change.

# CONTEMPORARY COLLECTION

## ROOM DIMENSIONS

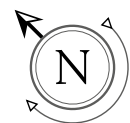
Drawing Room/Dining/Kitchen	8.60m x 6.94m	28' 2" x 22' 9"
Master Bedroom	5.12m x 2.96m	16' 10" x 9' 8"
Bedroom 2	3.79m x 2.72m	12' 5" x 8' 11"
Bedroom 3	4.11m x 3.29m	13' 6" x 10' 10"
<b>Total Area</b>	<b>166 sq m</b>	<b>1,792 sq ft</b>
<b>Outside Area</b>	<b>14 sq m</b>	<b>151 sq ft</b>

## KEY

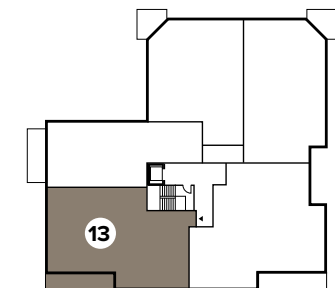
C Cupboard      W Wardrobe

## 13 BROMPTON HOUSE 3 BEDROOM FIRST FLOOR

Three bedroom three bathroom first floor apartment, with views of the grounds from its private, south facing balcony.



Floor plans shown are not to scale and ratio may differ to other plans in this document. Apartment layouts are for guidance only. All dimensions are subject to change.



FIRST FLOOR

# 14 BROMPTON HOUSE

## 3 BEDROOM PENTHOUSE

### SECOND FLOOR

Three bedroom three bathroom second floor apartment with a wrap around terrace which offers views of the Colne Valley Regional Park.

# CONTEMPORARY COLLECTION

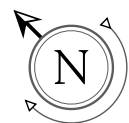
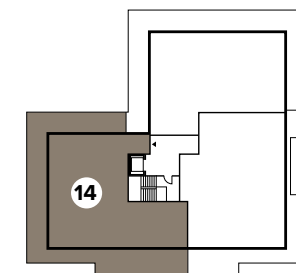
### ROOM DIMENSIONS

Drawing Room/Dining/Kitchen	11.12m x 5.18m	36' 6" x 17' 0"
Master Bedroom	4.99m x 3.05m	16' 4" x 10' 0"
Bedroom 2	4.34m x 2.84m	14' 3" x 9' 4"
Bedroom 3	4.34m x 2.83m	14' 3" x 9' 3"
<b>Total Area</b>	<b>165 sq m</b>	<b>1,781 sq ft</b>
<b>Outside Area</b>	<b>93 sq m</b>	<b>1,003 sq ft</b>

### KEY

C Cupboard

W Wardrobe



Floor plans shown are not to scale and ratio may differ to other plans in this document. Apartment layouts are for guidance only. All dimensions are subject to change.

# CONTEMPORARY COLLECTION

## 15 BROMPTON HOUSE 3 BEDROOM PENTHOUSE SECOND FLOOR

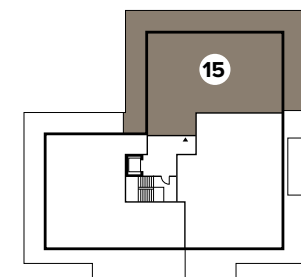
### ROOM DIMENSIONS

Drawing Room/Dining/Kitchen	10.24m x 5.82m	33' 7" x 19' 1"
Master Bedroom	5.51m x 3.35m	18' 1" x 11' 0"
Bedroom 2	3.35m x 3.23m	11' 0" x 10' 7"
Bedroom 3	4.10m x 2.65m	13' 5" x 8' 8"
<b>Total Area</b>	<b>163 sq m</b>	<b>1,758 sq ft</b>
<b>Outside Area</b>	<b>85 sq m</b>	<b>923 sq ft</b>

### KEY

C Cupboard      W Wardrobe

Three bedroom three bathroom second floor apartment with a wrap around terrace, accessible from both the drawing room and master bedroom.



Floor plans shown are not to scale and ratio may differ to other plans in this document. Apartment layouts are for guidance only. All dimensions are subject to change.

# CONTEMPORARY COLLECTION

## 16 BROMPTON HOUSE 3 BEDROOM PENTHOUSE SECOND FLOOR

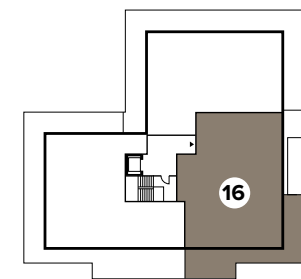
### ROOM DIMENSIONS

Drawing Room/Dining/Kitchen	11.29m x 9.17m	37' 1" x 30' 1"
Master Bedroom	4.19m x 3.51m	13' 9" x 11' 6"
Bedroom 2	3.69m x 3.00m	12' 1" x 9' 10"
Bedroom 3	3.69m x 3.00m	12' 1" x 9' 10"
<b>Total Area</b>	<b>178 sq m</b>	<b>1,919 sq ft</b>
<b>Outside Area</b>	<b>38 sq m</b>	<b>419 sq ft</b>

### KEY

C Cupboard      W Wardrobe

Three bedroom three bathroom second floor apartment with an expansive, south facing private terrace.

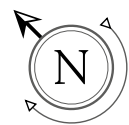
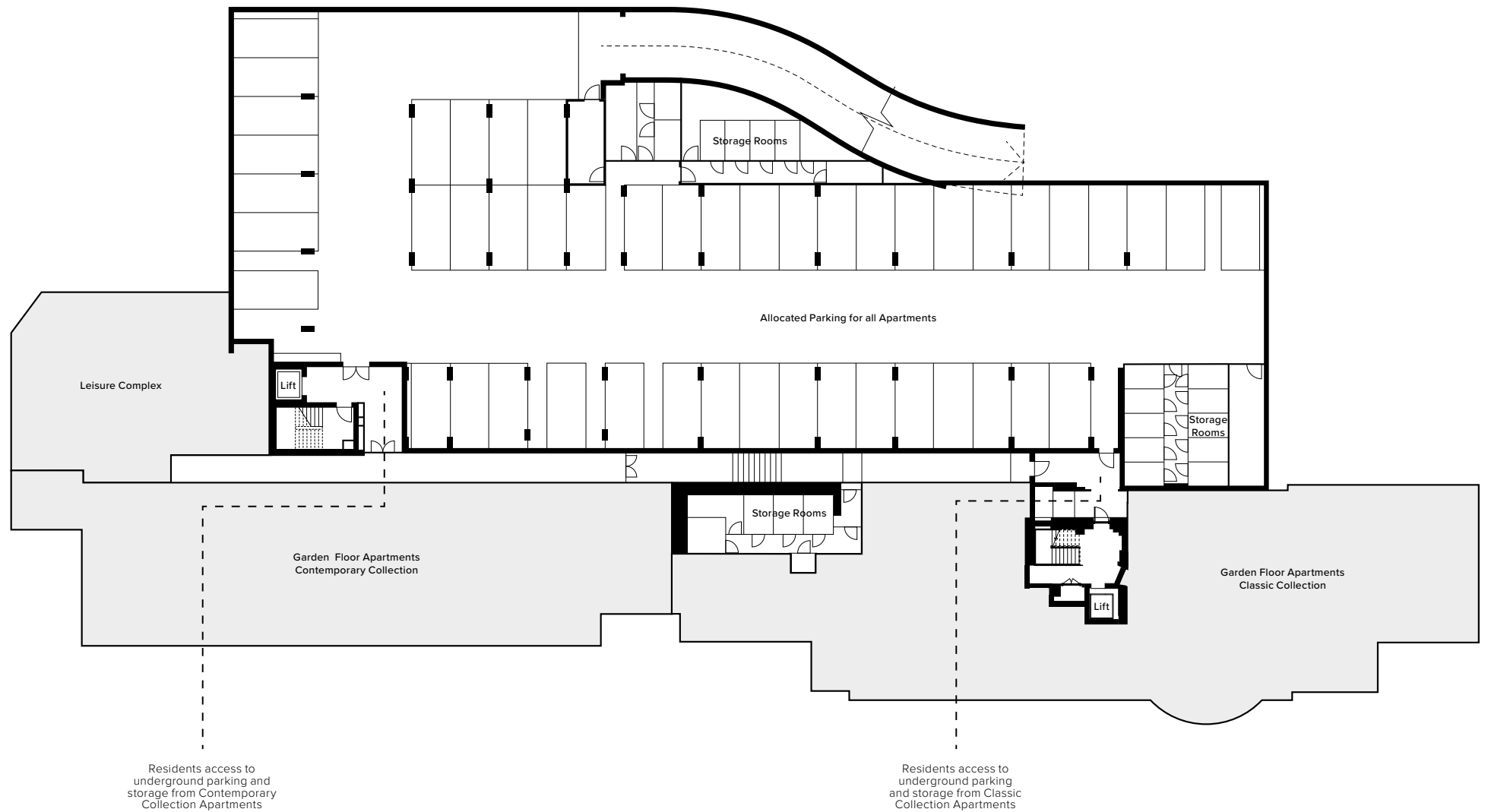


Floor plans shown are not to scale and ratio may differ to other plans in this document. Apartment layouts are for guidance only. All dimensions are subject to change.



# PARKING AND STORAGE GARDEN FLOOR

Secure underground area with allocated parking for two cars for each apartment and large individual storage rooms.



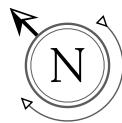
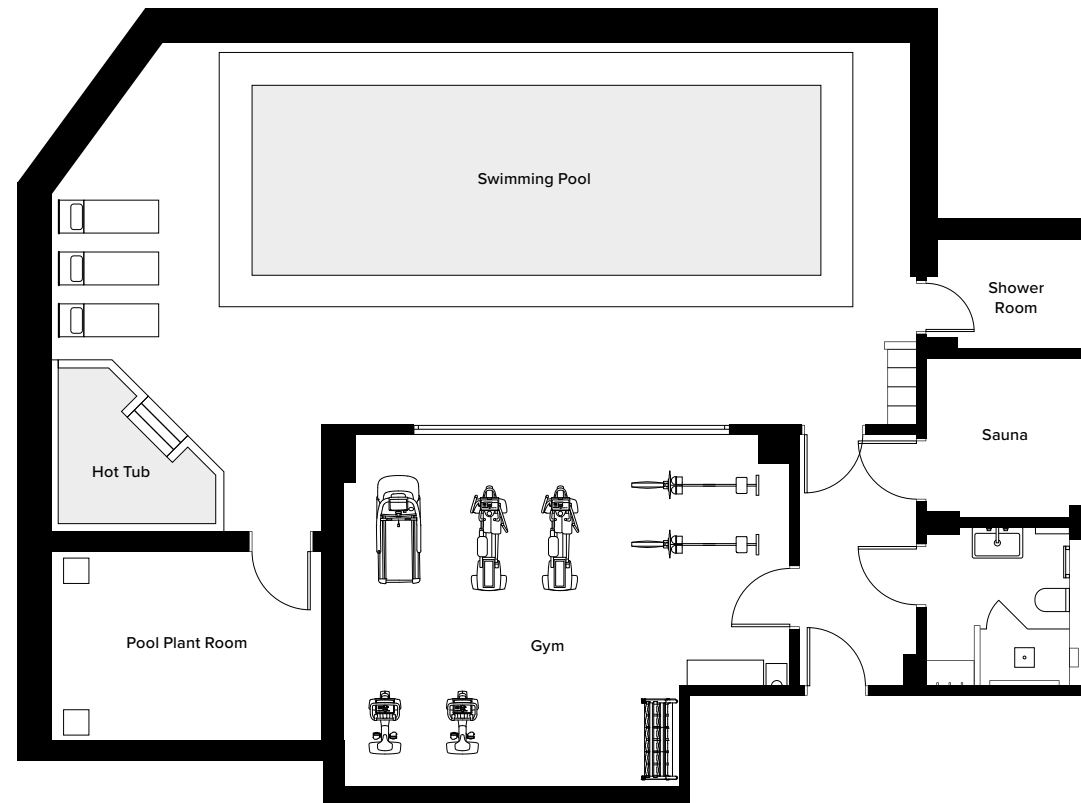
Floor plans shown are not to scale and ratio may differ to other plans in this document. Apartment layouts are for guidance only. All dimensions are subject to change.



# HAREFIELD PLACE

## LEISURE COMPLEX GARDEN FLOOR

Luxury wellness facilities including an indoor heated pool and fully-equipped gymnasium with changing facilities.



Floor plans shown are not to scale and ratio may differ to other plans in this document.  
Apartment layouts are for guidance only. All dimensions are subject to change.







## HAREFIELD PLACE

# DESIGN & DETAIL

### INTERIOR FEATURES

- Interior design
  - Fully fitted bespoke handmade kitchens with Siemens appliances and granite work surfaces
  - Option of high quality engineered solid wood flooring (subject to T's & C's) to selected rooms, carpets to the remainder
  - Bespoke cornice, architraves and skirtings
  - Underfloor heating
  - Intruder and fire alarms
  - Minoli porcelain tiling to bathroom floors and walls
  - Satin brass door handles
  - Quooker flex all-in-one mixer and boiling tap
  - White sanitaryware with brushed brass or chrome fittings
  - Satin brass or chrome ironmongery throughout
  - Fully fitted bespoke wardrobes
- 

### EXTERIOR FEATURES

- Extensive landscaped grounds extending to almost 8.5 acres
  - Large private balconies and terraces to most apartments
  - Long sweeping private driveway, approached via electrically operated entrance gates
  - Lake with meandering footpaths
  - Extensive views over Buckinghamshire and beyond
  - Security lighting
- 

### HEATING, ELECTRICAL & LIGHTING

- Underfloor heating throughout
  - LED downlights throughout
  - Dimmer switches to drawing room, kitchen and dining area
  - External terrace and balcony lighting
- 

### NETWORK & COMMUNICATIONS

- Pre-wired for home automation systems
- 

### SECURITY

- Electrically operated main entrance gate
  - Manned Gate House (selected times)
  - Video entry system to all apartments
  - Security & fire alarm system
  - Estate Management facilities
- 

### PARKING & STORAGE

- Lift access to all floors and underground parking
  - Underground parking for each apartment
  - Individual storage for each apartment
  - Option for electric vehicle charging points in selected parking bays
  - Ample visitor parking
- 

### LEISURE FACILITIES

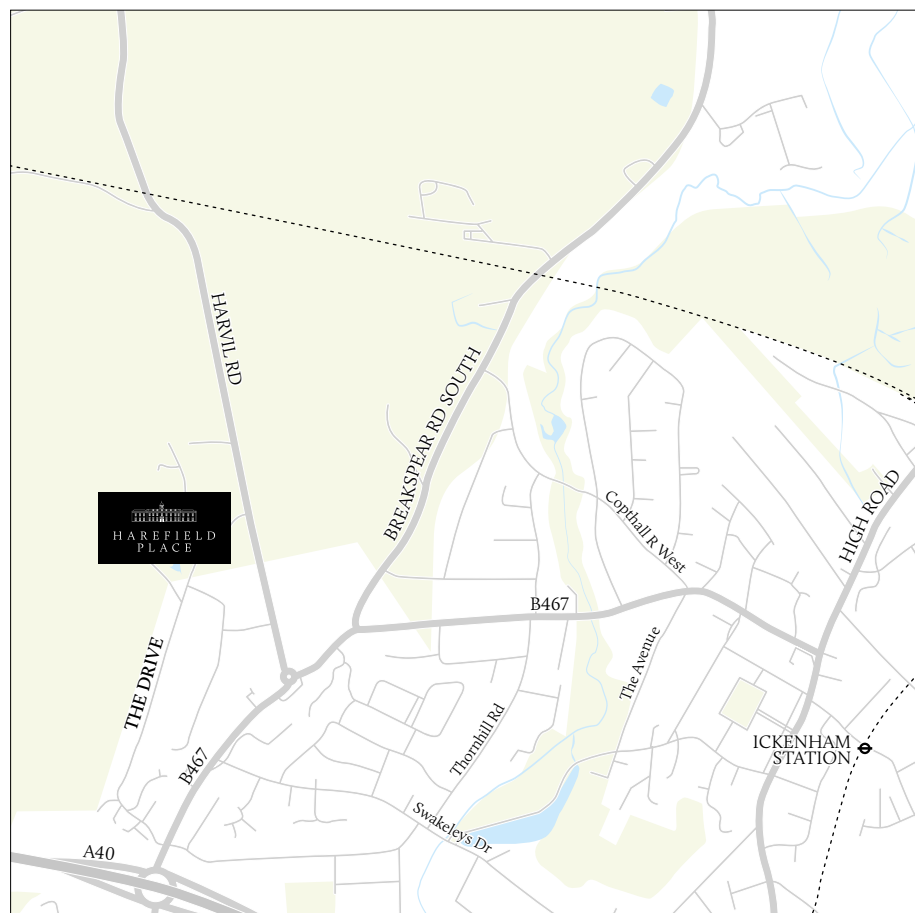
- Swimming pool, sauna, steam room, fully equipped gymnasium, hot tub and changing room
  - All weather tennis court
- 

### WARRANTY

- 10 Year Checkmate structural warranty
-



# HAREFIELD PLACE



## LOCATION & CONTACTS

For an opportunity to discuss or see for yourself what an extraordinary opportunity Harefield Place offers, please contact:

### ENQUIRIES

+44 (0) 1895 733523  
enquiries@harefieldplace.com  
harefieldplace.com

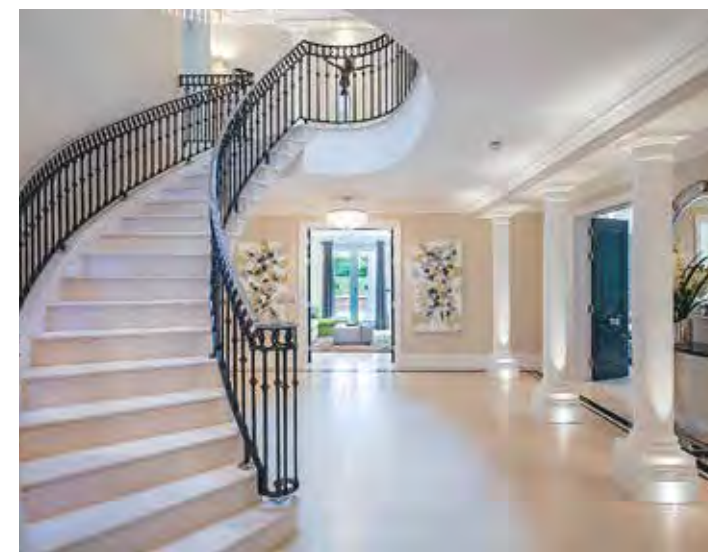
### SITE ADDRESS

Harefield Place  
The Drive  
Ickenham  
Middlesex  
UB10 8AQ

By appointment only.

Manorgrove Homes and Jade Development Enterprises are a highly regarded residential development partnership, recognised for delivering luxury homes of exceptional quality. Operating throughout Buckinghamshire and the surrounding counties, they bring together the very best in design, planning and build to ensure that each of their homes offers a premier location, complemented by superb quality, providing a truly special home.

[www.manorgrovehomes.co.uk](http://www.manorgrovehomes.co.uk)



### Marketing Agents



### Selling Agents



Please note the development name of Harefield Place is for marketing purposes only

Statements in this brochure are believed to be accurate at the time of print; however, they are not to be viewed as statements or representations of fact. Therefore, neither selling agents nor Manorgrove Homes Ltd or Jade Development Enterprises Ltd can guarantee their accuracy. Any computer generated images and floor plans are for illustrative purposes only and are intended as a general guide to the appearance and layout of the development upon completion. Manorgrove Homes Ltd and Jade Development Enterprises Ltd reserve the right to make any alterations to the layout, appearance and specification of the development if necessary without formal notice. Dimensions are approximate measurements scaled from plans. Parties interested in viewing the development are encouraged to check plot availability prior to visiting. This brochure is not part of any contract between the developer and interested parties. Travel times and distances are based on measurements supplied by maps.google.com and thetrainline.com. Designed and produced by Avatar Creative.



Jade Development Enterprises Ltd

HAREFIELDPLACE.COM



Jade  
Development  
Enterprises Ltd