



54 Mount Park Road, Pinner

Pinner

Offers in Region of **£615,000**

Lr LAWRENCE RAND

54 Mount Park Road

Pinner, Pinner

A three double bedroom extended family home with additional study located on this popular tree lined road.

Council Tax band: E

Tenure: Freehold

EPC Energy Efficiency Rating: C

EPC Environmental Impact Rating: C

- Three bedroom plus study
- Two bathrooms
- South-West facing garden
- Modern condition throughout
- Off street parking





Lr LAWRENCE RAND



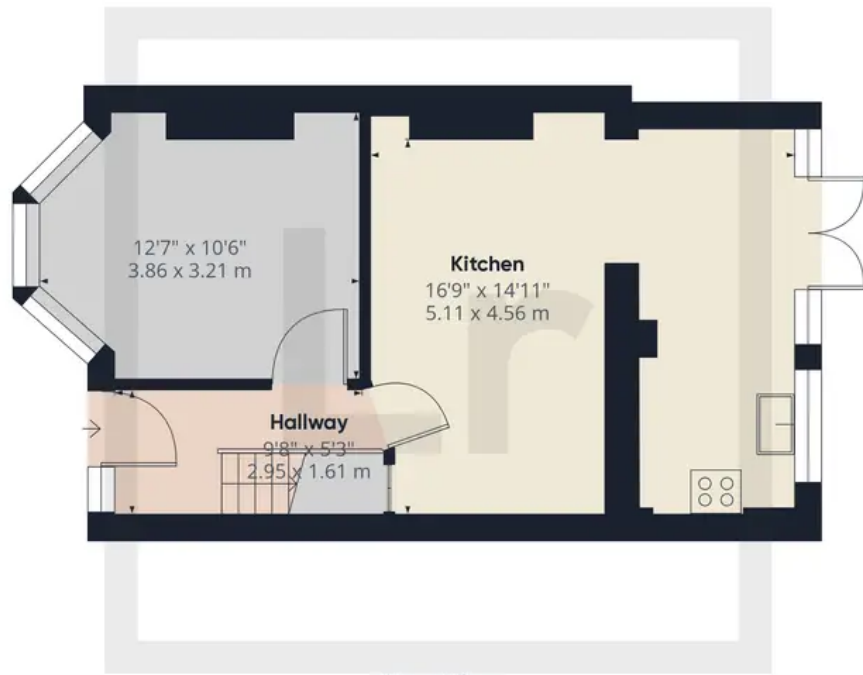
Lr LAWRENCE RAND



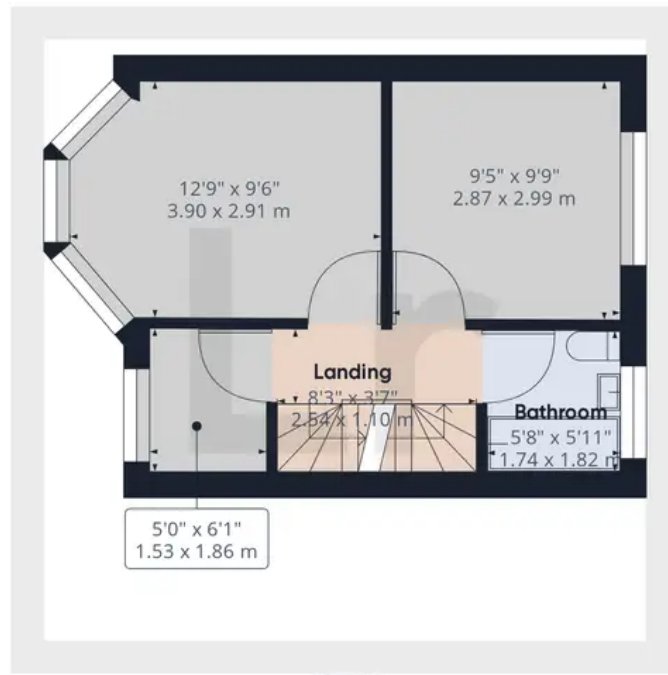
Lr LAWRENCE RAND



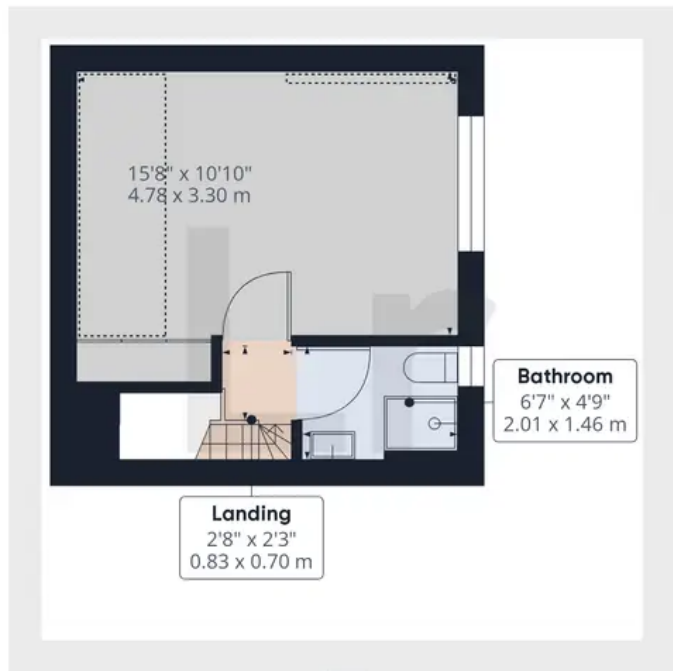
Lr LAWRENCE RAND



Ground Floor



Floor 1



Floor 2

Approximate total area⁽¹⁾

969.91 ft²

90.11 m²

Reduced headroom

40.95 ft²

3.8 m²

(1) Excluding balconies and terraces

Reduced headroom
(below 1.5m/4.92ft)

While every attempt has been made to ensure accuracy, all measurements are approximate, not to scale. This floor plan is for illustrative purposes only.



Lawrence Rand

Lawrence Rand, 106 Victoria Road - HA4 0AL

01895 632211

Info@lawrence-rand.co.uk

www.lawrence-rand.co.uk/



LAWRENCE RAND