



**54 Mount Park Road, Pinner**

Pinner

Offers in Region of **£600,000**

**Lr** LAWRENCE RAND

# 54 Mount Park Road

Pinner, Pinner

Three double-bedroom plus study extended family home located on this popular tree lined road.  
Council Tax band: E

Tenure: Freehold

EPC Energy Efficiency Rating: C

EPC Environmental Impact Rating: C

- Three bedroom plus study
- Two bathrooms
- South-West facing garden
- Modern condition throughout
- Off street parking





**Lr** LAWRENCE RAND



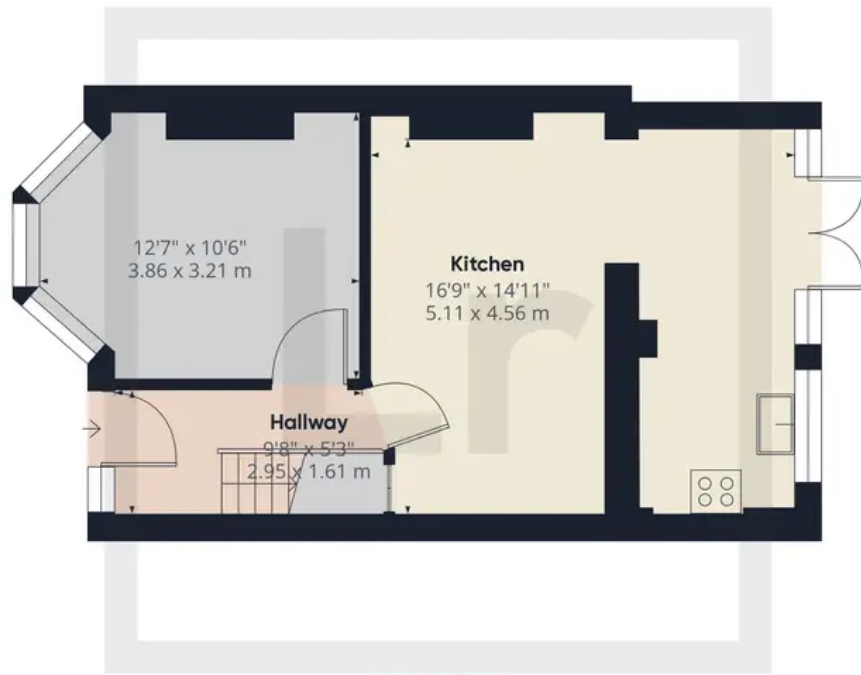
**Lr** LAWRENCE RAND



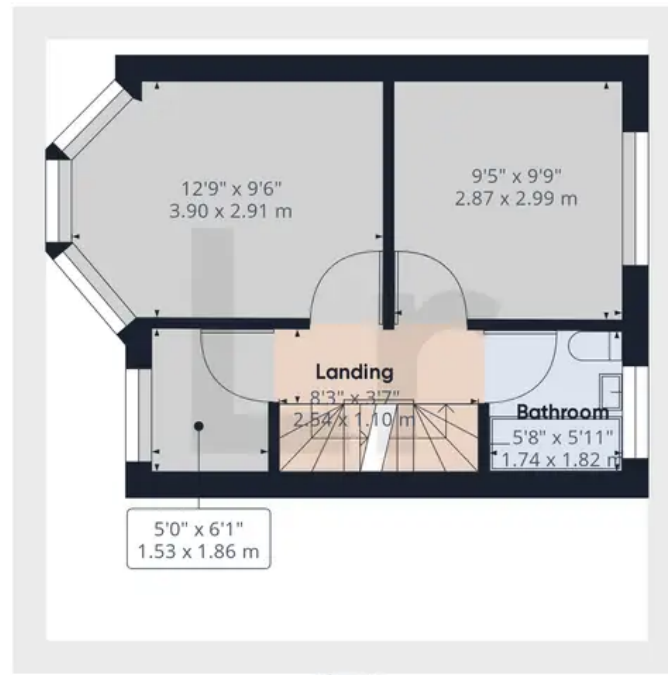
**Lr** LAWRENCE RAND



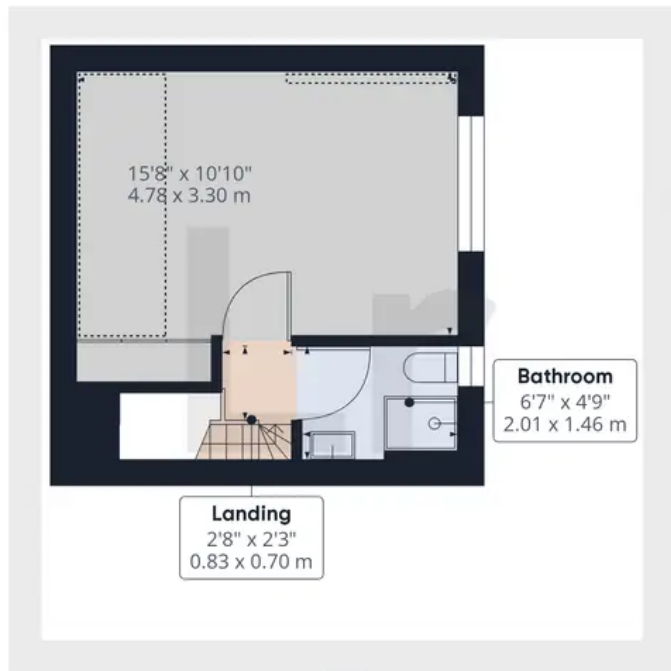
**Lr** LAWRENCE RAND



Ground Floor



Floor 1



Floor 2

**Approximate total area<sup>(1)</sup>**

969.91 ft<sup>2</sup>

90.11 m<sup>2</sup>

**Reduced headroom**

40.95 ft<sup>2</sup>

3.8 m<sup>2</sup>

(1) Excluding balconies and terraces

Reduced headroom  
(below 1.5m/4.92ft)

While every attempt has been made to ensure accuracy, all measurements are approximate, not to scale. This floor plan is for illustrative purposes only.



## Lawrence Rand

Lawrence Rand, 106 Victoria Road - HA4 0AL

01895 632211

[Info@lawrence-rand.co.uk](mailto:Info@lawrence-rand.co.uk)

[www.lawrence-rand.co.uk/](http://www.lawrence-rand.co.uk/)



**LAWRENCE RAND**