



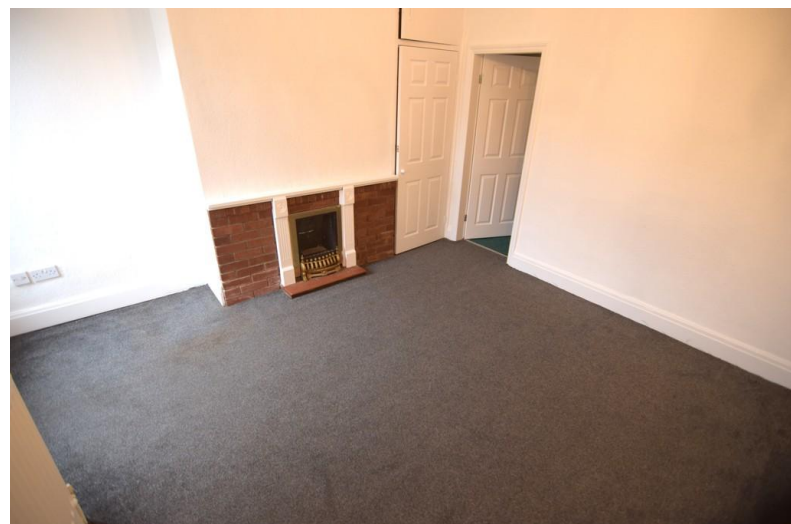
Bela Grove, Blackpool

Lancashire, FY1 5JZ

- **LARGE 2/3 BEDROOM MID TERRACED HOUSE**
- **1/2 RECEPTION ROOMS**
- **GAS CENTRAL HEATING**
- **MOVE IN FUNDS £1,615.38**

£750 pcm

EPC Rating '59'





Property Description

Deceptively spacious 2/3 bedroom mid terraced house, situated in a convenient location close to shops, schools, transport links and other local amenities.

Accommodation comprising entrance hallway, lounge, 2nd reception room/ground floor bedroom, fitted kitchen, two first floor double bedrooms & three piece bathroom. Externally with easily maintained gardens areas to the front & rear. The property also benefits from gas central heating and double glazing.

1 months rent in advance & 5 weeks rent as deposit.



ENTRANCE HALL

LOUNGE

14' 3" x 12' 2" (4.34m x 3.71m)

2ND RECEPTION ROOM/BEDROOM

13' 0" x 12' 0" (3.96m x 3.66m)

KITCHEN

10' 0" x 10' 6" (3.05m x 3.2m)

BEDROOM 1

16' 5" x 11' 8" (5m x 3.56m)

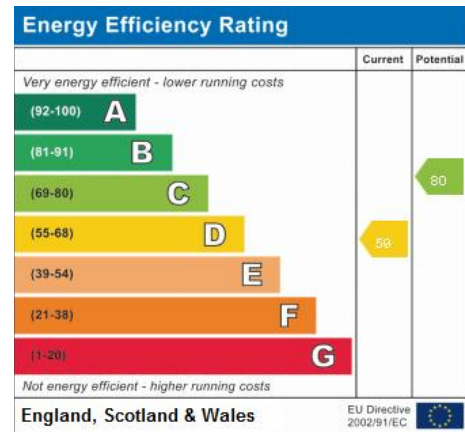


BEDROOM 2

14' 7" x 8' 6" (4.44m x 2.59m)

BATHROOM

9' 3" x 7' 4" (2.82m x 2.24m)



21 Counce Street
Blackpool
Lancashire
FY1 3LA

www.moveholmes.co.uk
01253 928200
enquiries@moveholmes.co.uk

Agents Note: Whilst every care has been taken to prepare these sales particulars, they are for guidance purposes only. All measurements are approximate and are for general guidance purposes only and whilst every care has been taken to ensure their accuracy, they should not be relied upon and potential buyers are advised to recheck the measurements