



# 4 bedroom Detached House located in Mistley.

Guide Price  
£375,000 - £400,000

Find us on..



JOHN ALEXANDER  
ESTATE AGENTS



JOHN ALEXANDER  
ESTATE AGENTS

Seafeld Avenue  
Mistley  
Manningtree  
CO11 1UE

FULL DESCRIPTION

OVERVIEW

\*\*\*GUIDE PRICE of £375,000 -  
£400,000\*\*\*

John Alexander are pleased to present to market this four bedroom detached family home situated in the popular village of Mistley which is just on the outskirts of the popular Manningtree Town Centre which offers an array of bars, restaurants, local shops, supermarket, estuary and train station which has direct links to London Liverpool Street, Ipswich and Norwich.

Property benefits include lounge, dining room, kitchen, cloakroom/utility, four bedrooms, a family bathroom, enclosed rear garden with a garage and driveway which provides ample parking.

DETAILS

Entrance Hall

17' 8" x 6' 3"

Cloakroom / Utility Room

6' 2" x 4' 8"

Living Room

18' 10" x 11' 4"

Dining Room

11' 4" x 10' 6"

Kitchen

11' 3" x 7' 8"

Landing

Bedroom One

14' 9" x 9' 7"

Bedroom Two

11' 5" x 9' 7"

Bedroom Three

11' 4" x 8' 8"

Bedroom Four

8' 8" x 8' 3"

Bathroom

7' 2" x 5' 7"

Outside

Agents note

Garage



4



1



0



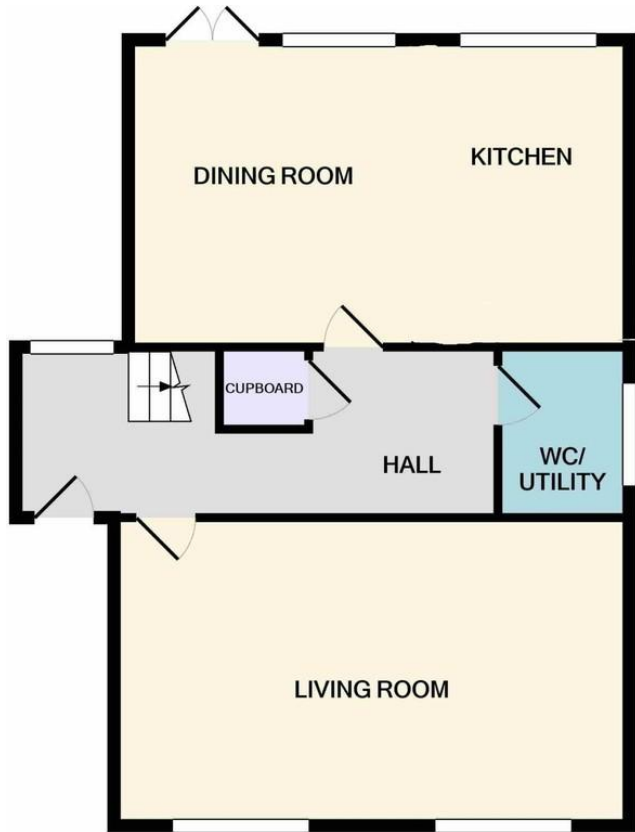
EPC

TBC

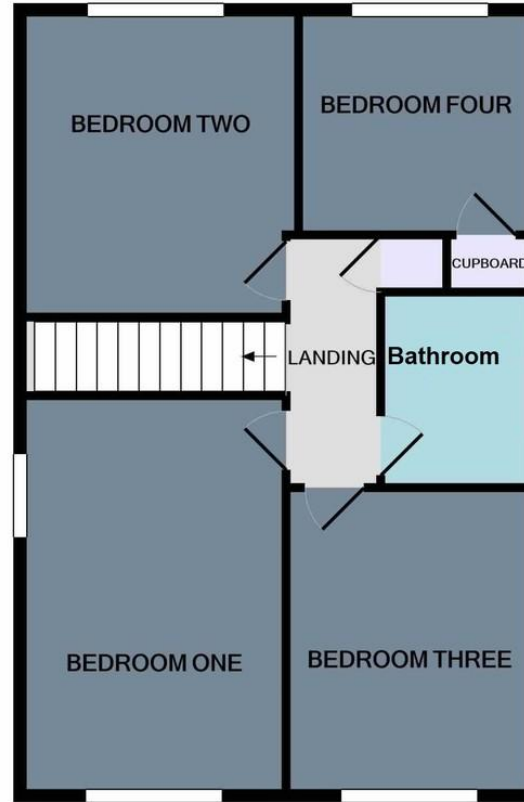




## FLOORPLAN



GROUND FLOOR



1ST FLOOR

Measurements are approximate. Not to scale. Illustrative purposes only  
Made with Metropix ©2020

## DIRECTIONS

### CONTACT

99 London Road  
Stanway  
Colchester  
Essex  
CO3 0NY

E [sales@john-alexander.co.uk](mailto:sales@john-alexander.co.uk)

T 01206 656007

[www.john-alexander.co.uk](http://www.john-alexander.co.uk)

Find us on..



**JOHN ALEXANDER**  
ESTATE AGENTS