



26 Keatley Place, Moreton-in-Marsh  
Moreton-in-Marsh

£175,000

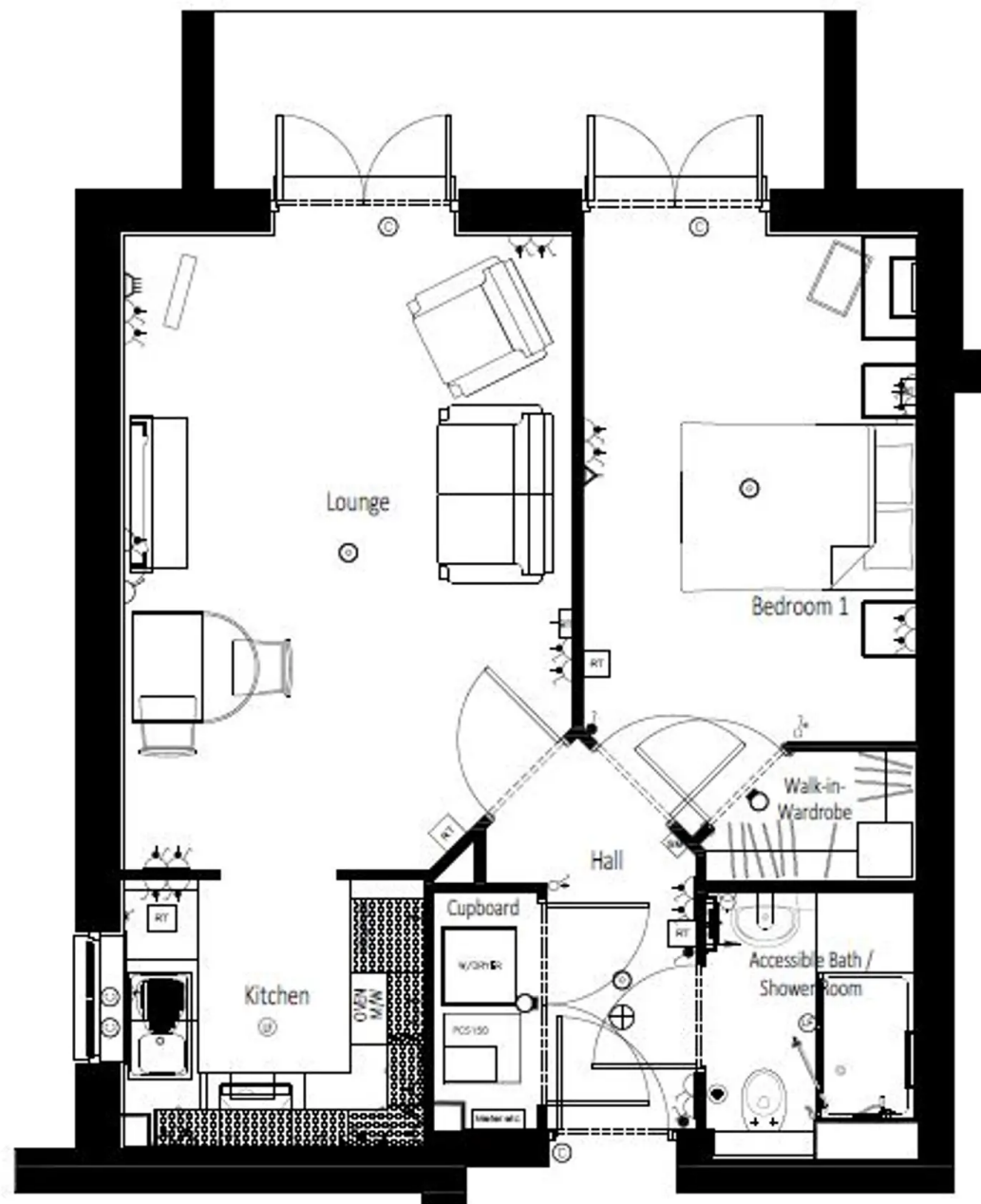


A well-presented one double bedroom ground floor apartment is brand new and under warranty and designed and built for the over 60's by McCarthy & Stone, beautifully presented and situated just a short level walk from the High Street and mainline rail station to Oxford/London. Entrance hall, video entry door system, walk in storage cupboard, large sitting/dining room with double doors out to a private patio space and further landscaped communal grounds, modern kitchen with integrated appliances, double bedroom and accessible shower room with WC. The apartment has underfloor heating throughout. There are some fabulous benefits to living Keatley Place: a house manager on hand during the day, a 24 hour emergency call system, the 'homeowners lounge' with tea and coffee on hand so you can sit and chat with your neighbours, a guest suite bookable for family and friends to stay overnight in (additional charge) and beautifully landscaped gardens to sit and enjoy without the worry of maintaining them. Leasehold: 999 years Ground Rent: £0 per annum Maintenance Charge: £2,848 per annum.



Moreton in Marsh is a north Cotswold town offering a broad range of local amenities, with library, post office, primary school, North Cotswold Hospital, sports facilities and swimming pool open to the public at the renowned Fire College. There are various pubs, hotels, Aldi, CO OP, a Tesco Express and many independent shops. Moreton in Marsh is also host of the largest street market in the Cotswolds which runs every Tuesday, is a stones throw away from Batsford Arboretum and Gardens and the Cotswold Falconry Centre, with the award winning Daylesford Organic Farm and Stores just around the corner. Moreton In Marsh also has its train station, with a direct line running regularly between Worcester and London Paddington.





Harrison Hardie

17 High Stree, Moreton-in-Marsh GL56 0AF

[harrisonhardie.co.uk](http://harrisonhardie.co.uk) 01608 651000