



Newcombe Road, Earlsdon, Coventry CV5 6NN

Guide Price £179,950



Newcombe Road

Earlsdon, Coventry

In this ever popular location just off Albany Road, this three bedroom home has been freshly modernised to a high standard and is available with no chain. Very competitively priced.

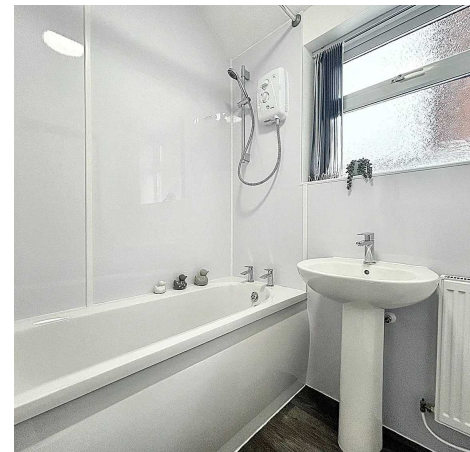
Council Tax band: B

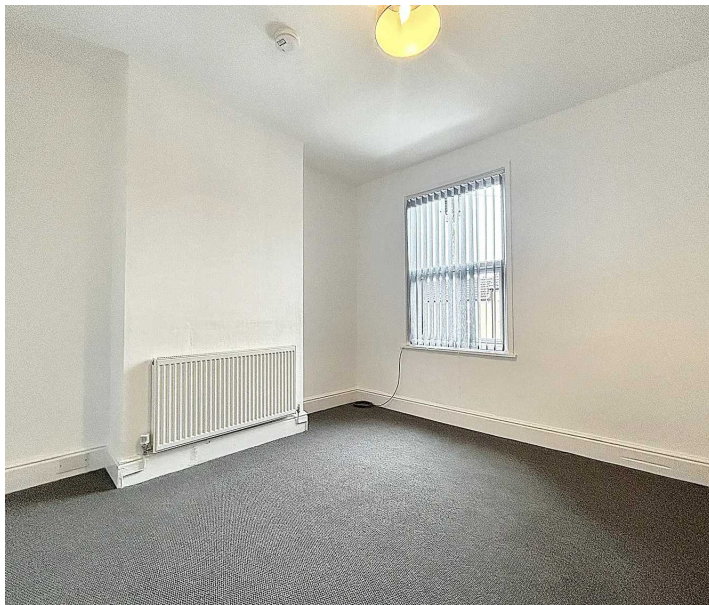
Tenure: Freehold

EPC Energy Efficiency Rating: D

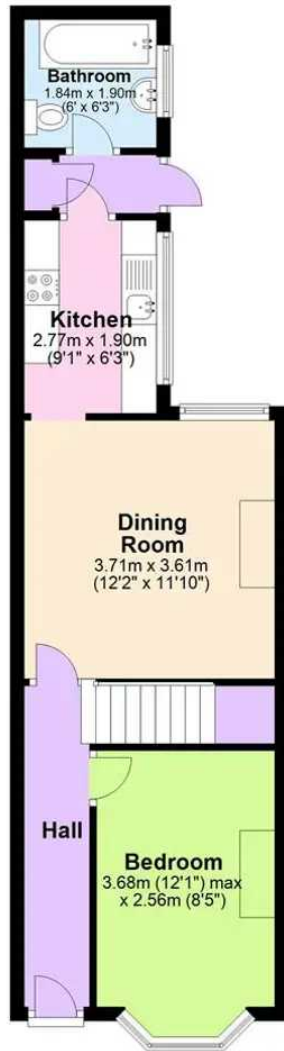
EPC Environmental Impact Rating: E

- Very convenient and popular location
- Two living rooms
- Refitted kitchen and bathroom
- Three bedrooms over two floors
- Gas central heating and double glazing
- Easy walk into Earlsdon 'Village'
- New decor and carpets

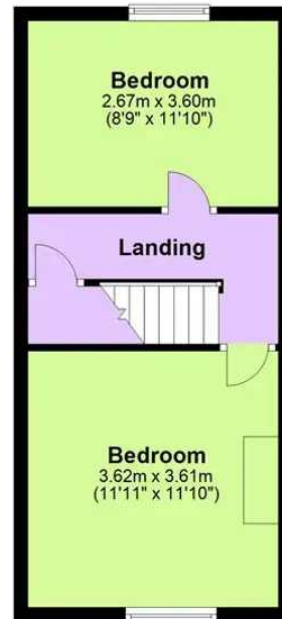




Ground Floor



First Floor



Second Floor



Total area: approx. 88.5 sq. metres (952.1 sq. feet)

This floor plan is for illustrative purposes only and should be used as such by any prospective purchaser. Whilst every attempt has been made to ensure the accuracy of this plan, measurements of doors, windows, rooms and other items are approximate and no responsibility is taken for any error, omission or mis-statement.
Plan produced using PlanUp.

Coopers Estate Agents

Coopers, 22 New Union Street - CV1 2HN

024 7655 2841 • sales@coopersestateagents.com • www.coopersestateagents.com/

Coopers Chartered Surveyors Ltd, 22 New Union Street, Coventry, West Midlands

CV1 2HN, 024 7655 2841, sales@coopers-cov.com. Company Registration

Number: 6725089 / VAT number: 940 3555 34