



Poplar House Silfield Street, Silfield
£1,000,000

Poplar House Silfield Street

Silfield, Wymondham

Live the life of luxury in this luxury property by CGD Developments, situated on a private 2-acre plot and nestled in serene countryside. Offering 5 bedrooms, 3 ensembles and a family bathroom, high-end finishes, underfloor heating, this contemporary retreat offers unrivalled tranquillity within the Norfolk countryside.

Tenure: Freehold



Minors
& Brady

Estate Agents, Lettings and
Property Management



Poplar House,
Silfield

uated on a private 2-acre plot (STMS), this magnificent propers the ultimate retreat from the hustle and bustle of everyday



Poplar House Silfield Street

Silfield, Wymondham

Poplar House is a true one-of-a-kind masterpiece; this luxury home is being expertly crafted by CGD Developments, known for its unparalleled attention to detail and commitment to excellence. Situated on a private 2-acre plot (STMS), this magnificent property offers the ultimate retreat from the hustle and bustle of everyday life. Surrounded by rolling fields and picturesque countryside, the home boasts a sense of tranquillity and privacy that is truly unrivalled.

Location

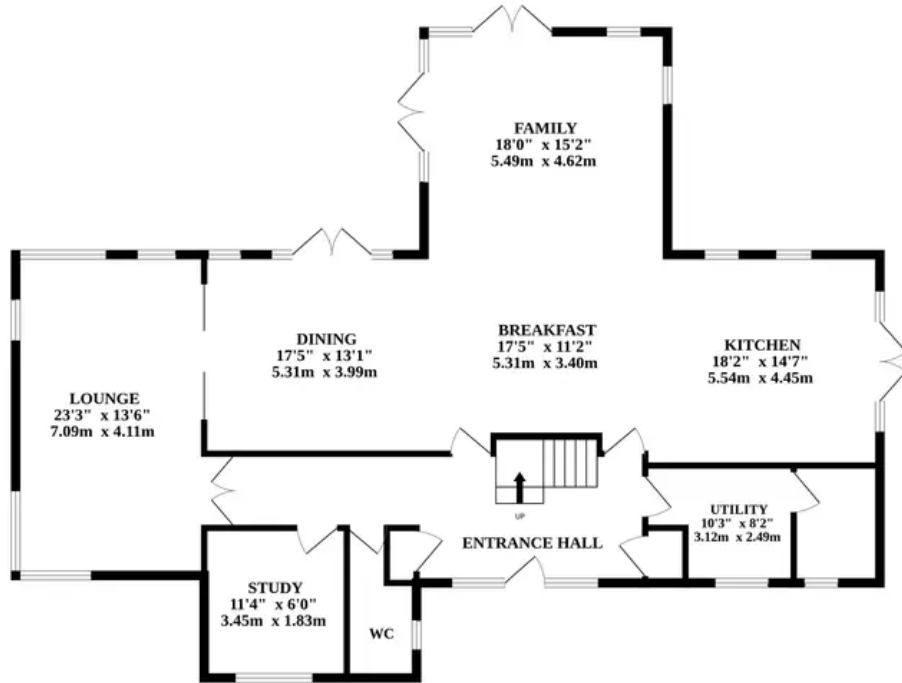
Silfield, nestled in Norfolk, England, is a charming village with a serene atmosphere. Quaint cottages, surrounded by lush countryside, line its narrow lanes. Steeped in history, landmarks like the parish church tell stories of its rich heritage. Outdoor enthusiasts can explore scenic walking trails amidst breathtaking natural beauty. Silfield offers a tranquil retreat from modern life, inviting visitors to savor its timeless charm and simplicity.

Poplar House

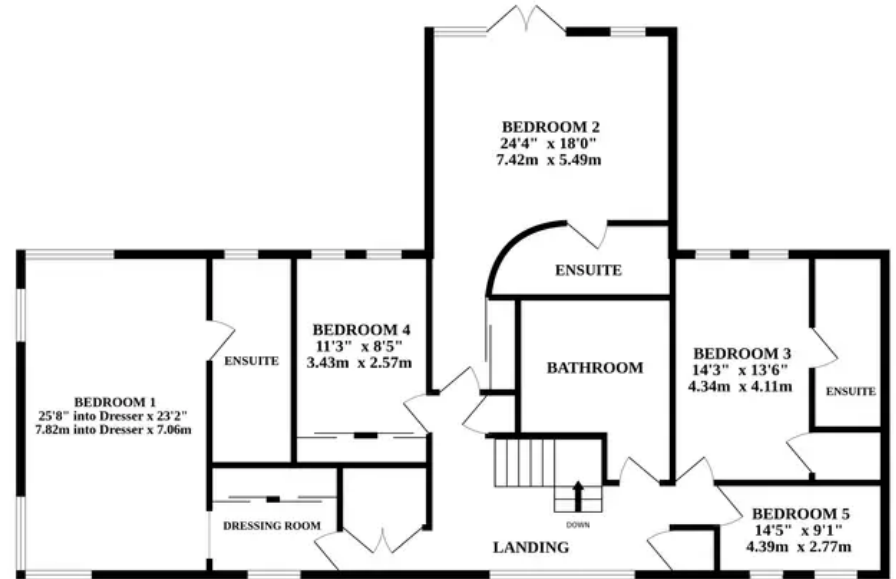
The high standard spec list showcases the finest materials and finishes, with no expense spared in creating a residence that exudes quality and refinement. The seamless blend of tasteful design elements and natural surroundings creates a harmonious living space that is both inviting and tranquil. Every detail has been meticulously considered to enhance the property's overall aesthetic appeal.



GROUND FLOOR



1ST FLOOR



Whilst every attempt has been made to ensure the accuracy of the floorplan contained here, measurements of doors, windows, rooms and any other items are approximate and no responsibility is taken for any error, omission or mis-statement. This plan is for illustrative purposes only and should be used as such by any prospective purchaser. The services, systems and appliances shown have not been tested and no guarantee as to their operability or efficiency can be given.
 Made with Metropix ©2024

