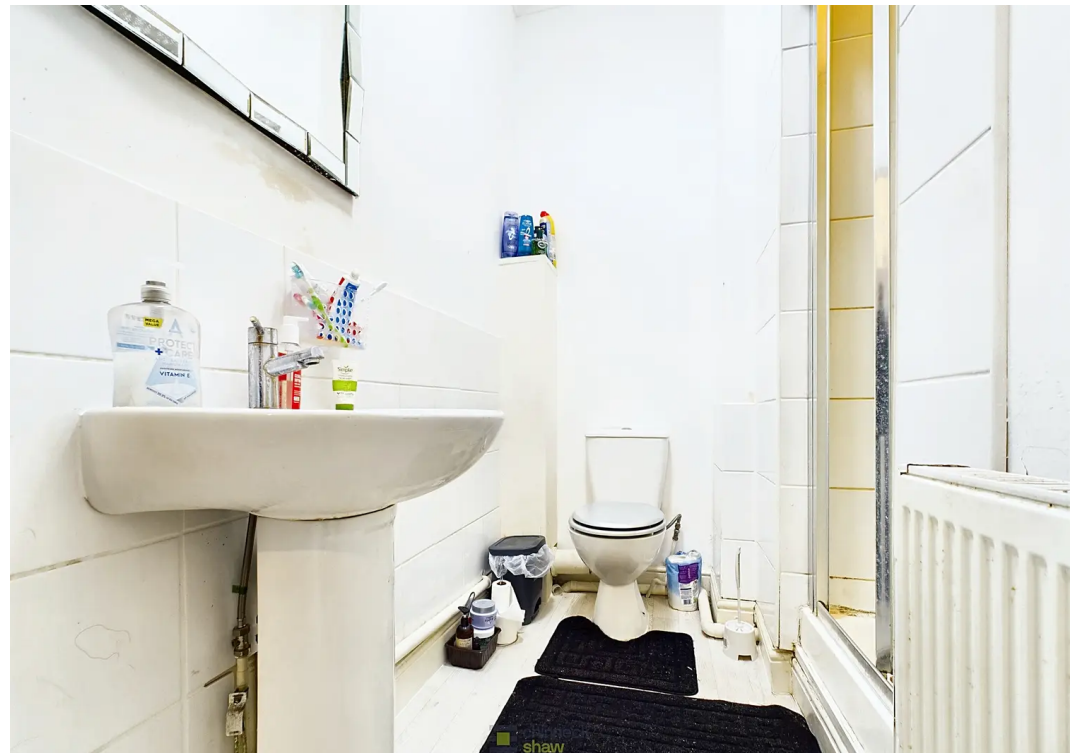
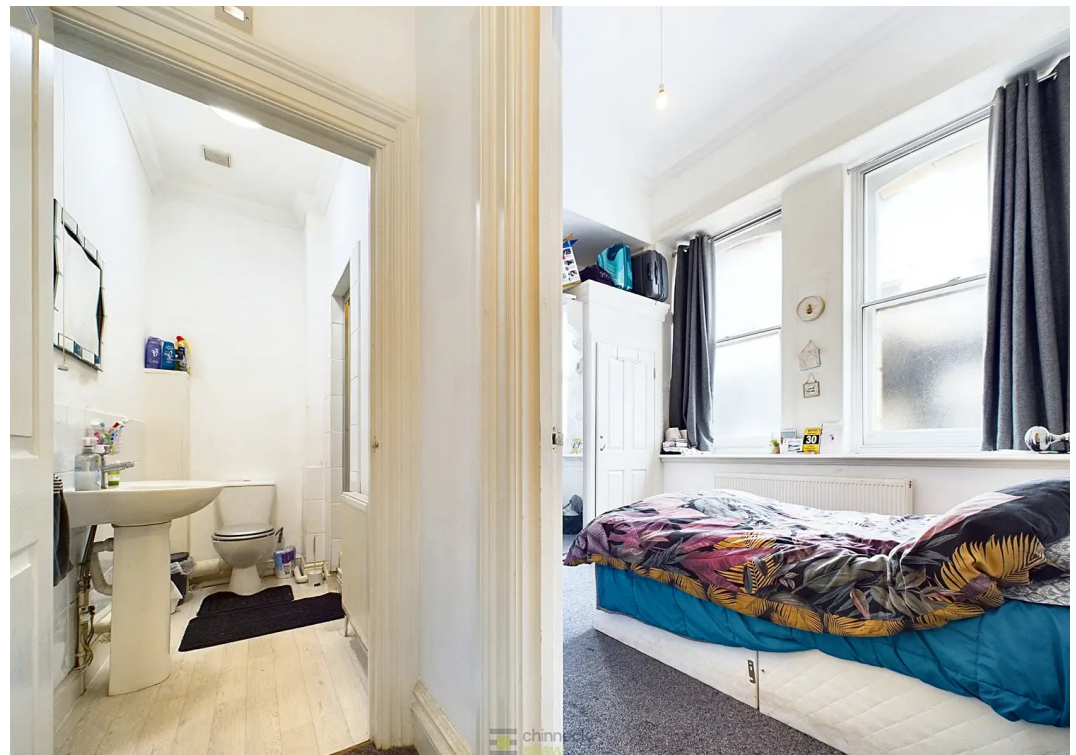




Apt 35, Charter House Lord Montgomery Way, Portsmouth
Portsmouth

Offers in Region of **£120,000**

 **chinneckshaw**



Apartment 35

Charter House Lord Montgomery Way,
Portsmouth

Welcome to this 1-bedroom ground floor flat. As we step into this ground floor apartment, you are immediately drawn to the high ceilings that create an airy and spacious atmosphere. Perfect for those looking for an investment opportunity, this property is currently let and is a dream for those looking for a rental income.

The kitchen/Living area is a well-designed space seamlessly combining functionality and comfort. The kitchen area features ample storage, while the living area provides a cosy space. The property also has a secure entrance system equipped with a phone for added convenience and peace of mind. This property's potential for rental income is a fantastic opportunity for investors looking to expand their portfolio. With its current tenancy in place, you can start reaping the rewards from day one.

This 1-bedroom ground floor flat is a wise investment choice that offers both financial stability and a comfortable living space. Its high ceilings, secure entrance system, and proximity to local amenities make it an attractive option for anyone looking to secure a place in the rental market. Don't miss out on the chance to view this property.

Contact us today to arrange a viewing.

Council Tax band: B

Tenure: Leasehold





Approximate total area⁽¹⁾

467.19 ft²

43.4 m²

(1) Excluding balconies and terraces

While every attempt has been made to ensure accuracy, all measurements are approximate, not to scale. This floor plan is for illustrative purposes only.

GIRAFFE360



Chinneck Shaw

Bridge House, Milton Road, Portsmouth – PO3 6AN

023 9282 6731

hello@chinneckshaw.co.uk

www.chinneckshaw.co.uk/

Chinneck Shaw, Bridge House, Milton Road, PO3 6AN Consumer Protection from Unfair Trading Regulations 2008: These details are for guidance only and complete accuracy cannot be guaranteed. If there is any point which is of particular importance, verification should be obtained. The do not constitute a contract or part of a contract. All measurements are approximate. No guarantee can be given with regard to planning permissions or fitness for purpose. No apparatus, equipment, fixture or fitting has been tested. Items shown in the photographs are NOT necessarily included. Interested Parties are advised to check availability and make an appointment to view before travelling to see a property.