



32 Kent Gardens, Ruislip

Ruislip

£800,000



LAWRENCE RAND

# 32 Kent Gardens

Ruislip, Ruislip

Council Tax band: E

Tenure: Freehold

EPC Energy Efficiency Rating: D

EPC Environmental Impact Rating: D

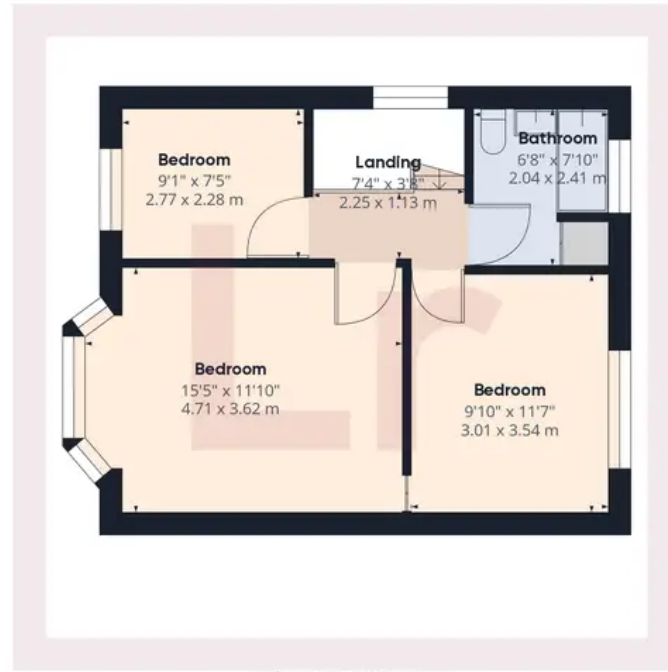
- Spacious Semi-Detached Home
- Large Master Bedroom
- Interconnecting Reception Rooms
- Conservatory
- G/F Cloakroom
- Modern Fitted Kitchen
- Large Rear Garden
- Driveway Parking
- Sizeable Double Garage
- Sought After Cul-de-sac
- Short Walk to Met/Picc Station
- Close to Shops & Schools







Ground Floor Building 1



Floor 1 Building 1

Approximate total area<sup>(1)</sup>

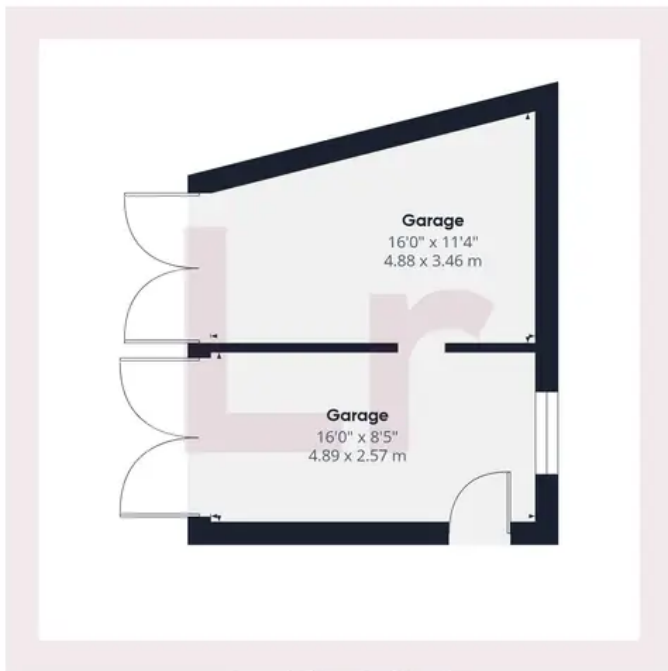
1284.89 ft<sup>2</sup>

119.37 m<sup>2</sup>

(1) Excluding balconies and terraces

While every attempt has been made to ensure accuracy, all measurements are approximate, not to scale. This floor plan is for illustrative purposes only.

GIRAFFE360



Ground Floor Building 2



## Lawrence Rand

Lawrence Rand, 106 Victoria Road - HA4 0AL

01895 632211

[Info@lawrence-rand.co.uk](mailto:Info@lawrence-rand.co.uk)

[www.lawrence-rand.co.uk/](http://www.lawrence-rand.co.uk/)



**LAWRENCE RAND**