

ANWYL
thoughtful homes



the snowdon

3 bed semi-detached

A 2.5 storey 3 bedroom semi-detached home. Key features include *open plan* kitchen, living and dining room with French doors to the rear, 3 bedrooms including master bedroom with en-suite, *dressing room* and separate family bathroom.

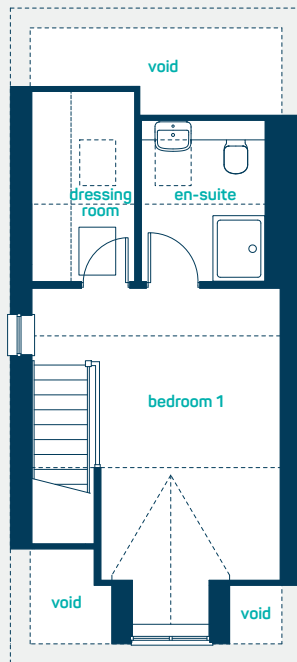
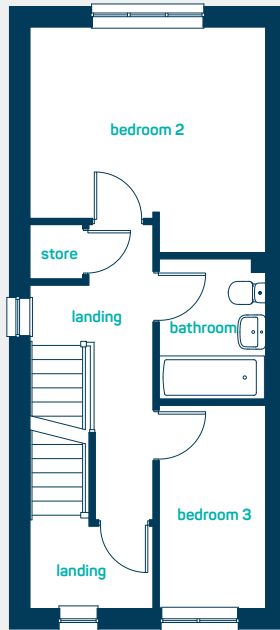
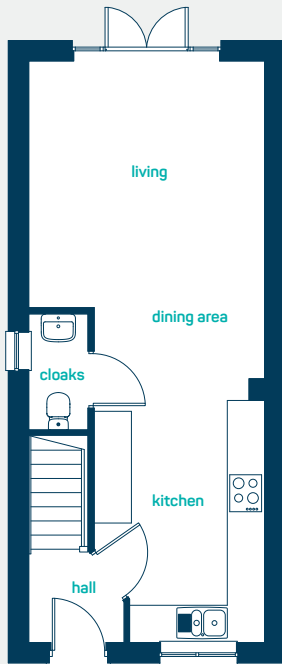
got
questions?

call...

**03300
244 944**

www.anwylhomes.co.uk

everything considered.



ground floor

kitchen/
dining/living 30'9" x 12'6"
cloaks 6'3" x 3'0"

kitchen/
dining/living 9.37m x 3.80m
cloaks 1.90m x 0.91m

first floor

bedroom 2 12'6" x 11'10"
bedroom 3 10'9" x 5'8"
bathroom 7'5" x 5'8"

bedroom 2 3.80m x 3.61m
bedroom 3 3.27m x 1.72m
bathroom 2.26m x 1.72m

second floor

bedroom 1 (inc dorma) 17'0" x 12'6"
dressing room 9'8" x 5'2"
en-suite 9'1" x 6'3"

bedroom 1 (inc dorma) 5.18m x 3.80m
dressing room 2.94m x 1.58m
en-suite 2.77m x 1.90m

get in
touch...
**03300
244 944**

the snowdon

3 bed semi-detached

www.anwylhomes.co.uk

This is a computer generated image of the snowdon, elevation treatment may vary. Room sizes are approximate. Plots may be handed and any garages may be single or double. Kitchen and bathroom layouts are indicative. These plans are correct at the time of going to press, but may be subject to change during construction. Please ensure that you check for specific plot details.
27/10/2020

everything considered.