



Garbo Court, Monroe Close

Salford



Offers in Region of **£160,000**

Garbo Court

Salford

This beautifully presented, two bedroom top floor apartment is situated just a stone's throw from Buile Hill Park. Tastefully decorated throughout, the property features a new kitchen, new bathroom, well-maintained communal gardens and ample communal parking

Council Tax band: B

Tenure: Leasehold

- Beautifully Presented, Two Bedroom Top Floor Apartment
- Stylish Lounge with Plenty of Space
- Modern Fitted Kitchen Diner, Installed in 2022
- Contemporary, Three-Piece Fitted Bathroom
- Two Double Bedrooms
- Boasts Well-Maintained Communal Gardens, with Views Over Buile Hill Park
- Benefits from Ample Communal Parking
- Within Walking Distance of Salford Royal Hospital and Local Amenities
- Ideal First Time Home or Investment
- Viewing is Highly Recommended to Appreciate this Lovely Home!



Entrance Hallway

Complete with a ceiling light point and laminate flooring. Access to loft space.

Lounge

13' 7" x 11' 4" (4.13m x 3.46m)

A bright lounge complete with a ceiling light point, double glazed window and electric radiator. Fitted with laminate flooring.

Kitchen / Diner

11' 2" x 9' 1" (3.41m x 2.77m)

A modern kitchen featuring fitted units with integral washer, fridge freezer, hob and oven. Complete with a ceiling light point, double glazed window and cushioned flooring.

Bathroom

6' 7" x 5' 5" (2.01m x 1.64m)

Featuring a three-piece suite including bath with shower over, hand wash basin and W.C. Complete with a ceiling light point, double glazed window and electric radiator. Fitted with tiled walls and flooring.

Bedroom One

11' 3" x 11' 1" (3.42m x 3.37m)

Complete with a ceiling light point, double glazed window and electric radiator. Fitted with carpet flooring.

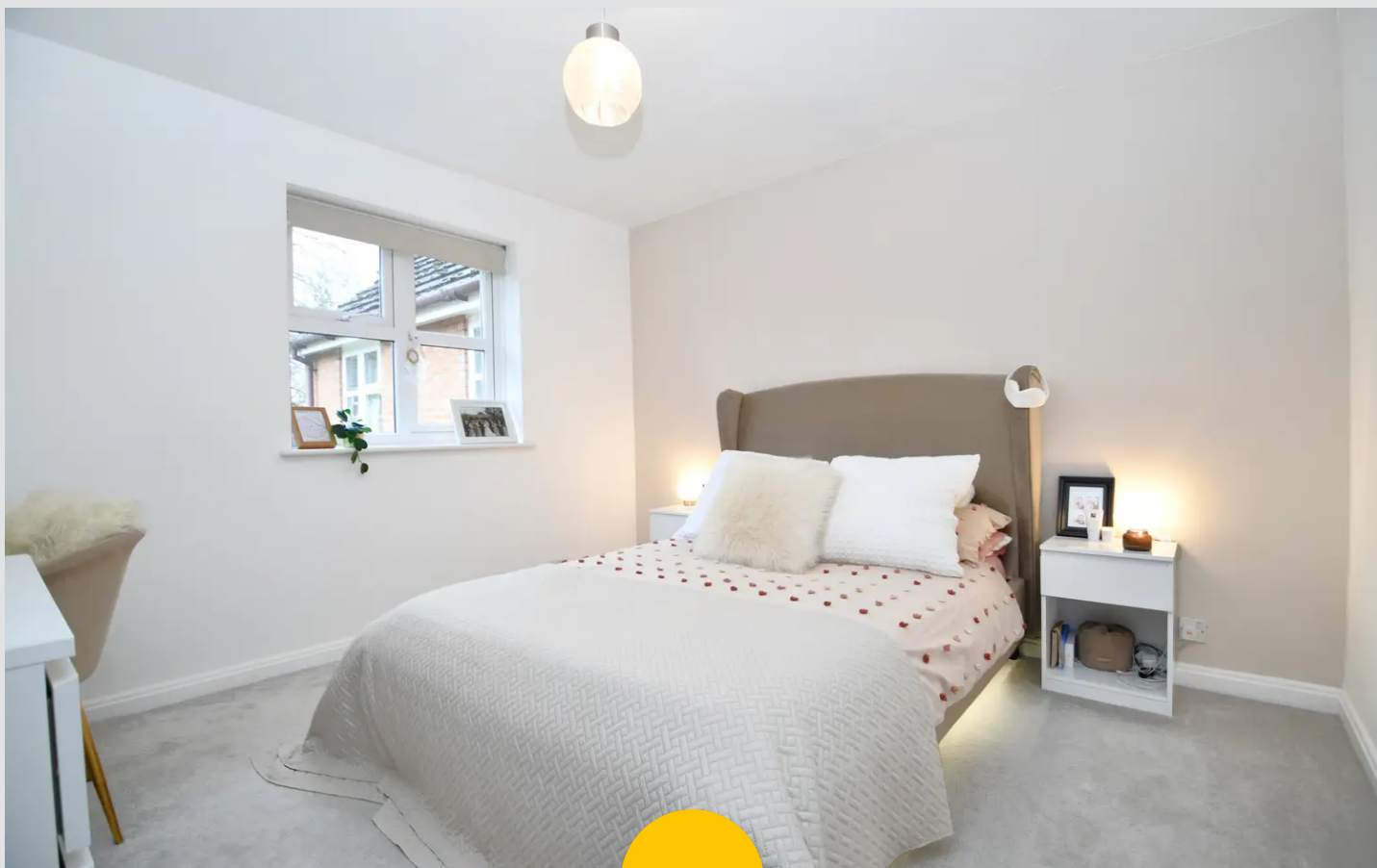
Bedroom Two

10' 2" x 7' 0" (3.09m x 2.14m)

Complete with a ceiling light point, double glazed window and carpet flooring.

External

Complete with communal parking and gardens.







Hills | Salfords Estate Agent

Hills Residential, Sentinel House Albert Street - M30 0SS

0161 707 4900

sales@hills.agency

www.hills.agency/



THE PROPERTY MISDESCRIPTIONS ACT 1991 The Agent has not tested any apparatus, equipment, fixtures and fittings or services and so cannot verify that they are in working order or fit for the purpose. A Buyer is advised to obtain verification from their Solicitor or Surveyor. References to the Tenure of a Property are based on information supplied by the Seller. The Agent has not had sight of the title documents. A Buyer is advised to obtain verification from their Solicitor. You are advised to check the availability of this property before travelling any distance to view. Every effort and precaution has been made to ensure these particulars are correct and not misleading but their accuracy is not guaranteed nor do they form part of any contract. If there is any point which is of particular importance to you, please contact us and we will provide any information you require. This is advisable, particularly if you intend to travel some distance to view the property. The mention of any appliances and services within these details does not imply that they are in full and efficient working order. These particulars are in draft form awaiting Vendors confirmation of their accuracy. These details must therefore be taken as a guide only.