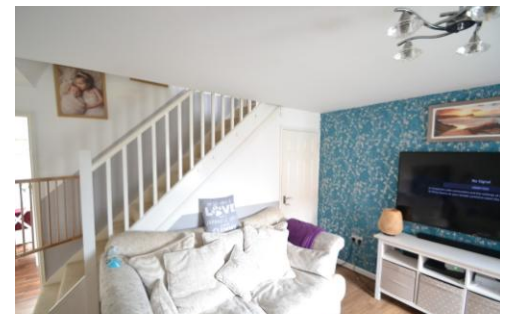




MOVE MAKER

Sales • Lettings • Property Management



35 Oakdale Drive

South Elmsall, Pontefract, , WF9 2FA

Offers In Region Of

£185,000

EPC Rating 81

FREEHOLD COUNCIL TAX BAND C EPC RATING 81/B

A three bedroom detached house situated on the outskirts of South Elmsall with good sized south facing gardens and being within easy walking distance of the local Frickley Country Park. This property would be ideal for the young growing family .Hall, Lounge, Kitchen/Diner, Cloaks/wc, Landing, Three Bedrooms, Bathroom.

