





MQ Estate Agents are delighted to present to the market this fantastic modern apartment in Glasgow Green, just off the City Centre. With beautiful south facing views onto Glasgow Green and it's own private balcony, this second floor flat in the Homes for the Future development offers secure entry, a reception hallway, lounge/dining/kitchen, a double bedroom, bathroom and permit parking. The property further benefits from a lift, gas central heating, double glazing and sliding doors leading onto the balcony. This prestigious development of modern homes was created by world renowned architects and has superb panoramic views over Glasgow Green. The innovative use of styling and materials in the construction of the properties have created a truly breath-taking structure to Glasgow's urban regeneration. Early viewing is highly recommended.

MQ Assisted Move, Part Exchange and 95% mortgages are available.

LOUNGE/KITCHEN/DINING ROOM

18' 11" x 12' 9" (5.77m x 3.89m) The open plan lounge, kitchen and dining space is effortlessly bright and airy with the large patio doors which allow an abundance of natural light into the space. Flooring is laid to a light wooden laminate and walls are painted in a fresh white. There is a variety of possibilities for the layout to the space, all which will result in a fabulous social space with a stunning backdrop.

In the kitchen area there is an integrated gas hob and oven. There is space for an undermount fridge/freezer and washing machine.



BEDROOM

13' 8" x 9' 2" (4.17m x 2.8m) The bedroom overlooks the rear of the property. Flooring is laid to laminate and walls are painted white with a blue feature wall.

BATHROOM

6' 9" x 6' 2" (2.06m x 1.9m) The bathroom comprises of a white, three piece suite of bath with overhead shower, low flush WC and wash hand basin with a large mirror above. The room is complete with spotlight lighting.

LOCATION

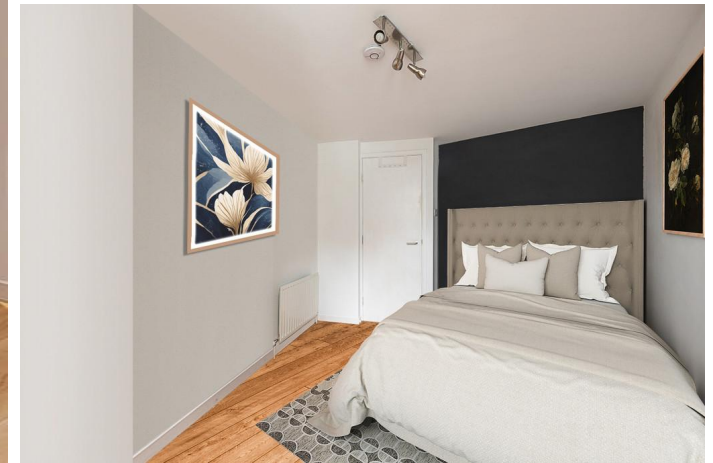
Glasgow Green is a wonderful and expansive open space bordered by the River Clyde, and is the city's oldest park having been established in the 15th century. You will be incredibly well served for fitness and sporting activities with a wealth of clubs and facilities catering for all. Cyclists and runners love the Clyde Walkway, which follows the river all the way to Starthclyde Park. For the more sedate, a pleasant stroll through the Green shows that it is adorned with breath-taking famous Glasgow landmarks like the Peoples Palace and Winter Gardens, the Doulton Fountain, Nelsons Monument and McLennans Arch, which draw tourists from far and wide throughout the year.

VIEWINGS

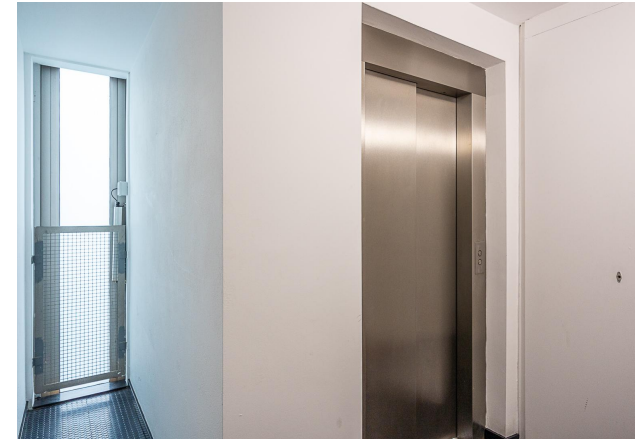
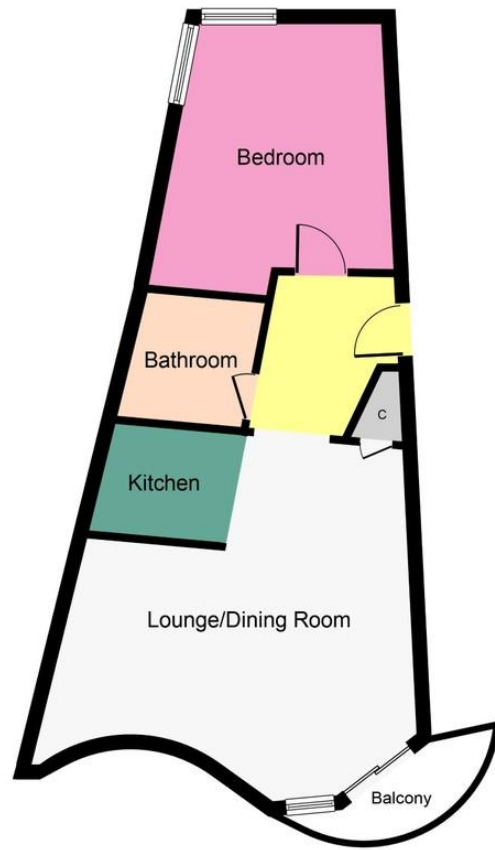
Viewing is by appointment only. Early internal viewing is recommended to appreciate all this beautiful apartment has to offer.

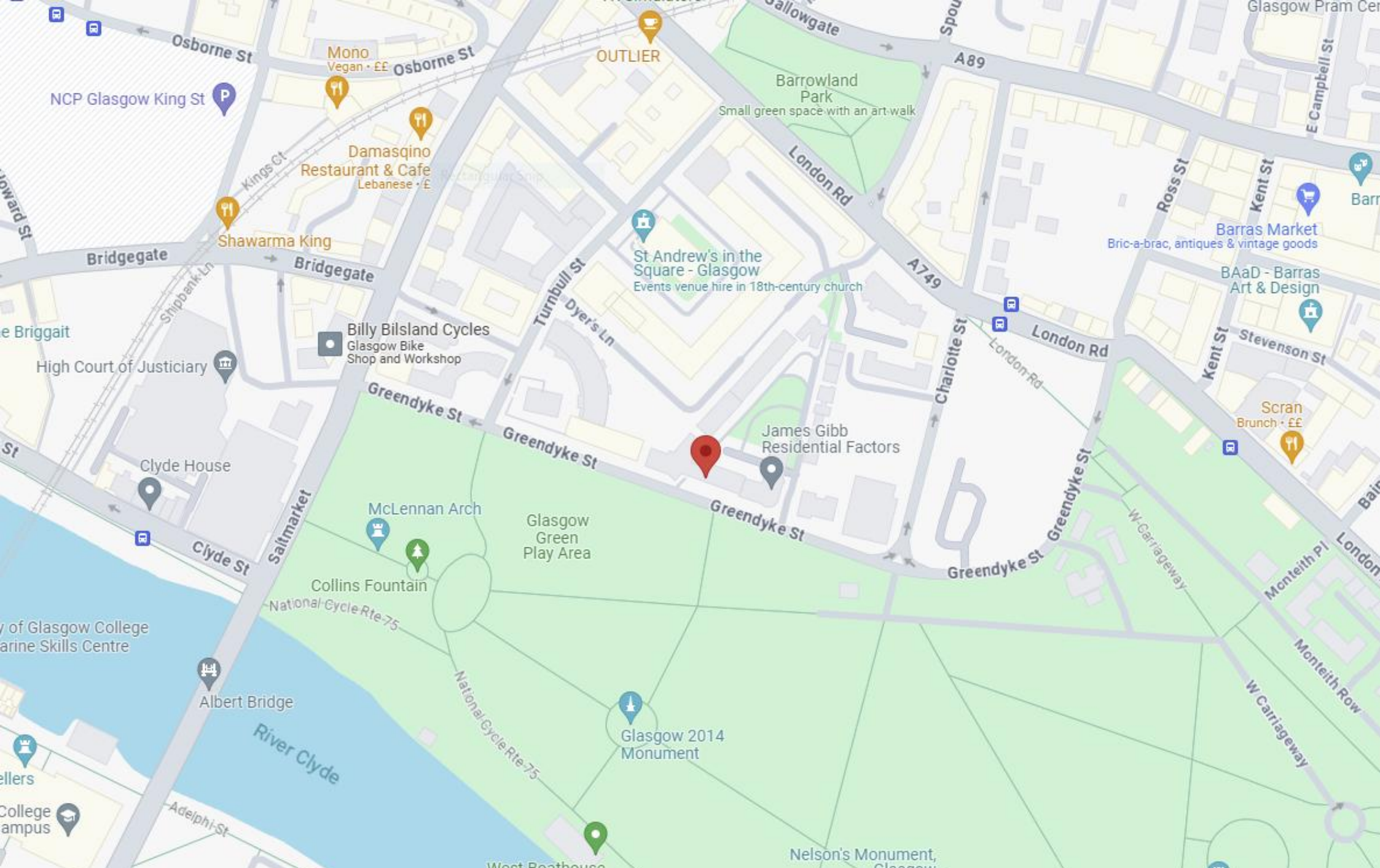
MQ Estate Agents are open 7 days a week: Monday to Friday 8am to 9pm & Saturday & Sunday 8.30am - 9pm to arrange your viewing or valuation appointment.











Call free on 0800 074 8585

www.mqestateagents.co.uk

We are registered with the Office of Fair Trading and the Property Ombudsman. You can be confident that the service is not only regulated but also fully transparent. Whilst every precaution to ensure accuracy has been taken during the preparation of these particulars, if there is any aspect which is critical to your interest or which you find misleading, please contact us for further information. In accordance with the terms of the Property Misdescriptions Act, we wish to clarify all kitchen appliances or indeed and other mechanical items, apparatus or appliances relating to this property, including the central heating system, has not been inspected or tested and therefore MQ Estate Agents Limited do not warrant either now or at a later date their correct functions. Please note photographs taken with a wide angled lens and all measurements are approximate and are taken with a laser tape measure, therefore MQ Estate Agents Limited cannot guarantee true room sizes and will not be held responsible.