



HARRISON
Sales &
Lettings
HARDIE

Varsity Close, Moreton-In-Marsh

Moreton-In-Marsh



On the ground floor you step in to the entrance hall with access to the downstairs cloakroom. The hall then leads through to a light and open plan sitting room with understairs storage, then to the dining area at the end and access to the garden via patio doors. The kitchen opens from the dining area and offers fitted units, integrated appliances including fridge, freezer, electric oven, gas hob and dishwasher. On the first floor there are 3 bedrooms - 2 double and a single, and a family bathroom. The principal bedroom boasts an en-suite shower room and built in wardrobes.

Outside to the rear of the property, there is a south facing landscaped garden with grassed, paved & shingled areas. There is also a side gate with access to the garden.

To the front of the property is a small front garden with further land to the side, and paved parking for two vehicles to the front.

Tenure: We understand the property to be **Freehold**. Potential purchasers should obtain confirmation of this from their solicitor prior to exchange of contracts.

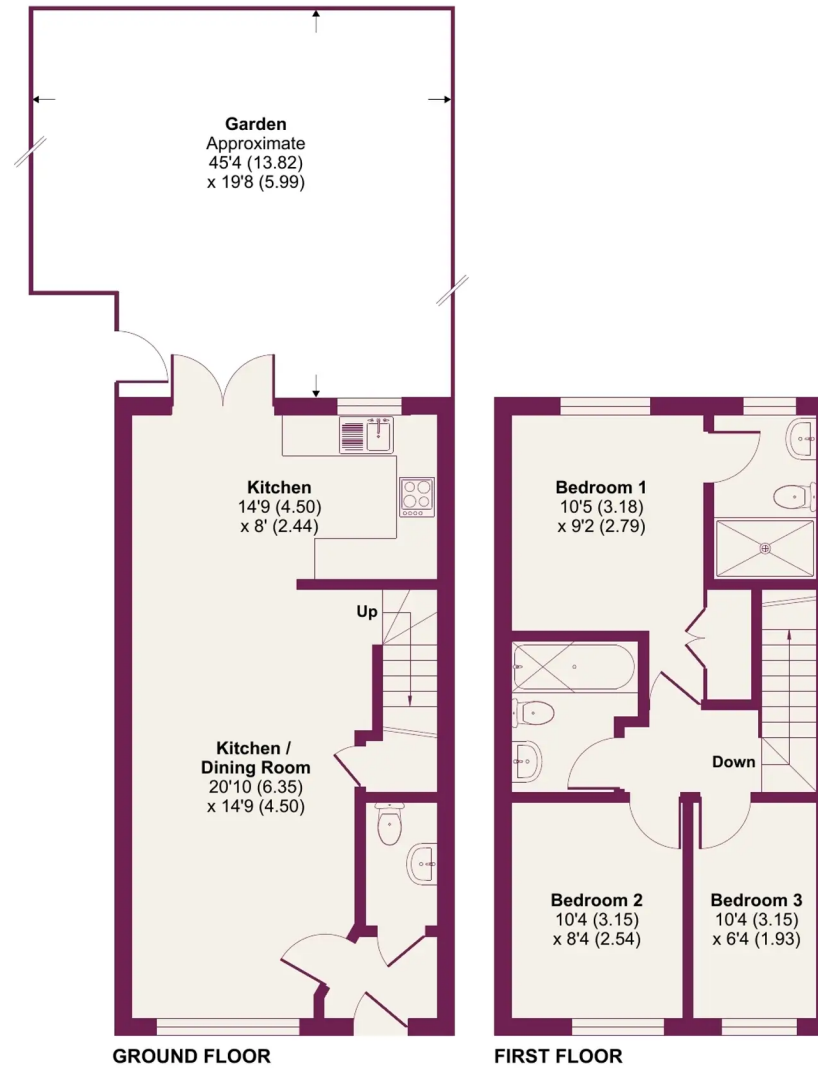
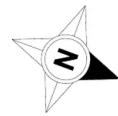




Varsity Close, Moreton-in-Marsh, GL56

Approximate Area = 870 sq ft / 80.8 sq m

For identification only - Not to scale



Floor plan produced in accordance with RICS Property Measurement Standards incorporating International Property Measurement Standards (IPMS2 Residential). © nchecon 2024. Produced for Harrison Hardie. REF: 1090720



Varsity Close, Moreton-In-Marsh

Moreton-In-Marsh