



Flat 5 Copper Beech, La Grande Route de St Jean, St Helier

Asking **£499,000**

BROADLANDS

FINDING YOU A HOME SINCE 1972

5 Copper Beech Court, La Grande Route de St Jean

- Comfortable two bed apartment
- First floor
- Spacious living room
- Separate kitchen
- Good size garden
- Two parking spaces
- Visitor parking
- Loft
- Sole agent
- WhatsApp Don 07829 917172 /
don@broadlandsjersey.com



5 Copper Beech Court, La Grande Route de St Jean

A contemporary two bed apartment located on the first floor of this striking building- renovated throughout in 2021 - close to Sion.

The accommodation comprises entrance hallway, living room, kitchen, two double bedrooms and bathroom. This particular unit comes with one of the best gardens in the development and two designated parking spaces. It is also one of the few units with a loft.

Available with no onward chain call Broadlands now to view.





Living

Large hallway with doors to all rooms. Fifteen foot living room with windows to two sides and lots of space for relaxing and dining. Separate kitchen with integrated appliances including hob, extractor, fridge/freezer and washer / dryer.

Sleeping

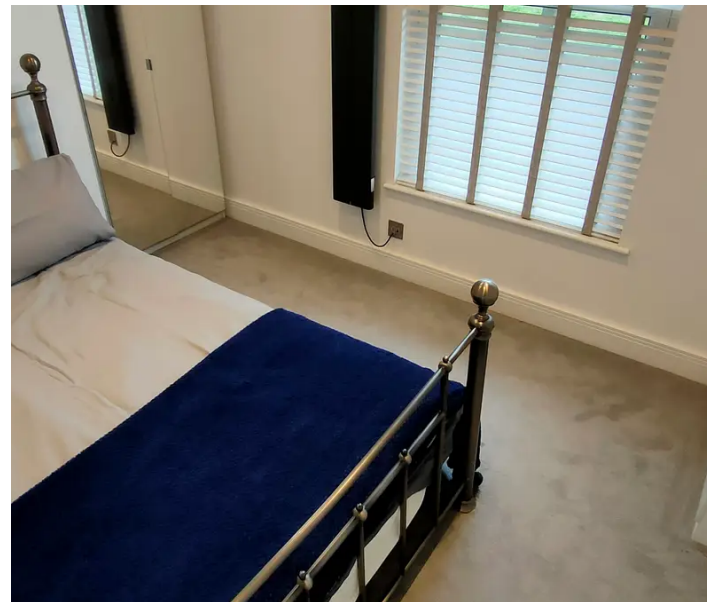
Two double bedrooms both with windows to front. Bathroom with three piece suite comprising bath with shower over, basin and WC.

Outside

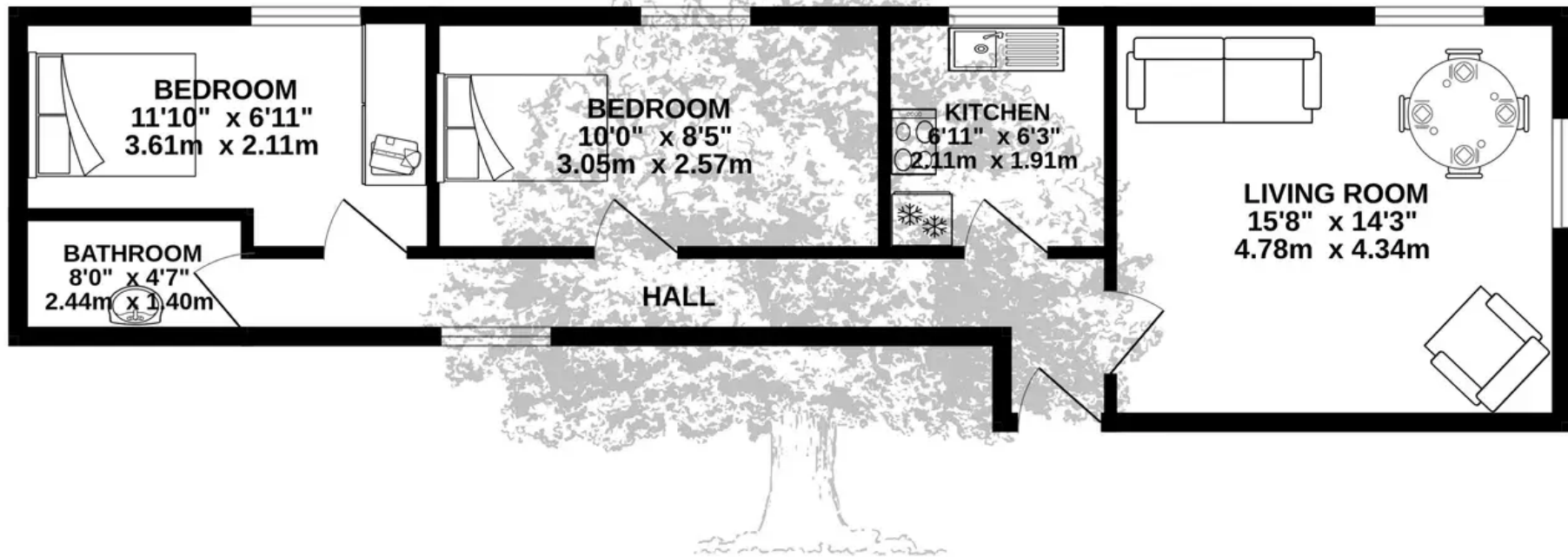
Good size south facing garden with plenty of space for relaxing and dining. Two designated parking spaces. Visitor parking.

Services

All mains excluding gas. Electric heating. Service charge of £121.75 per month covers building insurance, power and lighting in the communal areas and water rates.



FIRST FLOOR
582 sq.ft. (54.1 sq.m.) approx.



TOTAL FLOOR AREA : 582sq.ft. (54.1 sq.m.) approx.

Whilst every attempt has been made to ensure the accuracy of the floorplan contained here, measurements of doors, windows, rooms and any other items are approximate and no responsibility is taken for any error, omission or mis-statement. This plan is for illustrative purposes only and should be used as such by any prospective purchaser. The services, systems and appliances shown have not been tested and no guarantee as to their operability or efficiency can be given.

Made with Metropix ©2024

B
FINDING YOU A HOME
SINCE 1972

COPPER BEECH
COURT

Broadlands

Broadlands Estates, Library Place - JE2 3NL

07829 917172 • don@broadlandsjersey.com • www.broadlandsjersey.com/

BROADLANDS

FINDING YOU A HOME SINCE 1972