



Flat 14, Churchfield Court, Roebuck Close, Bancroft Road.

Reigate

In Excess of **£150,000**



Flat 14

Churchfield Court Roebuck Close Bancroft Road, Reigate

Located in the heart of Reigate Town Centre, this first-floor two-bedroom apartment offers a comfortable and convenient lifestyle for those seeking a peaceful retirement retreat. Situated within a secure building with a lift for easy access, this well-presented residence boasts a modern interior and an array of desirable facilities.

Upon entering the apartment, residents are greeted by a bright and airy living space, including a spacious lounge/diner with a charming Juliet balcony. The modern kitchen is equipped with sleek cabinetry, providing ample storage and workspace for culinary enthusiasts. A conveniently appointed shower room wc completes the living quarters, ensuring both style and functionality.

The property features two generously proportioned double bedrooms, providing comfortable accommodation for residents and guests alike. Each bedroom is thoughtfully designed to maximise space and comfort, with large windows allowing natural light to flood in, creating a warm and inviting atmosphere throughout.

Residents of this exclusive development also benefit from access to a range of communal facilities, including a lounge area ideal for social gatherings, a beautifully landscaped garden for leisurely strolls, and convenient laundry facilities for added convenience. These shared amenities provide opportunities for residents to socialise, relax, and enjoy a sense of community within the comfort of their own home.

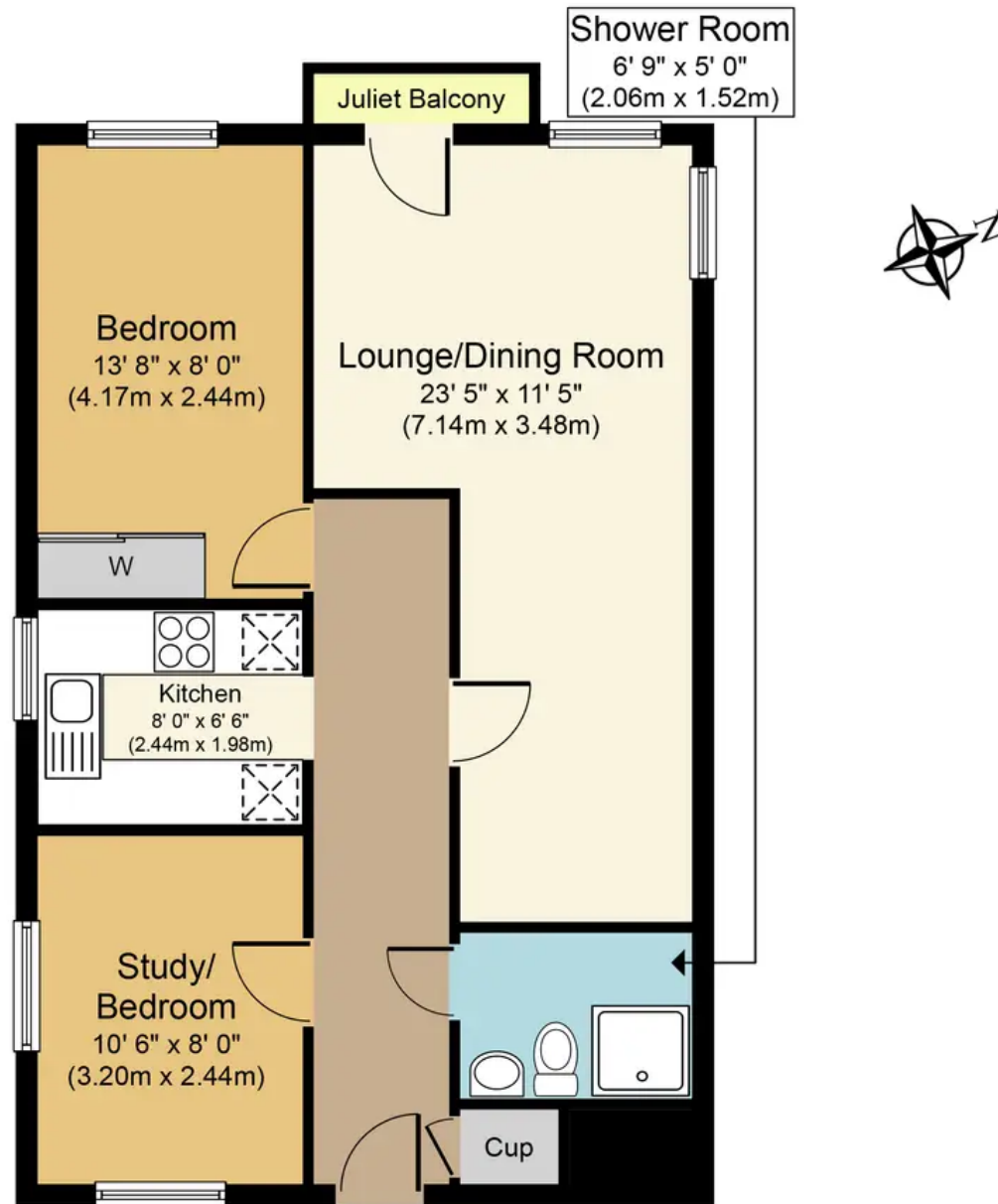
In addition to its prime location within Reigate Town Centre, this property offers easy access to a variety of local amenities, including shops, restaurants and transportation links.

Council Tax band: E Tenure: Leasehold

- Two Double Bedroom Retirement Apartment
- First Floor Apartment With Lift
- Located In Reigate Town Centre
- Modern Kitchen And Shower Room wc







Churchfield Court, RH2

Approx. Gross Internal Floor Area 635. ft. (59 sq. m.)



Whilst every attempt has been made to ensure the accuracy of the floor plan contained here, measurements of doors, windows, rooms and any other items are approximate and no responsibility is taken for any error, omission, or mis-statement. This plan is for illustrative purposes only and should be used as such by any prospective purchaser or tenant. The services, systems and appliances shown have not been tested and no guarantee as to their operability or efficiency can be given.