



ROBSONS
www.robsonsweb.com
FOR SALE
01923.77762

A CHAIN FREE THREE BEDROOM DETACHED HOME WITH SCOPE TO EXTEND (STPP)

Ashvale, Maple Cross, Rickmansworth, Hertfordshire, WD3 9UJ



A CHAIN FREE THREE BEDROOM DETACHED HOME WITH SCOPE TO EXTEND (STPP)

- RECEPTION ROOM/ DINING ROOM
- KITCHEN & GUEST WC
- THREE BEDROOMS
- FAMILY BATHROOM
- REAR & FRONT GARDEN
- DRIVEWAY & GARAGE
- NO ONWARD CHAIN
- SCOPE TO EXTEND (STPP)

Description

Available to the market with no onward chain, this well-proportioned, three-bedroom detached family home with an attractive rear garden, off-street parking and scope to extend (STPP).

The ground floor comprises a hallway with stairs to the first floor, under stairs storage cupboard and a guest cloakroom. The kitchen overlooks the garden and offers a range of fitted units with a freestanding cooker, washing machine and cooker and a door leading to a covered lean to with access to the garage and the garden. Off the kitchen is a very spacious, open plan reception/dining room with patio doors out to the garden.





To the first floor are three well-appointed bedrooms with two benefitting from fitted wardrobes and a family bathroom.

Externally, the family home boasts a good-sized, well-maintained garden, laid to lawn with shrub and flowerbed borders, a patio area to enjoy outside dining and a garden shed. To the front is a driveway, a garage and a small garden.

Location

The property is situated in Maple Cross, close to the village of Harefield which is surrounded by some beautiful countryside along the Grand Union Canal. The local area also has good sporting facilities which include golf, cricket and football clubs. Rickmansworth caters for specialist and daily shopping requirements to include the food halls of Marks & Spencer, Waitrose and Tesco. At Denham is the Chiltern Line to Marylebone whilst at Rickmansworth there is the Chiltern Line and Metropolitan railways to London Marylebone and Baker Street. The M25 motorway is available at junction 17 connecting you to the national motorway network. The area is well served for good quality private and state schools for all ages.

Additional Information

Tenure: Freehold

Local Authority: Three Rivers District Council

Council Tax: Band E

Energy Efficiency Rating: Band E



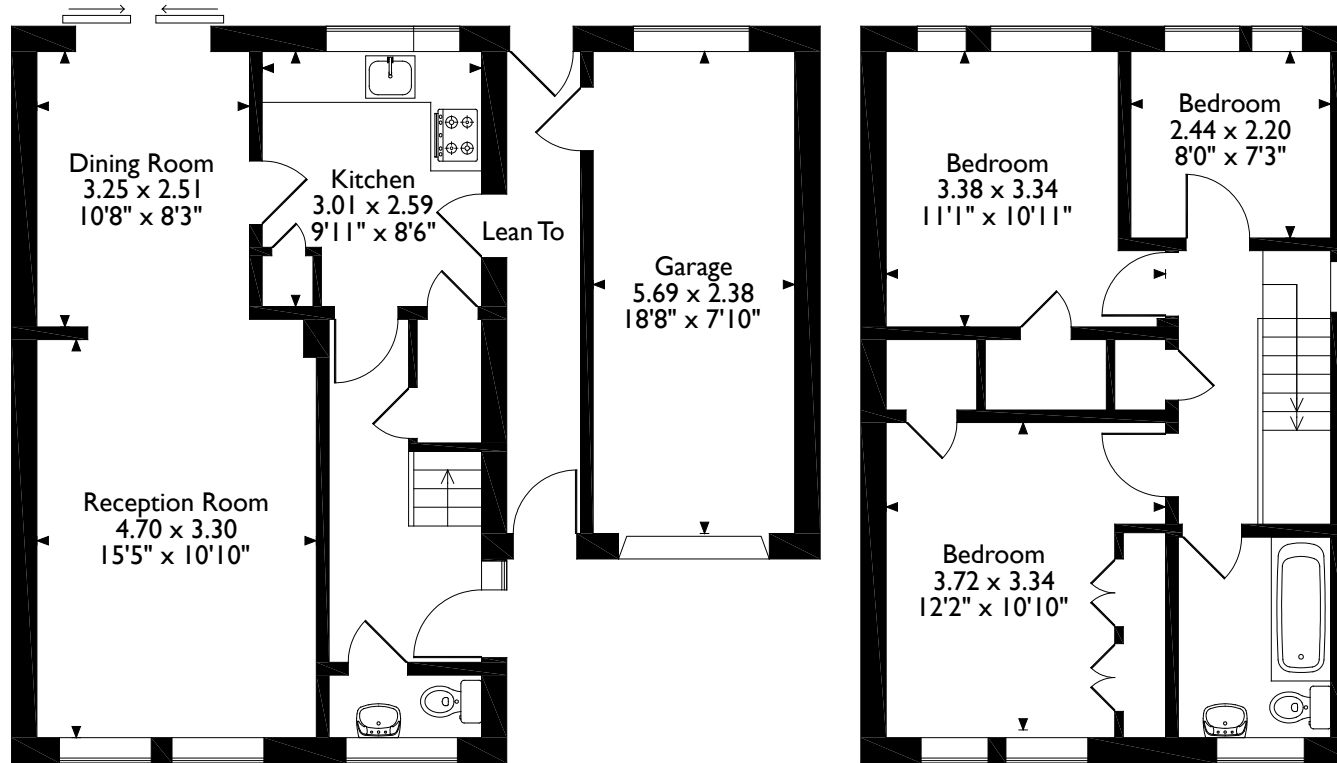
Maple Cross, Rickmansworth, Hertfordshire

Approximate Gross Internal Area

Main House = 86 Sq M/926 Sq Ft

Garage = 14 Sq M/151 Sq Ft

Total = 100 Sq M/1077 Sq Ft



Ground Floor

First Floor

Please note that the location of doors, windows and other items are approximate and this floorplan is to be used for illustrative purposes only. Unauthorized reproduction is prohibited.

ROBSONS

130 High Street, Rickmansworth, Hertfordshire, WD3 1AB

Tel: 01923 777762 rickmansworth@robsonswb.com

www.robsonswb.com

www.londonoffice.co.uk

the
londonoffice.co.uk

40 ST JAMES'S PLACE SW1