



Methley Street, London

Guide Price £785,000

# Methley Street

Daniel Cobb are delighted to present this beautiful three bedroom period property on the popular and charming Methley Street just a short distance from Kennington Underground Station.

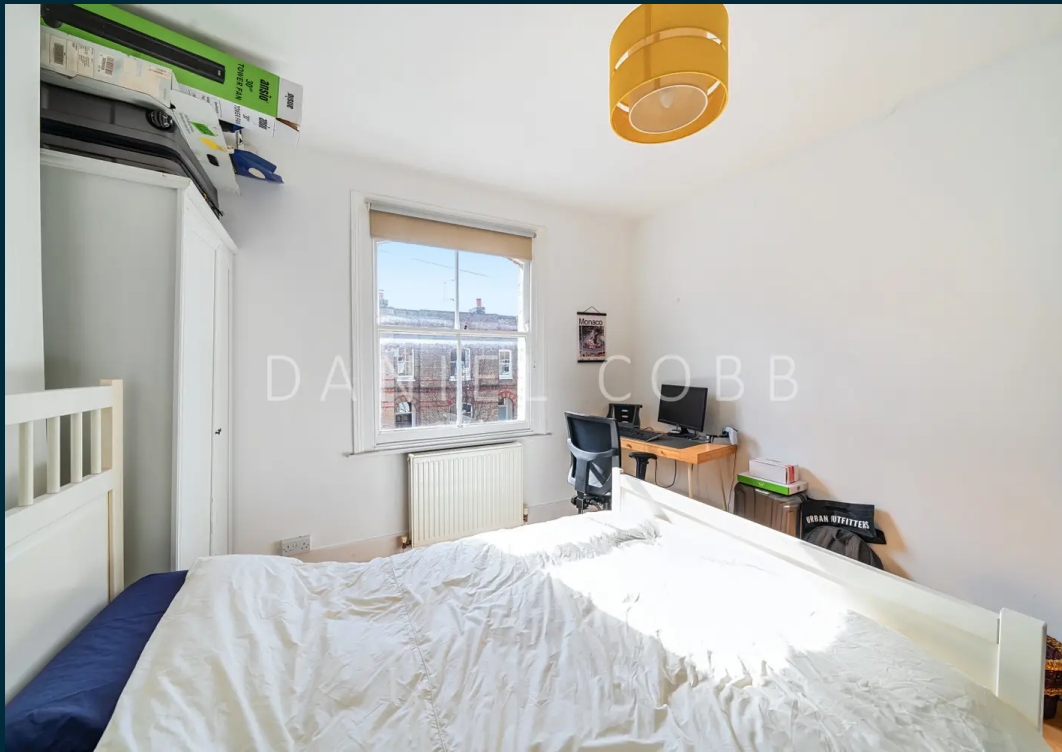
Arranged over two floors in a Victorian terraced building. On the raised ground floor is the kitchen diner and reception room plus a double bedroom. Upstairs on the first floor is the bathroom, two double bedrooms and one ensuite shower room.

Methley Street is close to Kennington Underground station (Northern Line), Elephant & Castle Mainline and Underground stations (Bakerloo and Northern lines, plus overground services to Blackfriars and West Hampstead or to South London and beyond to Kent). Waterloo station and Lambeth North are also within easy reach, plus many local bus services. Together these offer excellent transport links to The City, Westminster, the Southbank, Kensington and Chelsea plus the river. There are also many Santander bike docks nearby.

The lovely green space of Kennington Park with its tennis courts, and the beautiful Cleaver Square, are within a short walking distance. Kennington Cross is also very close by, providing a selection of shops, restaurants, bars and independent cafes. There is a wonderful farmers market every Saturday at St Marks Church opposite Oval Underground station.

Tenure: Leasehold



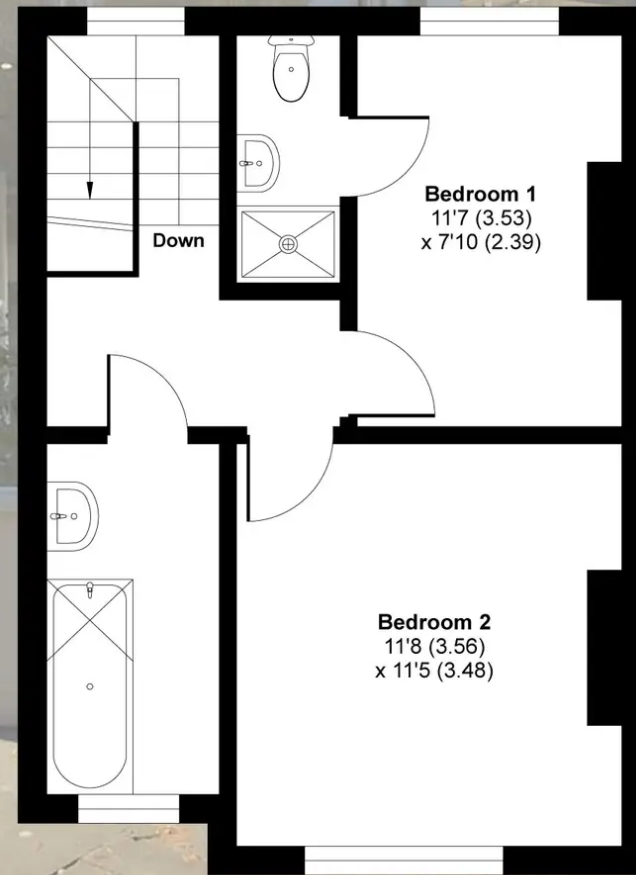


# Methley Street, London, SE11

Approximate Area = 871 sq ft / 80.9 sq m

For identification only - Not to scale

## DANIEL COBB



**GROUND FLOOR**

**FIRST FLOOR**



Floor plan produced in accordance with RICS Property Measurement Standards incorporating International Property Measurement Standards (IPMS2 Residential). © nichecom 2024. Produced for Daniel Cobb. REF: 1101191