



£750,000 - LEASEHOLD

HORSLEY COURT, MONTAIGNE CLOSE, WESTMINSTER, SW1P



LEASEHOLD
2 BEDROOMS 2 BATHROOMS 1 RECEPTION ROOM



Luxury Two Bedroom Two Bathroom Apartment with Secure Parking in Prestigious Development

This luxury two bedroom, two bathroom apartment is located in a prestigious development. It features an open-plan kitchen and a stunning reception room that leads to a spacious patio. The master bedroom has an en suite bathroom. The apartment also comes with secure underground parking.

Additionally, the development offers a gym and a spa jacuzzi complex, allowing residents to maintain an active and relaxing lifestyle. The presence of a 24-hour porter ensures security and assistance at any time of the day.

Situated just minutes away from Pimlico tube station, the development provides easy access to public transportation, making it convenient to explore the surrounding areas. The amenities of Westminster and Pimlico are also in close proximity, offering a wide range of services, entertainment options, and shopping opportunities.

Overall, this luxury apartment provides a comfortable and luxurious living environment, complemented by its convenient location and desirable amenities.





PROPERTY

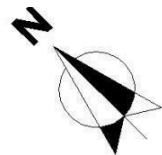
HORSLEY COURT, MONTAIGNE CLOSE,
WESTMINSTER, LONDON, SW1P

At a glance:

- Luxury two bedroom, two bathroom apartment
- Open-plan kitchen
- Spacious patio
- Secure underground parking
- Gym, spa and jacuzzi
- 24-hour porter
- Long lease

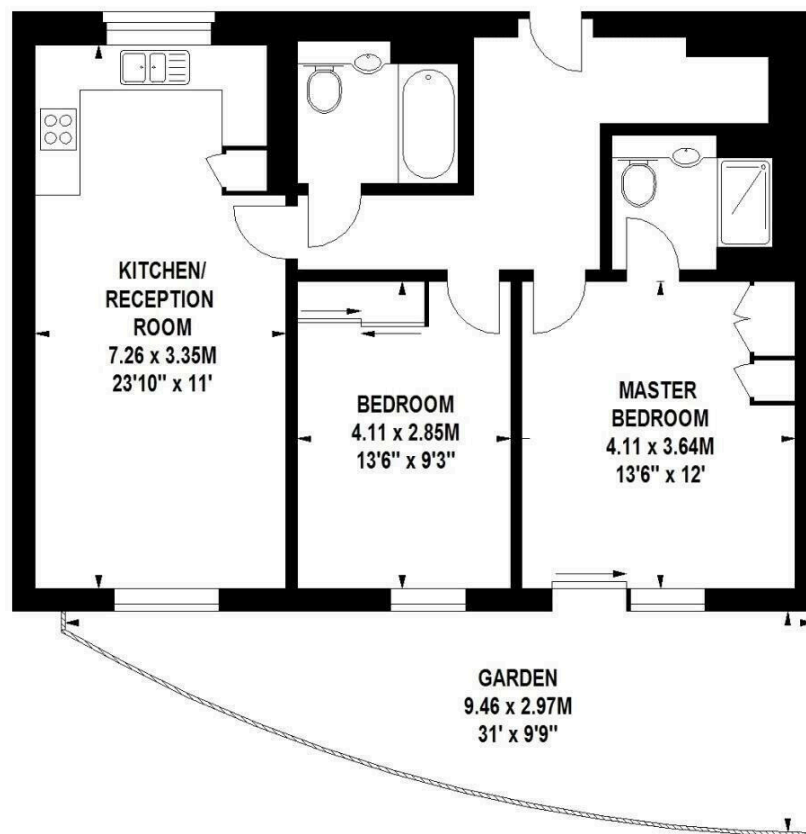
Other information:

- Leasehold - 979 years
- Service charge: £6500 per annum
- Ground rent: £450 per annum



Approximate gross internal area

73 sq m / 786 sq ft



Ground Floor