

Summary

This beautiful home is situated on the much loved Westward Deals in the popular village of Kedington, renowned for the primary school & range of amenities. This modern & stylish home is ideal for families, with three spacious bedrooms & an impressive kitchen/diner. There is also a garage en bloc.

Description

THE PROPERTY Welcome to this wonderful family home located in the highly sought-after village of Kedington. Situated in the heart of the development and fronting onto a green, this property offers a picturesque setting ideal for family living.

Greeted by gated access, the front garden welcomes you with a pathway leading to the side entrance. Step inside the entrance hall, where you'll immediately appreciate the spaciousness and functionality of the ground floor layout. A large under stair storage cupboard provides ample storage space, while stairs lead to the first floor.

The lounge is an inviting space, boasting an impressive window overlooking the green to the front. Additionally, a designated corner offers the perfect spot for a home office or study area. The kitchen is a striking feature of the home, showcasing sleek and stylish units fully integrated with essential appliances including a fridge/freezer, oven, washing machine, and dishwasher. With ample room for a dining table and chairs, this space is perfect for family meals and entertaining. French doors lead from the kitchen to the rear garden, enhancing the seamless indoor-outdoor flow.

Upstairs, the impressive master bedroom awaits, offering a spacious retreat complete with built-in storage solutions. Two further generously sized bedrooms and a stylish family bathroom complete the first floor accommodation.

The rear garden is designed for low maintenance, allowing you to enjoy outdoor living without the hassle of extensive upkeep. Additionally, a timber-built workshop provides additional storage or workspace. Gated access to the rear leads to a garage en bloc, offering secure parking and additional storage options.

Don't miss out on the opportunity to make this delightful property your family's forever home. Contact us today to arrange a viewing!

HALLWAY

KITCHEN/DINER 18' 2" x 9' 10" (5.54m x 3.0m)

LOUNGE 18' 2" x 11' 5" (5.54m x 3.48m)

LANDING

BEDROOM ONE 18' 2" x 11' 5" (5.54m x 3.48m)

BEDROOM TWO 9' 10" x 9' 6" (3.02m x 2.92m)

BEDROOM THREE 9' 10" x 8' 2" (3.0m x 2.49m)

BATHROOM

GARAGE EN BLOC

Additional Information

Local Authority – West Suffolk Council

Council Tax Band – C

Tenure – Freehold

Services – All mains services

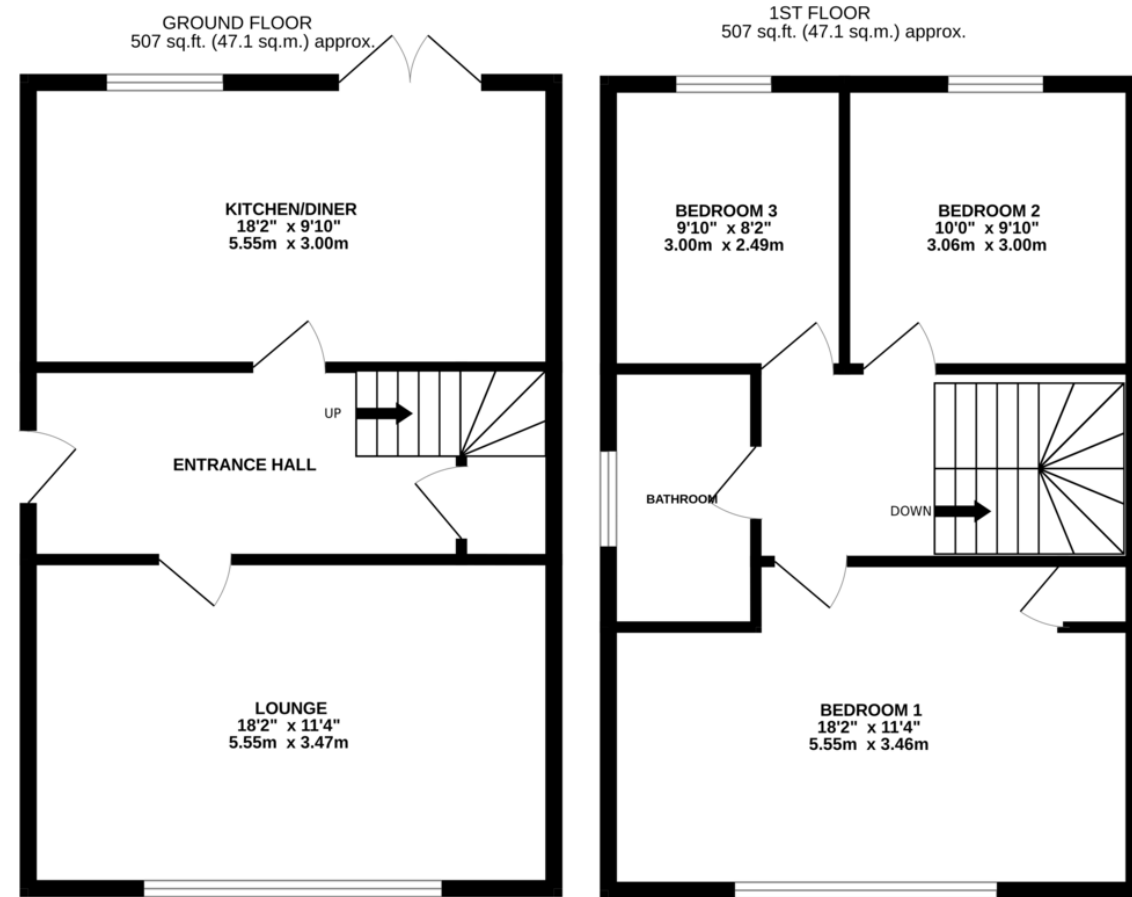
Post Code – CB9 7PW

Viewings by appointment

Bychoice Estate Agents

Tel: 01440 768919





TOTAL FLOOR AREA : 1015 sq.ft. (94.3 sq.m.) approx.

Whilst every attempt has been made to ensure the accuracy of the floorplan contained here, measurements of doors, windows, rooms and any other items are approximate and no responsibility is taken for any error, omission or mis-statement. This plan is for illustrative purposes only and should be used as such by any prospective purchaser. The services, systems and appliances shown have not been tested and no guarantee as to their operability or efficiency can be given.

Made with Metropix ©2024



If you would like to speak to one of our mortgage advisors call now – 01440 768919



Your home may be repossessed if you do not keep up repayments on your mortgage.

EPC to follow

Contact Details

27b High Street, Haverhill, Suffolk, CB9 8AD

Tel: 01440 768919

Email: haverhill@bychoice.co.uk

Agents Note: Whilst every care has been taken to prepare these sales particulars, they are for guidance purposes only. All measurements are approximate and for general guidance purposes only and whilst every care has been taken to ensure their accuracy, they should not be relied upon and potential buyers are advised to recheck the measurements

Westward Deals | Kedington | CB9 7PW

This beautiful home is situated on the much loved Westward Deals in the popular village of Kedington, renowned for the primary school & range of amenities. This modern & stylish home is ideal for families, with three spacious bedrooms & an impressive kitchen/diner. There is also a garage en bloc.

£289,995

- THREE SPACIOUS BEDROOMS
- POPULAR VILLAGE LOCATION
- CLOSE TO PRIMARY SCHOOL
- RANGE OF VILLAGE AMENITIES
- GARAGE EN BLOC
- STYLISH BATHROOM
- BEAUTIFUL KITCHEN/DINER