

Paul Bott & Co



- Three Bedroom Home
- End of Terrace
- Freehold
- close to shops

32 Whitehawk Way, Brighton, BN2 5LW

Fixed Price £420,000

This beautifully finished 3-bedroom end-of-terrace home in East Brighton is perfectly situated for convenient parking and excellent transport links, providing easy access to the city centre. Ready to move into, this home is ideal for those looking to step onto the property ladder.



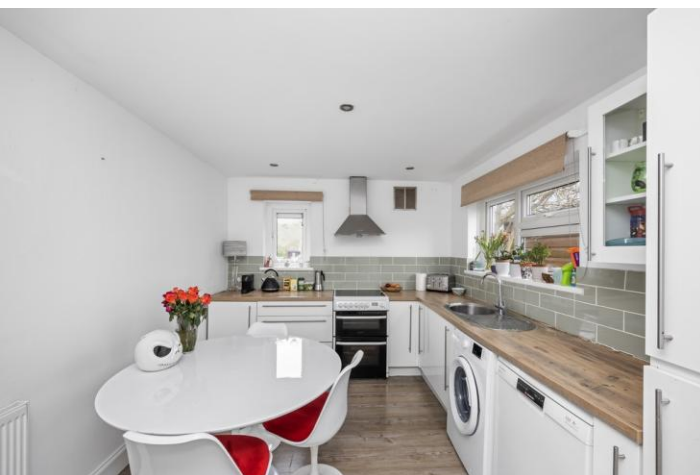
Property Description

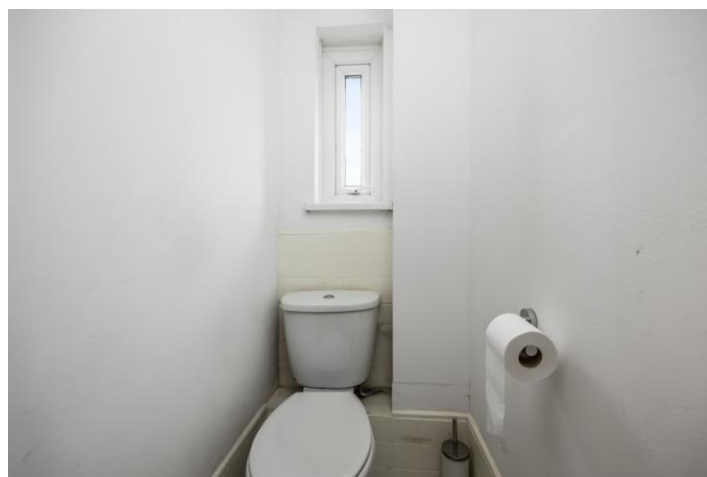
Upon entering the home, you are welcomed by a spacious living/reception room featuring a large south-west facing window that fills the space with natural light. The room boasts a neutral décor, dark laminate flooring, and gas central heating. Moving up the steps, you enter the generous kitchen-dining room, complete with ample storage space for a washing machine, fridge freezer, oven, and dishwasher. The kitchen showcases white gloss cupboards and wood-effect countertops, creating a beautifully designed area for all your culinary needs, along with space for a dining table.

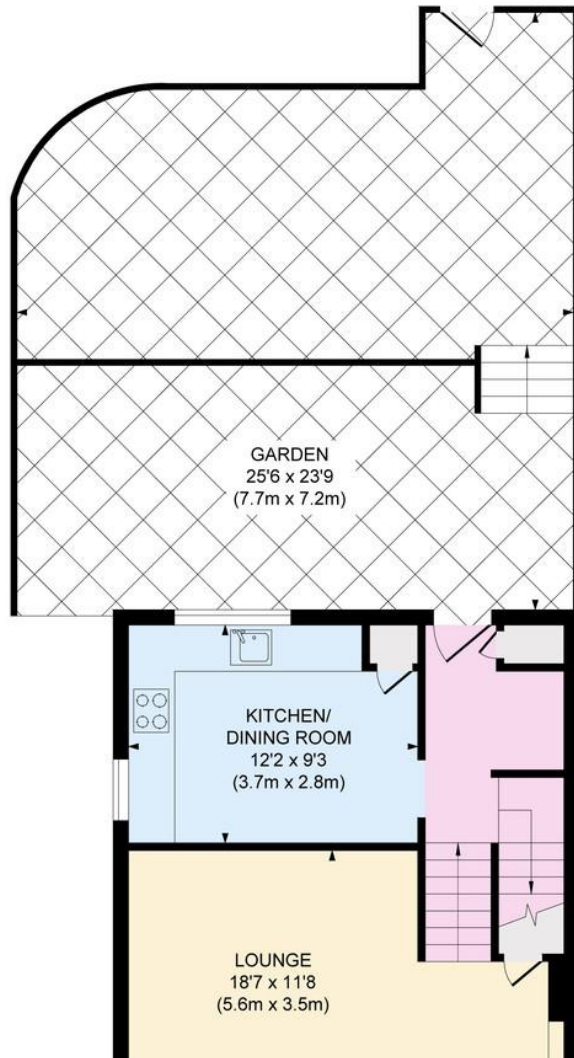
Stepping out into the garden, you'll find a sizable outdoor area with wooden decking and a dual-aspect layout that ensures plenty of natural light throughout the day. The rear access is perfect for hosting summer activities. The first room upstairs features a neutral décor, dark laminate flooring, a gas radiator, and a south-west facing window, suitable for a home office, guest room, or children's room.

Continuing down the hallway, which is lined with dark laminate flooring, there is a large storage cupboard situated near the bathroom, a separate toilet, and the final two bedrooms. The bathroom exudes a warm ambiance with full tiling, a full-sized bath with a shower above, and a spacious sink basin.

Moving to the second bedroom, you will find dark laminate flooring, built-in storage or wardrobe, and ample space for a double bed. Finally, the primary bedroom offers built-in storage behind the door, large south-west-facing windows that flood the room with natural light, and plenty of space for all your bedroom furnishings.

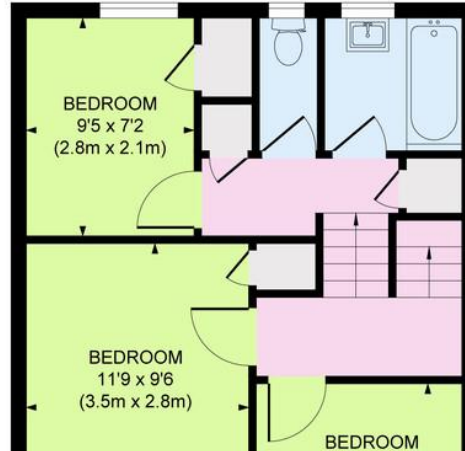






Approximate Gross Internal Area
810 sq ft / 75.2 sq m

%epcGraph_c_1_334%



29 Upper St James Street,
Brighton, East Sussex, BN2 1JN

www.paulbottandcompany.co.uk
01273 605530
info@paulbottandcompany.co.uk

Agents Note: Whilst every care has been taken to prepare these sales particulars, they are for guidance purposes only. All measurements are approximate and for general guidance purposes only and whilst every care has been taken to ensure their accuracy, they should not be relied upon and potential buyers are advised to recheck the measurements