

Pool Lane
Stafford, ST17 0TY

John German






Pool Lane

Stafford, ST17 0TY

£795,000



An individually designed and built five bedroom detached house occupying a privately gated 0.25 acre plot in this sought after Staffordshire village on the very edge of Cannock Chase.

Built in the late 1990's on the grounds of an original dairy, this highly characterful home was bespoke designed for the current vendors and offers generously sized living and bedroom accommodation that incorporates traditional style and character features throughout. It is further complimented by wrap around gardens of 0.25 acres that offer privacy and maturity.

Stafford town centre and railway station with London Euston services is within approximately 4 miles and the M6 junction 13 is within 3 ½ miles or so. There are endless local walks and outdoor pursuits all closely available including canal side walks and the extensive grounds of Shugborough Hall National Trust Estate.

An open canopied porch gives access to the front main entrance door and impressively spacious reception hall, beyond which is a central point of access to all ground floor rooms and has a feature timbered floor and a hand crafted stair and balustrading that leads to an equally generous first floor galleried landing that again gives central access to all bedrooms. Also leading off the hall is a two piece fitted guest cloakroom.

The principal reception room is a splendid through lounge with focal point fireplace and log burner stove, timber finished floor and double doors that lead to a rear terrace and garden.

Adjacent to the lounge and breakfast kitchen is a separate dining room of good size that enjoys very pleasant rear garden views and also has a timber finished floor and double doors to the hall.

With views of the front garden, the sitting room is a further well proportioned reception room with a bay window, timber finished floor, minister style fireplace and bespoke fire side bookcases.

Positioned next to the sitting room is a good sized family room which enjoys a side garden aspect.

The heart of this home is undoubtedly the spacious and rear garden facing breakfast kitchen which has a full range of hand crafted oak units including base, wall, drawer and a feature larder unit. There are granite worktops, splashback tiling, Belfast sink, slate tiled floor, range cooker, integrated dishwasher, American style fridge freezer, access to the rear garden terrace and attractive garden views. Leading off the breakfast kitchen is a utility room with a matching range of units, slate tiled floor, sink unit, appliances spaces for a washing machine and tumble dryer.

The galleried first floor landing is split level in part and has a front facing built in window seat. It gives access to the five double bedrooms and family bathroom.

The master bedroom suite is elegant and spacious with a split level to distinguish between two areas, a Juliet balcony and double doors, vaulted ceiling in part with four skylights, dressing area with a fitted range of wardrobes, and ample room for additional furniture items. Leading off is a three piece fitted en suite with quadrant corner shower, low level WC and wash hand basin.

Bedroom two is an ideal guest bedroom enjoying a front facing aspect and having its own two piece en suite cloakroom.

Bedrooms three and four are excellent sized rear facing rooms with garden views and bedroom five is a further front facing bedroom of double size.

The family bathroom is conveniently accessible to all rooms and is fitted with a traditional white and chrome suite to comprise a framed double ended bath with side mounted mixer tap and handheld shower, substantial walk in showering cabinet with two shower heads, pedestal wash hand basin and a feature high level cistern WC.

Outside, the overall plot size is 0.25 acres or thereabouts and offers fully enclosed front, side and rear garden areas with electric gates to the front leading to a gravelled drive and turning area.

The principal areas are mainly lawned with a variety of established shrubs trees and evergreen planting, hedged boundaries, a wide block paved patio to the rear. A timber garden shed is included in the sale and views of Cannock Chase are also to be enjoyed from the garden.

Tenure: Freehold (purchasers are advised to satisfy themselves as to the tenure via their legal representative).

Property construction: Brick

Parking: Drive

Electricity supply: Mains

Water supply: Mains

Sewerage: Mains

Heating: Gas

(Purchasers are advised to satisfy themselves as to their suitability).

Broadband type: TBC - See Ofcom link for speed: <https://checker.ofcom.org.uk/>

Mobile signal/coverage: See Ofcom link <https://checker.ofcom.org.uk/>

Local Authority/Tax Band: Stafford Borough Council / Tax Band G

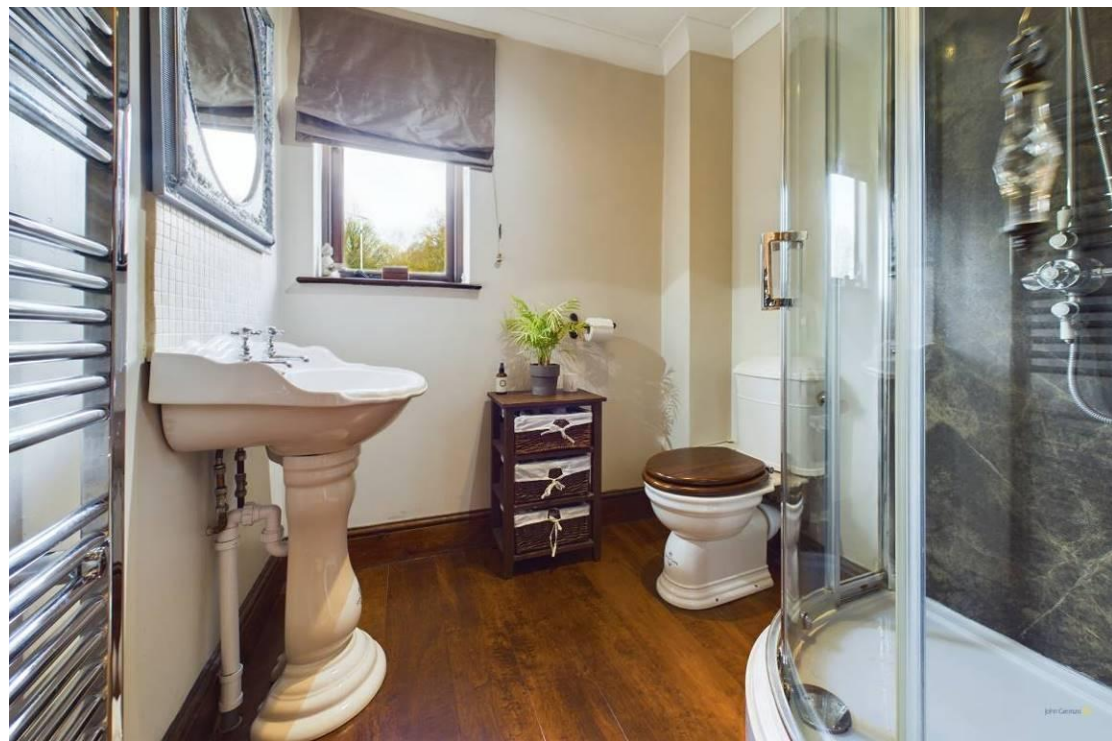
Useful Websites: www.gov.uk/government/organisations/environment-agency
www.staffordbc.gov.uk

Our Ref: JGA/15032024

The property information provided by John German Estate Agents Ltd is based on enquiries made of the vendor and from information available in the public domain. If there is any point on which you require further clarification, please contact the office and we will be pleased to check the information for you, particularly if contemplating travelling some distance to view the property. Please note if your enquiry is of a legal or structural nature, we advise you to seek advice from a qualified professional in their relevant field.













Ground Floor



Floor 1

Approximate total area⁽¹⁾
 2586.39 ft²
 240.28 m²

(1) Excluding balconies and terraces

While every attempt has been made to ensure accuracy, all measurements are approximate, not to scale. This floor plan is for illustrative purposes only.

GIRAFFE360



Agents' Notes

These particulars do not constitute an offer or a contract neither do they form part of an offer or contract. The vendor does not make or give and Messrs. John German nor any person employed has any authority to make or give any representation or warranty, written or oral, in relation to this property. Whilst we endeavour to make our sales details accurate and reliable, if there is any point which is of particular importance to you, please contact the office and we will be pleased to check the information for you, particularly if contemplating travelling some distance to view the property. None of the services or appliances to the property have been tested and any prospective purchasers should satisfy themselves as to their adequacy prior to committing themselves to purchase.

Referral Fees

Mortgage Services - We routinely refer all clients to APR Money Limited. It is your decision whether you choose to deal with APR Money Limited. In making that decision, you should know that we receive on average £60 per referral from APR Money Limited.

Conveyancing Services - If we refer clients to recommended conveyancers, it is your decision whether you choose to deal with this conveyancer. In making that decision, you should know that we receive on average £150 per referral.

Survey Services - If we refer clients to recommended surveyors, it is your decision whether you choose to deal with this surveyor. In making that decision, you should know that we receive up to £90 per referral.

Score	Energy rating	Current	Potential
92+	A		
81-91	B		
69-80	C	72 C	77 C
55-68	D		
39-54	E		
21-38	F		
1-20	G		



John German

5 Pool Lane, Brocton, Stafford, Staffordshire, ST17 0TR

01785 236600

stafford@johngerman.co.uk

Ashbourne | Ashby de la Zouch | Barton under Needwood
Burton upon Trent | Derby | East Leake | Lichfield
Loughborough | Stafford | Uttoxeter

JohnGerman.co.uk Sales and Lettings Agent



