

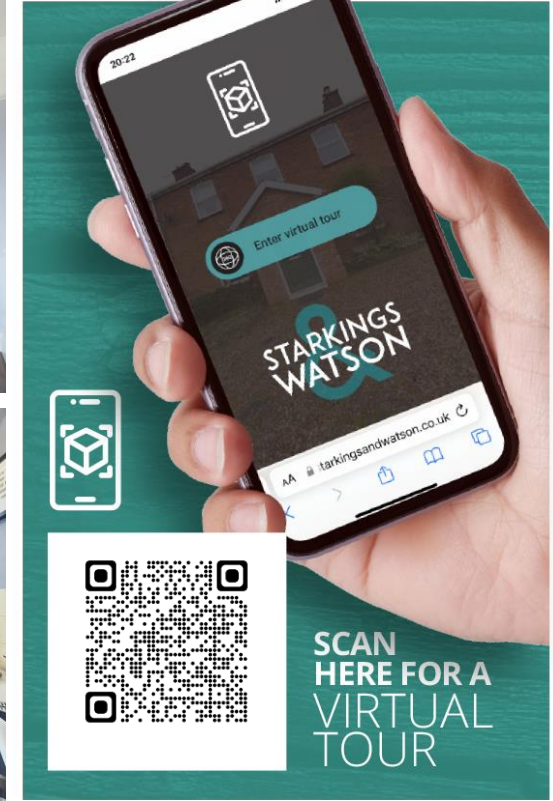
WEMBLEY AVENUE

Beccles NR34 9YS

Freehold | Energy Efficiency Rating : D

To arrange an accompanied viewing please pop in or call us on 01986 490590

FOR SALE
PROPERTY



arla | propertymark

PROTECTED

naea | propertymark

PROTECTED



For our full list of available properties, or for a FREE INSTANT online valuation visit

starkingsandwatson.co.uk



**STARKINGS
&
WATSON**

- No Chain!
- Semi-Detached Home
- Sitting Room With Woodburner
- Open Plan Kitchen/Diner
- Two Ample Bedrooms & Family Bathroom
- Quiet Cul-De-Sac Location
- Generous & Well Kept Rear Gardens
- Timber Built Summer House/Office

IN SUMMARY

Located on a SMALL and QUIET CUL-DE-SAC within the SOUGHT AFTER TOWN of BECCLES you will find this SEMI-DETACHED home offered in EXCELLENT order having been updated by the current owners. The property externally offers a WONDERFUL rear garden kept in great order offering a SUNNY aspect and plenty of space to be enjoyed. There is also a timber built OFFICE/SUMMER HOUSE with power and Wi-Fi. Inside the well presented accommodation offers a hall entrance, sitting room with WOODBURNER. To the rear there is a lovely open plan KITCHEN/DINER with a contemporary kitchen with solid worktops and an Aga. Heading up to the first floor landing there is a family bathroom with Jacuzzi bath as well as TWO DOUBLE BEDROOMS. The property would be ideal for first time buyers and offers GAS fired central heating and uPVC double glazing.

SETTING THE SCENE

Approached from the cul-de-sac you will find shingled frontage with side gate leading to the rear garden.

There is a pathway leading to the partially covered front door.

THE GRAND TOUR

Entering via the main entrance to the front into an entrance hallway with stairs to the first floor landing. There is a door to the left leading to the sitting room which overlooks the frontage with a feature fireplace housing a woodburner with slate hearth. Beyond the sitting room there is an open plan kitchen/dining room with wood effect flooring and a door to the rear garden and with plenty of space for the dining table. The modern contemporary kitchen having been recently re-fitted offers solid worktops with plenty of cupboard storage as well as feature gas fired Aga, integrated dishwasher, space for fridge/freezer and further white goods. Heading up to the first floor landing you will find loft hatch access. The family bathroom has been re-fitted with jacuzzi shaped bath with shower over and airing cupboard. To the rear of the house is a double bedroom with fitted cupboard and to the front, there is a main double bedroom also with fitted wardrobes. Externally on the ground floor accessed from the side passage there is a utility space with room and plumbing for the washing machine.

THE GREAT OUTDOORS

Accessed via the doors in the kitchen/dining room or the side passage, you will find generous establish rear garden with hard standing seating area, large lawn with feature circular seating area, flower and shrub borders with mature planting, garden pond, two timber sheds, Timber fencing and the external timber



To arrange an accompanied viewing please call our Bungay Office on **01986 490590**



built garden studio/office. The office has power and light and some insulation as well as Wi-Fi connection making an ideal external space for working or as a garden room.

OUT & ABOUT

Located in the Town Centre of Beccles, the property enjoys a residential position within walking distance to local amenities. The busy market town offers many shops, restaurants, schools, pubs and supermarkets. A market selling fresh produce is held every Friday in the town, where there is a local bus station which runs a regular service to Lowestoft, Norwich and many of the smaller villages close by.

FIND US

Postcode : NR34 9YS

What3Words : ///brightens.forklift.pesky

VIRTUAL TOUR

View our virtual tour for a full 360 degree of the interior of the property.

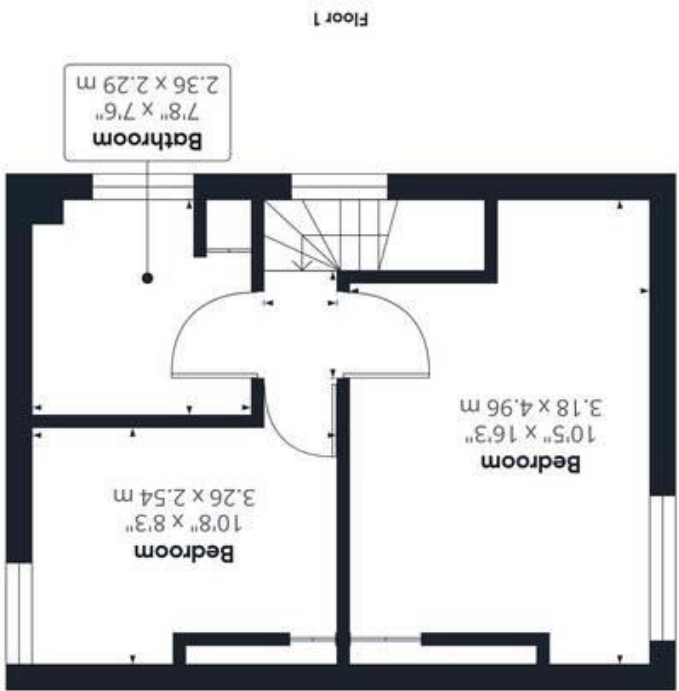
Disclaimer: Whilst every care has been taken to prepare these sales particulars, they are for guidance purposes only. All measurements are approximate are for general guidance purposes only and whilst every care has been taken to ensure their accuracy, they should not be relied upon and potential buyers are advised to recheck the measurements.

Price:



For our full list of available properties, or for a FREE INSTANT online valuation visit

starkingsandwatson.co.uk



GIRAFFE 360

While every attempt has been made to ensure accuracy, all measurements are approximate, not to scale. This floor plan is for illustrative purposes only.

(1) Excluding balconies and terraces

Approximate total area^m

673.99 ft²
62.62 m²

