



The Gables Lands Lane, Knaresborough

Knaresborough

Guide Price £1,000,000



MYRINGS

Harrogate's Family Estate Agent



The Gables Lands Lane

Knaresborough, Knaresborough

HIGHLY PRESTIGIOUS ADDRESS - 4 DOUBLE BEDROOMS 2 BATHROOMS - FLEXIBLE LIVING SPACE - DRIVEWAY PARKING FOR MULTIPLE VEHICLES - DOUBLE GARAGE - HIGHLY PRIVATE REAR GARDEN - CLOSE TO COUNTRYSIDE WALKS - CLOSE TO SCHOOLS - CLOSE TO TOWN CENTRE
Council Tax band: G

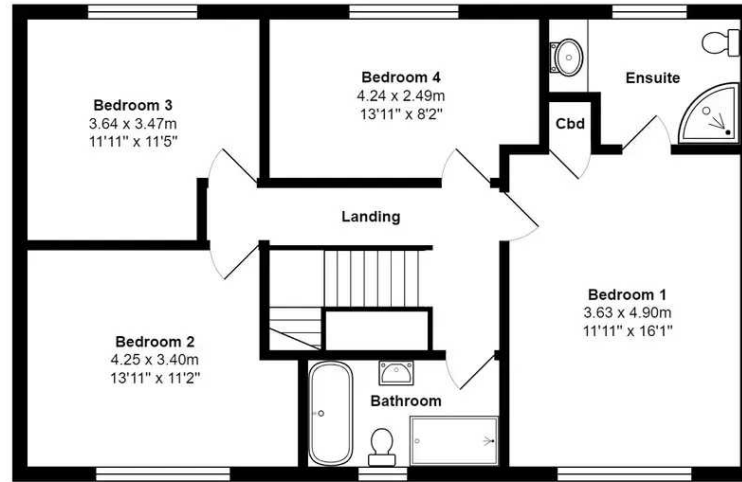
Tenure: Freehold

- HIGHLY PRESTIGIOUS ADDRESS
- 4 DOUBLE BEDROOMS 2 BATHROOMS
- FLEXIBLE LIVING SPACE
- DRIVEWAY PARKING FOR MULTIPLE VEHICLES
- DOUBLE GARAGE
- HIGHLY PRIVATE REAR GARDEN
- CLOSE TO COUNTRYSIDE WALKS
- CLOSE TO SCHOOLS
- CLOSE TO TOWN CENTRE

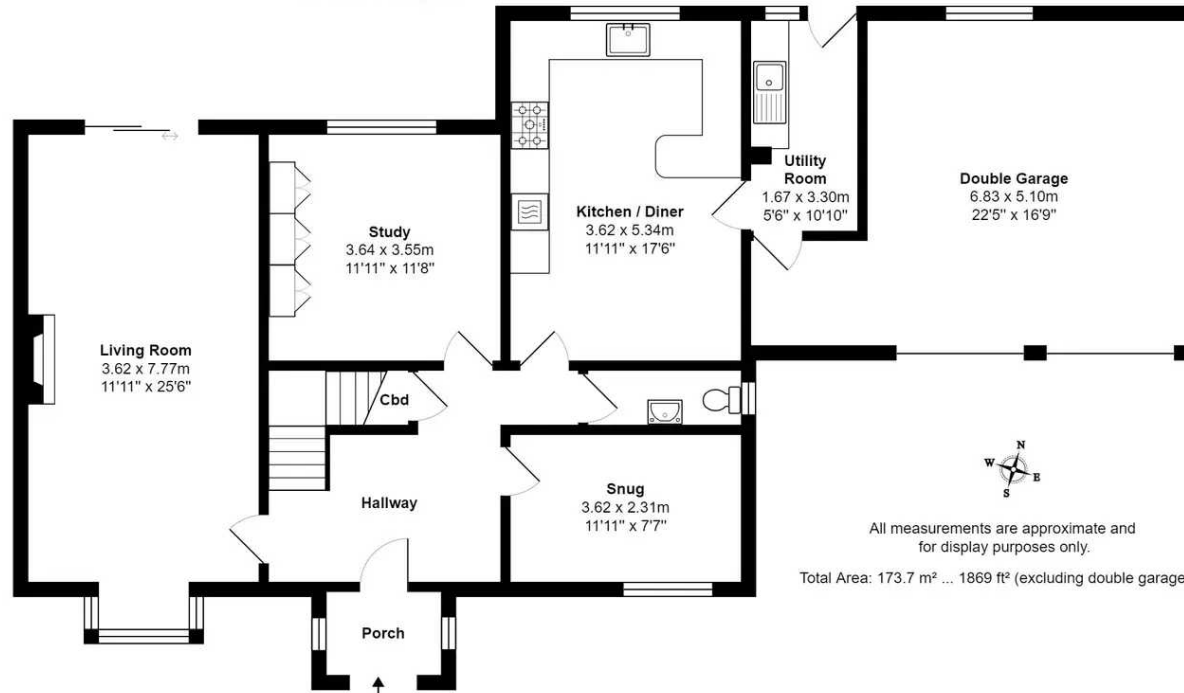


MYRINGS





First Floor
 Area: 78.7 m² ... 848 ft²



All measurements are approximate and
 for display purposes only.

Total Area: 173.7 m² ... 1869 ft² (excluding double garage)

Ground Floor
 Area: 94.9 m² ... 1022 ft²





Myrings Estate Agents

Myrings Estate Agents Ltd, 10 Princes Square - HG1 1LX

01423
566400

• enquiries@myringsestateagents.com • <http://myringsestateagents.com/>

