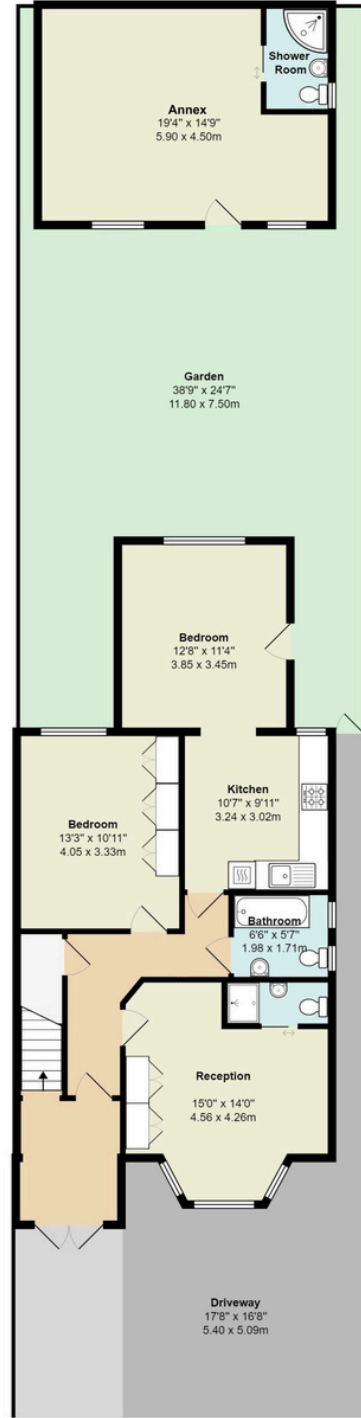




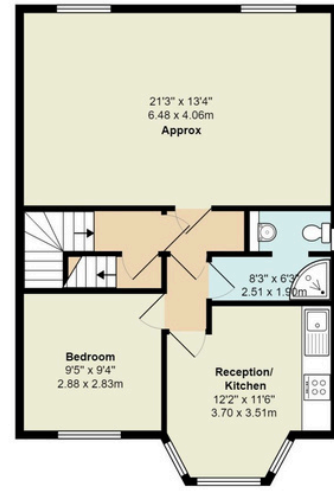
### Montpelier Rise NW11

a: 2171 ft<sup>2</sup> ... 201.7 m<sup>2</sup> Including Annex  
sa 1881 ft<sup>2</sup> ... 174.8 m<sup>2</sup> Excluding Annex

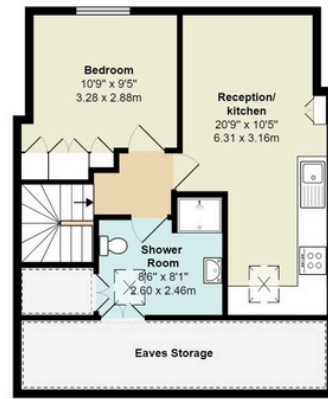
**Ground Floor**  
Area: 1108 ft<sup>2</sup> ... 103.0 m<sup>2</sup>  
**First Floor**  
Area: 636 ft<sup>2</sup> ... 59.1 m<sup>2</sup>  
**Second Floor**  
Area: 427 ft<sup>2</sup> ... 39.6 m<sup>2</sup>



Ground Floor



First Floor



Second Floor



## Montpelier Rise, Golders Green, NW11

### Guide Price: £1,195,000

Explore the potential of this spacious semi-detached house in Montpelier Rise, Golders Green. With five/six bedrooms, five bathrooms, and four reception rooms, it offers ample living space.

Currently arranged as three large apartments, this residence is ideal for homeowners or investors. The flexible layout allows for various living arrangements, from generating rental income to creating a single, expansive dwelling.

Located in desirable Golders Green, enjoy easy access to amenities and green spaces. The well-maintained rear garden, with an annex, is perfect for relaxation or entertaining.

With the right planning permissions, there's huge potential to enhance this property further. Easily commute with nearby transport links.

This remarkable house is offered for sale with no onward chain, ensuring a hassle-free purchase. Don't miss out on this opportunity for your next property investment or forever home.



903-905 Finchley Road Golders Green London NW11 7PE

Telephone 020 8381 4970 Email [info@moreland.uk.com](mailto:info@moreland.uk.com)

Registered Office Unit 8, Alpha Business Park, Travellers Close, Welham Green AL9 7NT Registered in England No. 3663497 Vat No. 701775936

Residential Sales Lettings Full Management Financial Services New Homes





Tenure Freehold

2171 sqft / 201.7 m2

6 Bedrooms

4 Bathrooms

Drive

