



Discovery Road, Plymouth

£190,000



Discovery Road

Plymouth, Plymouth

Sublime first floor apartment with west facing balcony, allocated parking, large open plan living, exquisite shower room & large double bedroom. Finished to a wonderful standard, with a large utility cupboard & permission to holiday let. No onward chain.

Council Tax band: B

Tenure: Leasehold

EPC Energy Efficiency Rating: B

EPC Environmental Impact Rating: B

- First Floor Apartment
- Large Open Plan Living Space
- Underfloor Heating
- Generously Sized Shower Room
- Allocated Parking
- West Facing Covered Balcony
- Substantial Double Bedroom
- No Onward Chain
- Holiday Let Potential

Located on the first floor, you enter the property into the hallway. The hallway has a solid wood floor, with underfloor heating and gives access to the open plan living space, bedroom, shower room and utility cupboard. There is a telephone entry system. The utility cupboard has plumbing and space for a washer/dryer and houses the heat exchanger. There is ample space for addition storage. The open plan living space has the continuation of solid wood flooring and has a fitted kitchen to the rear and sliding patio doors which open onto the balcony. There is ample room for a range of large furniture. The kitchen has a range of integral appliances, which include a dishwasher, induction hob, fridge/freezer and electric fan oven. There is an inset stainless steel sink drainer unit with a range of wall and base mounted units complete with a square edge work surface over.

The double bedroom has a window to the side elevation and a door which opens out onto the balcony. The bedroom is a good double size with ample space for a range of large furniture. The shower room has a walk in shower, with a low level w/c, hand wash basin and a heated towel rail. The shower room is fully tiled. The whole apartment has underfloor heating.

Tenure - Leasehold

Lease Length - 999 Years from 2011

Service Charge & Ground Rent - £1300 & £250 per annum Approx

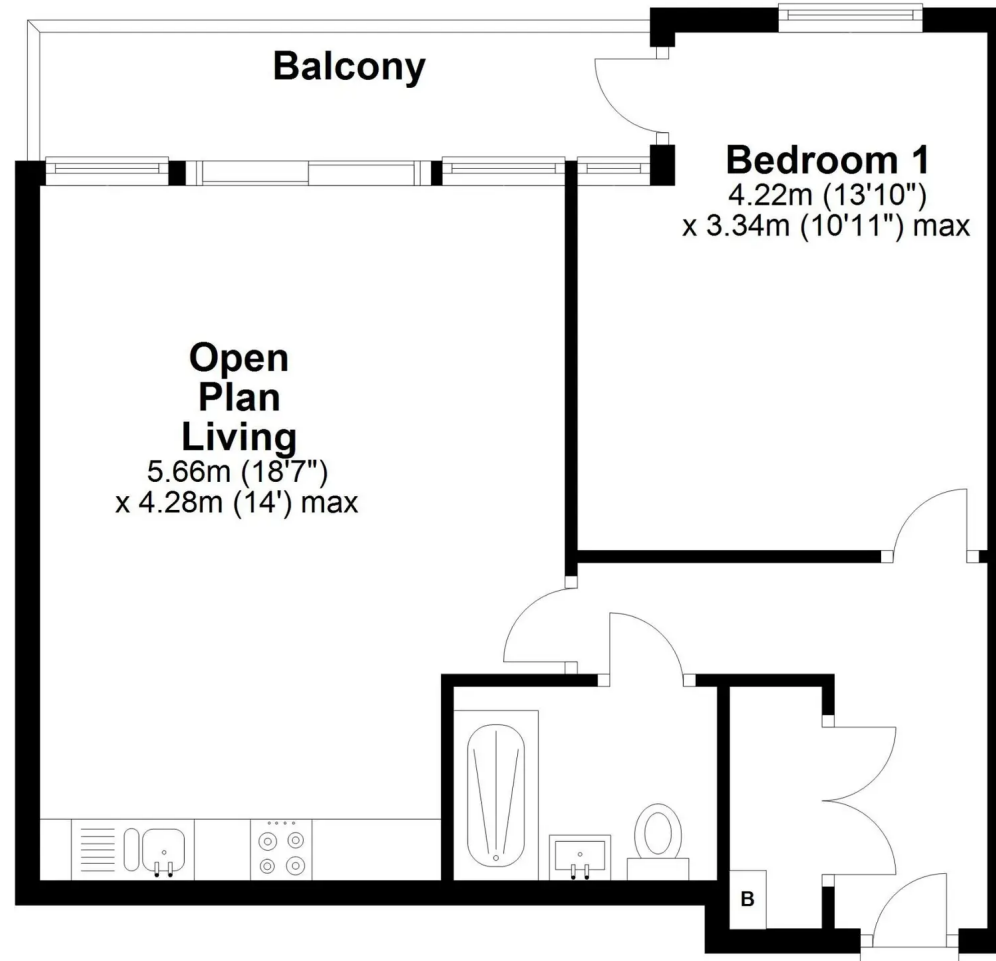
EPC - B

Council Tax - B



First Floor

Approx. 46.2 sq. metres (497.3 sq. feet)



Total area: approx. 46.2 sq. metres (497.3 sq. feet)

Leeward House, Mount Wise, Plymouth

Atwell Martin

Atwell Martin, 65 Southside Street – PL1 2LA

01752 202121 • plymouthsales@atwell-martin.co.uk • plymouth.atwellmartin.co.uk/

Atwell Martin Plymouth endeavour to ensure the accuracy of property details produced and displayed. Please note that we have not tested any apparatus, equipment, fixtures, fittings or services and so cannot verify that they are connected, in working order or fit for purpose. It is imperative that the buyer of any property makes such checks, prior to purchase so as to satisfy themselves of the properties suitability for their purchase.