

Love Homes



Shorts Avenue, Shortstown, Bedford, MK42 0FP

Nestled in sought-after 'Sefton Fields' of Shortstown, this spacious four-bedroom family home offers proximity to schools, parks, and amenities. Featuring a well-appointed kitchen, bay-fronted living room, and dining area with garden access, it's perfect for gatherings. Upstairs, enjoy four bedrooms, including a master suite. Commuter-friendly with garage and garden.



This property is presented by Stuart Scott - a Love Homes property expert with over 25 years' experience.

Find out more about this property by scanning the QR code.



4.0m



4



2



2

Tenure: Freehold Council Tax Band:D

Flitwick & Ampthill 01525 713111



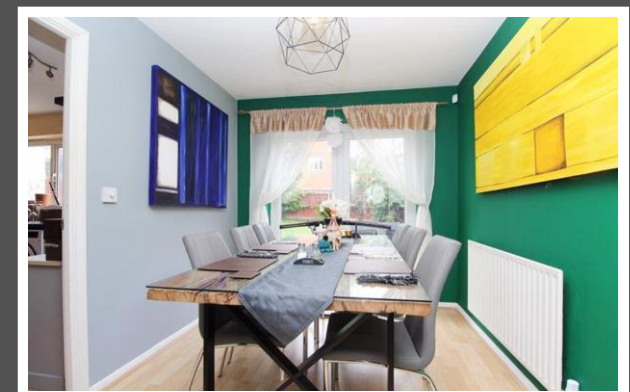
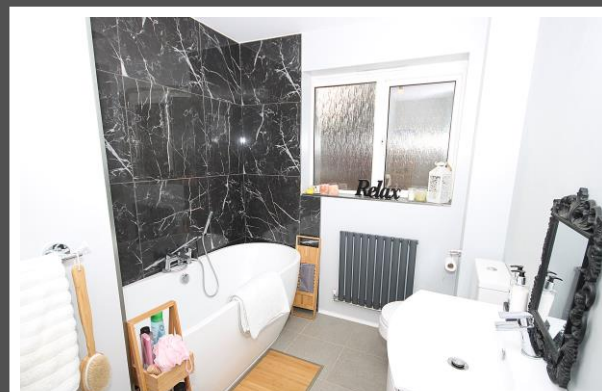
Barton-le-Clay and Luton 01582 882440



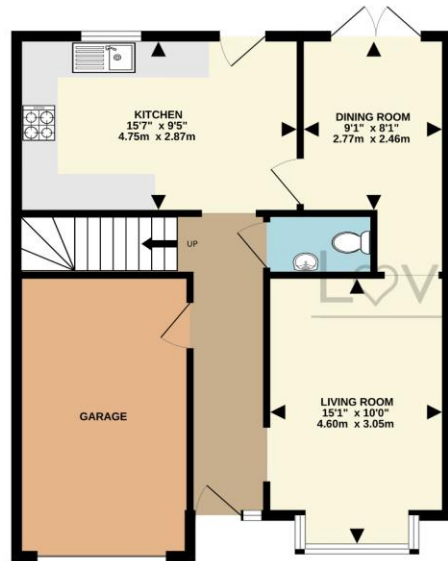
Biggleswade & Sandy 01767 669222



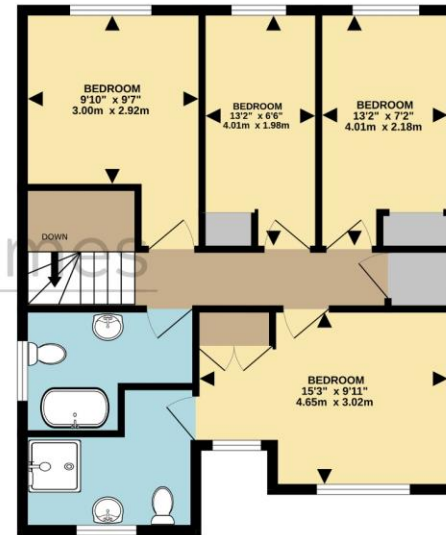
“If you’ve grown out of your current property and are looking for a house with great space in a lovely, quiet village location, close to amenities, then this is the home for you. Not only does the house have a lovely kitchen and dining room for hosting guests, (and family moments) the four bedrooms upstairs are all really well proportioned and the garden is a great size. We use most of the rooms to accommodate our growing list of hobbies, but it would be perfect for a growing family. The village itself has a friendly vibe, with loads of community activities and pretty much every amenity you’d need on your doorstep.”



GROUND FLOOR
656 sq.ft. (60.9 sq.m.) approx.



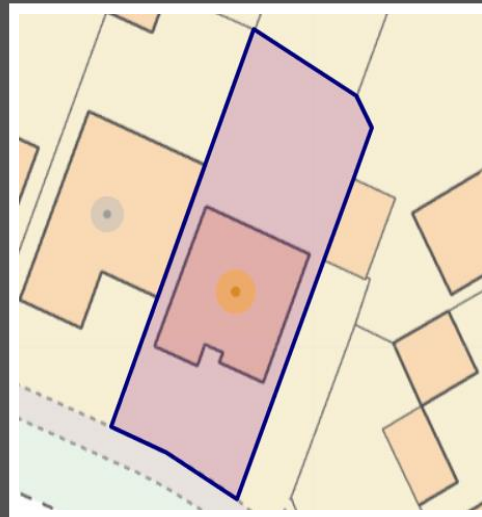
1ST FLOOR
634 sq.ft. (58.9 sq.m.) approx.



TOTAL FLOOR AREA : 1290 sq.ft. (119.9 sq.m.) approx.

Drawn by Love Homes for illustrative purposes only. Measurements and areas shown are approximate.
Made with Metropix ©2024

Score	Energy rating	Current	Potential
92+	A		
81-91	B		86 B
69-80	C	74 C	
55-68	D		
39-54	E		
21-38	F		
1-20	G		



These particulars are set out as a general outline in accordance with the Property Misdescriptions Act (1991) only for the guidance of intending purchasers or lessees, and do not constitute any part of an offer or contract. Details are given without any responsibility, and any intending purchasers, lessees or third parties should not rely on them as statements or representations of fact but must satisfy themselves by inspection or otherwise as to the correctness of each of them. We have not carried out a structural survey and the services, appliances and specific fittings have not been tested. All photographs, measurements, floor plans and distances referred to are given as a guide only and should not be relied upon for the purchase of carpets or any other fixtures or fittings. Gardens, roof terraces, balconies and communal gardens as well as tenure and lease details cannot have their accuracy guaranteed for intending purchasers. Lease details, service ground rent (where applicable) are given as a guide only and should be checked and confirmed by your solicitor prior to exchange of contracts. No person in the employment of Love Homes has any authority to make any representation or warranty whatever in relation to this property. Purchase prices, rents or other prices quoted are correct at the date of publication and, unless otherwise stated, are exclusive of VAT. We retain the copyright in all advertising material used to market this Property. All information is as advised by the seller and subject to change. Council tax bands can be subject to change by the local council.

5 The Russell Centre, Coniston Road, Flitwick, MK45 1QY
Tel: 01525 713111

Email: flitwick@lovehomes.uk

www.lovehomes.uk



Love Homes