

FOR SALE



Stonehills House, Stonehills

Two Bedroom, One Bathroom Apartment

ASKING PRICE £225,000





- **CHAIN FREE!!**
- **Modern Two Bedroom Apartment with own entrance**
- **Pristine Condition**
- **Situated in a prime position in WGC Town Centre just minutes from the Train Station**
- **Contemporary Bathroom**
- **Ideal as a Residential purchase or Investment opportunity**

Energy Efficiency Rating

Score	Energy rating	Current	Potential
92+	A		
81-91	B		
69-80	C		
55-68	D	56 D	56 D
39-54	E		
21-38	F		
1-20	G		

SUMMARY

CHAIN FREE!! This immaculate TWO-bedroom first floor purpose built Apartment is located in the heart of Welwyn Garden City, with the **TRAIN STATION** situated just minutes from the property. The property is a stone's throw from **JOHN LEWIS** and **WAITROSE**, together with other retail units, restaurants, and coffee shops. The Apartment is modern, light, and airy, and features its own private entrance, together with entrance porch and hall, two bedrooms, open-plan kitchen/diner/lounge, and contemporary bathroom. **VIEWING** is highly recommended!!

ENTRANCE PORCH

Front door leading into porch area with tiled floor, entry-phone, storage cupboard, cupboard housing hot water tank, and ceiling light.

ENTRANCE HALL

Laminate floor, ceiling lights.

BEDROOM ONE

Carpet, radiator, two double-glazed windows, ceiling lights.



BEDROOM TWO

Carpet, radiator, two-double-glazed windows, ceiling lights.

OPEN-PLAN KITCHEN/DINER/LOUNGE

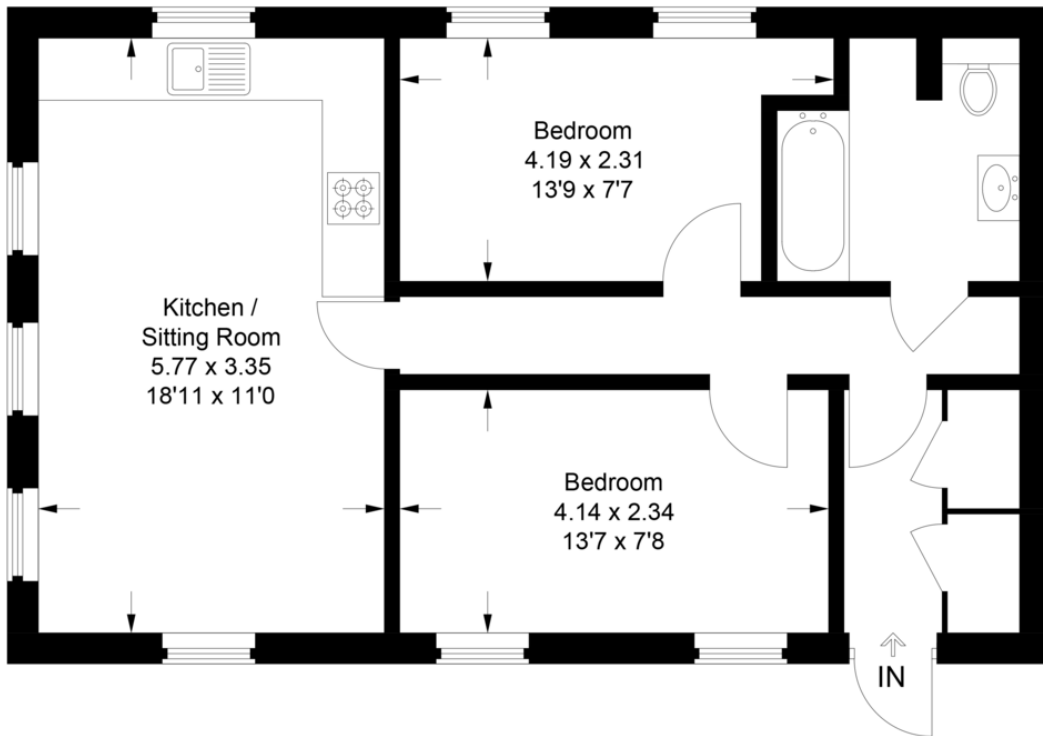
Laminate floor, radiator, four double-glazed windows featuring fitted white shutters, ceiling lights. The kitchen area has a range of modern grey wall and base units, a stainless steel sink with mixer tap, laminate worktops and splashbacks, integrated appliances including electric oven and hob with filter hood over, washing machine and fridge-freezer, radiator, ceiling lights.

BATHROOM

Tiled floor and walls, electric heating panel, contemporary white bathroom suite comprising bath with stainless steel mixer tap, electric shower and screen, sink housed in vanity unit with stainless steel mixer tap, low-level flush WC, built-in mirrors, extractor fan, ceiling lights.



Approximate Gross Internal Area
54.8 sq m / 590 sq ft



This plan is for layout guidance only. Not drawn to scale unless stated. Windows and door openings are approximate. Whilst every care is taken in the preparation of this plan, please check all dimensions, shapes and compass bearings before making any decisions reliant upon them.
© C.J Property Marketing Ltd Produced for Martin & Co

Martin & Co Welwyn

16 Howardsgate • Welwyn Garden City • AL8 6BQ

T: 01707 334576 • E: welwyn@martinco.com <http://welwyn.martinco.com>

01707 334576



Accuracy: References to the Tenure of a Property are based on information supplied by the Seller. The Agent has not had sight of the title documents. A Buyer is advised to obtain verification from their Solicitor. Items shown in photographs including but not limited to carpets, fixtures and fittings are not included unless specifically mentioned within the sales particulars. They may however be available by separate negotiation. Buyers must check the availability of any property and make an appointment to view before embarking on any journey to see a property. No person in the employment of the agent has any authority to make any representation about the property, and accordingly any information given is entirely without responsibility on the part of the agents, sellers(s) or lessors(s). Any property particulars are not an offer or contract, nor form part of one. **Sonic / Laser Tape:** Measurements taken using a sonic / laser tape measure may be subject to a small margin of error. **All Measurements:** All Measurements are Approximate. **Services Not tested:** The Agent has not tested any apparatus, equipment, fixtures and fittings or services and so cannot verify that they are in working order or fit for the purpose. A Buyer is advised to obtain verification from their Solicitor or Surveyor.