



43 Cannonbury Avenue, Pinner

Pinner

£850,000



LAWRENCE RAND

43 Cannonbury Avenue

Pinner, Pinner

Council Tax band: E

Tenure: Freehold

EPC Energy Efficiency Rating:

EPC Environmental Impact Rating:

- Extended Family Home
- 4 Bedrooms
- G/F Shower Room
- F/F Bathroom
- Large Rear Garden
- Ample Driveway Parking
- Close to Cannon Lane & Pinner High Schools
- Easy Access to Shops & Stations





Lr LAWRENCE RAND



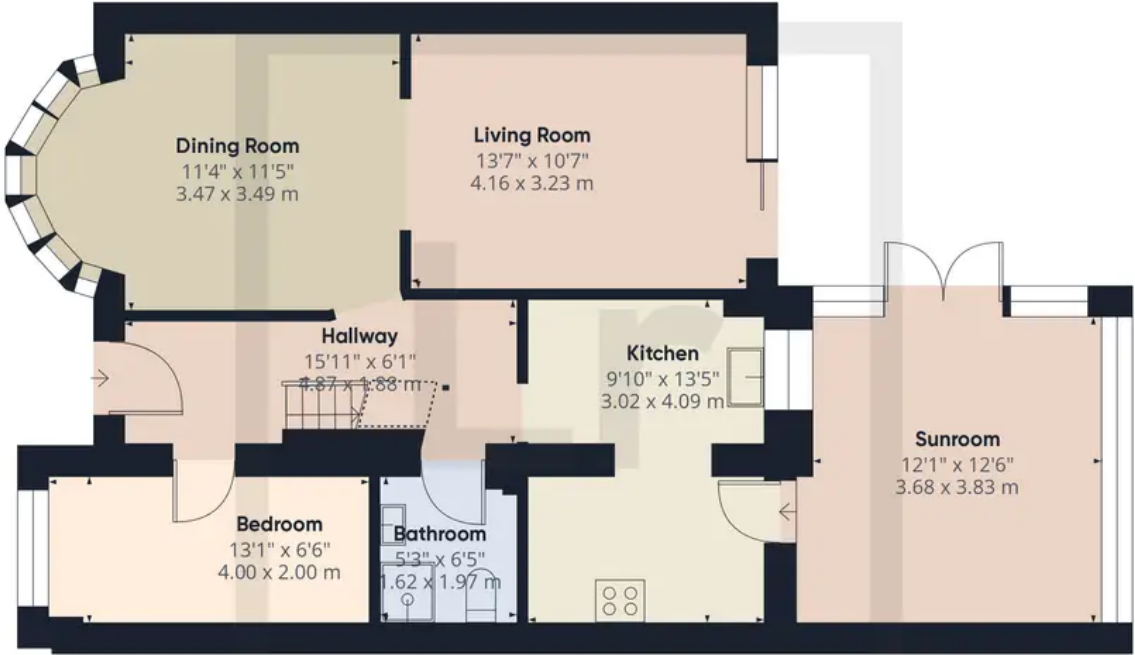
Lr LAWRENCE RAND



Lr LAWRENCE RAND



Lr LAWRENCE RAND



Ground Floor



Floor 1

Approximate total area
1236.25 ft²
114.85 m²

Reduced headroom
6.19 ft²
0.57 m²

(1) Excluding balconies and terraces

☐ Reduced headroom
(below 1.5m/4.92ft)

While every attempt has been made to ensure accuracy, all measurements are approximate, not to scale. This floor plan is for illustrative purposes only.



Lawrence Rand

Lawrence Rand, 106 Victoria Road - HA4 0AL

01895 632211

Info@lawrence-rand.co.uk

www.lawrence-rand.co.uk/



LAWRENCE RAND