



# Langton Lodge, St Johns Road, Main Street

Knaresborough

Guide Price £1,350,000



# MYRINGS

Harrogate's Family Estate Agent

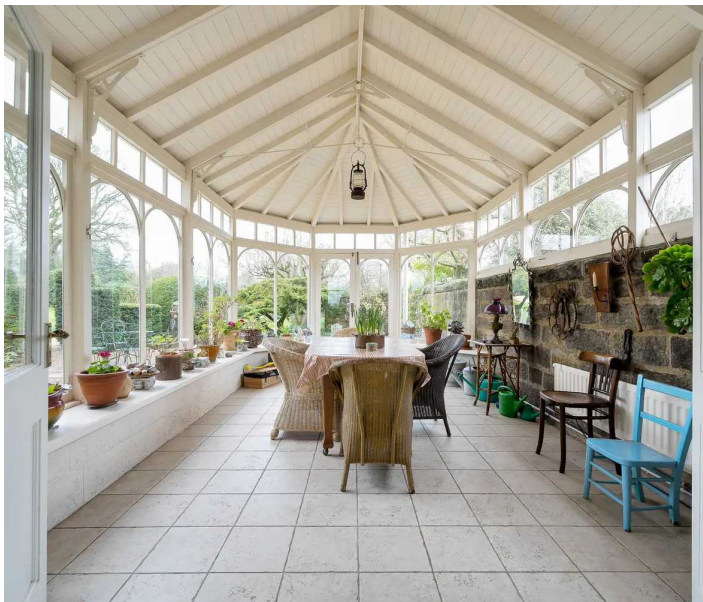


## Langton Lodge, St Johns Road

Main Street, Knaresborough

MAGNIFICENT COUNTRYSIDE VIEWS - HIGHLY DESIRABLE VILLAGE LOCATION - VILLAGE PRIMARY SCHOOL 3 MINUTES DRIVE - EXCELLENT VILLAGE PUB 4 MINUTES WALK - 0.6 ACRE PLOT - OVER 3,000 SQ FT OF ACCOMMODATION - POTENTIAL TO EXTEND - EXTENSIVE SOUTH FACING GARDENS  
Council Tax band: H

- MAGNIFICENT COUNTRYSIDE VIEWS
- HIGHLY DESIRABLE VILLAGE LOCATION
- VILLAGE PRIMARY SCHOOL 3 MINUTES DRIVE
- EXCELLENT VILLAGE PUB 4 MINUTES WALK
- 0.6 ACRE PLOT
- OVER 3,000 SQ FT OF ACCOMMODATION
- POTENTIAL TO EXTEND
- EXTENSIVE SOUTH FACING GARDENS



MYRINGS



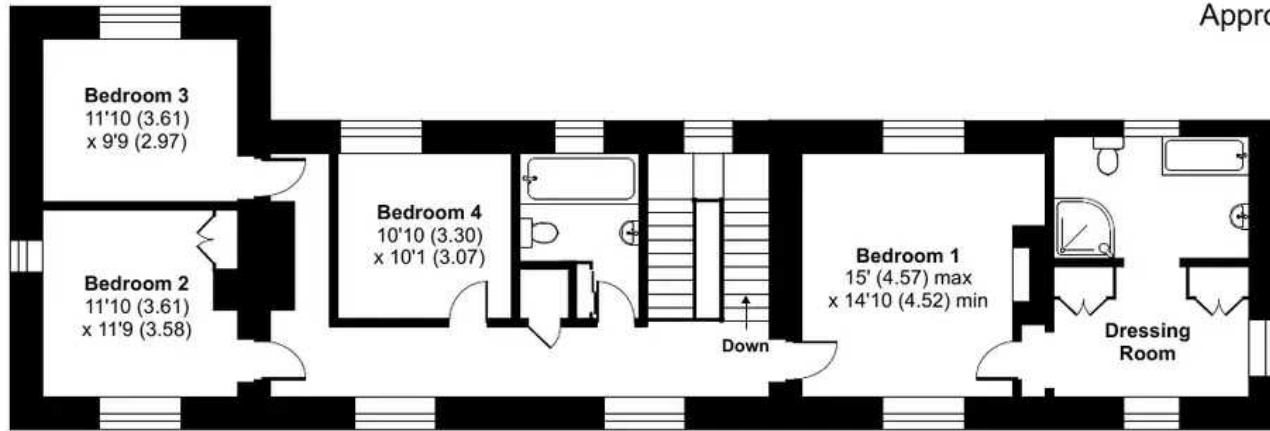
# Main Street, Knaresborough, HG5

Approximate Area = 3639 sq ft / 338.1 sq m

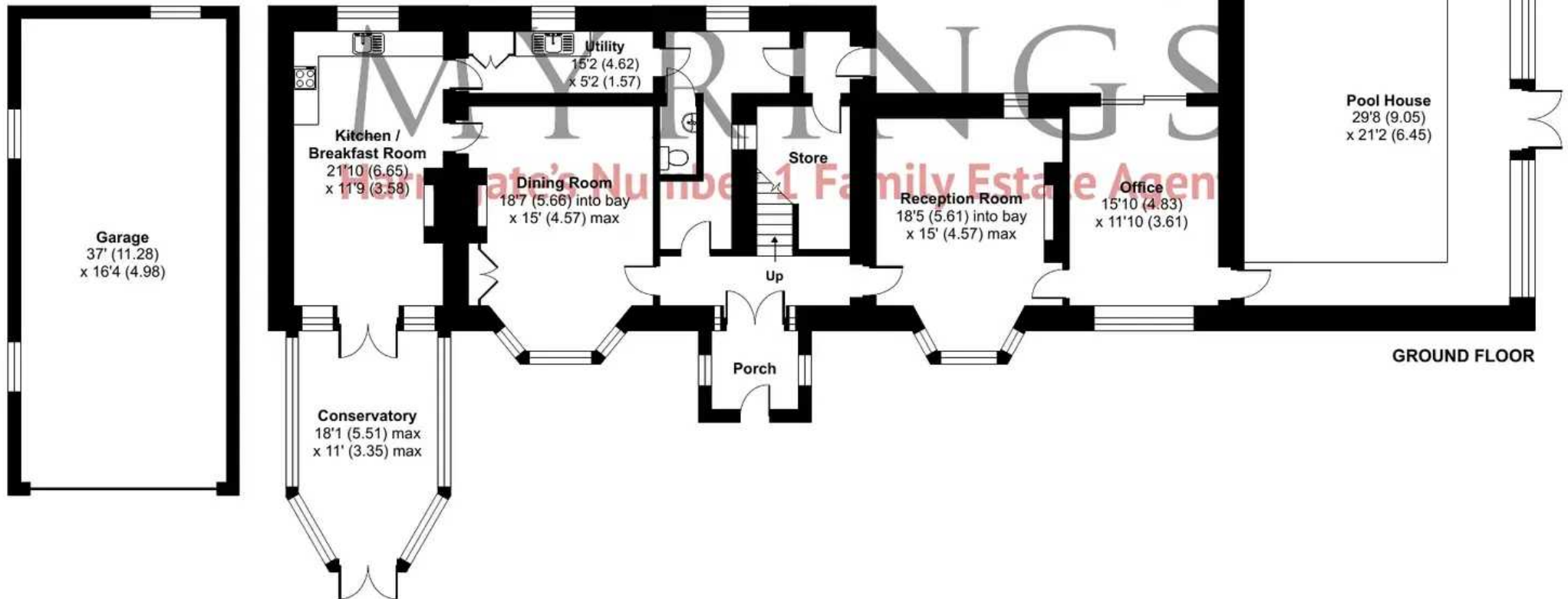
Garage = 613 sq ft / 56.9 sq m

Total = 4252 sq ft / 395 sq m

For identification only - Not to scale



FIRST FLOOR



GROUND FLOOR



Floor plan produced in accordance with RICS Property Measurement Standards incorporating International Property Measurement Standards (IPMS2 Residential). © nitchecom 2023. Produced for Myrings. REF: 1092645





## Myrings Estate Agents

Myrings Estate Agents Ltd, 10 Princes Square - HG1 1LX

01423  
566400

• [enquiries@myringsestateagents.com](mailto:enquiries@myringsestateagents.com) • <http://myringsestateagents.com/>

