



Endeavour Court, PLYMOUTH

£160,000

**ATWELL
MARTIN**
ESTATE AGENTS



Endeavour Court

PLYMOUTH

A top floor two bedroom apartment in this well regarded, purpose-built block in the popular and convenient area of Stoke.

Tenure: Leasehold

- Open Plan Living Room/Kitchen
- Shared Garage Parking
- Gas Central Heating
- Two Double Bedrooms,
- Sea Views
- 728 sq ft





DESCRIPTION

Located on the 3rd floor of this purpose built block, the apartment comprises an L-shaped entrance hall with door to a useful storage cupboard and doors to principal rooms. The 26' living room is open plan to the kitchen and is double aspect with windows to the side and glazed door to the balcony. The well equipped kitchen boasts a range of white base and wall units with dark work surfaces over and integrated appliances including oven, gas hob with cooker hood over, washer/drier, dishwasher and fridge/freezer. Both bedrooms are doubles and the family bathroom features tiled walls and a contemporary white suite comprising panel bath with tiled surround and shower over, wash hand basin and WC.

LOCATION

The property is situated just off Valletort Road, an attractive tree lined avenue in the popular Stoke area of Plymouth. Conveniently located within walking distance of Stoke Village, with its wide range of amenities including local shops, restaurants, takeaways and pubs. There is a regular bus service into Plymouth city centre and Devonport Park is within walking distance. The city centre is only a mile away with an excellent range of shops including Drakes Circus shopping complex together with the nationally renowned Theatre Royal and the historic Barbican with its fine array of restaurants, cafes, bars and bespoke boutiques.

SERVICES/MAINTENANCE CHARGES

Mains water, electricity, gas and drainage. TENURE: Leasehold. 125 years from 1/1/07. GROUND RENT: £225.00 Per Annum SERVICE CHARGE: £1300.00 Per Annum COUNCIL TAX BAND B.



24 Endeavour Court

Approximate Gross Internal Area = 67.6 sq m / 728 sq ft

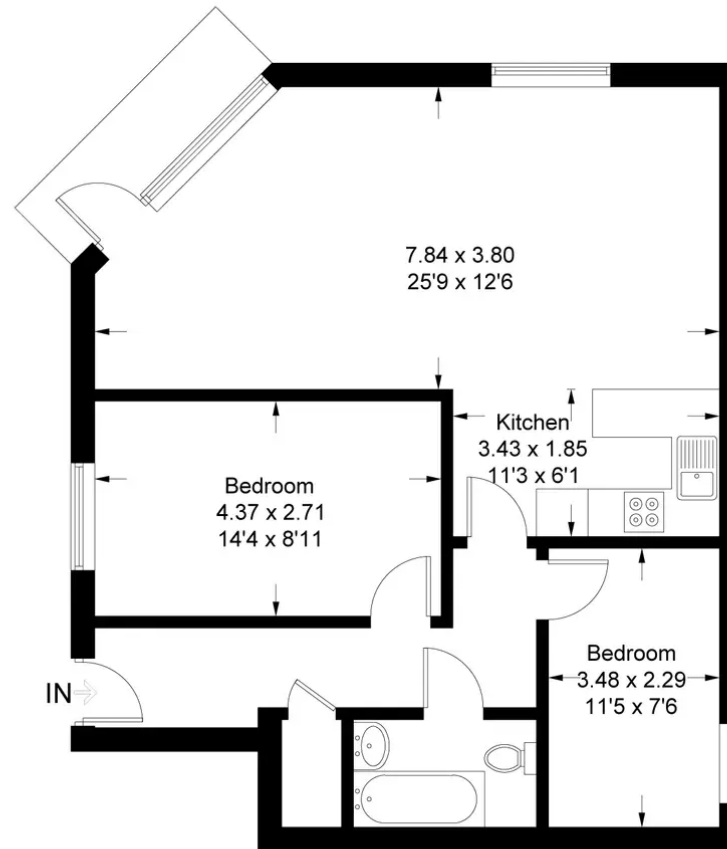


Illustration for identification purposes only, measurements are approximate, not to scale. FloorplansUsketch.com © 2016 (ID256651)

Atwell Martin

Atwell Martin, 65 Southside Street - PL1 2LA

01752 202121

plymouthsales@atwell-martin.co.uk

plymouth.atwellmartin.co.uk/

Atwell Martin Plymouth endeavour to ensure the accuracy of property details produced and displayed. Please note that we have not tested any apparatus, equipment, fixtures, fittings or services and so cannot verify that they are connected, in working order or fit for purpose. It is imperative that the buyer of any property makes such checks, prior to purchase so as to satisfy themselves of the properties suitability for their purchase. .