



Lancaster Road, Salford

Salford



In Excess of £250,000

# Lancaster Road

## Salford

This IMMACULATELY PRESENTED three bedroom, semi-detached family home is within walking distance of both Salford Royal Hospital and Light Oaks Primary School. Benefitting from a driveway providing off-road parking for several cars, viewing is essential! Council Tax band: C

Tenure: Leasehold

- Immaculately Presented, Three Bedroom Semi-Detached Family Home
- Located Within Walking Distance of Salford Royal Hospital
- Bay-Fronted Lounge Diner with Patio Doors to the Rear
- Modern Fitted Kitchen and a Downstairs W/C
- Three Well-Proportioned Bedrooms
- Contemporary, Three-Piece Family Bathroom
- Driveway to the Front Providing Off-Road Parking for Several Cars
- Well-Presented Garden to the Rear with Paving, Laid-to-Lawn Grass and Mature Trees
- Great Family Location, Close to Light Oaks Primary School and Multiple Parks
- Early Viewing is Essential!



HILLS

### **Porch**

Complete with a wall light point, double glazed window and tiled flooring.

### **Entrance Hallway**

Complete with a ceiling light point, double glazed window and wall mounted radiator. Fitted with laminate flooring.

### **W.C.**

4' 2" x 2' 7" (1.27m x 0.78m)

Complete with a ceiling light point, hand wash basin and W.C. Complete with laminate flooring.

### **Lounge / Diner**

18' 8" x 10' 10" (5.68m x 3.30m)

Complete with three ceiling light points, double glazed bay window and wall mounted radiator. Fitted with patio doors and laminate flooring.

### **Kitchen**

10' 6" x 7' 3" (3.21m x 2.21m)

Featuring complementary fitted units with integral hob, oven and washing machine. Complete with two ceiling light points, two double glazed windows and wall mounted radiator. Fitted with cushioned flooring.

### **Landing**

Complete with a ceiling light point, double glazed window and carpet flooring.

### **Bedroom One**

8' 8" x 8' 9" (2.63m x 2.66m)

Featuring fitted furniture. Complete with a ceiling light point, double glazed window and wall mounted radiator. Fitted with laminate flooring.

### **Bedroom Two**

10' 10" x 9' 9" (3.29m x 2.97m)

Complete with a ceiling light point, double glazed window and wall mounted radiator. Fitted with laminate flooring.



**Bedroom Three**

7' 0" x 6' 8" (2.14m x 2.02m)

Complete with a ceiling light point, double glazed window and wall mounted radiator. Fitted with laminate flooring.

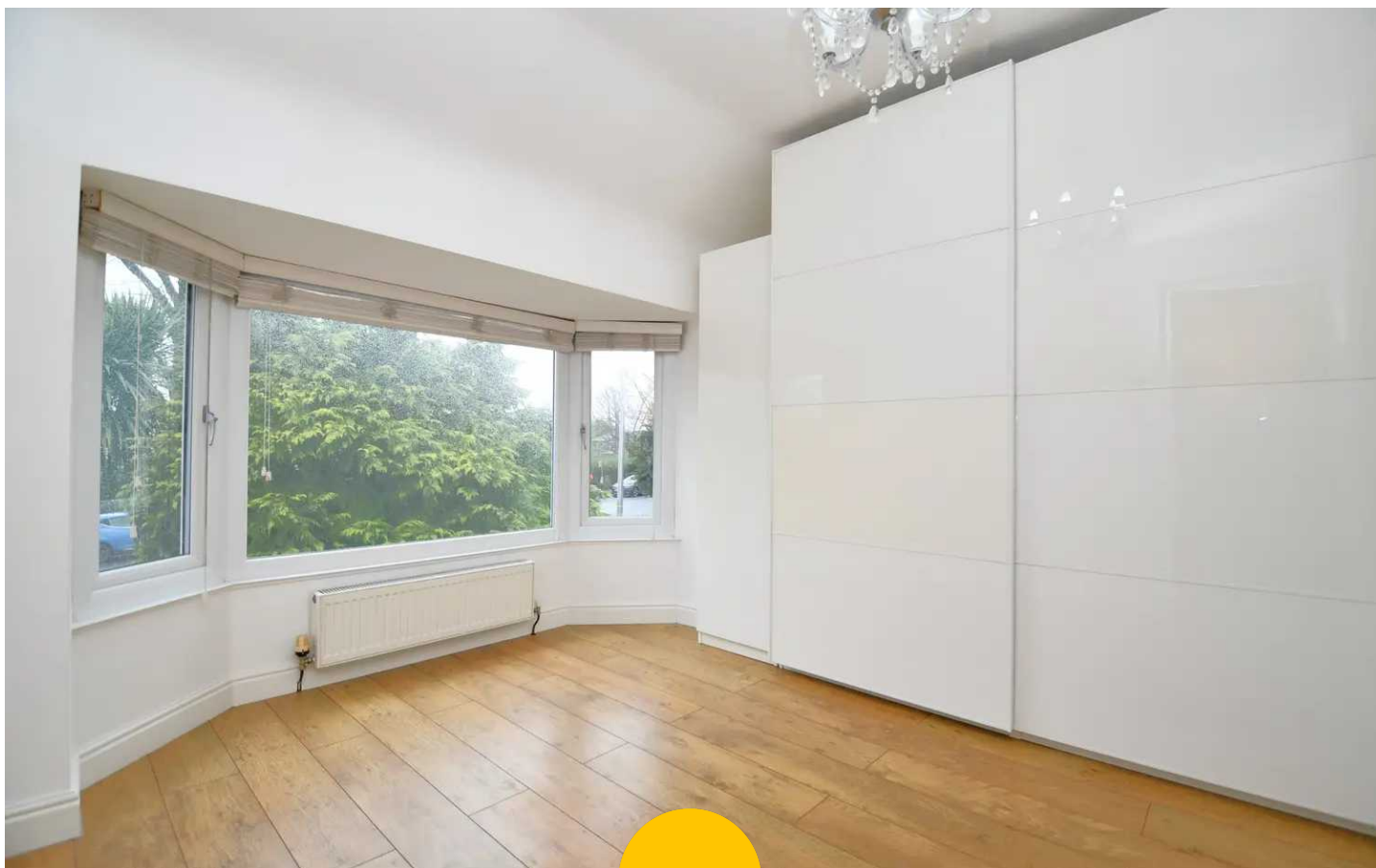
**Bathroom**

6' 6" x 5' 5" (1.98m x 1.66m)

Featuring a three-piece suite including bath with shower over, hand wash basin and W.C. Complete with ceiling spotlights, double glazed window, tiled walls and flooring.

**External**

To the front of the property is a driveway providing off-road parking for several cars. To the rear of the property is a well presented garden to the rear with paving, laid-to-lawn grass and mature trees.



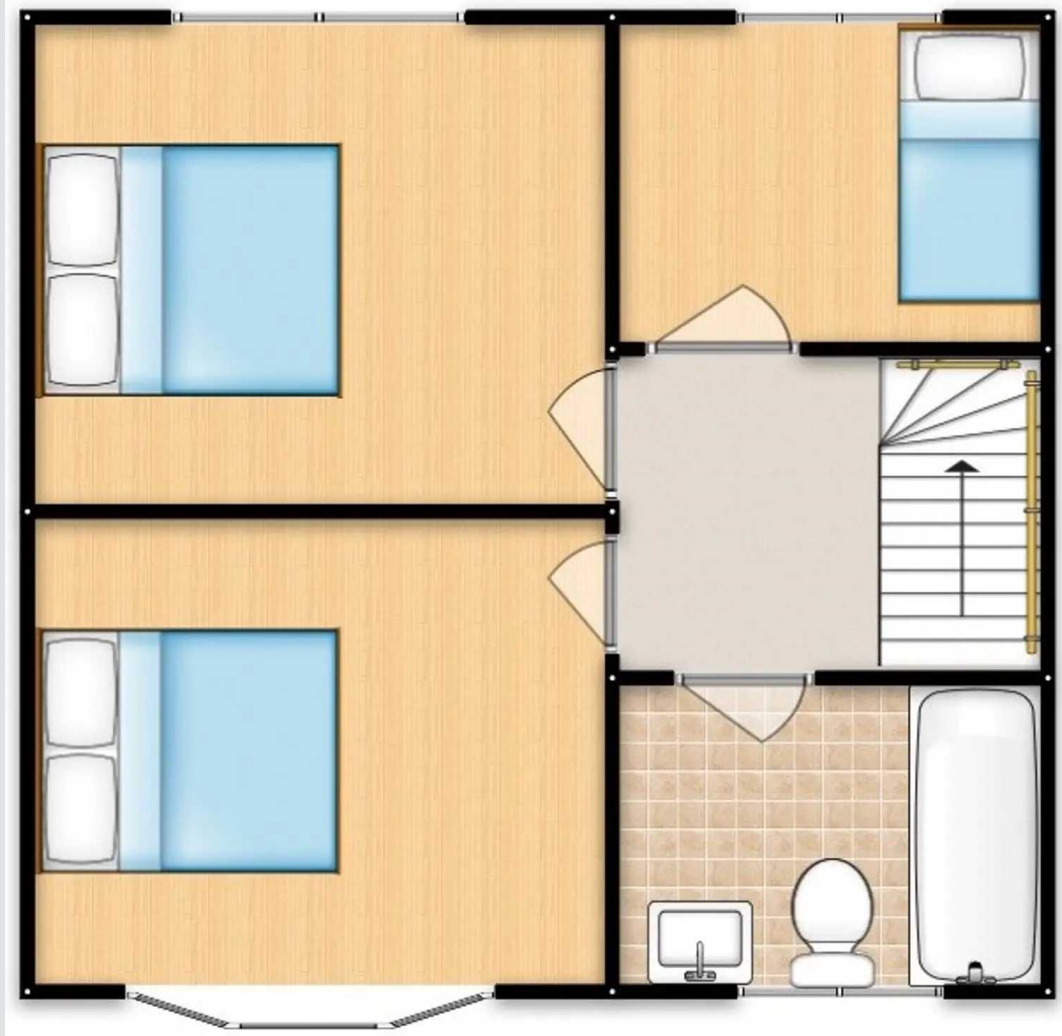
HILLS





HILLS







## Hills | Salfords Estate Agent

Hills Residential, Sentinel House Albert Street - M30 0SS

0161 707 4900

[sales@hills.agency](mailto:sales@hills.agency)

[www.hills.agency/](http://www.hills.agency/)



THE PROPERTY MISDESCRIPTIONS ACT 1991 The Agent has not tested any apparatus, equipment, fixtures and fittings or services and so cannot verify that they are in working order or fit for the purpose. A Buyer is advised to obtain verification from their Solicitor or Surveyor. References to the Tenure of a Property are based on information supplied by the Seller. The Agent has not had sight of the title documents. A Buyer is advised to obtain verification from their Solicitor. You are advised to check the availability of this property before travelling any distance to view. Every effort and precaution has been made to ensure these particulars are correct and not misleading but their accuracy is not guaranteed nor do they form part of any contract. If there is any point which is of particular importance to you, please contact us and we will provide any information you require. This is advisable, particularly if you intend to travel some distance to view the property. The mention of any appliances and services within these details does not imply that they are in full and efficient working order. These particulars are in draft form awaiting Vendors confirmation of their accuracy. These details must therefore be taken as a guide only.