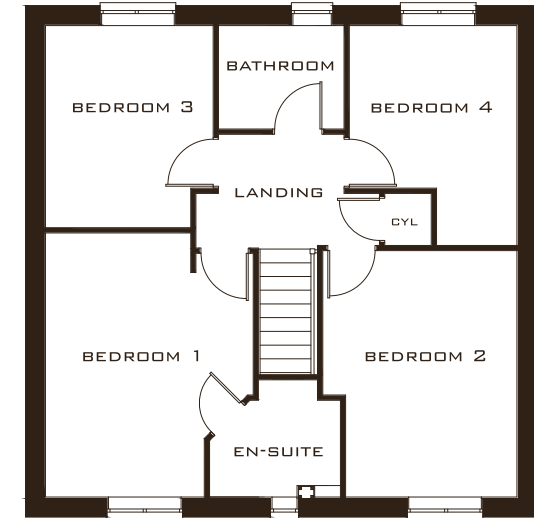
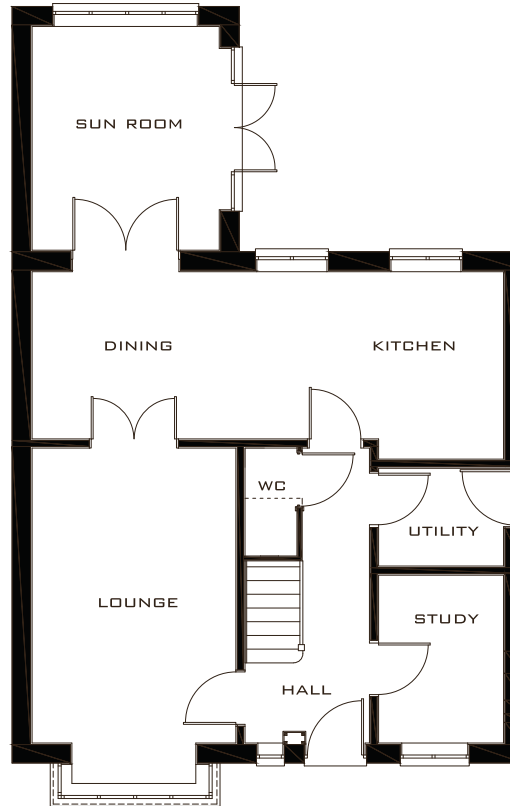


# THE JASPER

## A 4 BEDROOM HOUSE



### GROUND FLOOR

KITCHEN/DINING	7746 X 2748	25'4" X 9'0"
SUN ROOM	3076 X 3678	10'1" X 12'0"
LOUNGE	3348 X 4848	10'11" X 15'10"
WC	854 X 1775	2'9" X 5'9"
STUDY	2053 X 2758	6'8" X 9'0"
UTILITY	2053 X 1608	6'8" X 5'3"

### FIRST FLOOR

BEDROOM	3412(MAX) X 4339	11'2" X 14'2"
EN-SUITE	2150(MAX) X 1590(MIN)	7'0" X 5'2"
BEDROOM 2	2815(MIN) X 4048	9'2" X 13'3"
BEDROOM 3	2755(MAX) X 3321	9'0" X 10'10"
BEDROOM 4	2755 X 3612(MAX)	9'0" X 11'10"
BATHROOM	2064 X 1700	6'9" X 5'6"



[CYDENHOMES.CO.UK](http://CYDENHOMES.CO.UK)

**CONSUMER  
CODE FOR  
HOME BUILDERS**  
[www.consumercode.co.uk](http://www.consumercode.co.uk)

Whilst these particulars are prepared with due care for the convenience of the intending purchasers, the information contained therein is intended as a preliminary guide only. The photographs are of similar house types and may vary in terms of finish, detail and can be built in terraced, semi-detached or detached forms. Please ask your New Homes Sales Advisor for details. The right is expressly reserved by the company to amend or vary the same, and therefore nothing herein contained shall constitute or form part of any contract. The house type photograph is of a similar property.