



Wroxall Drive, Willenhall, Coventry CV3 3GB

Guide Price **£170,000**



Wroxall Drive

Willenhall, Coventry

This extremely spacious three bedroomed home offers fantastic potential. There is gas central heating and double glazing and with the particular advantage of a wide plot with a private direct driveway leading to a garage.

Council Tax band: A

Tenure: Freehold

EPC Energy Efficiency Rating: D

EPC Environmental Impact Rating: D

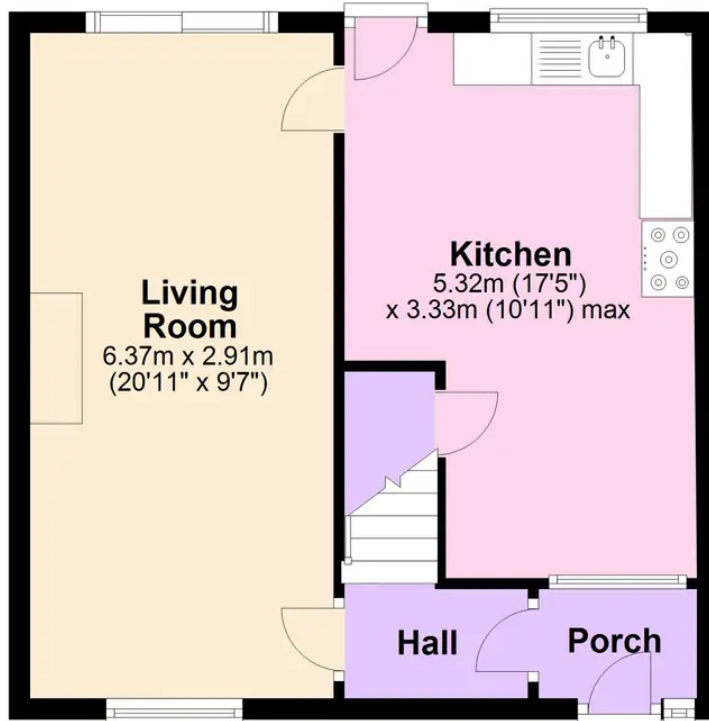
- Spacious family home offering excellent potential
- Through living room and spacious dining kitchen
- Three good sized bedrooms, bathroom and separate WC
- Wide plot with direct car access to driveway and garage
- Easy access to excellent local amenities and road network





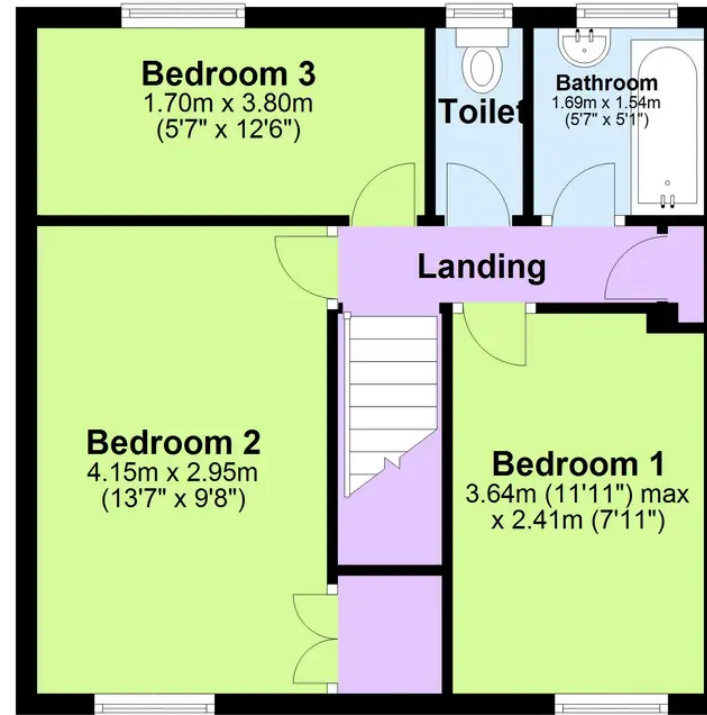
Ground Floor

Approx. 40.6 sq. metres (436.7 sq. feet)



First Floor

Approx. 40.0 sq. metres (430.2 sq. feet)



Total area: approx. 80.5 sq. metres (866.9 sq. feet)

This floor plan is for illustrative purposes only and should be used as such by any prospective purchaser. Whilst every attempt has been made to ensure the accuracy of this plan, measurements of doors, windows, rooms and other items are approximate and no responsibility is taken for any error, omission or mis-statement.

Plan produced using PlanUp.

Coopers Estate Agents

Coopers, 22 New Union Street - CV1 2HN

024 7655 2841 • sales@coopersestateagents.com • www.coopersestateagents.com/

Coopers Chartered Surveyors Ltd, 22 New Union Street, Coventry, West Midlands

CV1 2HN, 024 7655 2841, sales@coopers-cov.com. Company Registration

Number: 6725089 / VAT number: 940 3555 34