

Broadland Fields

POSTWICK, NORWICH

A collection of 1, 2, 3 & 4 bedroom
houses available with Shared Ownership

A home of your own

Contents

Welcome to Broadland Fields	3
Make your move in Norwich	4
Living at Broadland Fields	6
Local area	8
Transport connections	11
Site plan	12
Floor plans	14
Specification	34
Shared Ownership explained	36
A guide to owning your own home	38
About Legal & General Affordable Homes	40



River Wensum in the centre of Norwich

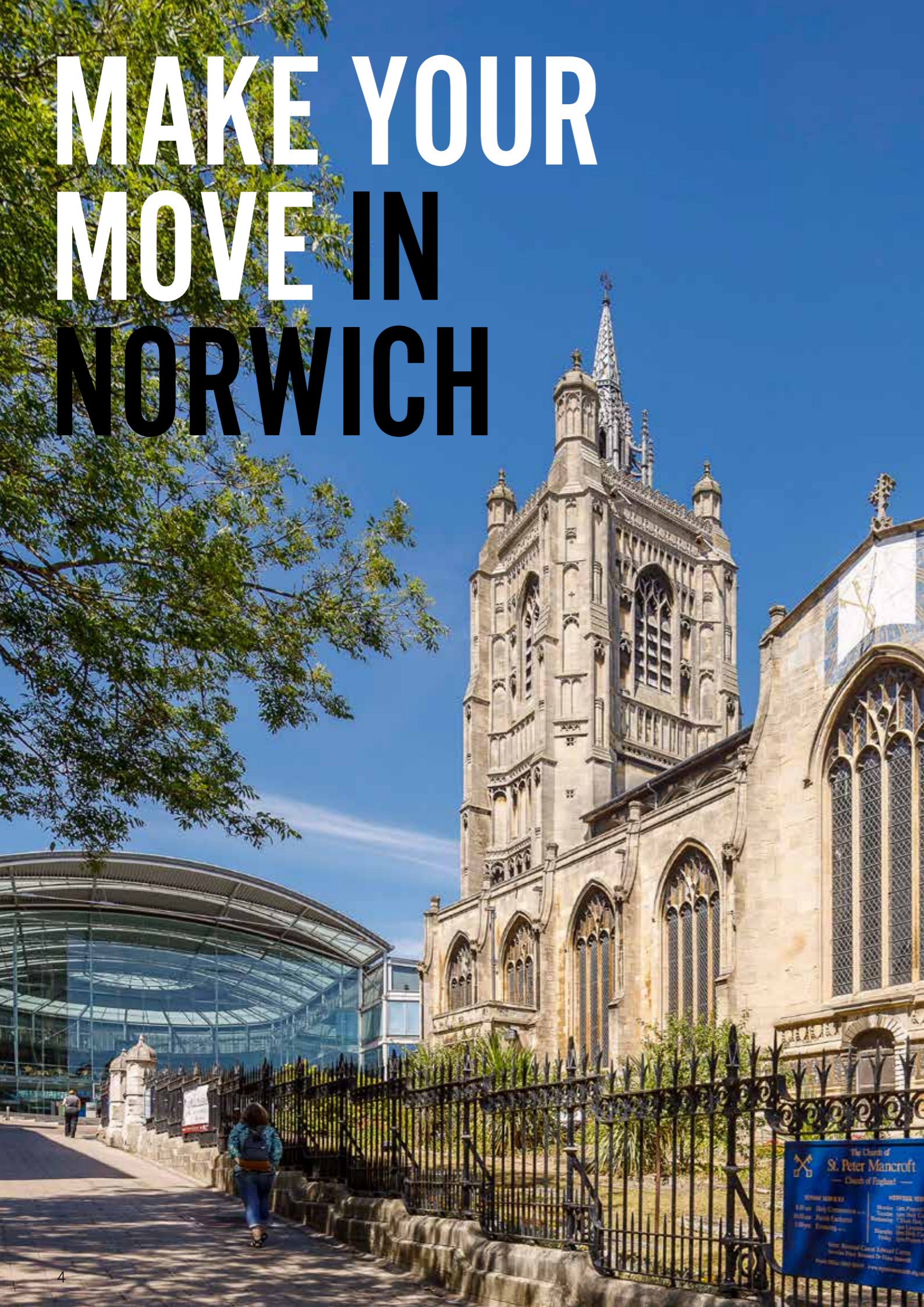
Welcome to Broadland Fields

Set on the outskirts of Norwich, close to the River Yare, just at the point where the streets give way to the open fields and big skies of the Norfolk countryside, the new community of homes at Broadland Fields offers the perfect place to put down roots in a home of your own.

The homes at Broadland Fields are perfectly placed to benefit from a range of nearby amenities, including pubs, restaurants and sports clubs, as well as an excellent choice of schools within easy travelling distance. Locally there's a brand new Lidl nearby for all your essential shopping and Norwich town centre is less than 15 minutes drive away. Whether you're heading into Norwich for a big night out, or cruising gently in a boat along the Norfolk Broads, this is a location that offers the best of town and country.

Legal & General Affordable Homes is offering a unique opportunity to live at Broadland Fields through Shared Ownership. Thanks to this scheme, you can get on the property ladder with a lower deposit than is required to buy outright or with other buying schemes.

MAKE YOUR MOVE IN NORWICH



EXPERIENCE LIFE IN NORWICH



HISTORIC LOCATION

Wander the streets that still carry a lot of their medieval charm, including some remains of the ancient city walls and a wealth of historic buildings.



PLENTY OF AMENITIES

From independent shops to well-known retailers, a market, restaurants, bars, cinema and theatre – there's lots to explore.

RICH CULTURE

Great theatres, vibrant festivals, stunning heritage and a whole array of other arts delights for people to enjoy.



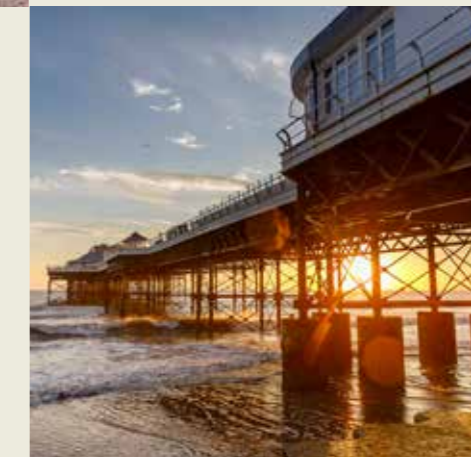
A VIBRANT CITY CENTRE

The Norfolk & Norwich Festival in May is over 200 years old and one of the largest international arts festival in the country.



NATURE & GREEN SPACES

Behind the Cathedral are the Plantation Gardens, Norwich's very own Secret Garden. Or venture to the vast Whitlingham Country Park or the stunning Broads National Park.



CLOSE TO THE SEASIDE

Just a short drive to the coast, with a range of beaches within an hour's drive.

Living at Broadland Fields



Beautifully designed

Attractive new homes built with your lifestyle in mind.



Express yourself

The neutral décor invites you to add your own touches and create your own look.



Sit back in style

You'll immediately feel at home in the well-proportioned dining and living areas.



Unique location

Live close to a city and Norfolk Broads, with the big skies, calm lakes and open fields of Norfolk around you.



Make yourself at home

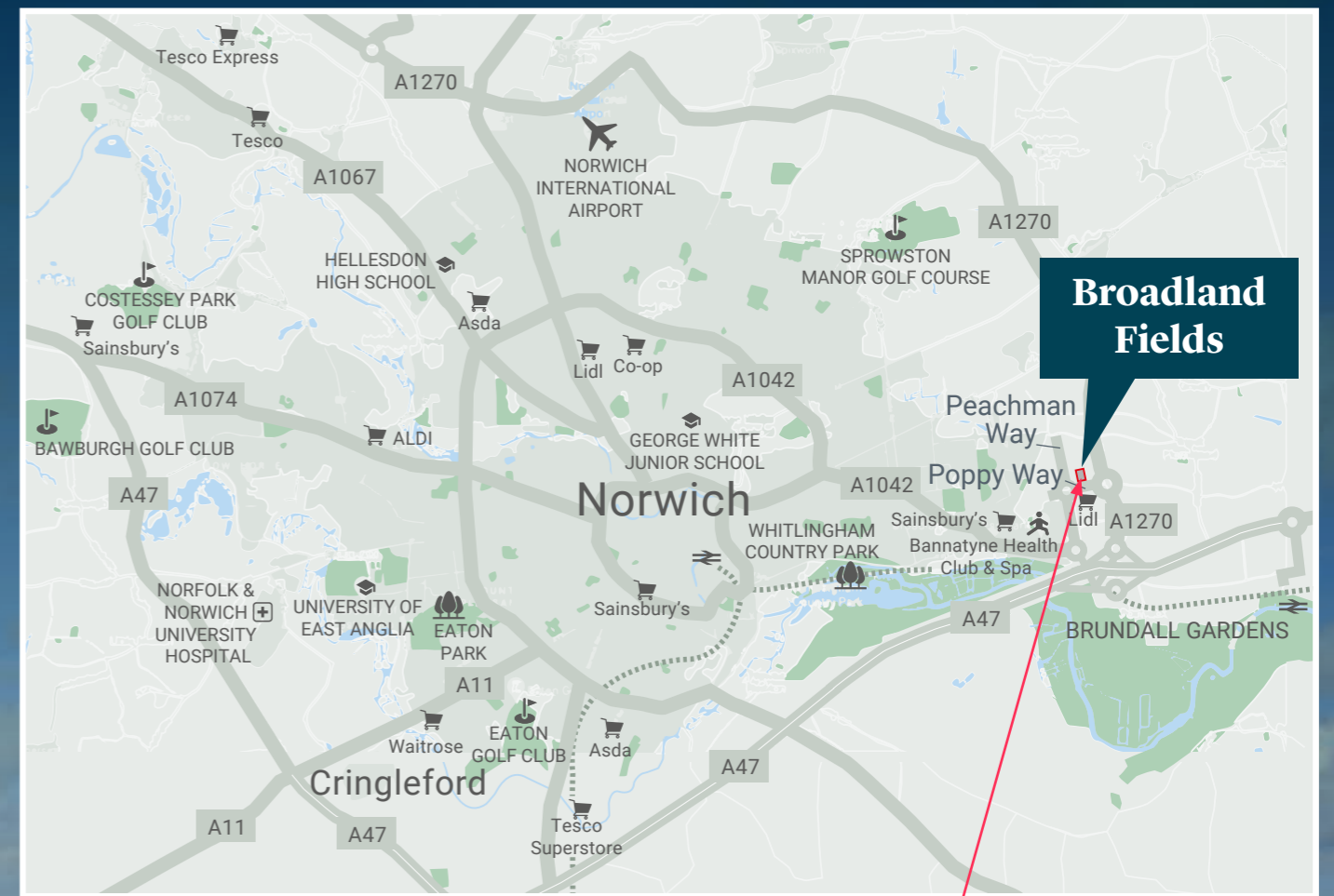
A perfect place to live

Options in every direction

Norwich is a beautiful city to have as a next door neighbour with its cobbled streets and open spaces, impressive Norman cathedral and imposing castle. There are intriguing boutiques and large shopping malls, a wide choice of restaurants, bars and clubs together with live theatre and a thriving arts scene.

Head away from town and you'll soon reach the Norfolk Broads National Park. This unique area of waterways, windmills and wildlife is the perfect place to spend a lazy summer's day. Whether boating, walking, cycling or seeking a glimpse of the local flora and fauna, you'll never be short of new things to explore.

East Anglia is full of great days out for all the family. There are heritage railways and royal palaces, magnificent views and ancient forests. You'll have every type of seaside you could wish for – from the bright lights of Great Yarmouth's Golden Mile to the crab restaurants of Cromer and the quiet beaches in between where you can walk for miles and see more seals than humans.



Mid Yare National Nature Reserve



The Norfolk Broads



The Royal Arcade, Norwich



Norwich Castle

You're connected

With so many places to enjoy

Norwich boasts one of East Anglia's main rail stations with frequent services to Ipswich, Colchester, Thetford, Ely, Peterborough and London Liverpool Street.

The A47 runs close to the city providing you with easy access to Great Yarmouth, Ipswich and other destinations across East Anglia. It also links you to the M11 and national motorway network.

Norwich Airport is also nearby for when you're travelling further afield, and it's a straightforward drive to connect with Stansted.

Yet maybe the best form of transport when you live at Broadland Fields is to take a canoe or paddleboard out onto the waters at nearby Whitlingham Country Park.



By Car

Lidl Supermarket
200 meters

Brundall Gardens Station
2.5 miles

Norwich Railway Station
3.9 miles

Whitlingham Country Park
5.3 miles

Chantry Place
5.5 miles

Norwich International Airport
8.9 miles

Great Yarmouth
16.8 miles



By Train

Norwich*
10 mins

Ipswich
38 mins

Cambridge
1 hour 17 mins

Chelmsford
1 hour 18 mins

Peterborough
1 hour 27 mins

London Liverpool Street
1 hour 51 mins

Stansted Airport
1 hour 55 mins



Local Area

Post Office
1.3 miles

Doctor's Surgery
1.5 miles

Sainsbury's Supermarket
1.5 miles

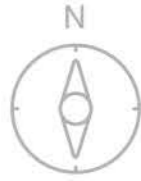
Thorpe St Andrew
Secondary School
1.9 miles

Brundall Primary School
3.4 miles

University of East Anglia
6.5 miles

Bure Marshes National
Nature Reserve
6.7 miles

Site Plan



Key

- One Bedroom Houses
- LGAH Rented Homes
- Two Bedroom Houses
- Allison Homes
- Three Bedroom Houses
- Photovoltaic Panels
- Four Bedroom Houses
- Future LGAH Shared Ownership Homes
- BCP** Bin Collection Point

Layout is indicative only and subject to change by the developer [and subject to detailed design]. Parking positions to be confirmed. The developer reserves the right to alter the layout, building style, landscaping and specification at anytime.

One Bedroom Houses

Plot Nos. 98, 99*, 100, 101*, 109* & 110



First Floor



Ground Floor



Front Elevation

Two Bedroom Houses

Plot Nos 67, 68*, 87, 88†, 89*, 92, 93*, 94 & 95*



Ground Floor



First Floor



Front Elevation

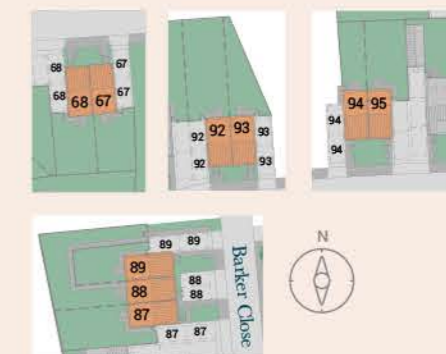
Key
 FF - FRIDGE/FREEZER B - BOILER DW - DISHWASHER WD - WASHER/DRYER
 * Plots 99, 101 & 109 are handed to the plan drawn

Dimensions	TOTAL AREA: 51.9 SQ M 559 SQ FT			
	Length	Width	Length	Width
Living/Dining/Kitchen	5.32m x 4.72m	17' 5" x 15' 6"		
Bedroom	5.32m x 4.72m	17' 5" x 15' 6"		



Key
 FF - FRIDGE/FREEZER B - BOILER DW - DISHWASHER WD - WASHER/DRYER W - WARDROBE
 * Plots 68, 89, 93 & 95 are handed to the plan drawn † Plot 88 has no side window

Dimensions	TOTAL AREA: 60.6 SQ M 652 SQ FT			
	Length	Width	Length	Width
Living	4.11m x 3.76m	13' 5" x 12' 4"		
Kitchen/Dining Room	3.76m x 2.50m	12' 4" x 8' 2"		
Bedroom 1	2.79m x 3.76m	9' 2" x 12' 4"		
Bedroom 2	3.12m x 2.75m	10' 2" x 9' 0"		



Two Bedroom Houses

Plot Nos 45, 46*, 73, 74*, 75† & 76*



Front Elevation



Ground Floor

First Floor

Three Bedroom Houses

Plot Nos. 51 & 91*



Front Elevation



Ground Floor

First Floor

Key

FF - FRIDGE/FREEZER B - BOILER DW - DISHWASHER WD - WASHER/DRYER W - WARDROBE

* Plots 46 & 76 are handed to the plan drawn

† Plots 74 & 75 have no side window

Key

FF - FRIDGE/FREEZER B - BOILER DW - DISHWASHER WD - WASHER/DRYER

* Plot 91 is handed to the plan drawn

Dimensions TOTAL AREA: 76.9 SQ M 828 SQ FT

	Length	Width	Length	Width
Living Room	4.99m	x 3.76m	16' 5"	x 12' 4"
Kitchen/Dining Room	3.79m	x 3.76m	12' 5"	x 12' 4"
Bedroom 1	4.08m	x 3.76m	13' 5"	x 12' 4"
Bedroom 2	3.99m	x 2.74m	13' 1"	x 9' 0"



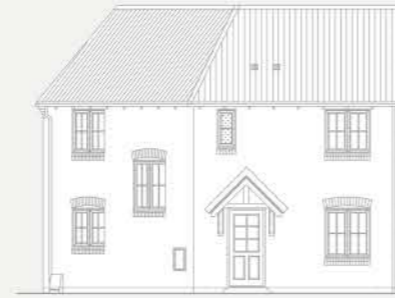
Dimensions TOTAL AREA: 74.4 SQ M 801 SQ FT

	Length	Width	Length	Width
Living Room	4.62m	x 3.62m	15' 2"	x 11' 11"
Kitchen/Dining Room	3.20m	x 2.47m	10' 6"	x 8' 1"
Bedroom 1	4.62m	x 2.61m	15' 2"	x 8' 7"
Bedroom 2	2.91m	x 2.66m	9' 7"	x 8' 9"
Bedroom 3	3.38m	x 1.90m	11' 1"	x 6' 3"



Three Bedroom Houses

Plot Nos 69 & 70*



Front Elevation



Ground Floor



First Floor

Key
 FF - FRIDGE/FREEZER B - BOILER DW - DISHWASHER WD - WASHER/DRYER
 * Plot 70 is handed to the plan drawn

Dimensions TOTAL AREA: 83.1 SQ M 894 SQ FT

	Length	Width	Length	Width
Living Room	5.01m	2.89m	16' 5"	9' 6"
Kitchen/Dining Room	5.01m	2.65m	16' 5"	8' 8"
Bedroom 1	3.24m	2.77m	10' 11"	9' 1"
Bedroom 2	2.71m	2.69m	8' 11"	8' 10"
Bedroom 3	3.05m	2.23m	10' 0"	7' 4"



Three Bedroom Houses

Plot Nos. 35, 36† & 37*



Front Elevation



Ground Floor



First Floor

Key
 FF - FRIDGE/FREEZER B - BOILER DW - DISHWASHER WD - WASHER/DRYER
 * Plot 37 is handed to the plan drawn
 † Plot 36 has no side window

Dimensions TOTAL AREA: 83.7 SQ M 901 SQ FT

	Length	Width	Length	Width
Living Room	4.62m	4.01m	15' 2"	13' 2"
Kitchen/Dining Room	3.80m	2.47m	12' 6"	8' 1"
Bedroom 1	4.62m	2.57m	15' 2"	8' 5"
Bedroom 2	2.91m	2.66m	9' 7"	8' 9"
Bedroom 3	3.99m	1.90m	13' 1"	6' 3"



Three Bedroom Houses

Plot Nos. 42, 43*, 58, 59*, 82 & 83*



Front Elevation



Ground Floor



First Floor

Three Bedroom Houses

Plot Nos. 44*, 123* & 126



Front Elevation



First Floor



Ground Floor

Key

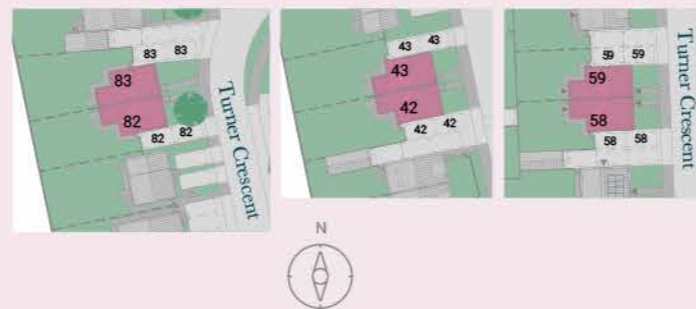
FF - FRIDGE/FREEZER B - BOILER DW - DISHWASHER WD - WASHER/DRYER AC - AIRING CUPBOARD * Plots 43, 59 & 83 are handed to the plan drawn

Key

FF - FRIDGE/FREEZER B - BOILER DW - DISHWASHER WD - WASHER/DRYER AC - AIRING CUPBOARD * Plots 44 & 123 are handed to the plan drawn

Dimensions TOTAL AREA: 85.3 SQ M 918 SQ FT

	Length	Width	Length	Width
Living Room	4.38m	x 3.75m	14' 5"	x 12' 4"
Kitchen/Dining Room	5.24m	x 4.91m	17' 2"	x 16' 1"
Bedroom 1	4.91m	x 3.20m	16' 1"	x 10' 6"
Bedroom 2	2.72m	x 2.64m	8' 11"	x 8' 8"
Bedroom 3	2.78m	x 2.13m	9' 1"	x 7' 0"



Dimensions TOTAL AREA: 90.2 SQ M 971 SQ FT

	Length	Width	Length	Width
Living Room	5.68m	x 3.09m	18' 8"	x 10' 2"
Kitchen/Dining Room	5.68m	x 3.64m	18' 8"	x 11' 11"
Bedroom 1	3.62m	x 3.13m	11' 11"	x 10' 3"
Bedroom 2	3.64m	x 3.14m	11' 11"	x 10' 4"
Bedroom 3	2.54m	x 2.48m	8' 4"	x 8' 2"



Three Bedroom Houses

Plot Nos. 63



First Floor



Front Elevation



Ground Floor

Key

FF - FRIDGE/FREEZER B - BOILER DW - DISHWASHER WD - WASHER/DRYER AC - AIRING CUPBOARD

Dimensions TOTAL AREA: 90.2 SQ M 971 SQ FT

	Length	Width	Length	Width
Living Room	5.68m	x 3.09m	18' 8"	x 10' 2"
Kitchen/Dining Room	5.68m	x 3.64m	18' 8"	x 11' 11"
Bedroom 1	3.62m	x 3.13m	11' 11"	x 10' 3"
Bedroom 2	3.64m	x 3.14m	11' 11"	x 10' 4"
Bedroom 3	2.54m	x 2.48m	8' 4"	x 8' 2"



Three Bedroom Houses

Plot Nos. 1, 3, 52*, 64 & 90



First Floor



Front Elevation



Ground Floor

Key

FF - FRIDGE/FREEZER B - BOILER DW - DISHWASHER WD - WASHER/DRYER AC - AIRING CUPBOARD

* Plot 52 is handed to the plan drawn

Dimensions TOTAL AREA: 91.1 SQ M 981 SQ FT

	Length	Width	Length	Width
Living Room	5.68m	x 3.20m	18' 8"	x 10' 6"
Kitchen/Dining Room	5.68m	x 3.63m	18' 8"	x 11' 11"
Bedroom 1	3.62m	x 3.25m	11' 11"	x 10' 8"
Bedroom 2	3.64m	x 3.14m	11' 11"	x 10' 4"
Bedroom 3	2.54m	x 2.48m	8' 4"	x 8' 2"



Three Bedroom Houses

Plot Nos. 38*, 39, 47*, 48†, 49**, 50, 77, 78*, 102, 103*
116*, 117**†, 118, 124* & 125



Front Elevation



Ground Floor

First Floor

Second Floor

Key

FF - FRIDGE/FREEZER B - BOILER DW - DISHWASHER WD - WASHER/DRYER

* Plots 38, 47, 49, 78, 103, 116, 117 & 124 are handed to the plan drawn

† Plots 48, 49 & 117 have no side window



Dimensions TOTAL AREA: 97.6 SQ M 1,051 SQ FT

	Length	Width	Length	Width
Living Room	5.68m x 3.09m	18' 8" x 10' 2"		
Kitchen/Dining Room	5.68m x 3.64m	18' 8" x 11' 11"		
Bedroom 1	3.62m x 3.13m	11' 11" x 10' 3"		
Bedroom 2	3.64m x 3.14m	11' 11" x 10' 4"		
Bedroom 3	2.54m x 2.48m	8' 4" x 8' 2"		

Four Bedroom Houses

Plot Nos. 54, 55 & 115



Front Elevation



First Floor



Ground Floor

Key

FF - FRIDGE/FREEZER B - BOILER DW - DISHWASHER WD - WASHER/DRYER

Dimensions TOTAL AREA: 100.2 SQ M 1,079 SQ FT

	Length	Width	Length	Width
Living/Dining Room	6.70m x 4.67m	22' 0" x 15' 4"		
Kitchen	4.82m x 2.71m	15' 10" x 8' 11"		
Bedroom 1	3.90m x 2.70m	12' 10" x 8' 10"		
Bedroom 2	3.90m x 2.58m	12' 9" x 8' 6"		
Bedroom 3	2.74m x 2.70m	9' 0" x 8' 10"		
Bedroom 4	2.74m x 2.38m	9' 0" x 7' 10"		



Four Bedroom Houses

Plot No 120



First Floor



Front Elevation



Ground Floor

Key

FF - FRIDGE/FREEZER B - BOILER DW - DISHWASHER WD - WASHER/DRYER

Four Bedroom Houses

Plot Nos. 57, 113, 129* & 130



First Floor



Front Elevation



Ground Floor

Key

FF - FRIDGE/FREEZER B - BOILER DW - DISHWASHER WD - WASHER/DRYER AC - AIRING CUPBOARD

* Plot 129 is handed to the plan drawn

Dimensions TOTAL AREA: 117.5 SQ M 1,265 SQ FT

	Length	Width	Length	Width
Living /Dining Room	5.02m x 3.46m	16' 6" x 11' 4"		
Kitchen	6.07m x 3.04m	19' 11" x 10' 0"		
Bedroom 1	4.40m x 2.98m	14' 5" x 9' 9"		
Bedroom 2	3.47m x 3.35m	11' 5" x 11' 0"		
Bedroom 3	4.76m x 2.68m	15' 7" x 8' 10"		
Bedroom 4	3.12m x 2.57m	10' 3" x 8' 5"		



Dimensions TOTAL AREA: 117.1 SQ M 1,260 SQ FT

	Length	Width	Length	Width
Living Room	4.30m x 3.05m	14' 1" x 10' 0"		
Kitchen / Dining Room	7.82m x 3.09m	25' 8" x 10' 1"		
Study	2.60m x 2.56m	8' 6" x 8' 5"		
Bedroom 1	5.16m x 3.71m	16' 11" x 12' 2"		
Bedroom 2	3.71m x 2.73m	12' 2" x 9' 0"		
Bedroom 3	2.73m x 2.70m	8' 11" x 8' 10"		
Bedroom 4	2.70m x 2.23m	8' 10" x 7' 4"		



Four Bedroom Houses

Plot Nos. 40*, 41, 84*, 85, 86, 96* & 97



Front Elevation



Four Bedroom Houses

Plot No. 62



Front Elevation



First Floor



Ground Floor

Key
 FF - FRIDGE/FREEZER B - BOILER DW - DISHWASHER WD - WASHER/DRYER
 * Plots 40, 84 & 96 is handed to the plan drawn
 † Plot 85 has no side window

Key
 FF - FRIDGE/FREEZER B - BOILER DW - DISHWASHER WD - WASHER/DRYER AC - AIRING CUPBOARD

Dimensions TOTAL AREA: 118.4 SQ M 1,275 SQ FT

	Length	Width	Length	Width
Living Room	4.63m x 4.12m	15' 2" x 13' 6"		
Kitchen / Dining Room	3.34m x 3.09m	11' 0" x 10' 2"		
Bedroom 1	4.12m x 2.82m	13' 6" x 9' 3"		
Bedroom 2	3.20m x 2.63m	10' 6" x 8' 8"		
Bedroom 3	4.63m x 2.90m	15' 2" x 9' 6"		
Bedroom 4	4.63m x 2.85m	15' 2" x 9' 4"		



Dimensions TOTAL AREA: 120.7 SQ M 1,299 SQ FT

	Length	Width	Length	Width
Living Room	6.92m x 3.49m	22' 9" x 11' 5"		
Kitchen / Dining Room	6.92m x 3.09m	22' 9" x 10' 2"		
Bedroom 1	4.10m x 3.50m	13' 6" x 11' 6"		
Bedroom 2	4.10m x 3.13m	13' 5" x 10' 3"		
Bedroom 3	3.50m x 2.76m	11' 6" x 9' 1"		
Bedroom 4	2.76m x 2.68m	9' 1" x 8' 10"		



Four Bedroom Houses

Plot Nos. 53*, 56, 66, 114, 119, 122* & 127



First Floor



Front Elevation



Ground Floor

Key
 FF - FRIDGE/FREEZER B - BOILER DW - DISHWASHER WD - WASHER/DRYER AC - AIRING CUPBOARD * Plots 53 & 122 are handed to the plan drawn

Dimensions

	TOTAL AREA: 128 SQ M 1,378 SQ FT	
	Length	Width
Living/Dining Room	8.05m x 5.01m	26' 5" x 16' 5"
Kitchen	4.67m x 4.24m	15' 4" x 13' 11"
Bedroom 1	4.67m x 4.28m	15' 4" x 14' 0"
Bedroom 2	3.59m x 3.11m	11' 10" x 10' 2"
Bedroom 3	3.18m x 2.92m	10' 5" x 9' 7"
Bedroom 4	3.18m x 2.03m	10' 5" x 6' 8"



Four Bedroom Houses

Plot Nos. 121* & 128



Front Elevation



Ground Floor



First Floor

Key
 FF - FRIDGE/FREEZER B - BOILER DW - DISHWASHER WD - WASHER/DRYER AC - AIRING CUPBOARD * Plot 121 is handed to the plan drawn

Dimensions

	TOTAL AREA: 133.4 SQ M 1,436 SQ FT	
	Length	Width
Living Room	5.21m x 3.88m	17' 11" x 12' 9"
Kitchen	3.44m x 3.19m	11' 3" x 10' 5"
Dining Room	5.06m x 3.82m	16' 7" x 12' 6"
Bedroom 1	3.92m x 3.88m	12' 10" x 12' 9"
Bedroom 2	3.76m x 2.95m	12' 4" x 9' 8"
Bedroom 3	3.30m x 3.18m	10' 10" x 10' 5"
Bedroom 4	3.43m x 2.52m	11' 3" x 8' 3"



Four Bedroom Houses

Plot No. 65



Key

FF - FRIDGE/FREEZER B - BOILER DW - DISHWASHER WD - WASHER/DRYER AC - AIRING CUPBOARD

Dimensions TOTAL AREA: 184.3 SQ M 1,984 SQ FT

	Length	Width	Length	Width
Living Room	8.27m	x 3.69m	27' 1"	x 12' 1"
Kitchen/ Dining Room	7.30m	x 6.16m	23' 11"	x 20' 3"
Study	3.70m	x 2.05m	12' 2"	x 6' 9"
Bedroom 1	5.16m	x 4.81m	16' 11"	x 15' 9"
Bedroom 2	4.55m	x 3.27m	14' 11"	x 10' 9"
Bedroom 3	3.72m	x 3.40m	12' 3"	x 11' 2"
Bedroom 4	3.70m	x 2.61m	12' 2"	x 8' 7"



A home to be proud of

Specification

Kitchen

- Contemporary kitchen with chrome handles, under unit lighting, soft close and eco bin**
- Laminate worktops with upstand
- Stainless steel sink with chrome mixer tap
- Zanussi gas hob with glass splashback and stainless steel cooker hood
- Zanussi integrated single electric oven
- Zanussi integrated fridge freezer
- Zanussi integrated dishwasher
- Zanussi integrated washer/dryer when in kitchen
- Zanussi freestanding washer/dryer when in utility

Cloakroom

- Contemporary Roca white toilet with soft close seat and pedestal basin
- Roca mixer tap to basin
- Splashback tiling to basin

Bathroom & Ensuite

- Contemporary Roca sanitaryware including white toilet with soft close seat and pedestal basin
- Roca mixer tap to basin
- Thermostatic bath/shower mixer over bath with bath screen
- Thermostatic shower valve to ensuite
- White Mira shower tray and shower enclosure with chrome frame
- Grey ceramic tiles, full height to bath and shower enclosure with splashback tiling to basin
- Extractor fan
- Mirrored cabinet to bathroom
- Mirror to ensuite

Flooring

- Wood effect laminate flooring to ground floor
- Coordinating floor tiles to bathroom and ensuite
- Carpet to stairs, landing and bedrooms



Images depict a typical Legal & General Affordable Homes property

Heating & Electrical

- Vaillant gas boiler
- Photovoltaic roof panels to selected plots*
- Contemporary white radiators
- Chrome heated towel rail to bathroom and ensuite
- LED downlights to ground floor rooms
- Pendant light fitting to bedrooms
- Chrome sockets and switches throughout
- Smoke, heat and carbon monoxide detectors
- TV point in living room
- Telephone point in living room
- Shaver socket to bathroom and ensuite
- Light to front and rear elevations
- Door bell

General

- UPVC double glazed white windows
- Internal walls and woodwork painted white
- White internal panel doors with satin chrome brassware
- 10 year NHBC building warranty

External

- 1 bedroom houses; one parking bay allocated
- 2 and 3 bedroom houses; two parking bays plus garage to selected plots
- 4 bedroom houses; three parking bays to plot 54, minimum two parking bays and a garage to all other 4 bedroom plots

- Garage to include power and lighting when located within the plot curtilage
- Turf to rear garden
- 1.8m timber fencing to garden
- Outside tap
- Paved patio area
- Garden storage

We take every care to ensure that the correct information is provided. The company employs a policy of continuous improvement and reserves the right to alter or amend the specification at any time and is subject to change. Details are correct at the time of going to print.

*please speak to the Sales Team for details of plots with PV panels
**please speak to sales team for plot specific finishes

Shared Ownership Explained

Your essential guide to all things Shared Ownership with Legal & General

Shared Ownership could be your step onto the property ladder. This home ownership scheme allows you to buy a share in your home and rent the remaining share. Over time, you can buy more shares in your home until you own the full 100%.

How does Shared Ownership work?

At Broadland Fields, you can buy an initial share of between 30% to 75% of the home's full market value, and pay a subsidised rent on the remainder. You may purchase further shares (up to 100%) as your circumstances change.

Your annual rent is charged at 2.75% of the residual value of your home, which is reviewed annually each April. This is capped at RPI (Retail Price Index) from September of the previous year + 0.5%.

Am I eligible for Shared Ownership?

If you earn or have a household income up to a maximum of £80,000 per annum, you could be eligible. You can also use Shared Ownership to buy alone or with another person as long as your joint incomes don't exceed the maximum earnings bracket.

Some developments have eligibility or prioritisation requirements around where you live and/or work. Please speak to our Sales Consultant for further information.

What other charges will be payable?

Your home will be subject to a management fee - this is a fee payable monthly to cover the administrative costs of Legal & General Affordable Homes and our Management Provider. You will also be charged for the Buildings Insurance required to cover your home.

Finally, all homes pay an Estate Charge which contributes to the maintenance of the wider estate, play areas or unadopted roads etc.

Can I buy additional shares in the property?

Yes you can. This is known as 'staircasing'. You can staircase in annual 1% increments during the first 15 years of your lease, this is calculated based on the initial purchase price adjusted in line with HPI (House Price Index), or you can staircase in larger proportions (over 5%) with a RICS valuation. You can staircase to 100% ownership.

Is it cheaper than renting?

Shared Ownership can be cheaper than renting privately as the mortgage cost and low rent usually add up to less than the equivalent rental payments to a landlord.

What if I already have a home?

If you already own a property you would need to have confirmed the sale of your home when you apply to buy via Shared Ownership.

Your application would be assessed based on your housing need for you to be considered for Shared Ownership.

Will I need a deposit?

Yes you still need a deposit, but only on the percentage of the property you are buying. Mortgage deposits are typically 5% or 10% of the share value.

For more frequently answered questions go to www.landgah.com/faq

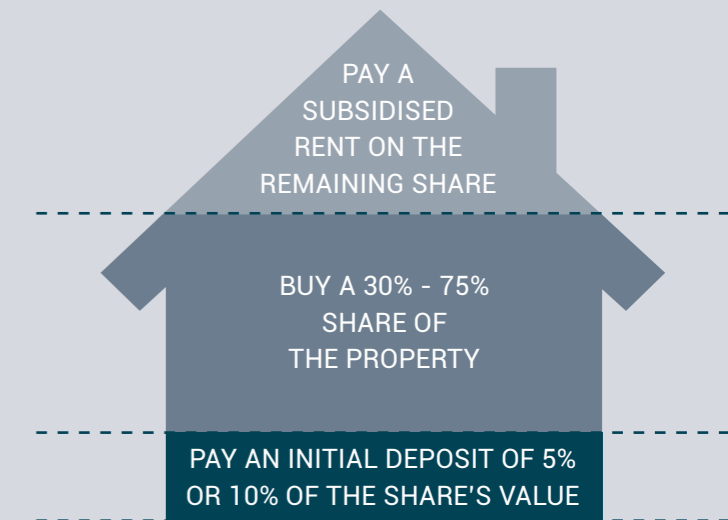
We're here to help

If you're interested in viewing or applying for a property, or if you simply have some more questions around Shared Ownership, visit

www.landgah.com



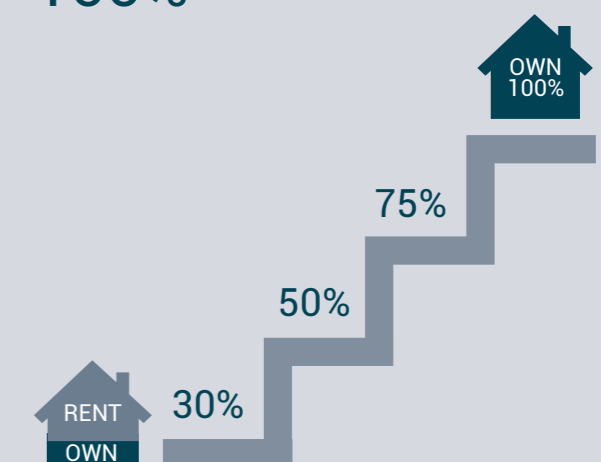
Breakdown example of a new home at Broadland Fields



For a full breakdown of costs, please speak to one of our Sales Consultants.

Buying more shares

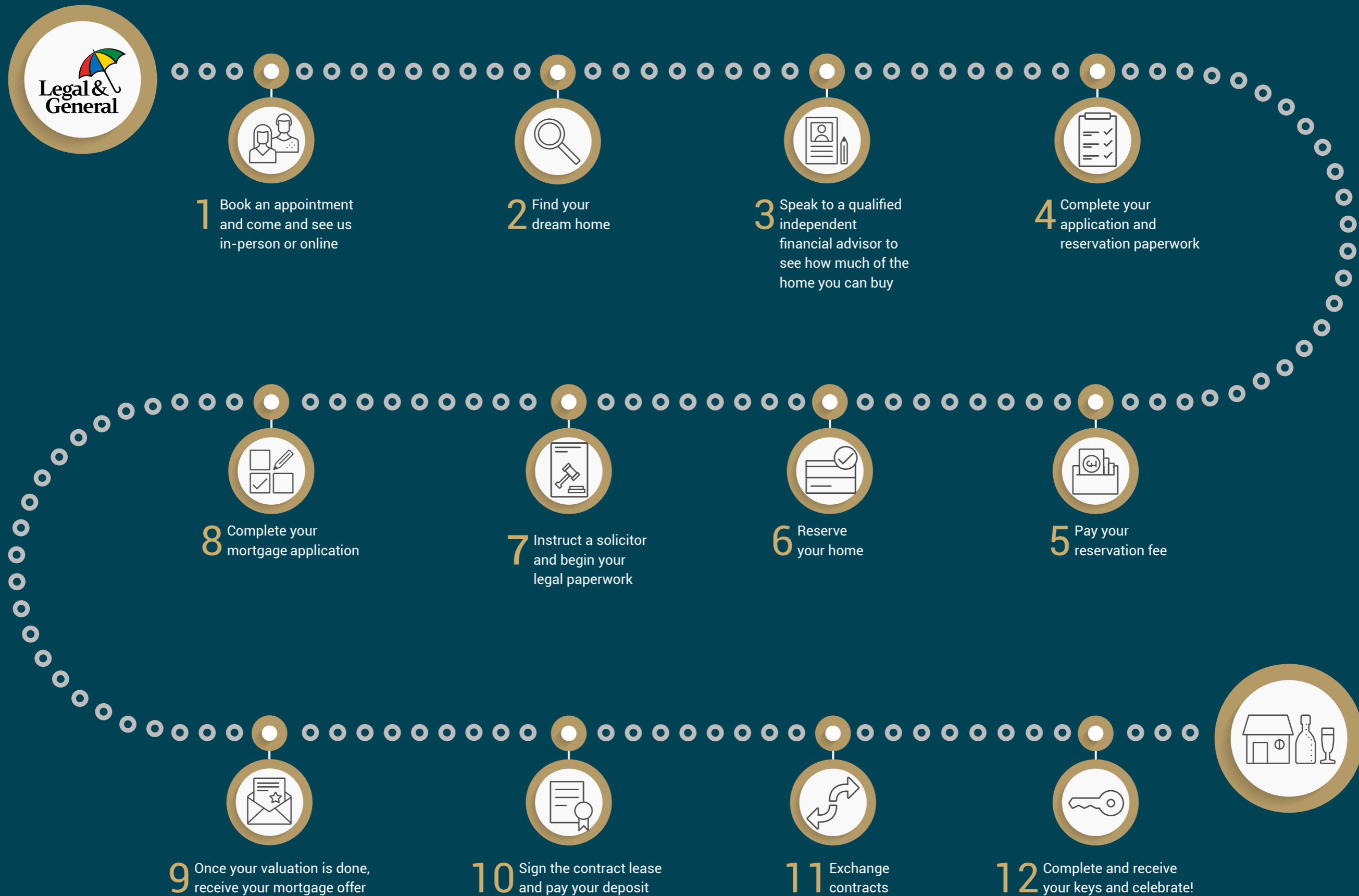
STAIRCASE YOUR WAY TO OWNING 100%



When you buy more shares in your home, your home is re-valued and you buy the shares at the current market value, at the time you are buying the shares. You can staircase up to **100% ownership**.

A step by step guide to owning your own home

Find a Legal & General Shared Ownership property you'd like to buy and follow our step by step guide to turn your home-buying dreams into reality.





People come first. It's been the Legal & General way for almost 200 years.

Legal & General began in a coffee house on London's Chancery Lane back in 1836. Almost 200 years later we are investing in new homes for all ages, social groups and housing tenures.

The shortage of housing in the UK, and high deposits required to buy a property outright, mean many people can't afford a new home. Our mission is to better people's lives by offering opportunities to those who need a helping hand. Whether it's a first-time buyer, young couple or growing family, it's important that everyone has a safe and secure space to call their own.

Our mission is to become the leading private affordable housing provider in the UK and to make a positive difference to the affordable housing sector. As a company, we have never stopped moving forward, but our position of being a byword for reliability, integrity and trust, is one we will never move from. That's why our key principles underpin everything we do:



Quality We aim to bring you the best possible experience in every aspect of your new home. That's in location, design, finishes, environment and, above all, value.



Customer Service We're committed to providing first-class customer service, from the moment you arrive to when you open the door of your new home.



Sustainability We work to minimise the environmental impact of what we do. That means reducing carbon emissions, using renewable materials and following sustainable design and building processes.

Broadland Fields

POPPY WAY, NORWICH NR13 5HB

Call to book an appointment

 01603 385 372

 landgah.com/broadland-fields



We take every care to ensure that the correct information is given. We hope you find it useful, however complete accuracy is not guaranteed and the information is expressly excluded from any contract. The floor plans provided are intended to only give a general indication of the proposed floor layout and are not drawn to scale. Measurements are given to the widest point, are approximate and are given as a guide only. All measures and areas may vary within a tolerance of 5%. Do not use these measurements for appliance spaces or items of furniture. Kitchen, utility layouts and bathroom may differ to build. Unless specifically incorporated in writing into the sales contract the specification is not intended to form part of any contract or warranty. We would like to point out that the computer-generated images, floor plans, sizes, specification and any other layouts are for guidance only. LGAH-BF-V200423.