

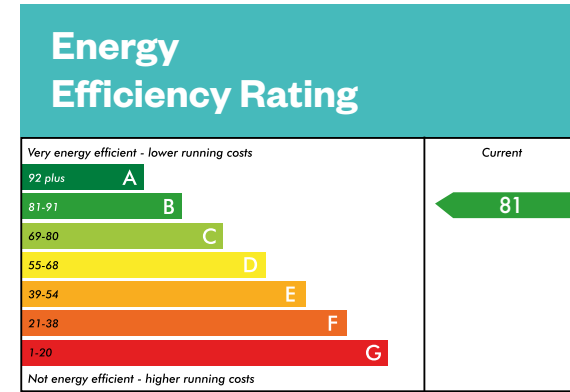
# The Bargower

4 bedroom detached home

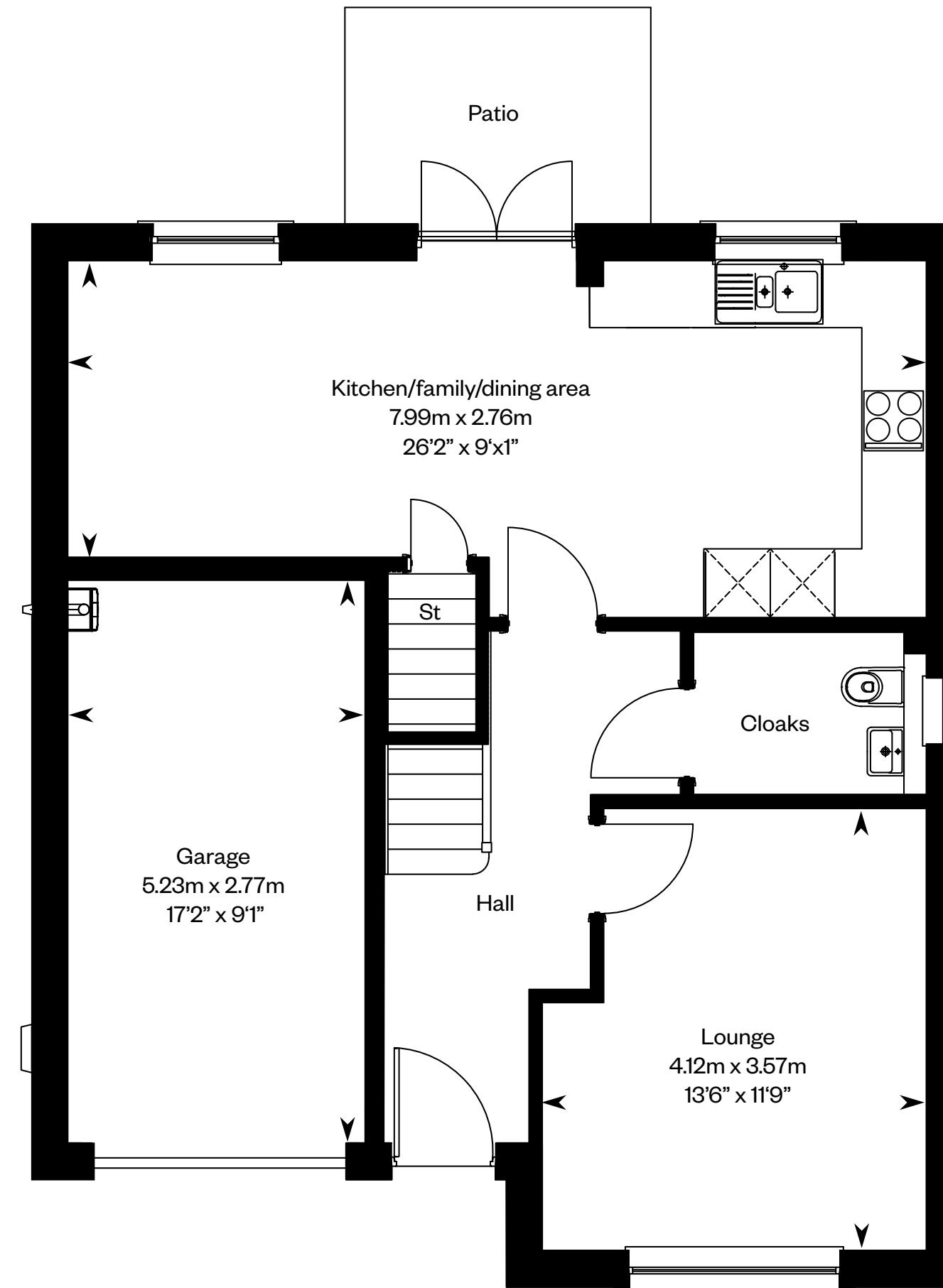


# The Bargower

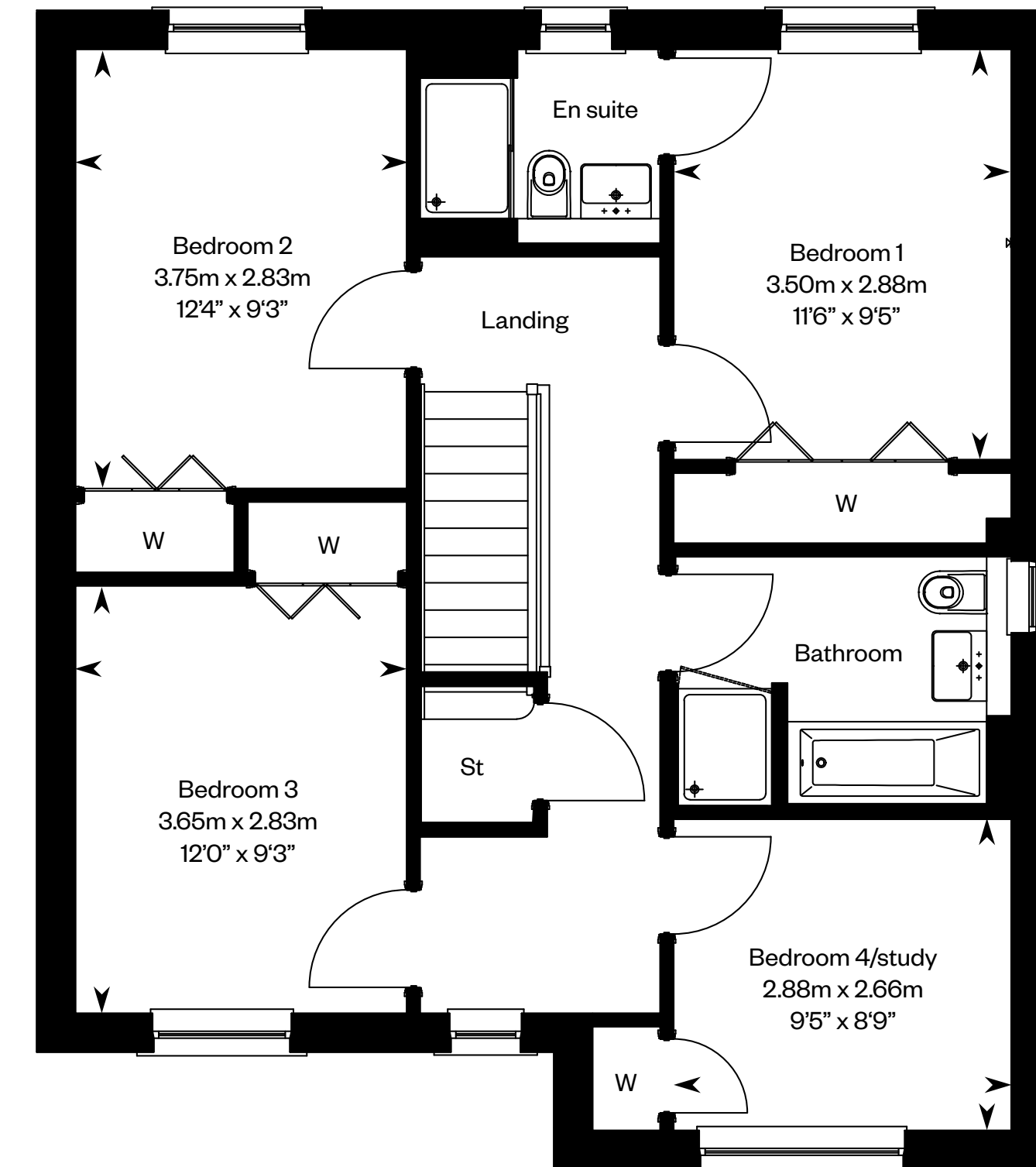
Plots 10, 11 – as shown



This is a Predicted Energy Assessment for properties that are incomplete. Once the property is completed, this rating will be updated and an official Energy Performance Certificate will be created for the property. The figure shown is the lowest predicted assessment. Please speak to a Sales Consultant for plot specific details.



Ground floor



First floor

Please ask your Sales Consultant for further details. ST: Store cupboard. W: Wardrobe.

IMPORTANT NOTICE TO CUSTOMERS: The Consumer Protection from Unfair Trading Regulations 2008. Cala Homes (West) Limited operates a policy of continual product development and the specifications outlined in this brochure are indicative only. The computer generated images and photographs do not necessarily represent the actual finishings/elevation or treatments, landscaping, furnishings and fittings at this development. Information contained is accurate at date of publication on 01.09.22. See the main brochure for the full Consumer Protection statement.

# The Brodick

4 bedroom detached home

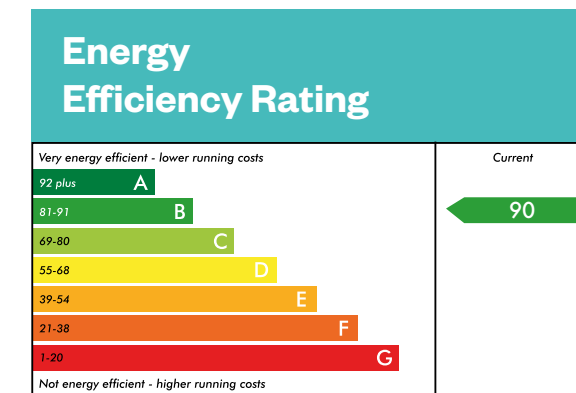


Computer generated image - The Brodick

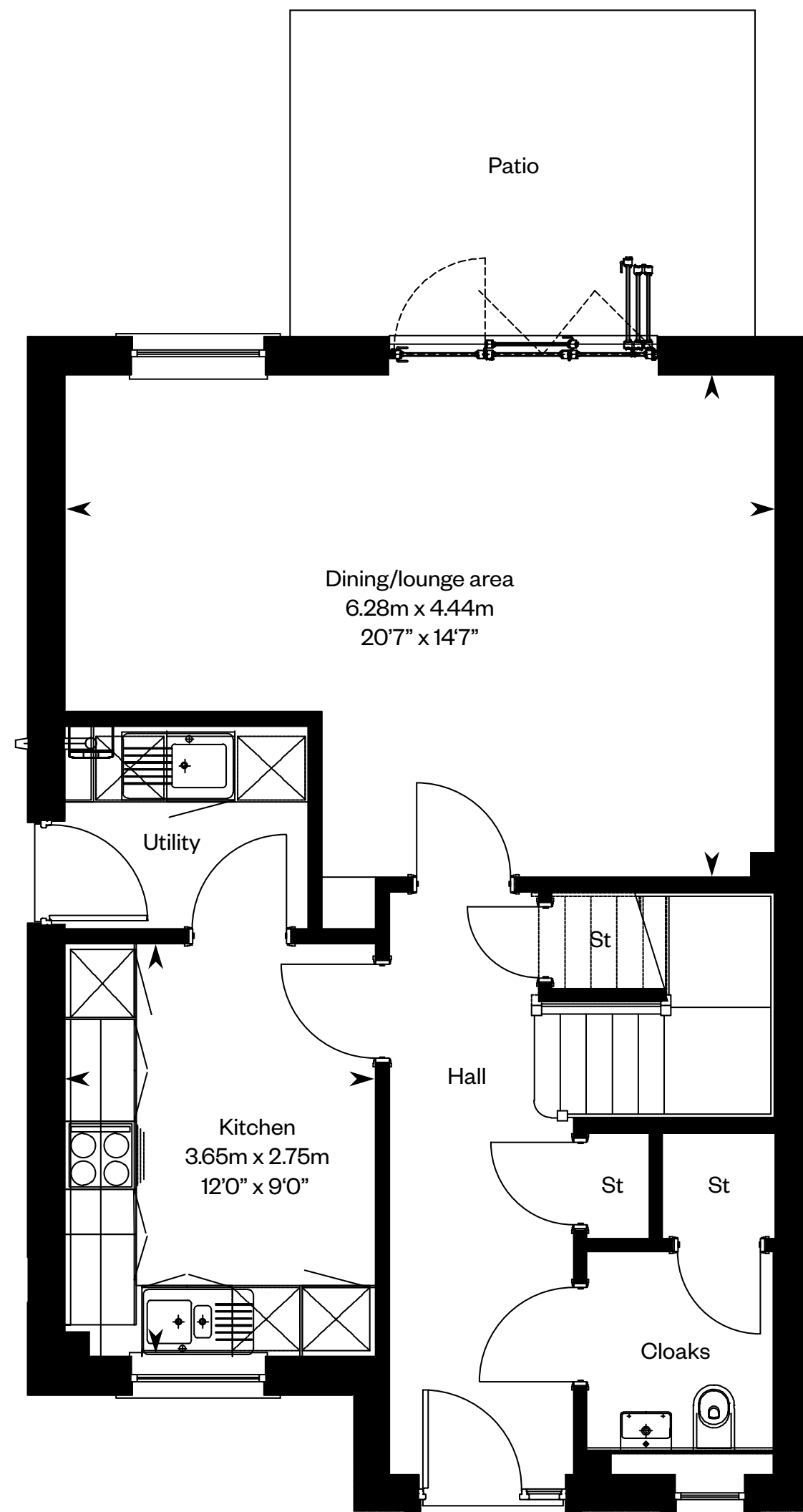
# The Brodick

Plots 42, 43, 56, 57 – as shown

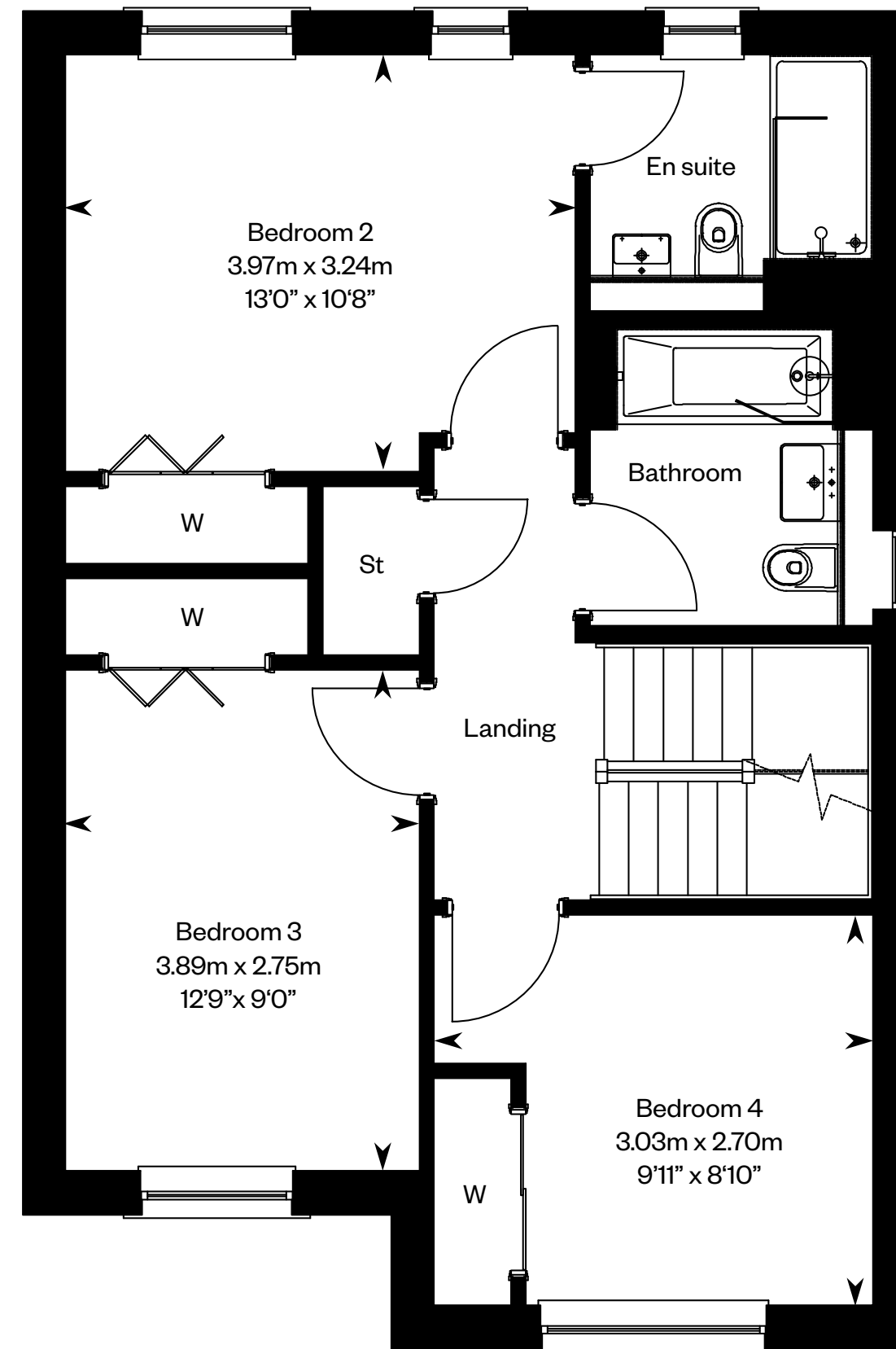
Plots 3, 28 – handed



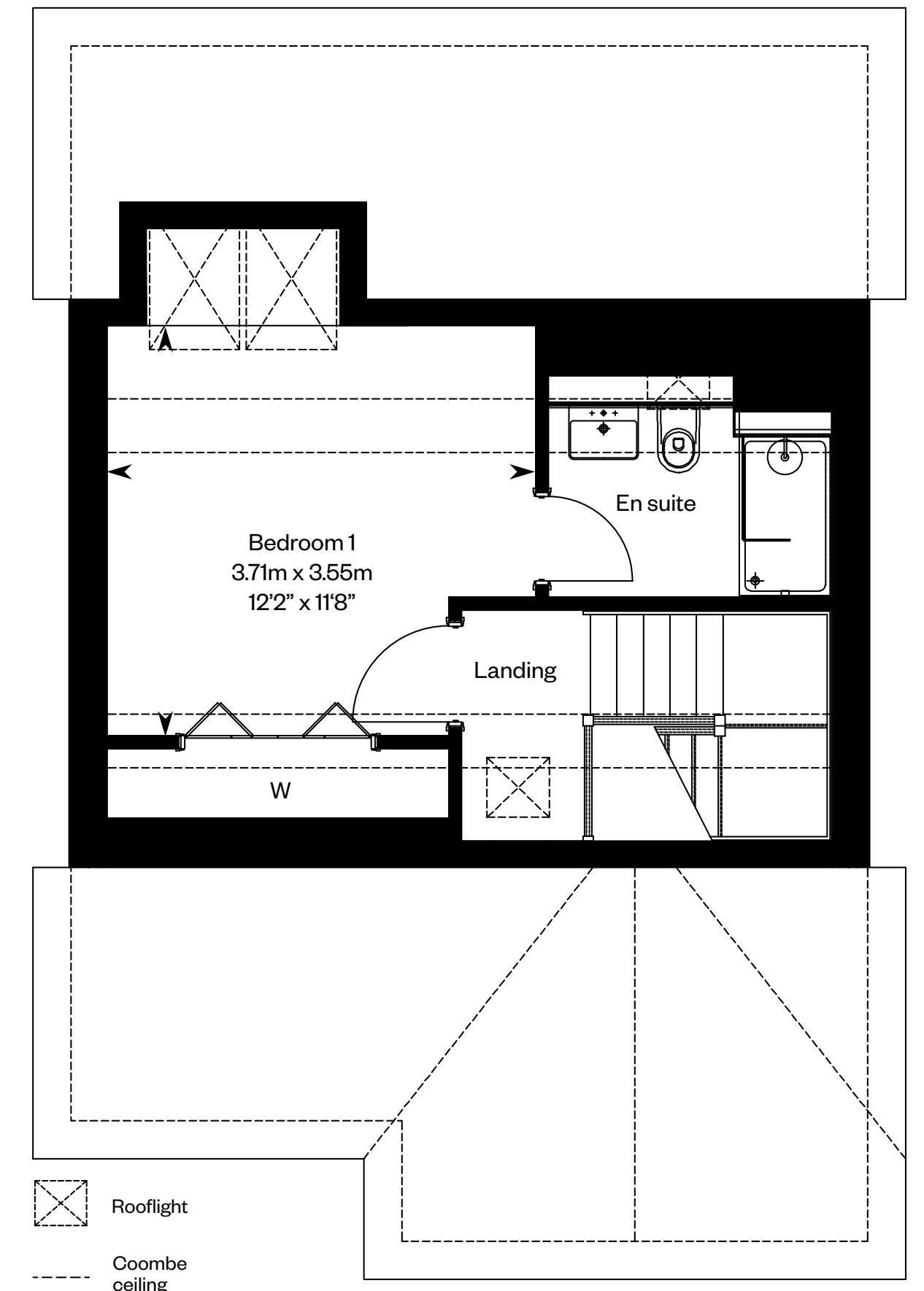
This is a Predicted Energy Assessment for properties that are incomplete. Once the property is completed, this rating will be updated and an official Energy Performance Certificate will be created for the property. The figure shown is the lowest predicted assessment. Please speak to a Sales Consultant for plot specific details.



Ground floor



First floor



Second floor

Please ask your Sales Consultant for further details. ST: Store cupboard. W: Wardrobe.

IMPORTANT NOTICE TO CUSTOMERS: The Consumer Protection from Unfair Trading Regulations 2008. Cala Homes (West) Limited operates a policy of continual product development and the specifications outlined in this brochure are indicative only. The computer generated images and photographs do not necessarily represent the actual finishings/elevation or treatments, landscaping, furnishings and fittings at this development. Information contained is accurate at date of publication on 01.09.22. See the main brochure for the full Consumer Protection statement.

# The Cleland

4 bedroom detached home

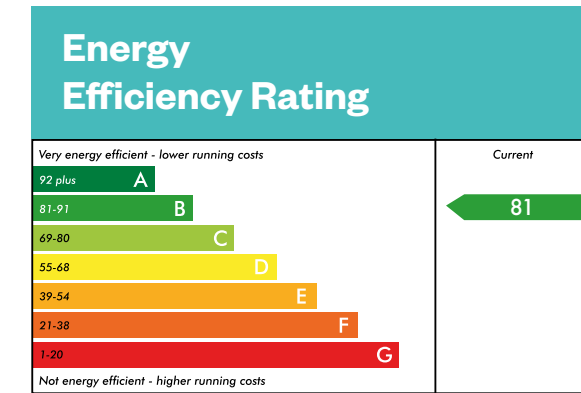


Computer generated image - The Cleland

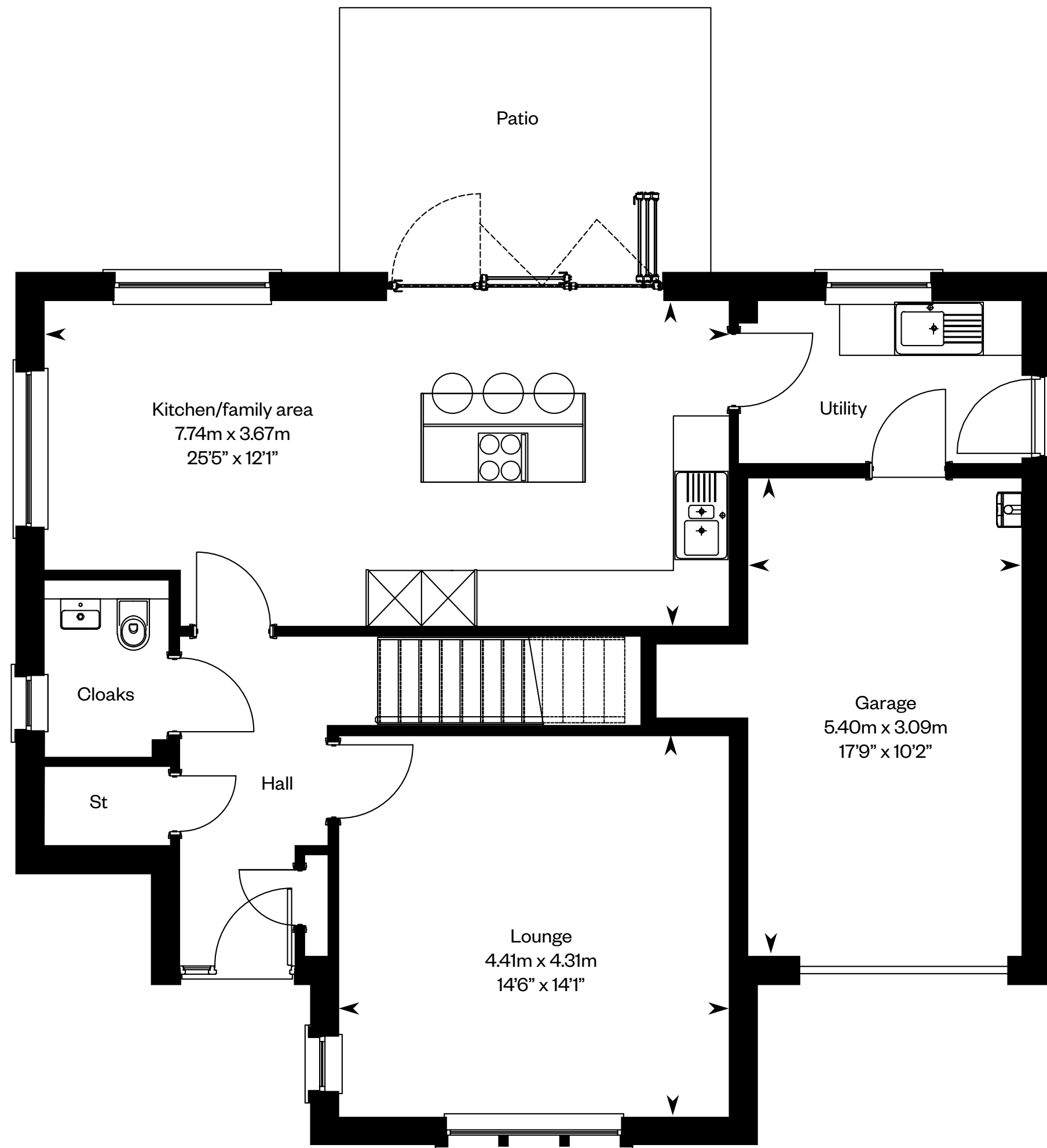
# The Cleland

Plot 51 – as shown

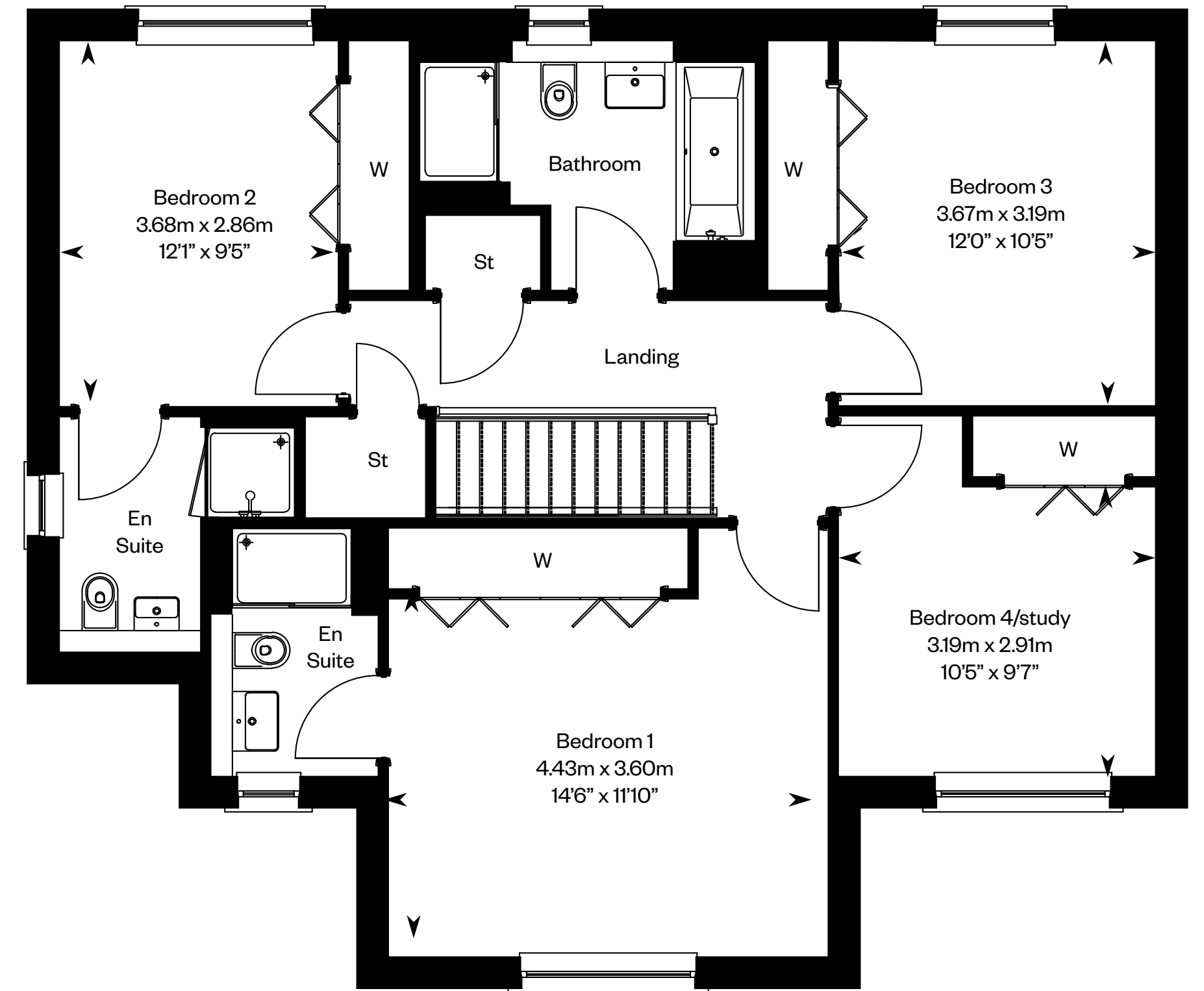
Plot 12 – handed



This is a Predicted Energy Assessment for properties that are incomplete. Once the property is completed, this rating will be updated and an official Energy Performance Certificate will be created for the property. The figure shown is the lowest predicted assessment. Please speak to a Sales Consultant for plot specific details.



Ground floor



First floor

Please ask your Sales Consultant for further details. ST: Store cupboard. W: Wardrobe.

IMPORTANT NOTICE TO CUSTOMERS: The Consumer Protection from Unfair Trading Regulations 2008. Cala Homes (West) Limited operates a policy of continual product development and the specifications outlined in this brochure are indicative only. The computer generated images and photographs do not necessarily represent the actual finishings/elevation or treatments, landscaping, furnishings and fittings at this development. Information contained is accurate at date of publication on 01.09.22. See the main brochure for the full Consumer Protection statement.

# The Crichton

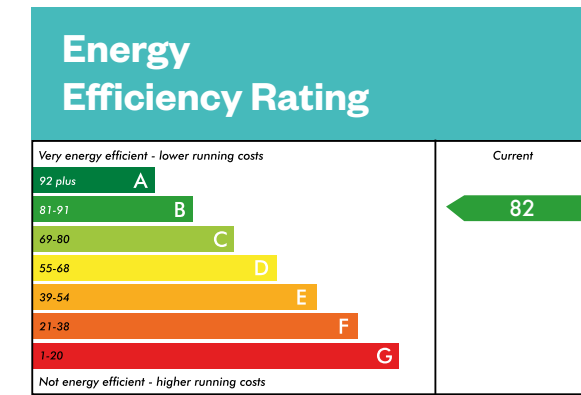
5 bedroom detached home



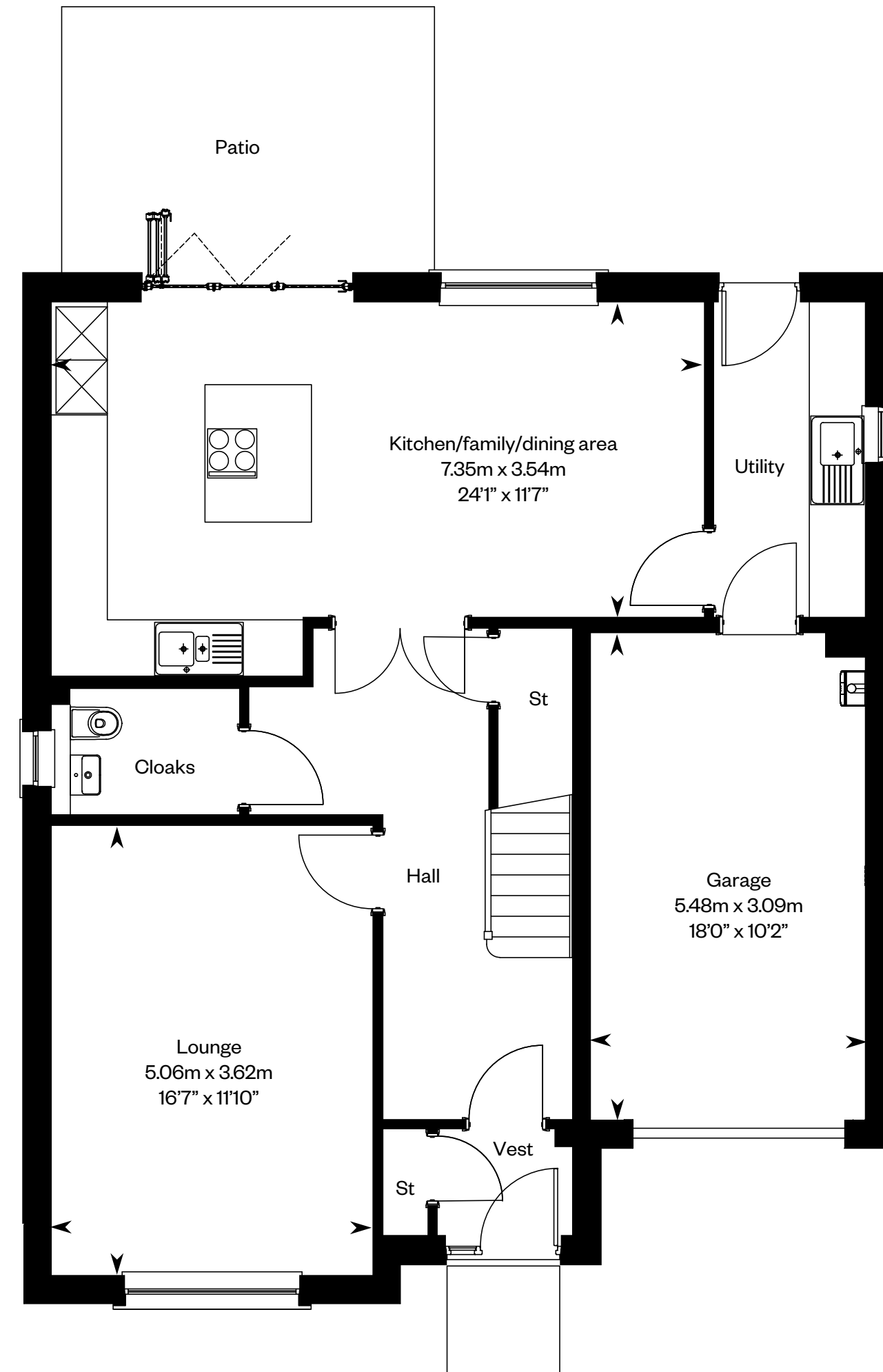
Computer generated image - The Crichton

# The Crichton

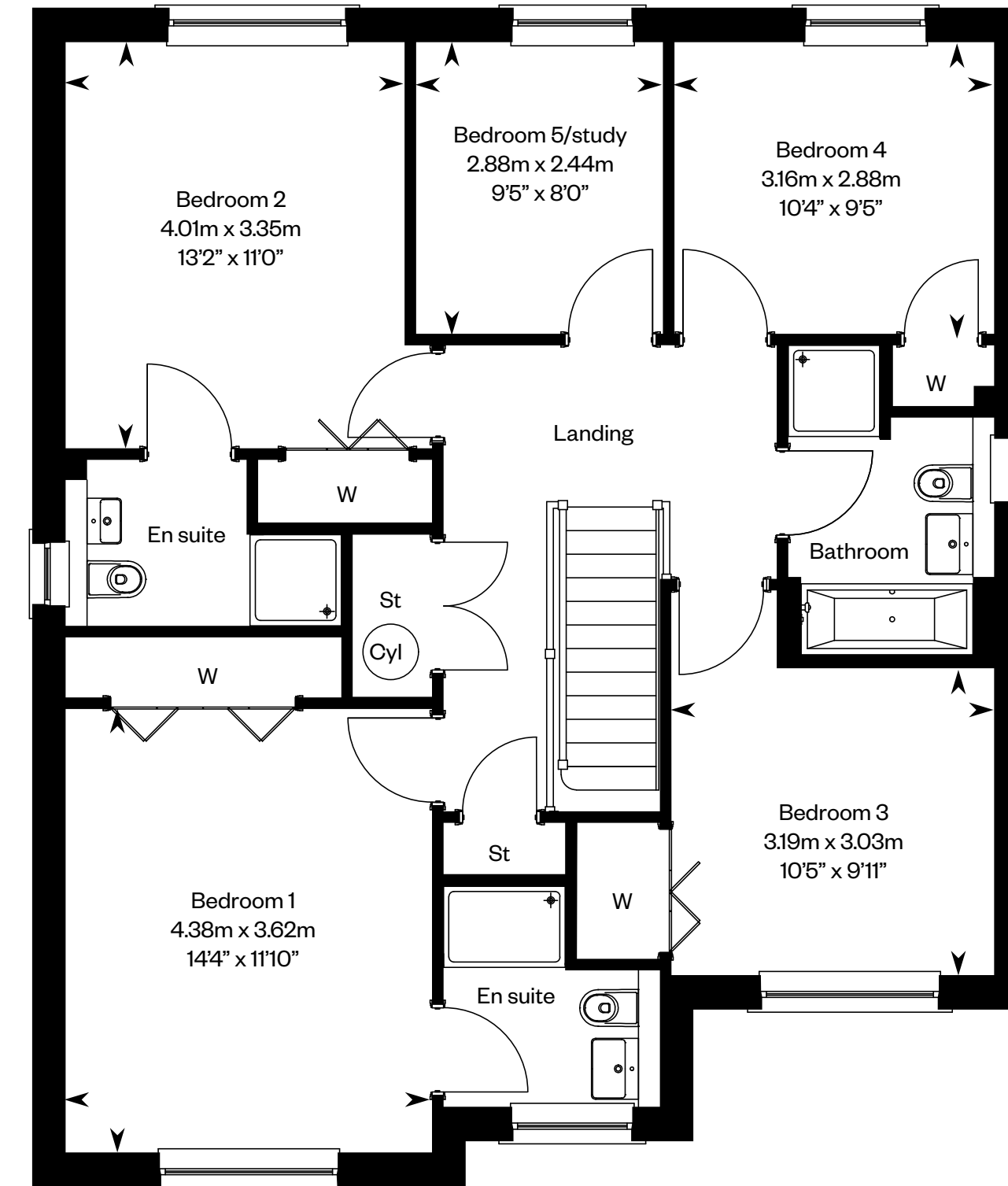
Plots 23, 36 – as shown



This is a Predicted Energy Assessment for properties that are incomplete. Once the property is completed, this rating will be updated and an official Energy Performance Certificate will be created for the property. The figure shown is the lowest predicted assessment. Please speak to a Sales Consultant for plot specific details.



Ground floor



First floor

Please ask your Sales Consultant for further details. ST: Store cupboard. W: Wardrobe.

**IMPORTANT NOTICE TO CUSTOMERS:** The Consumer Protection from Unfair Trading Regulations 2008. Cala Homes (West) Limited operates a policy of continual product development and the specifications outlined in this brochure are indicative only. The computer generated images and photographs do not necessarily represent the actual finishings/elevation or treatments, landscaping, furnishings and fittings at this development. Information contained is accurate at date of publication on 01.09.22. See the main brochure for the full Consumer Protection statement.



# The Darroch

5 bedroom detached home

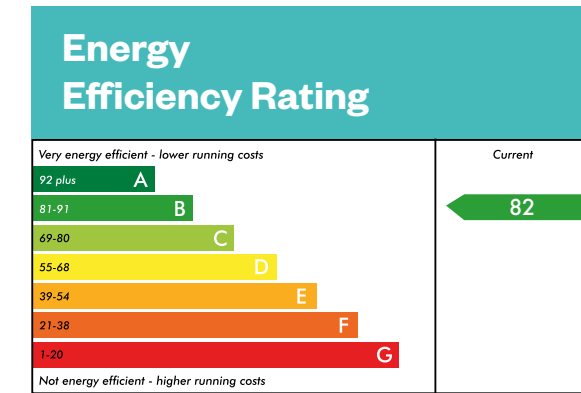


Computer generated image - The Darroch

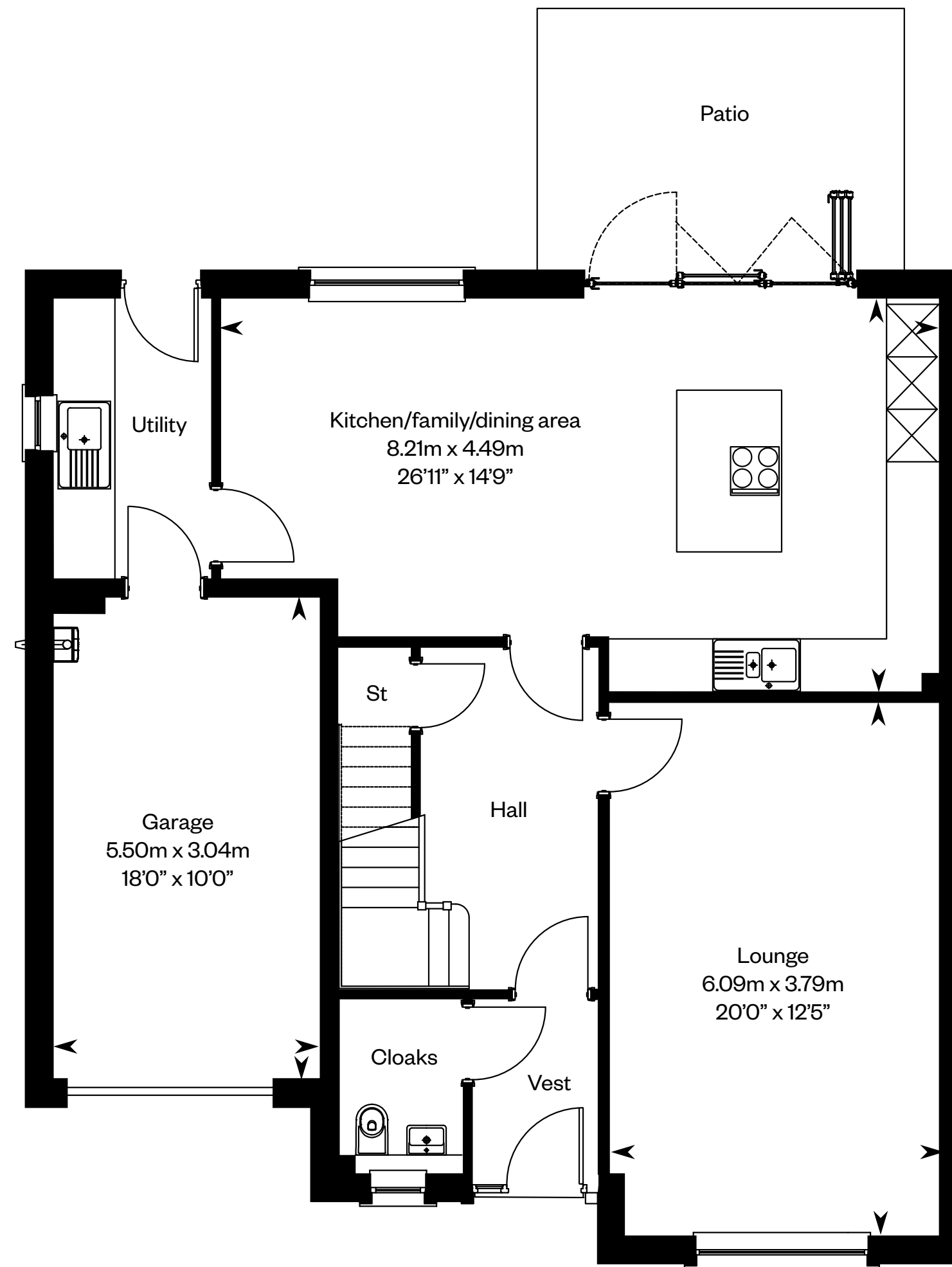
# The Darroch

Plots 9, 31, 35 – as shown

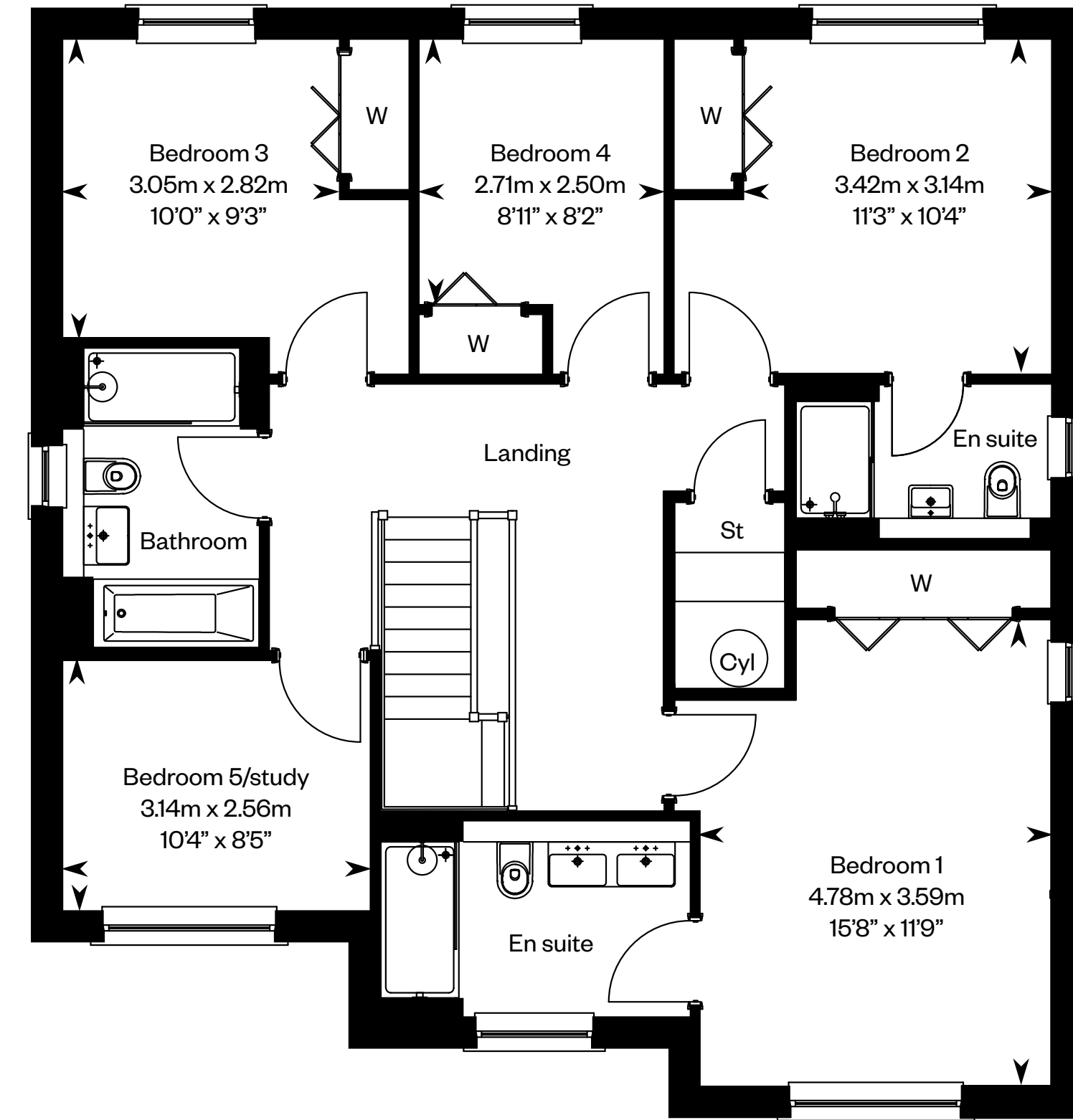
Plots 37, 45 – handed



This is a Predicted Energy Assessment for properties that are incomplete. Once the property is completed, this rating will be updated and an official Energy Performance Certificate will be created for the property. The figure shown is the lowest predicted assessment. Please speak to a Sales Consultant for plot specific details.



Ground floor



First floor

Please ask your Sales Consultant for further details. ST: Store cupboard. W: Wardrobe.

IMPORTANT NOTICE TO CUSTOMERS: The Consumer Protection from Unfair Trading Regulations 2008. Cala Homes (West) Limited operates a policy of continual product development and the specifications outlined in this brochure are indicative only. The computer generated images and photographs do not necessarily represent the actual finishings/elevation or treatments, landscaping, furnishings and fittings at this development. Information contained is accurate at date of publication on 01.09.22. See the main brochure for the full Consumer Protection statement.

# The Evan

5 bedroom detached home with study



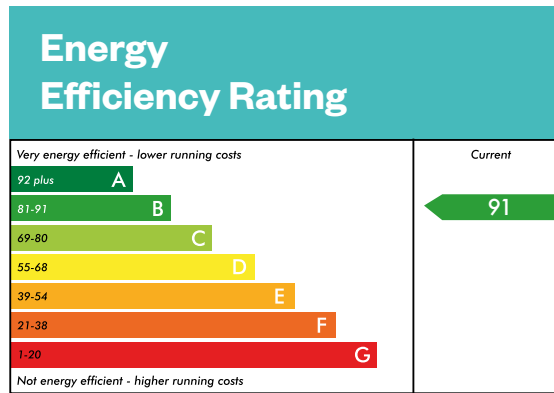
PV panels are subject to change

Computer generated image - The Evan

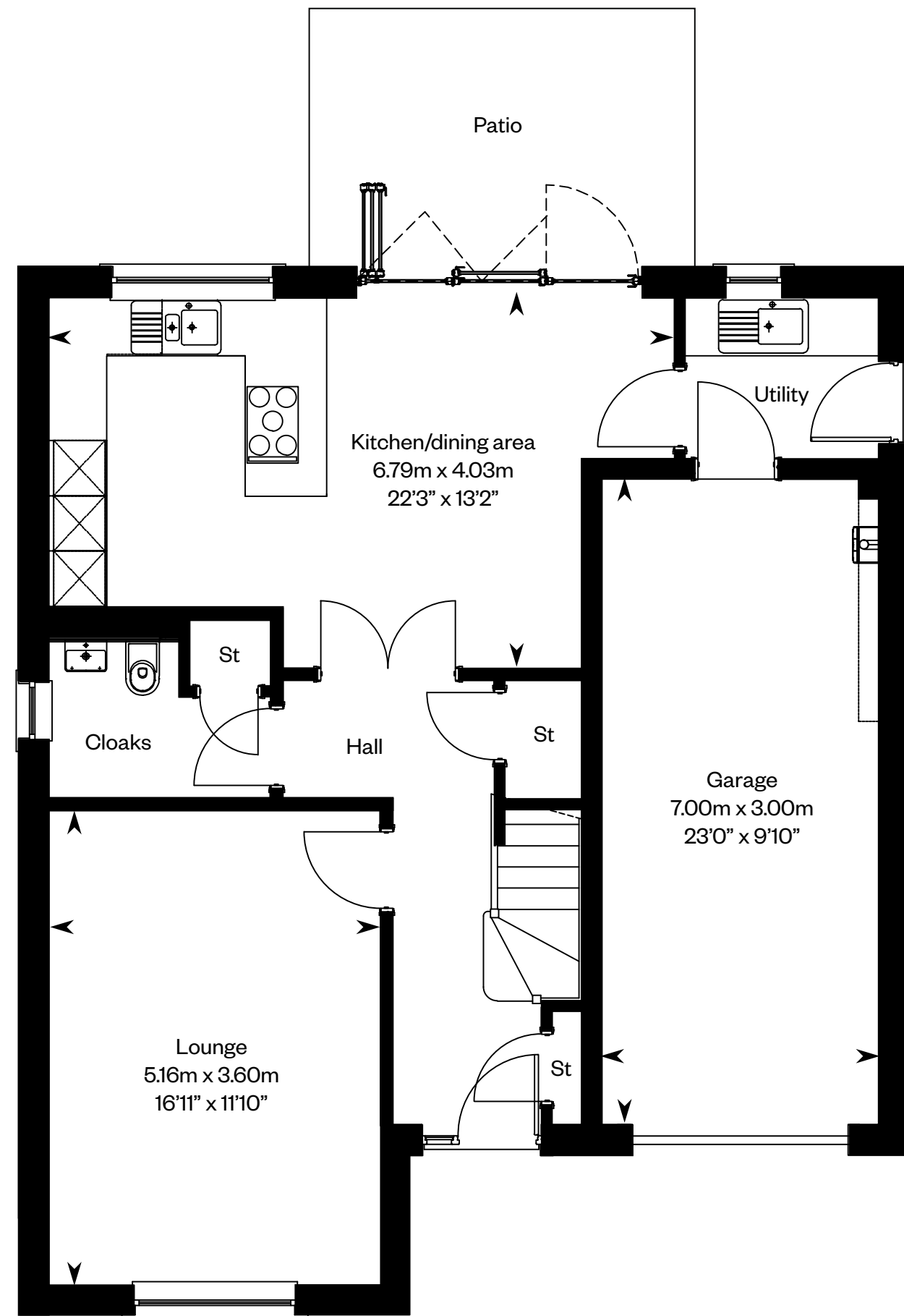
# The Evan

Plots 2, 22, 29 – as shown

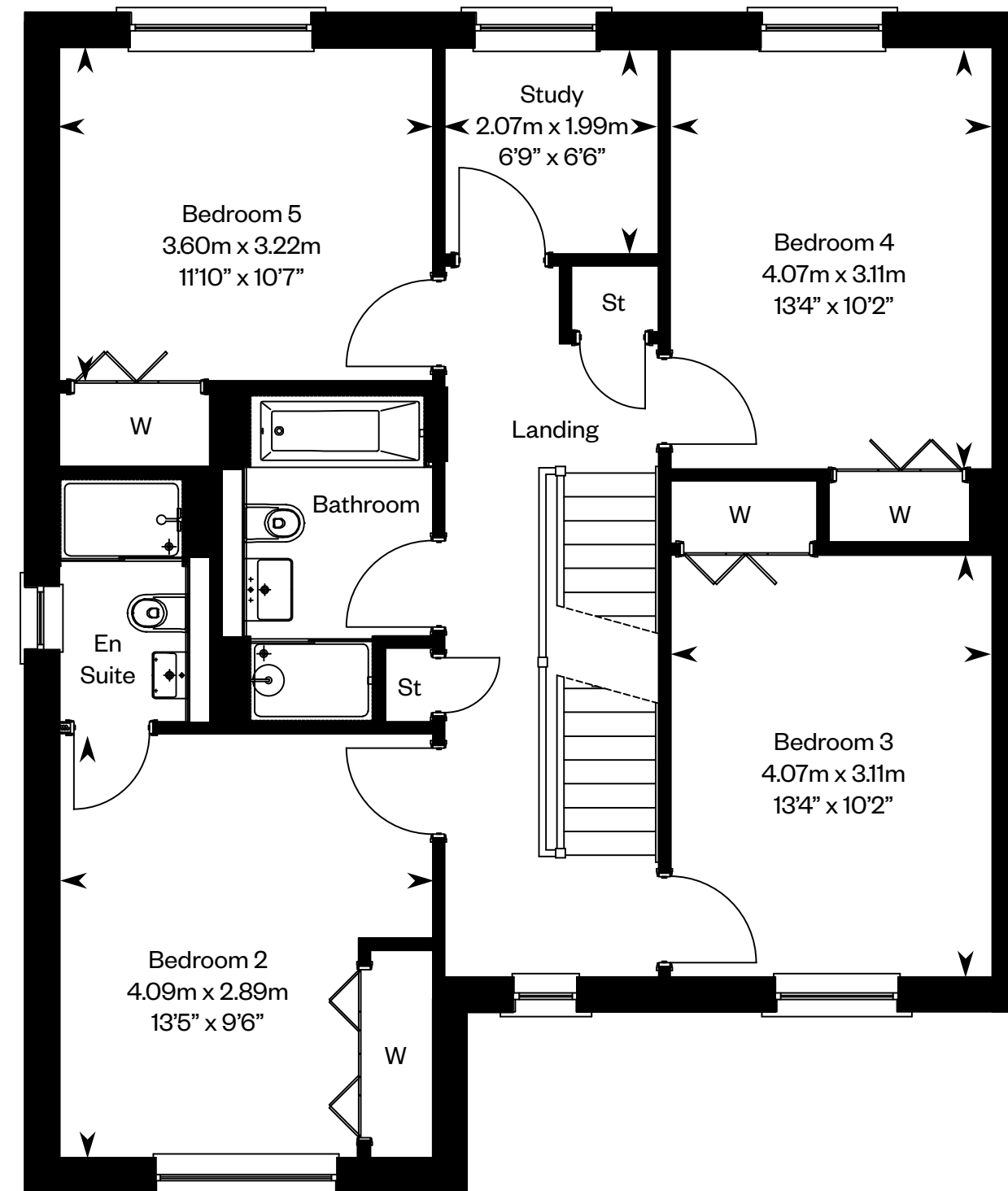
Plots 44, 58 – handed



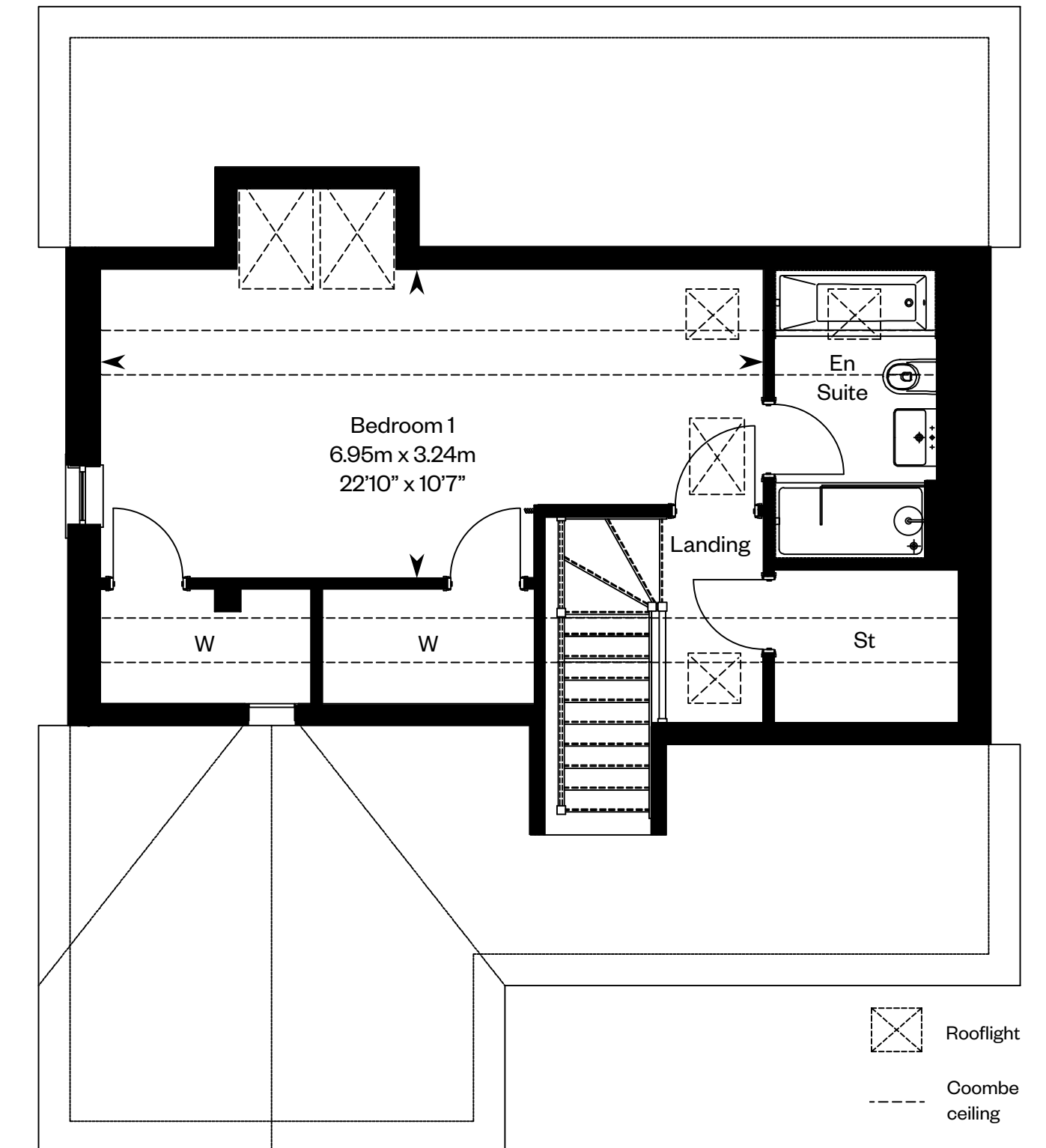
This is a Predicted Energy Assessment for properties that are incomplete. Once the property is completed, this rating will be updated and an official Energy Performance Certificate will be created for the property. The figure shown is the lowest predicted assessment. Please speak to a Sales Consultant for plot specific details.



Ground floor



First floor



Second floor

Please Note: The PV panels positioning are subject to change. Please ask your Sales Consultant for further details. ST: Store cupboard. W: Wardrobe.

IMPORTANT NOTICE TO CUSTOMERS: The Consumer Protection from Unfair Trading Regulations 2008. Cala Homes (West) Limited operates a policy of continual product development and the specifications outlined in this brochure are indicative only. The computer generated images and photographs do not necessarily represent the actual finishings/elevation or treatments, landscaping, furnishings and fittings at this development. Information contained is accurate at date of publication on 01.09.22. See the main brochure for the full Consumer Protection statement.

# The Garvie

5 bedroom detached home

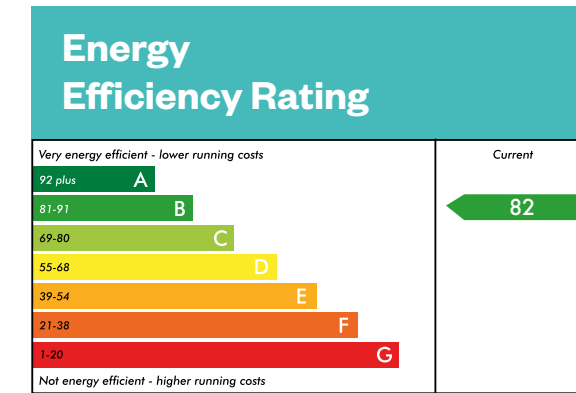


Computer generated image - The Garvie

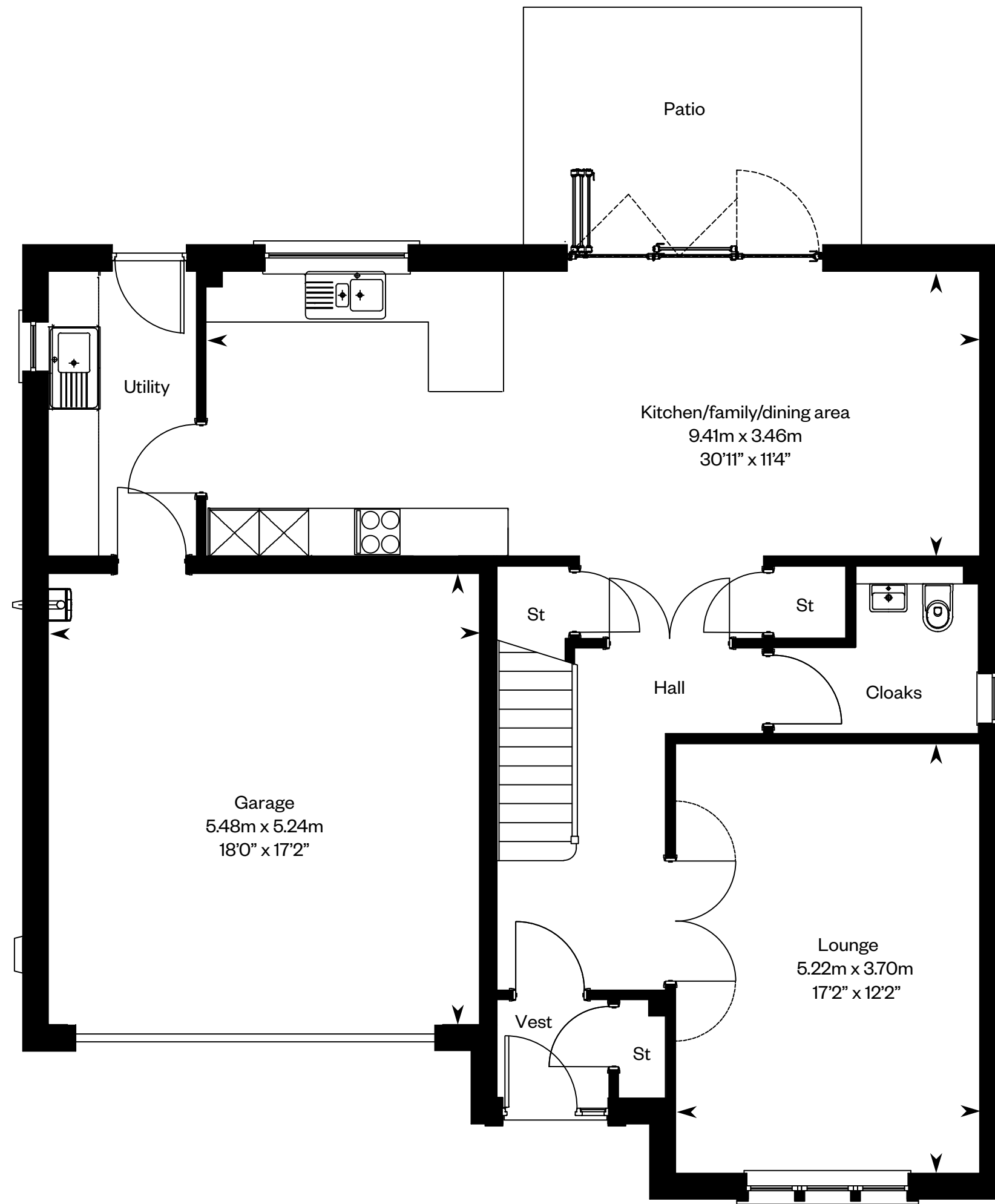
# The Garvie

Plots 27, 34, 52 – as shown

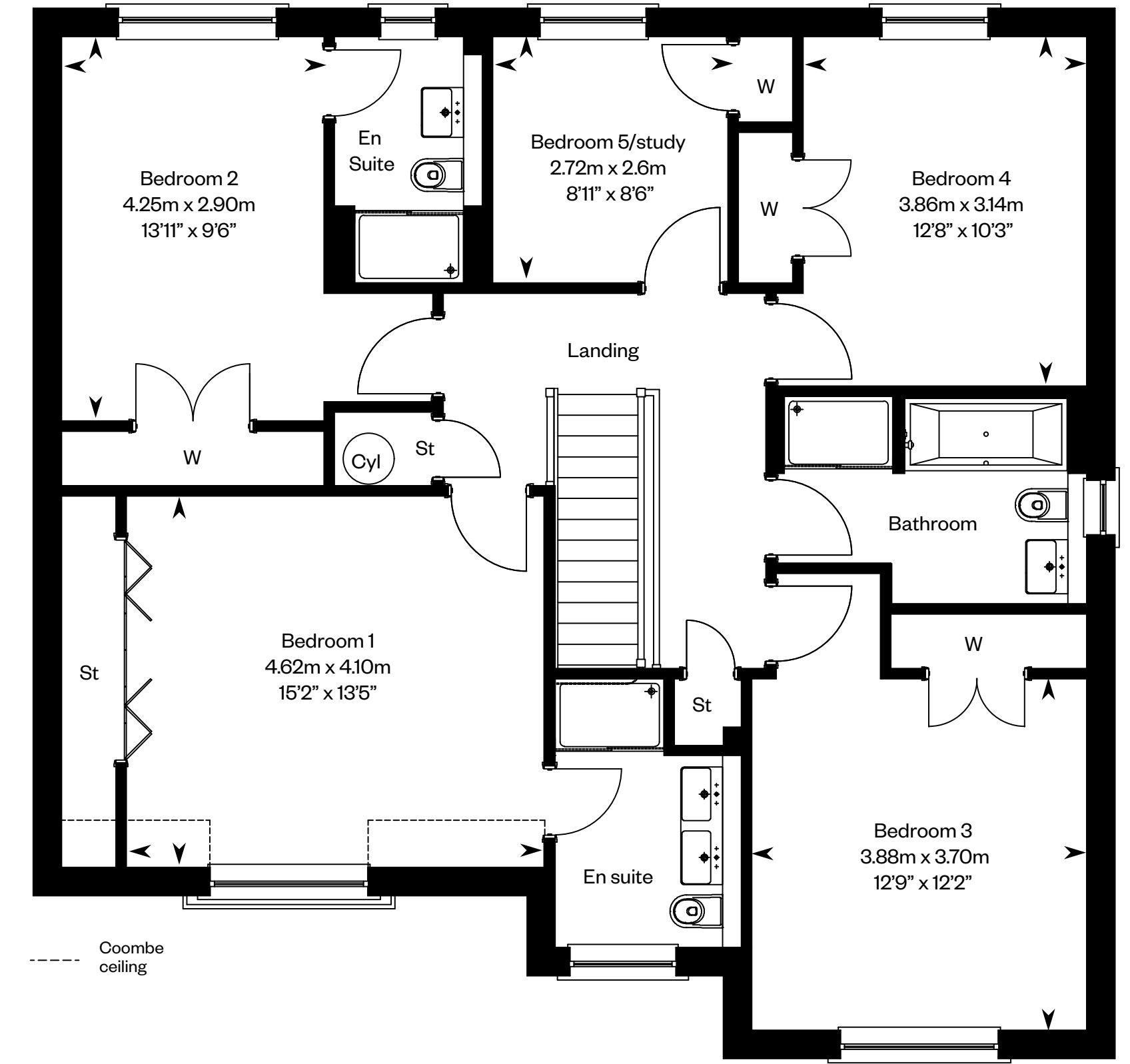
Plots 24, 46, 53 – handed



This is a Predicted Energy Assessment for properties that are incomplete. Once the property is completed, this rating will be updated and an official Energy Performance Certificate will be created for the property. The figure shown is the lowest predicted assessment. Please speak to a Sales Consultant for plot specific details.



Ground floor



First floor

Please ask your Sales Consultant for further details. ST: Store cupboard. W: Wardrobe.

IMPORTANT NOTICE TO CUSTOMERS: The Consumer Protection from Unfair Trading Regulations 2008. Cala Homes (West) Limited operates a policy of continual product development and the specifications outlined in this brochure are indicative only. The computer generated images and photographs do not necessarily represent the actual finishings/elevation or treatments, landscaping, furnishings and fittings at this development. Information contained is accurate at date of publication on 01.09.22. See the main brochure for the full Consumer Protection statement.

# The Gordon SE

5 bedroom detached home

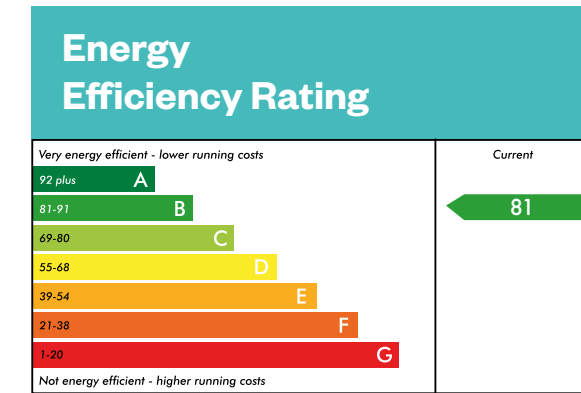


Computer generated image - The Gordon SE

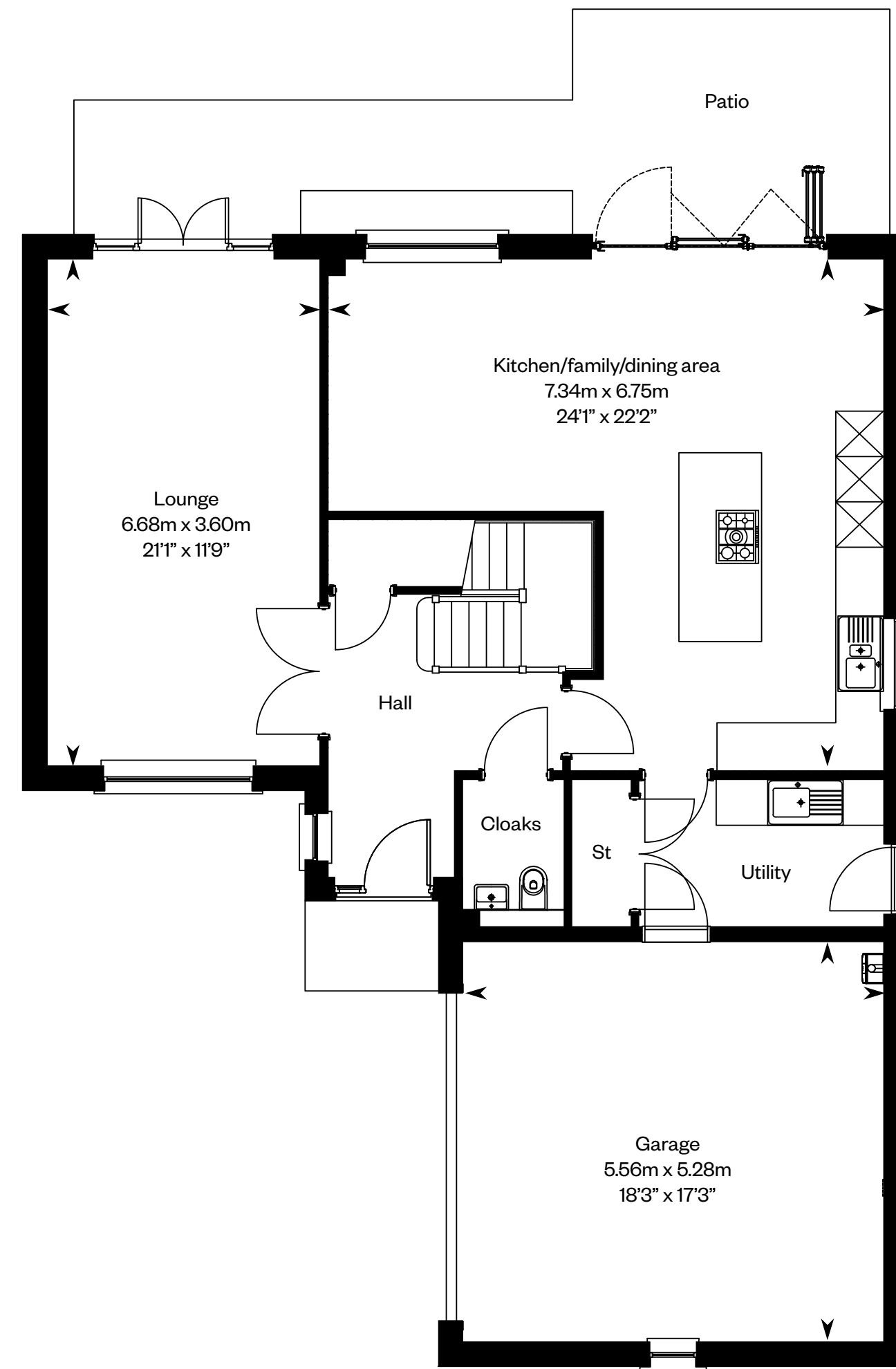
# The Gordon SE

Plots 18, 39, – as shown

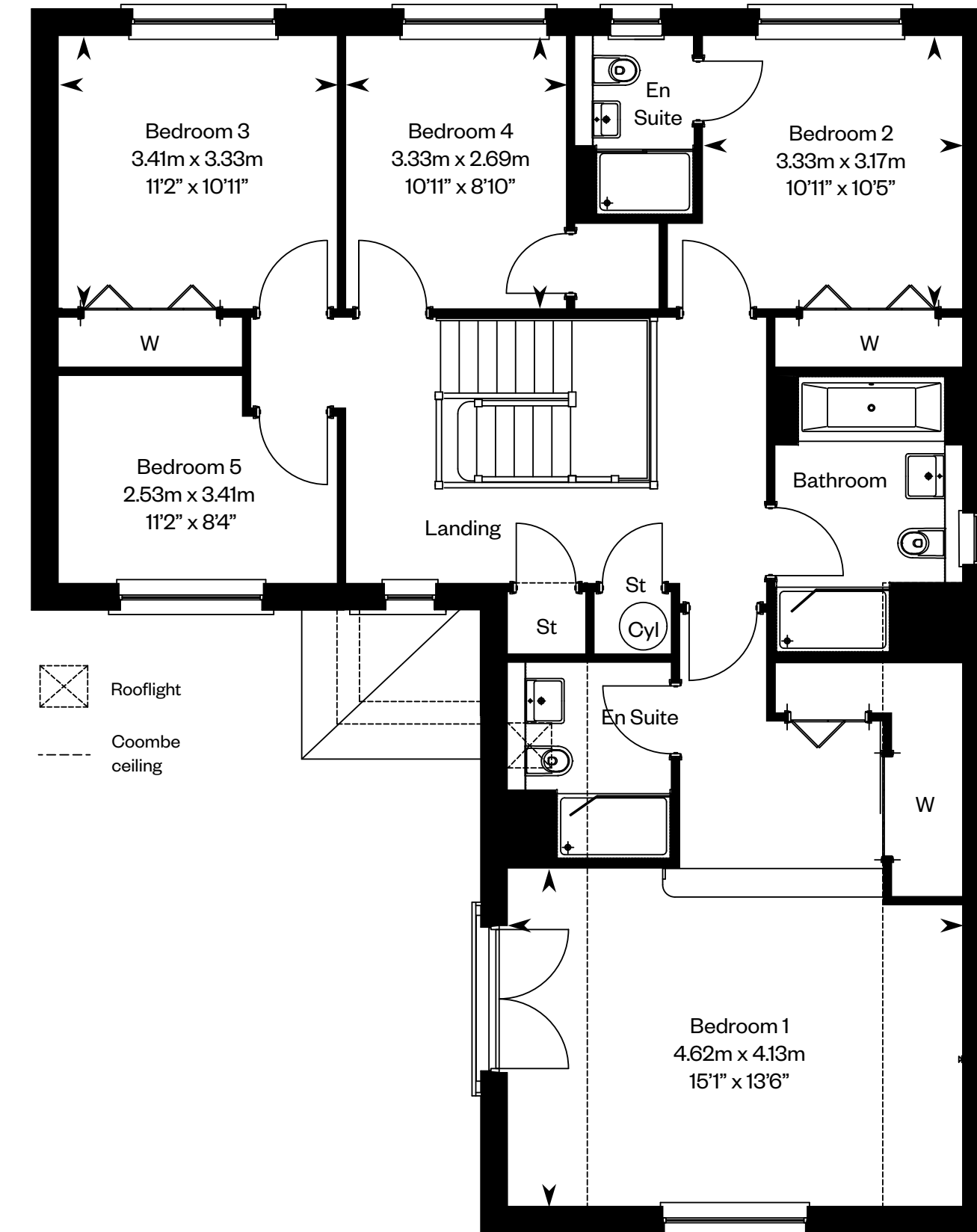
Plots 4, 40 – handed



This is a Predicted Energy Assessment for properties that are incomplete. Once the property is completed, this rating will be updated and an official Energy Performance Certificate will be created for the property. The figure shown is the lowest predicted assessment. Please speak to a Sales Consultant for plot specific details.



Ground floor



First floor

Please note: Plots 18, 39 and 40 are Gordon IC housetypes and have a slightly different layout. Please ask your Sales Consultant for further details. ST: Store cupboard. W: Wardrobe.

**IMPORTANT NOTICE TO CUSTOMERS:** The Consumer Protection from Unfair Trading Regulations 2008. Cala Homes (West) Limited operates a policy of continual product development and the specifications outlined in this brochure are indicative only. The computer generated images and photographs do not necessarily represent the actual finishings/elevation or treatments, landscaping, furnishings and fittings at this development. Information contained is accurate at date of publication on 01.09.22. See the main brochure for the full Consumer Protection statement.



# The Kennedy

5 bedroom detached home

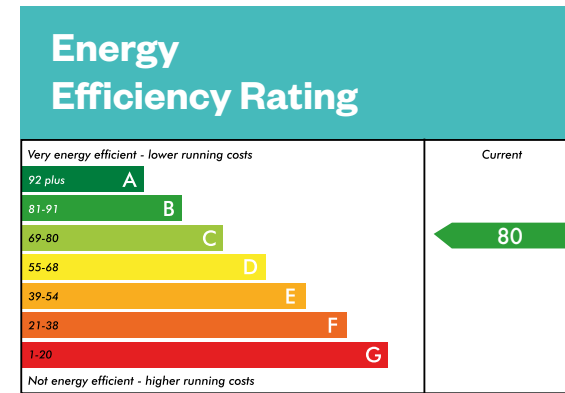


Computer generated image - The Kennedy

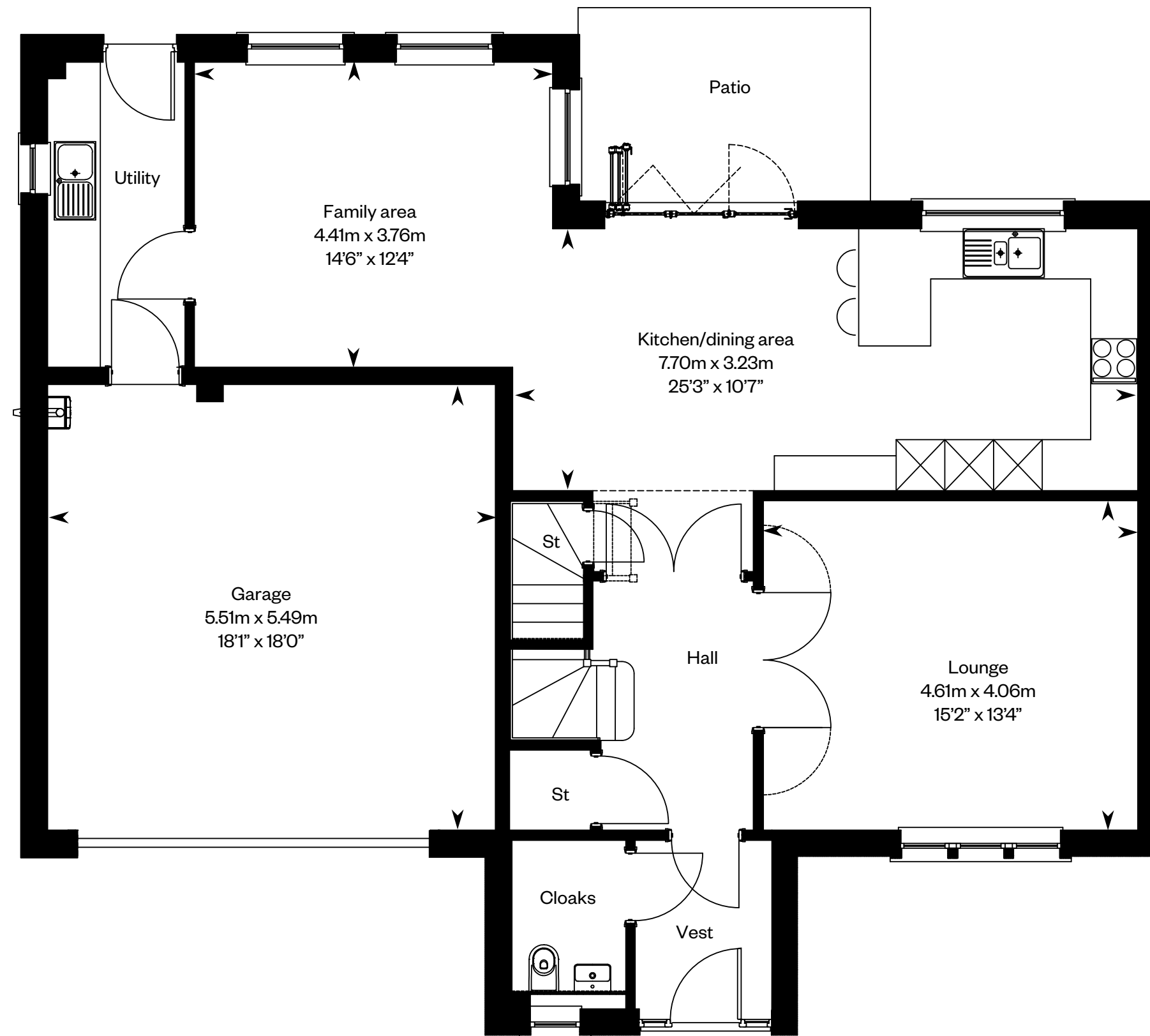
# The Kennedy

Plots 15, 30 – as shown

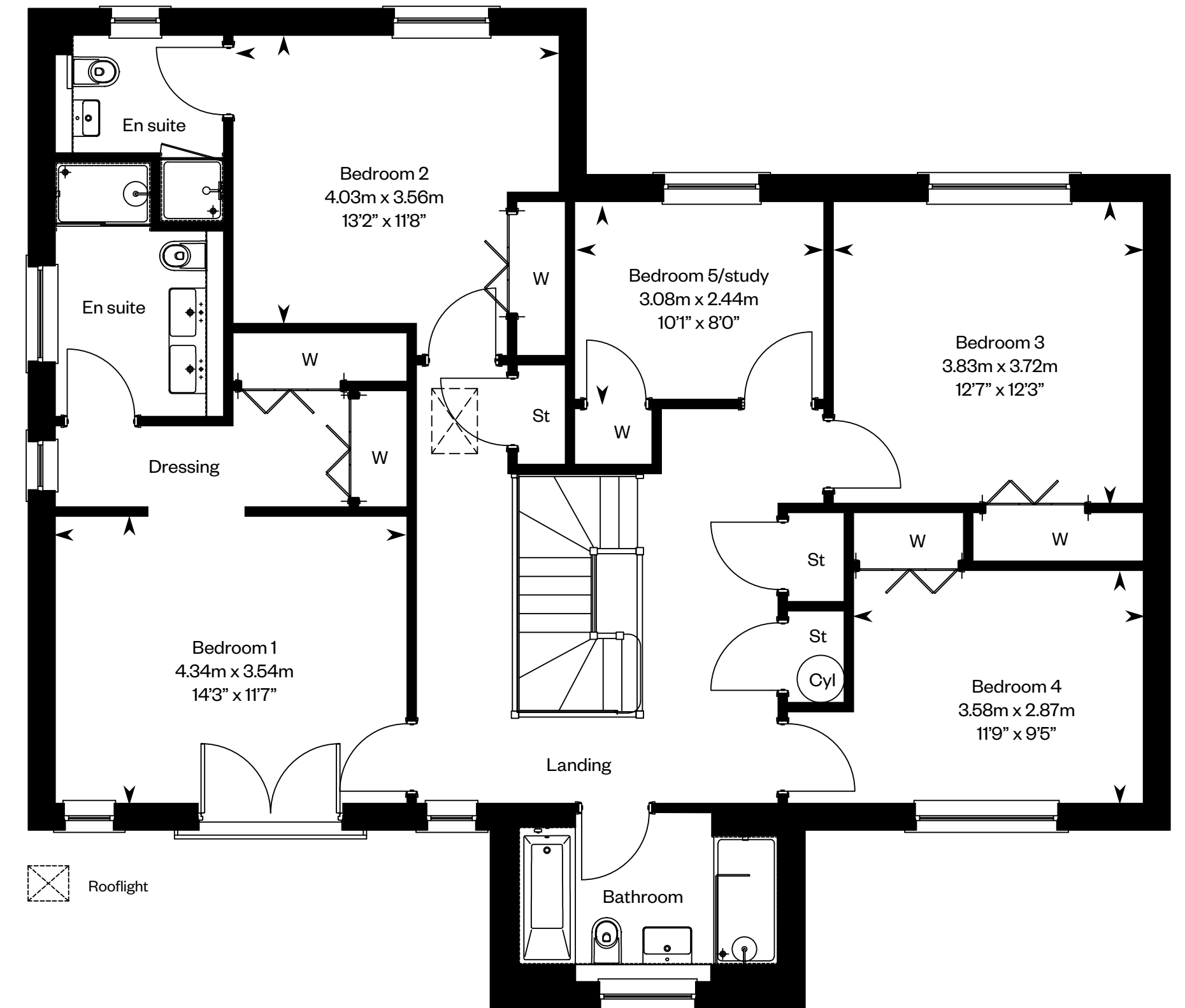
Plot 47 – handed



This is a Predicted Energy Assessment for properties that are incomplete. Once the property is completed, this rating will be updated and an official Energy Performance Certificate will be created for the property. The figure shown is the lowest predicted assessment. Please speak to a Sales Consultant for plot specific details.



Ground floor



First floor

Please ask your Sales Consultant for further details. ST: Store cupboard. W: Wardrobe.

IMPORTANT NOTICE TO CUSTOMERS: The Consumer Protection from Unfair Trading Regulations 2008. Cala Homes (West) Limited operates a policy of continual product development and the specifications outlined in this brochure are indicative only. The computer generated images and photographs do not necessarily represent the actual finishings/elevation or treatments, landscaping, furnishings and fittings at this development. Information contained is accurate at date of publication on 01.09.22. See the main brochure for the full Consumer Protection statement.

# The Lewis

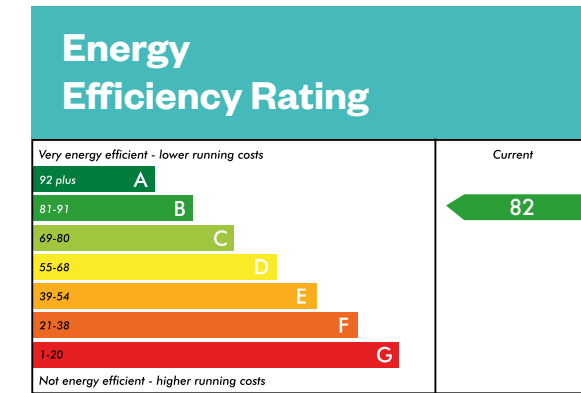
5 bedroom detached home



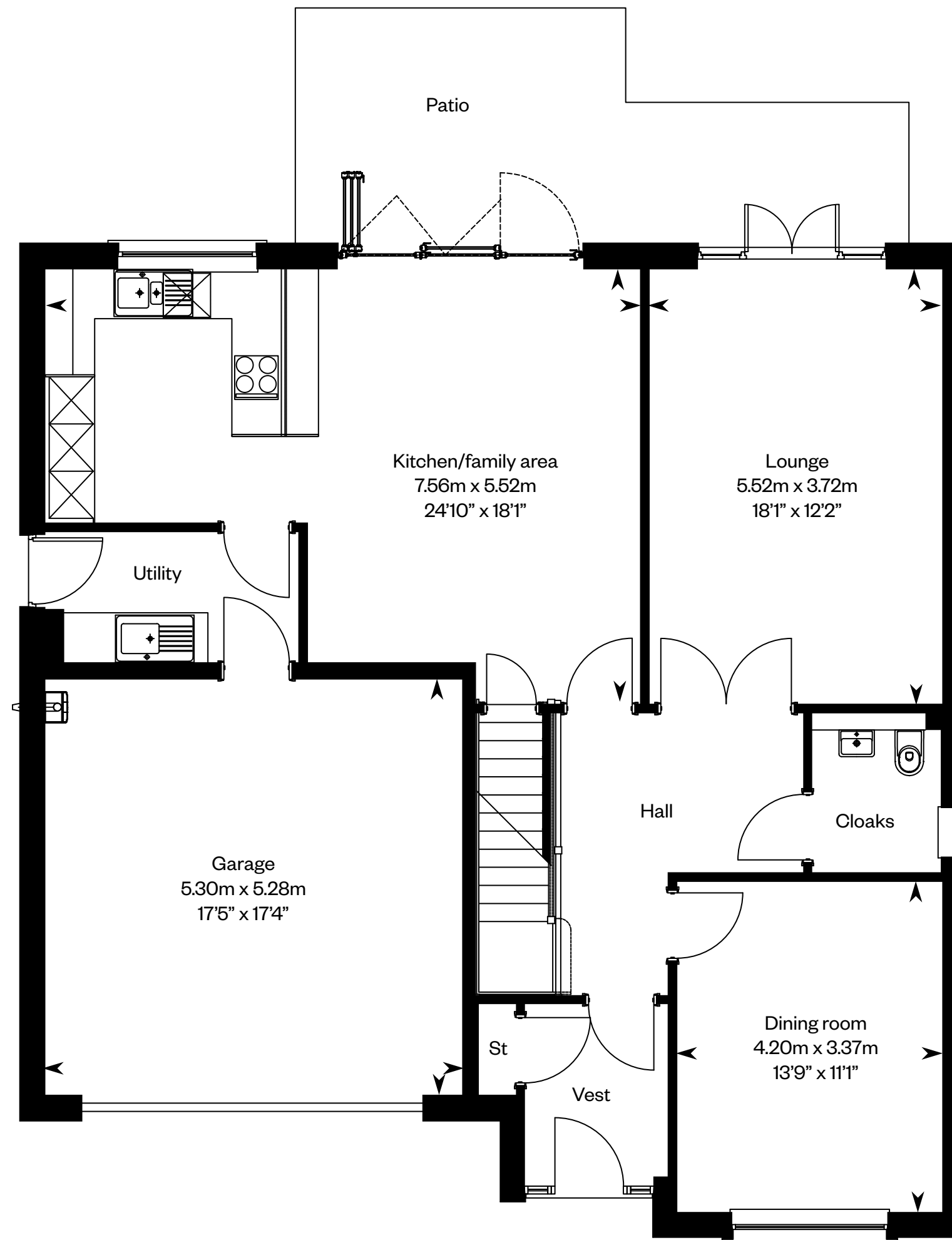
# The Lewis

Plots 1, 8, 17, 41 – as shown

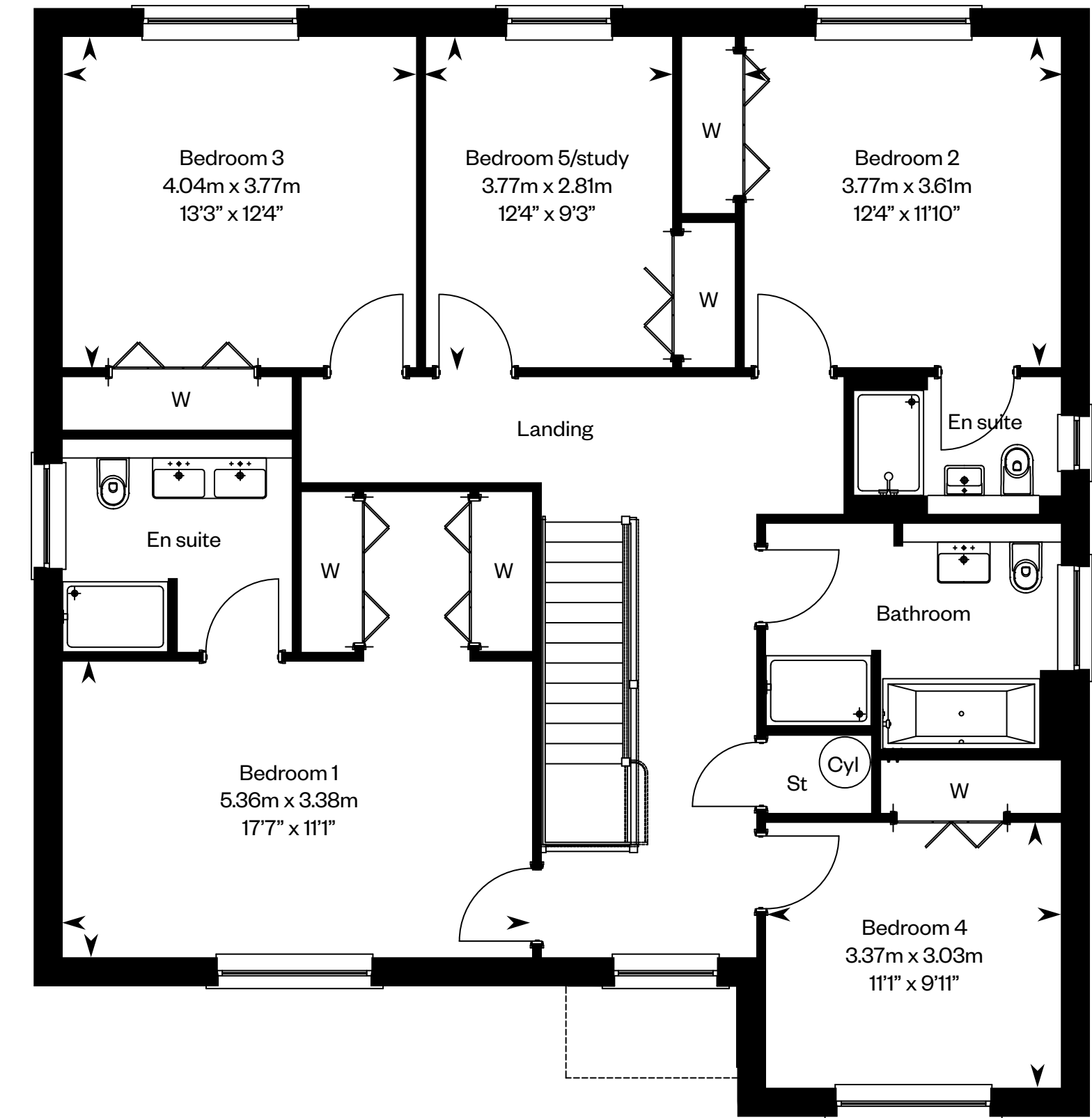
Plots 13, 38, 49 – handed



This is a Predicted Energy Assessment for properties that are incomplete. Once the property is completed, this rating will be updated and an official Energy Performance Certificate will be created for the property. The figure shown is the lowest predicted assessment. Please speak to a Sales Consultant for plot specific details.



Ground floor



First floor

Please ask your Sales Consultant for further details. ST: Store cupboard. W: Wardrobe.

**IMPORTANT NOTICE TO CUSTOMERS:** The Consumer Protection from Unfair Trading Regulations 2008. Cala Homes (West) Limited operates a policy of continual product development and the specifications outlined in this brochure are indicative only. The computer generated images and photographs do not necessarily represent the actual finishings/elevation or treatments, landscaping, furnishings and fittings at this development. Information contained is accurate at date of publication on 01.09.22. See the main brochure for the full Consumer Protection statement.

# The Logan

5 bedroom detached home

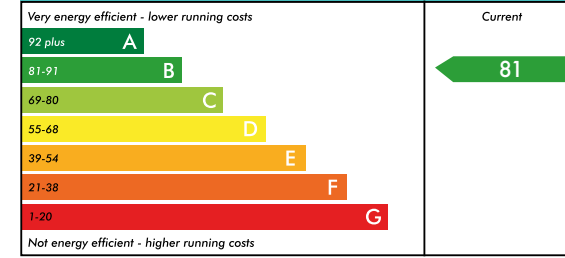


# The Logan

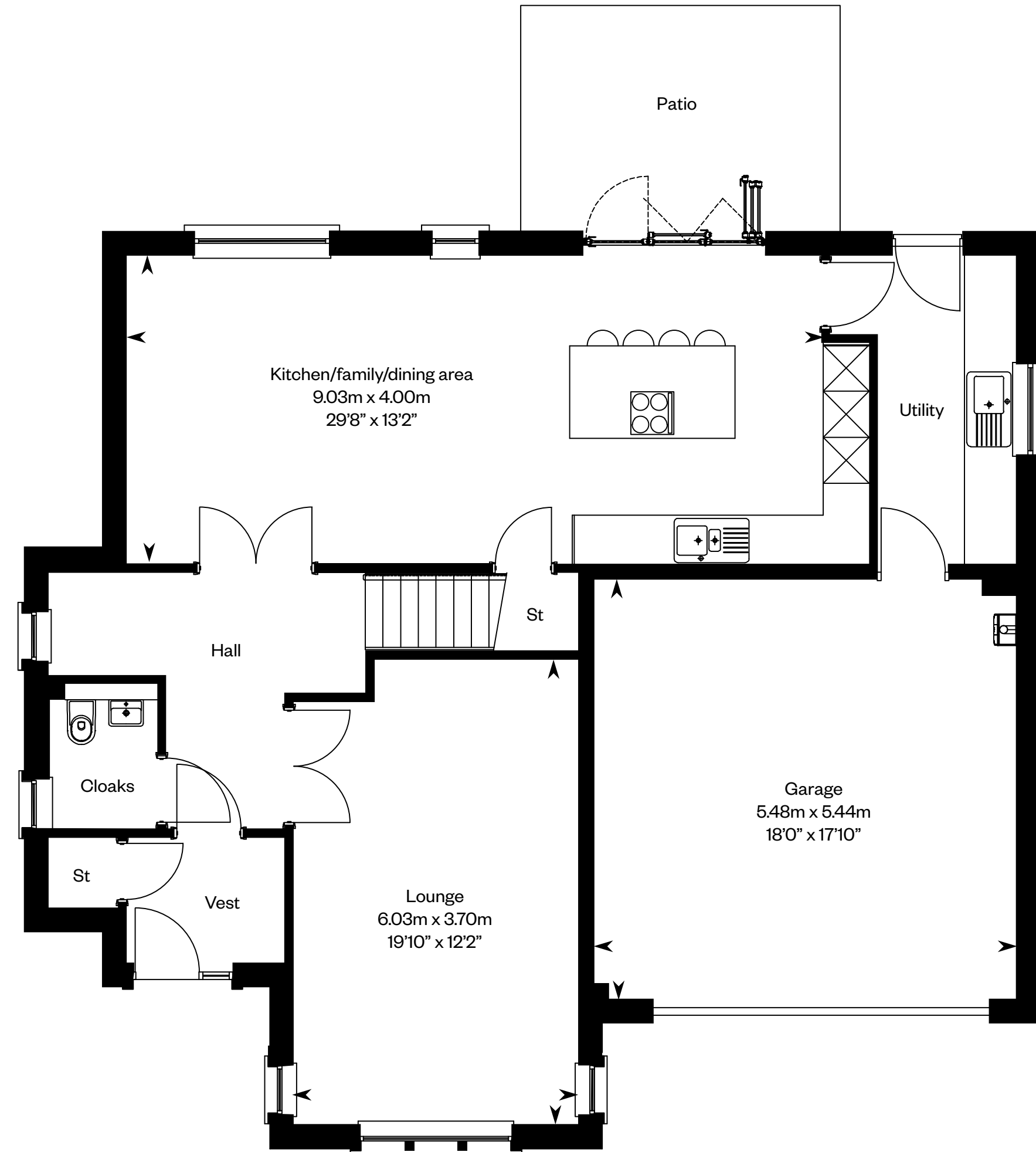
Plots 7, 20, 32, 48 – as shown

Plots 14, 33, 55 – handed

## Energy Efficiency Rating



This is a Predicted Energy Assessment for properties that are incomplete. Once the property is completed, this rating will be updated and an official Energy Performance Certificate will be created for the property. The figure shown is the lowest predicted assessment. Please speak to a Sales Consultant for plot specific details.



Ground floor



First floor

Please ask your Sales Consultant for further details. ST: Store cupboard. W: Wardrobe.

IMPORTANT NOTICE TO CUSTOMERS: The Consumer Protection from Unfair Trading Regulations 2008. Cala Homes (West) Limited operates a policy of continual product development and the specifications outlined in this brochure are indicative only. The computer generated images and photographs do not necessarily represent the actual finishings/elevation or treatments, landscaping, furnishings and fittings at this development. Information contained is accurate at date of publication on 01.09.22. See the main brochure for the full Consumer Protection statement.

# The Melville IC

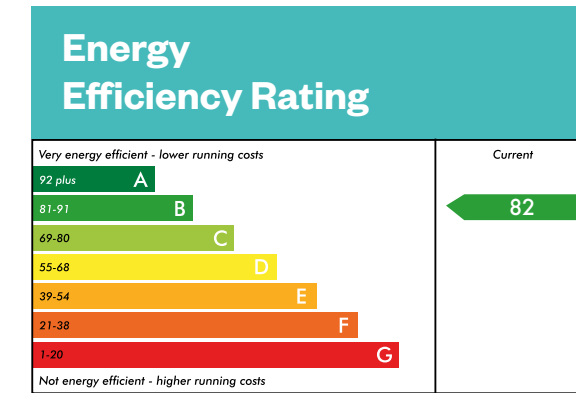
5 bedroom detached home with study



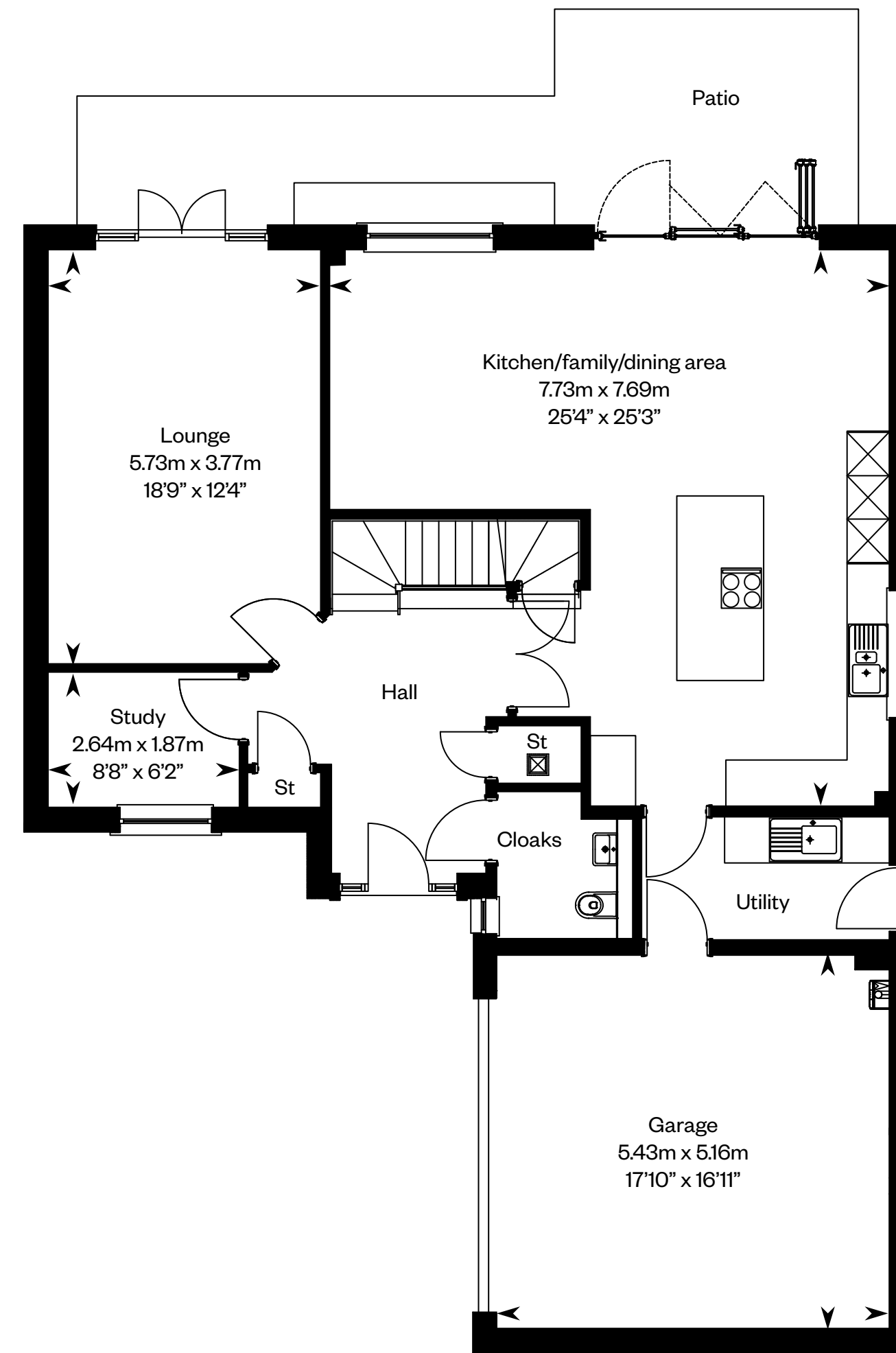
# The Melville IC

Plots 5, 25 – as shown

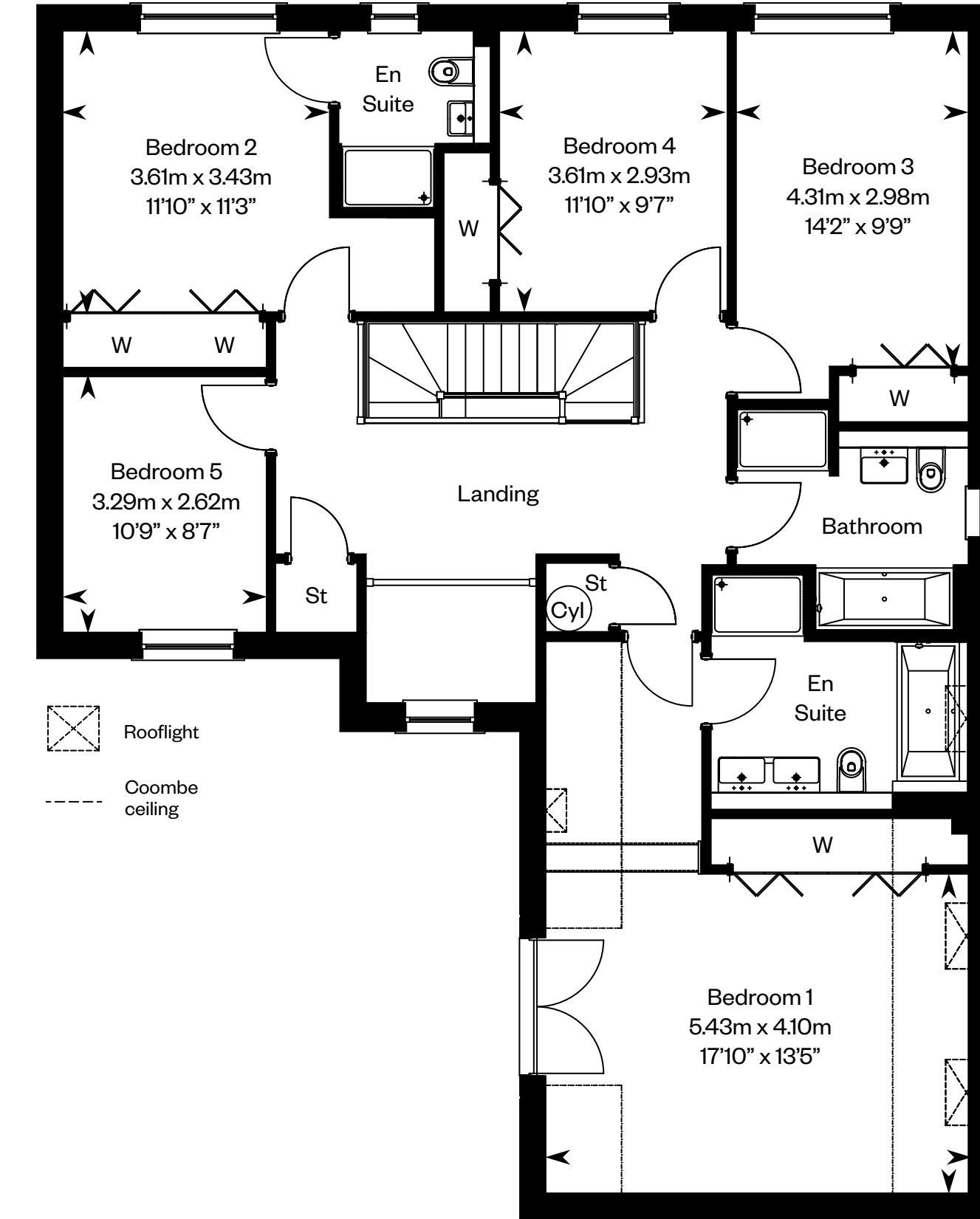
Plots 16, 19, 26 – handed



This is a Predicted Energy Assessment for properties that are incomplete. Once the property is completed, this rating will be updated and an official Energy Performance Certificate will be created for the property. The figure shown is the lowest predicted assessment. Please speak to a Sales Consultant for plot specific details.



Ground floor



First floor

Please ask your Sales Consultant for further details. ST: Store cupboard. W: Wardrobe.

IMPORTANT NOTICE TO CUSTOMERS: The Consumer Protection from Unfair Trading Regulations 2008. Cala Homes (West) Limited operates a policy of continual product development and the specifications outlined in this brochure are indicative only. The computer generated images and photographs do not necessarily represent the actual finishings/elevation or treatments, landscaping, furnishings and fittings at this development. Information contained is accurate at date of publication on 01.09.22. See the main brochure for the full Consumer Protection statement.



# The Moncrief

5 bedroom detached home

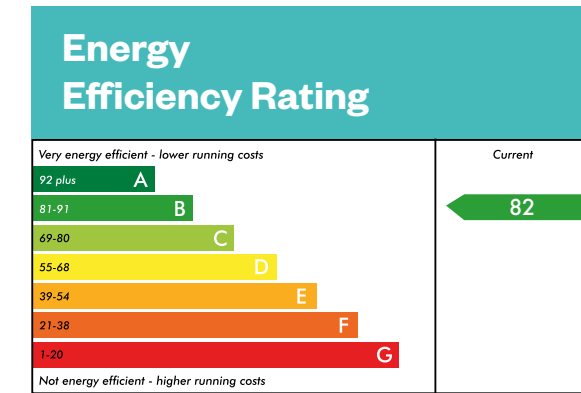


Computer generated image - The Moncrief

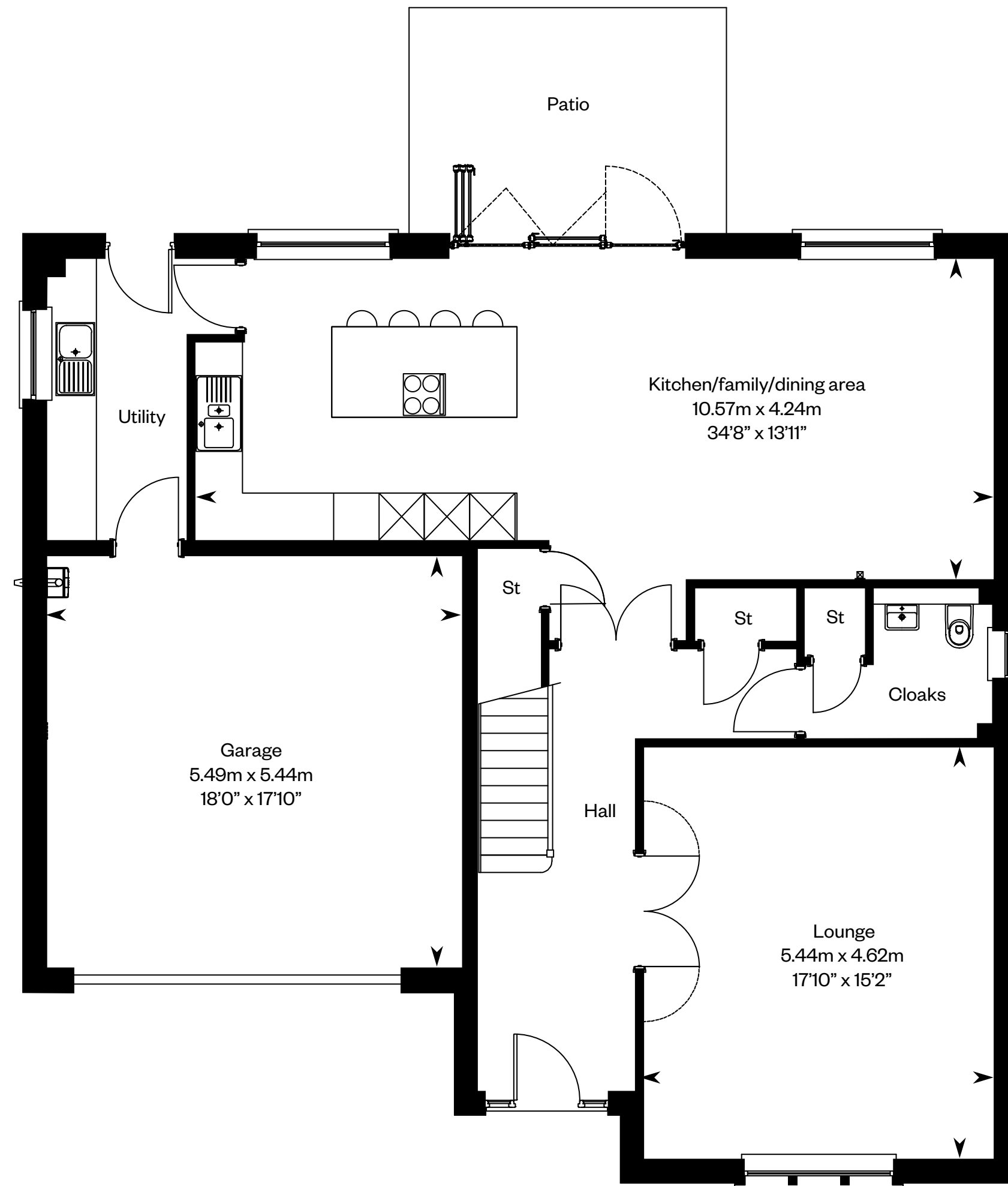
# The Moncrief

Plots 6, 21, 54 – as shown

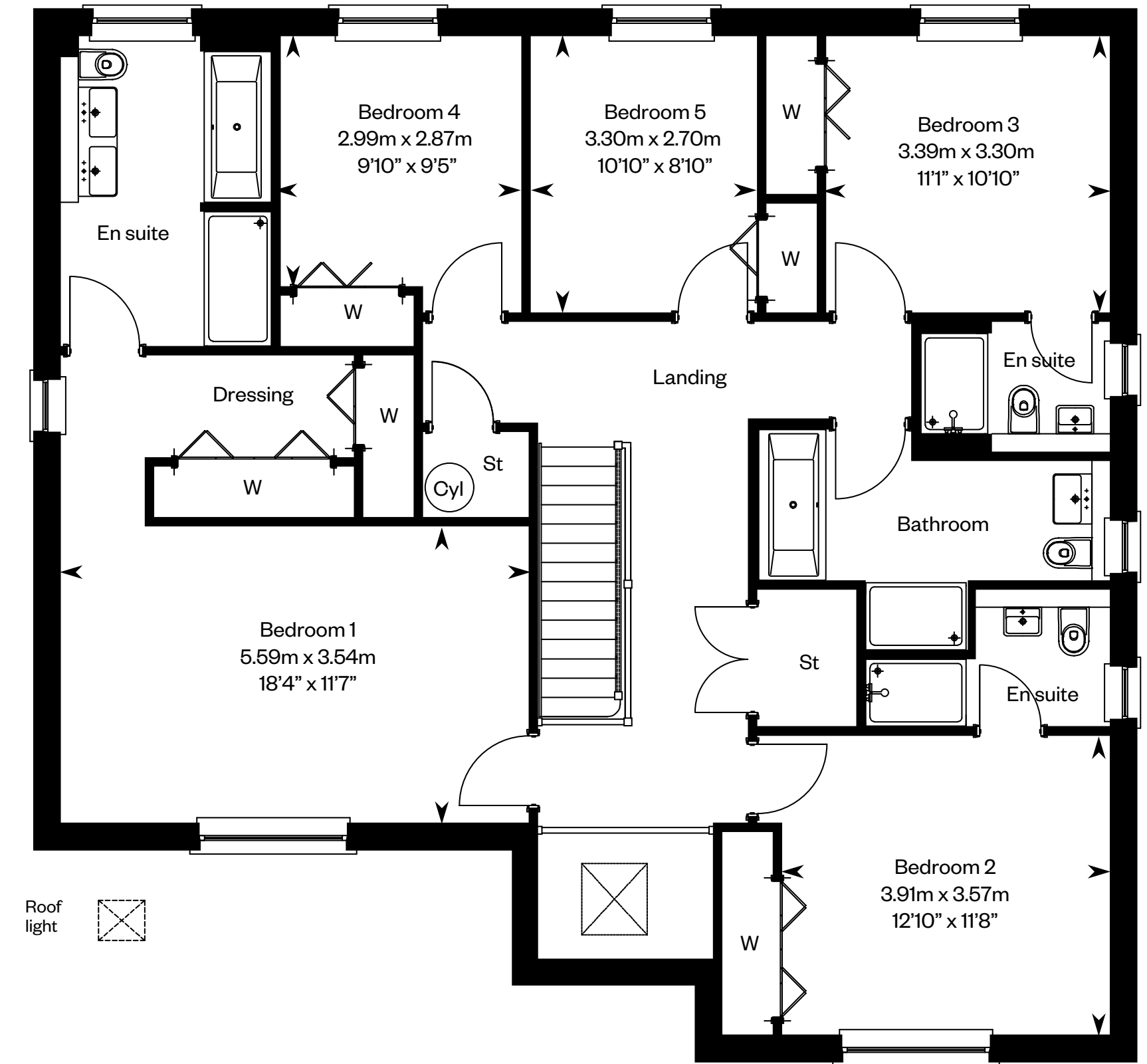
Plot 50 – handed



This is a Predicted Energy Assessment for properties that are incomplete. Once the property is completed, this rating will be updated and an official Energy Performance Certificate will be created for the property. The figure shown is the lowest predicted assessment. Please speak to a Sales Consultant for plot specific details.



Ground floor



First floor

Please ask your Sales Consultant for further details. ST: Store cupboard. W: Wardrobe.

IMPORTANT NOTICE TO CUSTOMERS: The Consumer Protection from Unfair Trading Regulations 2008. Cala Homes (West) Limited operates a policy of continual product development and the specifications outlined in this brochure are indicative only. The computer generated images and photographs do not necessarily represent the actual finishings/elevation or treatments, landscaping, furnishings and fittings at this development. Information contained is accurate at date of publication on 01.09.22. See the main brochure for the full Consumer Protection statement.