



# BRIDGE HOUSE

MIGHTS ROAD, REYDON, IP18 6PS





Bridge House is a wonderfully characterful home and has been renovated over time but still remains intertwined with its history, dating back as far as the 1600's.

**This unique home is situated in a prominent location in Reydon and is one of the longest standing properties in the village. Bridge House was once known as the Bear Inn public house in the early 1800's.**

You enter the property into a convenient enclosed lobby, providing access to both the Sitting room & Dining room. The Sitting room is of particular note, it is a grand room with large feature fireplace and is full of original features. Leading on from the sitting room, to the rear, is the extension providing a great contrast of living, with more modern accommodation. Situated to the rear of the property is a nice sized kitchen with access into garden, Spacious utility room with W/C, useful pantry and also cosy snug with double doors into the garden. The ground floor accommodation is finished with a generously sized drawing room with a spectacular fireplace. The accommodation benefits from a wrap around layout.

Stairs to the first floor landing lead to three double bedrooms and fourth single bedroom. The principal bedroom is spacious size and is

completed with built in storage space, fireplace and large ensuite bath & shower room. The second bedroom provides access to the loft space with built in staircase. The first floor accommodation is finished with a nice size wet room.

The property additionally benefits from off road parking, large landscaped rear garden and good sized boarded cellar.

#### VIEWINGS

Strictly by appointment with the agent's Southwold Office.

#### TENURE- FREEHOLD

#### LOCAL AUTHORITY

East Suffolk Council- Tax Band E

#### EPC- D

#### SERVICES

Mains services are connected. (Durrants has not tested any apparatus, equipment, fittings or services and so cannot verify they are in working order.)







SPACIOUS  
ACCOMMODATION





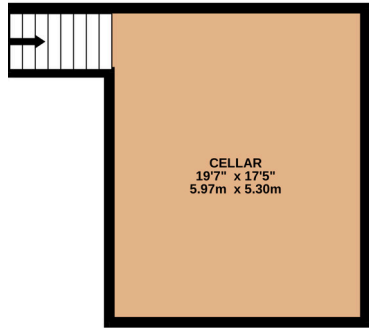




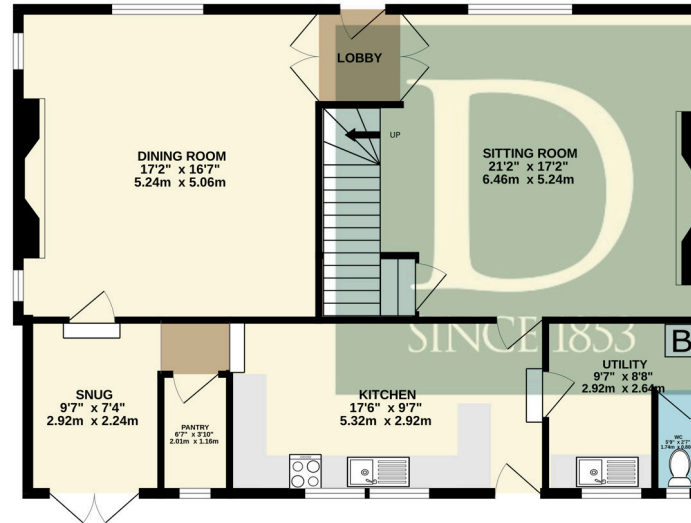


## FLOOR PLAN

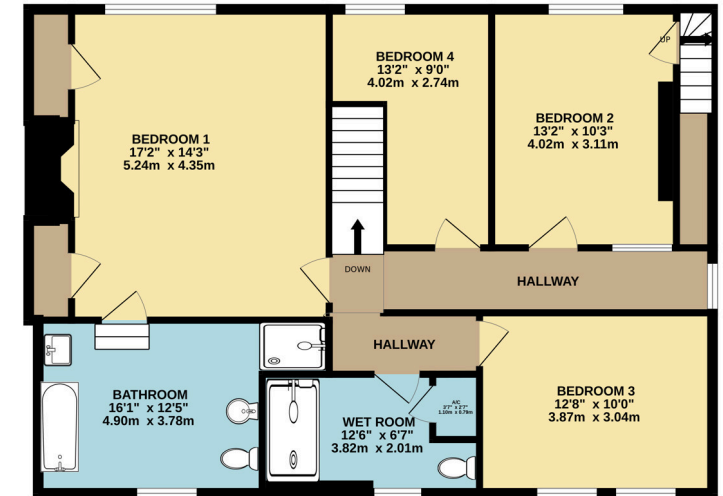
**BASEMENT**  
265 sq.ft. (24.6 sq.m.) approx.



**GROUND FLOOR**  
985 sq.ft. (91.5 sq.m.) approx.



**1ST FLOOR**  
984 sq.ft. (91.4 sq.m.) approx.



TOTAL FLOOR AREA : 2234 sq.ft. (207.5 sq.m.) approx.

Whilst every attempt has been made to ensure the accuracy of the floorplan contained here, measurements of doors, windows, rooms and any other items are approximate and no responsibility is taken for any error, omission or mis-statement. This plan is for illustrative purposes only and should be used as such by any prospective purchaser. The services, systems and appliances shown have not been tested and no guarantee as to their operability or efficiency can be given.  
Made with Metropix ©2024

Residential Agricultural Commercial On Site Auctions Property Management Building Consultancy Auction Rooms Holiday Cottages

### IMPORTANT NOTICE

#### Durrants and their clients give notice that:

- 1.They are not authorised to make or give any representations or warranties in relation to the property either here or elsewhere, either on their own behalf or on behalf of their client or otherwise. They assume no responsibility for any statement that may be made in these particulars. These particulars do not form part of any offer or contract and must not be relied upon as statements or representations of fact.
- 2.Any areas, measurements or distances are approximate. The text, photographs and plans are for guidance only and are not necessarily comprehensive. It should not be assumed that the property has all necessary planning, building regulation or other consents. Durrants have not tested any services, equipment or facilities. Purchasers must satisfy themselves by inspection or otherwise.

### CONTACT US

Durrants, 98 High Street, Southwold,  
Suffolk, IP18 6DP

Tel : **01502 723292**

Email : **southwold@durrants.com**