

IMIST KEY

STN12 NOZZLE
 TEMPERATURE RATING 68°C - 141°C
 DESIGN PRESSURE MINIMUM 2.0 bar
 DESIGN FLOW MINIMUM 6 litres per minute
 ACTIVATION Fast Response Pongluo Bulb

STANDARD FITTING BLOCK FITTING

LIME PLUGGIN FITTING

STX12-2 PUMP UNIT
 *REQUIRED FLOW 13.8 lpm
 MINIMUM REQUIRED PRESSURE 1 bar
 DIMENSIONS (WITHOUT CLEAR SPACE)
 L 500mm
 H 500mm
 D 300mm

*BS8458: 2015 requires additional 15% flow.
 Total flow required 13.8lpm.

IZONE (ZONAL ALARM VALVE SET)
 NORMALLY OPEN CONTACT
 CONNECTOR TO FIRE ALARM PANEL - BY OTHERS
 DIMENSIONS (WITHOUT CLEAR SPACE)
 L 300mm
 H 100mm
 D 80mm
 MAXIMUM ZONE SIZE OF 200 NOZZLES OR 2,400M²

OTHER
 RISER
 3/8" PIPE
 1/2" PIPE

PIPEWORK
 1/2" PIPE
 3/8" PIPE
 1/2" PIPE

HIGH CEILING HEIGHT
 IMPORTANT INFORMATION

PIPEWORK FIXING

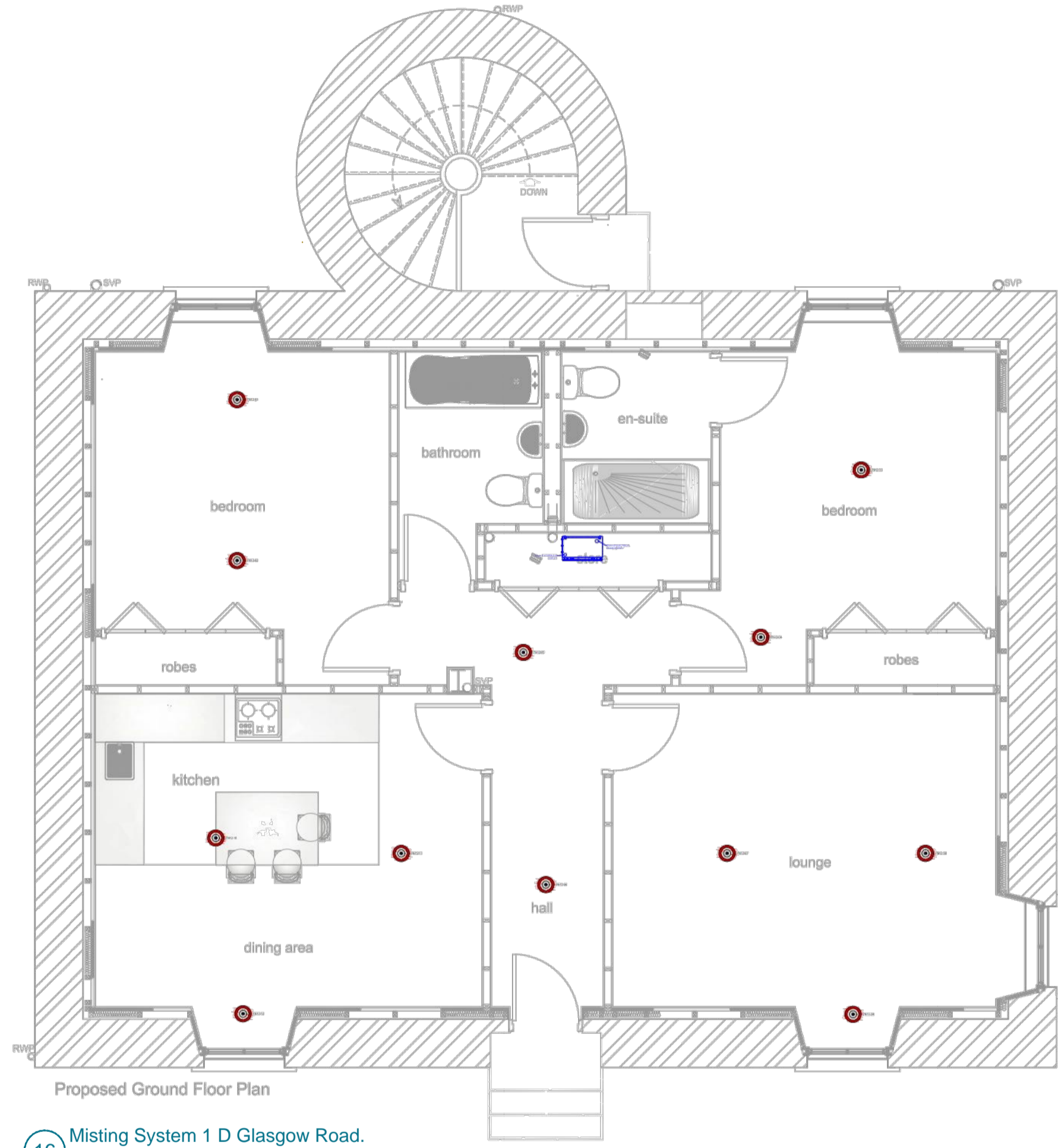
NOZZLE OBSTRUCTION

ELECTRIC & WATER SCHEMATIC

PDV SCHEMATIC

PRODUCTS FOR FULL PROJECT

PRODUCT	QUANTITY
STN12 (STANDARD)	26
STN12-LUM	0
BLOCK-SIDE	0
STN12 ONLY (BS DROP)	0
STX12-2	2
STX12-4	0
STX12-6	0
RISER(S)	2
3/8" IZONE(S)	0
1/2" IZONE(S)	0
3/8" PIPE	100
1/2" PIPE	0
1/2" PIPE	0
RAL COLOUR	



16 Misting System 1 D Glasgow Road.

This drawing is copyright & may not be copied or reproduced in whole or in part without the prior consent of IMIST Ltd. Dimensions must not be scaled from this drawing. All dimensions to be checked on site prior to work or manufacture of any elements taking place. Any discrepancy to be reported to this office.

PRODUCT	QUANTITY
STN12 (STANDARD)	26
STN12-LUM	0
BLOCK-SIDE	0
STN12 ONLY (BS DROP)	0
STX12-2	2
STX12-4	0
STX12-6	0
RISER(S)	2
3/8" IZONE(S)	0
1/2" IZONE(S)	0
3/8" PIPE	100
1/2" PIPE	0
1/2" PIPE	0
RAL COLOUR	

DESIGN SPECIFICATION	BS8458:2015
HAZARD CLASS	DOMESTIC
PUMP DISCHARGE RATE	12 LITRES PER MINUTE
NOZZLE DROP	27MM
WATER SUPPLY	MAINS FED PUMP UNIT

IMIST LTD DESIGN DECLARATION OF CONFORMITY

IMIST LTD CONFIRM THAT THE WATERMIST SYSTEM DESIGN / INSTALLATION WITHIN THE PROTECTED AREA(S) ONLY AND ALL MANUFACTURED WATERMIST EQUIPMENT AND APPLICABLE TO POSITIVE DISPLACEMENT PUMPS ARE IN ACCORDANCE WITH BS 8458: 2015 REQUIREMENTS.

NOTES:
 PUMP LOCATION TO BE SPECIFIED AT SITE VISIT.
 DESIGN PRODUCED IN LINE WITH THE IMIST LTD 'DESIGN AND INSTALLATION MANUAL' (QAT ISSUE 2).
 ANY EXTRA NOZZLES OR LOSS OF NOZZLES WILL NEED TO BE APPROVED BY THE AHJ (AUTHORITY HAVING JURISDICTION).
 PRESSURE AT NOZZLE (STANDING): TOWNS MAINS PRESSURE.
 IMIST ONLY REQUIRE NATURAL VENTILATION PROVIDED BY WINDOWS AND DOORS INSTALLED.
 ALL PIPE TO BE PTFEBS 3/8" SMOOTH BORE STAINLESS STEEL FLEXIBLE HOSE. ALL EXPOSED PIPING TO BE STAINLESS STEEL.
 EXACT NOZZLE LOCATIONS ARE SUBJECT TO CHANGE ON SITE INSTALL/ REVISION CONDITIONS AND COULD BE INSTALLED WITHIN 300MM OF DESIGNED LOCATION UNLESS HIGHLIGHTED OTHERWISE.

TO THE INSTALLER:
 WET PIPE SYSTEM
 SYSTEM TO BE PRESSURE TESTED AS SOON AS POSSIBLE AFTER 1ST FIX COMPLETION
 NOZZLES MUST BE INSTALLED AS SHOWN
 NOZZLE SHOULD BE POSITIONED IN ACCORDANCE WITH OBSTRUCTION GRAPH TO AVOID IMPACT ON DISCHARGE
 P CLIPS TO BE INSTALLED NOMINAL 300MM SUBJECT TO SITE CONDITIONS.
 ALL NOZZLES TO BE INSTALLED OFF TEE BRANCH

TO THE CLIENT:
 IF YOU REQUIRE PIPE IDENTIFICATION TO BS 1710, PLEASE INFORM IMIST BEFORE PROJECT COMMENCEMENT. IDENTIFICATION CAN BE PROVIDED BY IMIST AT A COST.
 IMIST LTD DO NOT ACCEPT AND RESPONSIBILITY FOR DAMAGE CAUSED BY FROST OR FREEZING TEMPERATURES.
 NOTE: IT IS THE CLIENTS RESPONSIBILITY TO TAKE CORRECT PRECAUTIONS TO PREVENT WATER IN THE PIPEWORK/EQUIPMENT FROM FREEZING DUE TO COLD WEATHER.
 IT IS THE CLIENTS RESPONSIBILITY TO INFORM IMIST LTD OF ANY AREAS WHERE THE AMBIENT TEMPERATURE WILL EXCEED 38°C.
 NOTE: PER BS 8458:2015, FOR NORMAL CONDITIONS IN THE UNITED KINGDOM THE WATERMIST NOZZLE TEMPERATURE RATINGS ARE BETWEEN 6°C AND 95°C.
 PIPES, SCAFFOLDING OR ANY OTHER ITEMS OF PLANT MATERIALS MUST NOT AT ANY TIME BE ATTACHED TO OR SUPPORTED FROM ANY PART OF THE FIRE PROTECTION EQUIPMENT, CONTROLS, NOZZLES ETC.
 MINIMUM 1 BAR, MAXIMUM 3 BAR INCOMING PRESSURE TO PUMP OTHERWISE PRESSURE RELIEF VALVE TO BE INSTALLED
 NOZZLES MUST NOT BE PAINTED.
 THIS DRAWING SHOULD BE FULLY CO-ORDINATED WITH ALL OTHER SERVICES AND CONSTRUCTION DRAWINGS INVOLVED IN THIS PROJECT. IMIST LTD SHOULD BE NOTIFIED OF ANY CHANGES WITHIN 7 DAYS OF ISSUE.
 ANY SITE ALTERATIONS REQUIRED AS A RESULT OF LATE CO-ORDINATION OR INFORMATION WILL BE CHARGEABLE.
 THE SQUARE METER IS APPROXIMATE AND IT IS THE CUSTOMERS RESPONSIBILITY TO INFORM IMIST IF THEY HAVE UNDERESTIMATED ROOM/BUILDING SIZES.
 SLEEVES / FIRE STOPPING TO BE INSTALLED BY OTHERS.
 CLIENT TO UNDERTAKE 25MM HOLES THROUGH BEAMS, STRUCTURAL ELEMENTS OR OBSTRUCTIONS.
 ALSO TO CUT 75MM HOLE FOR NOZZLE LOCATION.
 CLIENT TO INSTALL INTERCONNECTING CABLES FROM ALL FLOW SWITCHES AND PUMP RUNNING TERMINAL, TO MAIN FIRE ALARM PANEL TO INITIATE SITE WIDE GENERAL ALARM.
 PLEASE SEE WORKS IN ASSOCIATION SECTION OF YOUR QUOTATION FOR ELECTRICAL AND MECHANICAL REQUIREMENTS OF THE MIST SYSTEM PRIOR TO INSTALLATION.

REV	DESCRIPTION	DATE	DRAWN	CHECKED
0	FOR APPROVAL	25/09/2023	SW	

ISSUED FOR
 CUSTOMER APPROVAL / AHJ APPROVAL / CONSTRUCTION / COMPLETION

PROJECT ADDRESS
 1 Glasgow Road
 Paisley
 Renfrewshire
 PA1 3PX

SCOPE OF WORKS	TITLE
2 DOMESTIC PUMP(S) & 26 NOZZLES	GROUND-FIRST FLOOR LAYOUT

PROJECT NUMBER	023-16459	REV. NO.	0
----------------	-----------	----------	---

IMIST
 re future of fire
 suppression

REGISTERED ADDRESS
 UNIT 11
 PARK ROAD INDUSTRIAL ESTATE
 SWANLEY
 BR8 8AH

CONTACT:
 0808 122 3344
 WWW.IMIST.COM
 SALES@IMIST.COM

24/02	Title: Proposed Conversion of Ground Floor from Offices to Residential Properties
Designed by JMC1	Checked by J Mcl
8 th January 2024	Filename BS24/02
For: Maurice McAlister 1D Glasgow Road PAISLEY PA1 3PX	Misting System Details Drawing No JCM 4
Rev.	Edition ONE Scales: as detailed