



## Hunting Place | | Hounslow | TW5 0NP

Shaw & Co present this gorgeous two-bedroom ground floor flat in Heston. Located one of of Heston's most sought after estates, the property benefits from an allocated parking space, as well as direct access to the gardens.

Conveniently located to various local conveniences such as supermarkets, shops, cafes, restaurants, and ample green spaces. The location benefits from excellent transportation options, including frequent bus services and excellent road connections. Hounslow West, Hounslow Central, and Osterley tube stations are all situated a brief distance from the property, providing easy access to various parts of the city.

Offers In Excess Of £354,950

## Tenure

Leasehold

## Council Tax Band

## Viewing Arrangements

Strictly by appointment

## Contact Details

10 Central Parade  
New Heston Road  
Heston  
Middlesex  
TW5 0LH

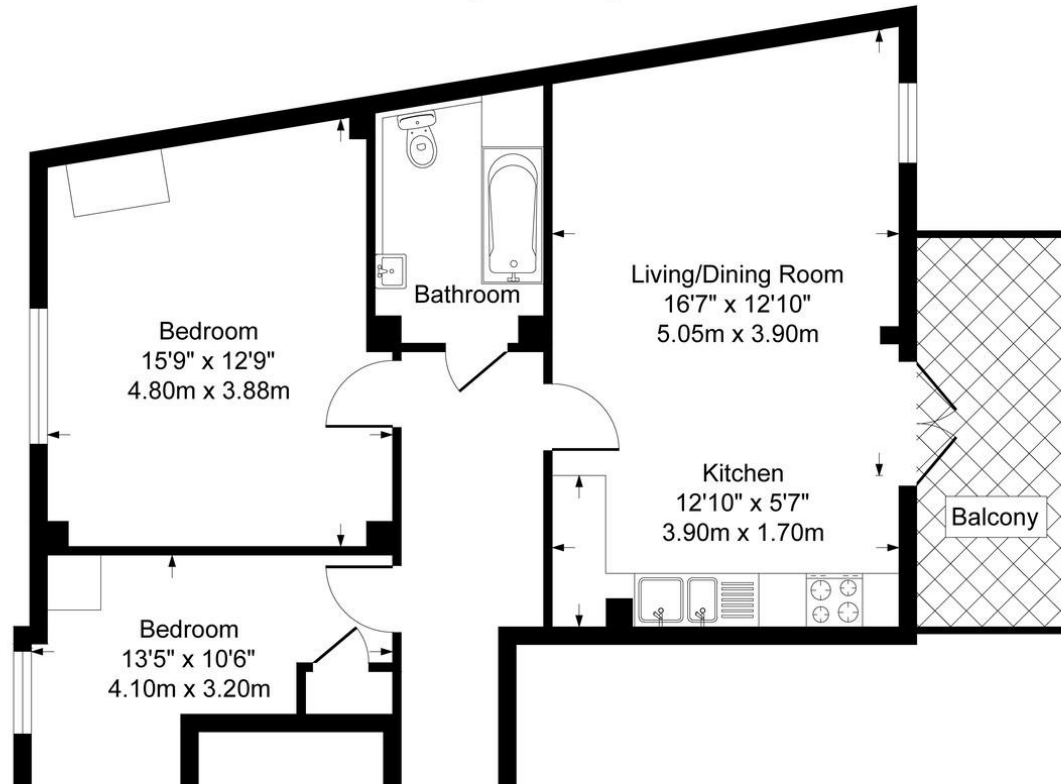
020 8570 7258

heston@shawandcoestates.com

www.shawandcoestates.com



Approximate Gross Internal Area  
724 sq ft - 67 sq m



Score	Energy rating	Current	Potential
92+	A		
81-91	B	85 B	85 B
69-80	C		
55-68	D		
39-54	E		
21-38	F		
1-20	G		

Agents Note: Whilst every care has been taken to prepare these particulars, they are for guidance purposes only. All measurements are approximate and for general guidance purposes only and whilst every care has been taken to ensure their accuracy, they should not be relied upon and potential buyers/tenants are advised to recheck the measurements