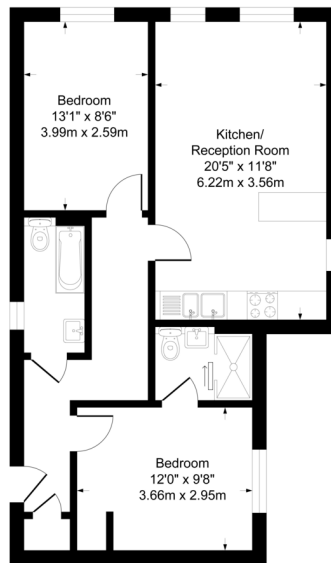






Score	Energy rating	Current	Potential
92+	A		
81-91	B	81 B	81 B
69-80	C		
55-68	D		
39-54	E		
21-38	F		
1-20	G		

Approximate Gross Internal Area
667 sq ft - 62 sq m



First Floor

Although every attempt has been made to ensure accuracy, all measurements are approximate. This floorplan is for illustrative purposes only and not to scale. Measured in accordance with RICS Standards.

Positioned in this private gated development comes this two-bedroom first floor flat, benefitting from under floor heating and en-suite to the main bedroom.

Well presented the property has an open plan kitchen/lounge, a three piece bathroom suite and an allocated parking space.

Ideally located the property is moments away from bus stops, shops and only a short journey to Hounslow West Tube Station. Ideal for first time buyers, please contact us for more information.

Lease – 111 Years
Service Charge - £2472 per annum
Ground Rent - £100 per annum