



14 Clark Way | | Hounslow | TW5 9EG

£544,950

A well presented four bedroom mid terraced family home nestled on this quiet residential location and ideal for a first time buyer. Currently the property has a long lounge, kitchen, dining area and a downstairs shower room. There are also a further two bathrooms, a rear garden and a garage. Ideally situated the property is within minutes away from local schools, bus links and shops. Early viewings are highly recommended.

Tenure

Freehold

Council Tax Band

D

Viewing Arrangements

Strictly by appointment

Contact Details

10 Central Parade
New Heston Road
Heston
Middlesex
TW5 0LH

020 8570 7258

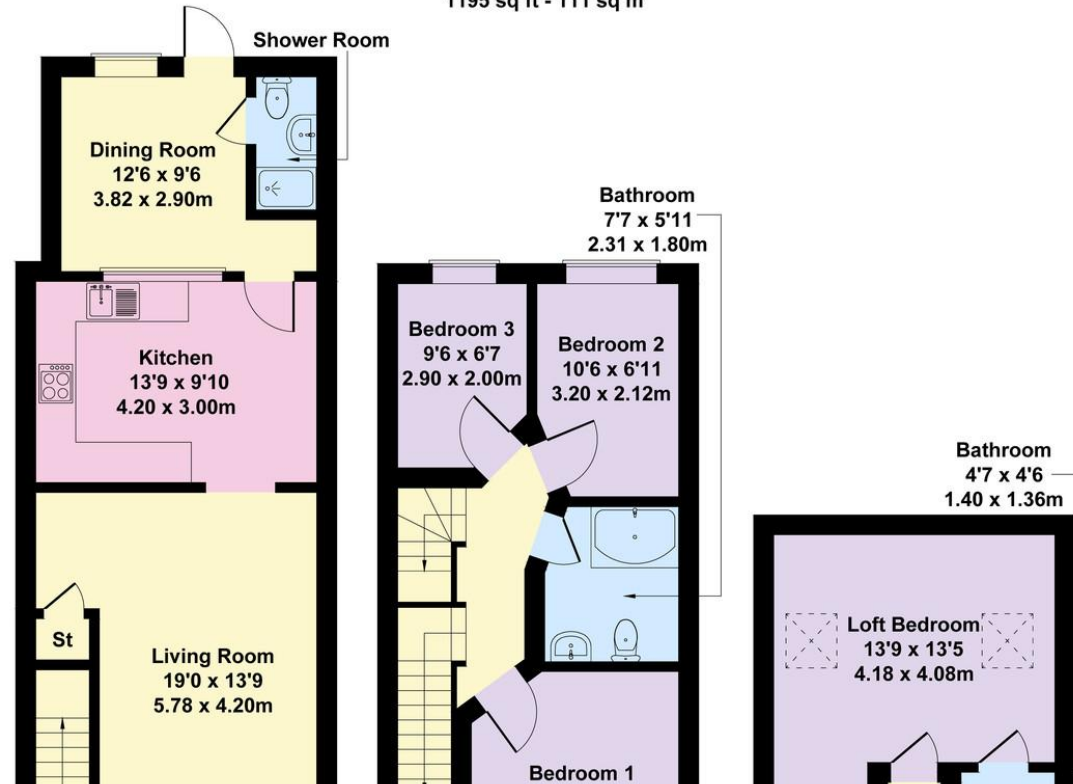
heston@shawandcoestates.com

www.shawandcoestates.com

Clark Way, Hounslow

Approximate Gross Internal Area

1195 sq ft - 111 sq m



%epcGraph_c_1_349%

Agents Note: Whilst every care has been taken to prepare these particulars, they are for guidance purposes only. All measurements are approximate and for general guidance purposes only and whilst every care has been taken to ensure their accuracy, they should not be relied upon and potential buyers/tenants are advised to recheck the measurements.

