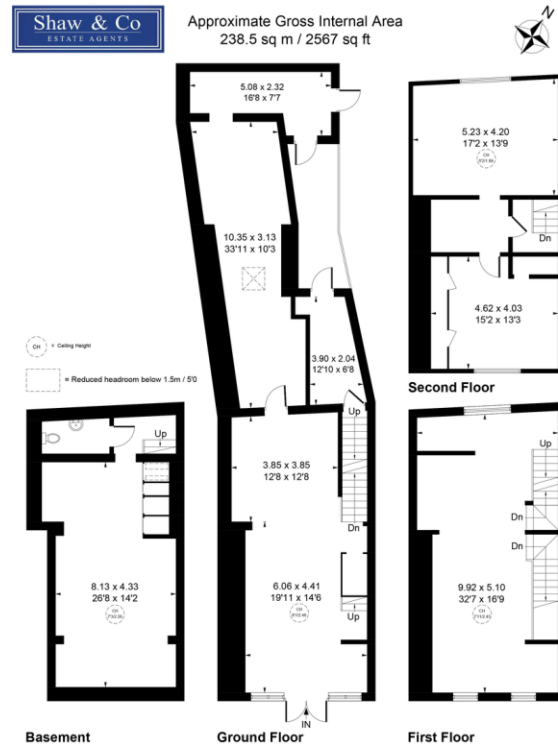
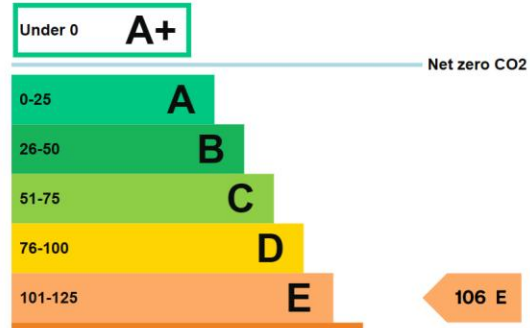






Energy rating and score

This property's current energy rating is E.



Whilst every attempt has been made to ensure the accuracy of the floor plan contained here, measurements of doors, windows, rooms and any other items are approximate and no responsibility is taken for any error, omission, or mis-statement. This plan is for illustrative purposes only and should be used as such by any prospective purchaser.
 © Vision Property Marketing Produced for Shaw & Co.

Vacant Freehold Commercial unit, consisting of ground floor commercial with basement, and first/second floors currently used for storage. The property was previously occupied by a restaurant to the ground floor, with residential accommodation to the first and second floors. The current owners have undergone some renovation works, which have not been completed.

The property is prominently positioned on Church Street. Benefiting from its close proximity to Twickenham Mainline Station (0.3 miles), with direct routes into London Waterloo in under 30 minutes.

The location benefits from significant match day foot fall due to its proximity to Twickenham Stadium. The Twickenham Stadium also holds various sporting and musical events each year.

Church Street is designated as a Pedestrian Zone, which benefits from a comprehensive range of independent and national retailers. Nearby occupiers include Gails, You Me Sushi, Sorrento, Tsaretta Spice, The Fox and The Barny Arms.

GIA extending to 2,567 sqft over 4-floors
 Usage E Class (previously usage A3/A5 restaurant)
 Vacant possession

20 High Street, Whitton, Twickenham,
 TW2 7LT

www.shawandcoestates.com
 0208 894 3646
 whitton@shawandcoestates.com

Agents Note: Whilst every care has been taken to prepare these particulars, they are for guidance purposes only. All measurements are approximate are for general guidance purposes only and whilst every care has been taken to ensure their accuracy, they should not be relied upon and potential buyers/tenants are advised to recheck the measurements