





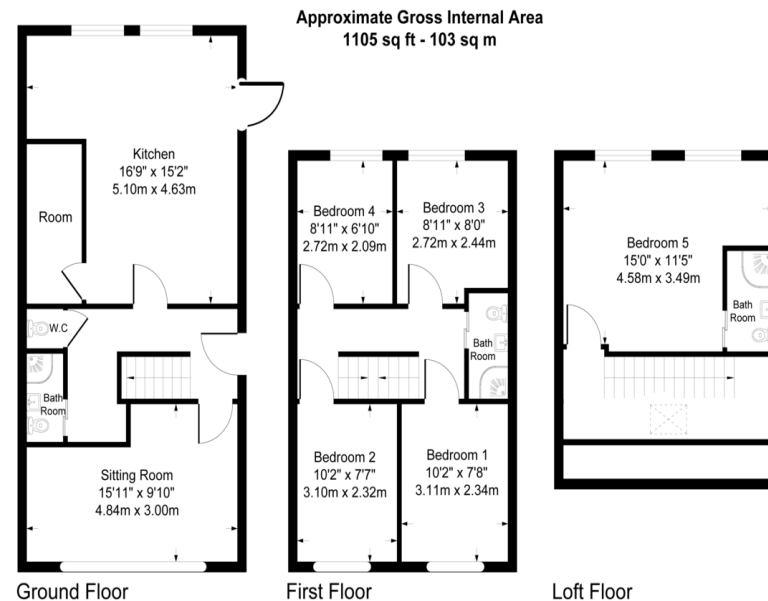


Score	Energy rating	Current	Potential
92+	A		
81-91	B		85 B
69-80	C		
55-68	D	66 D	
39-54	E		
21-38	F		
1-20	G		

Introducing a recently listed property by Shaw & Co: a spacious 5-bedroom house located on Ashdale Close, Whitton. This house boasts three shower rooms and an extended kitchen, making it a fantastic investment opportunity.

Upon entering the house, the ground floor features a reception room, a convenient shower room, a separate W/C, and a spacious kitchen/dining area. Moving to the first floor, you'll find four generously sized bedrooms and an additional shower room. The second floor is home to the fifth bedroom, which comes with its own en-suite bathroom.

This property is offered without a chain, and it also offers the convenience of a driveway with space for two cars and a garage situated in the garden.



Although every attempt has been made to ensure accuracy, all measurements are approximate. This floorplan is for illustrative purposes only and not to scale. Measured in accordance with RICS Standards.