

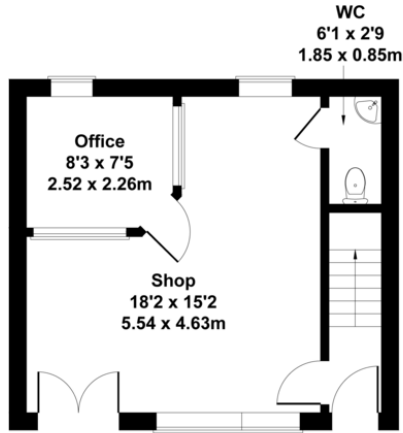




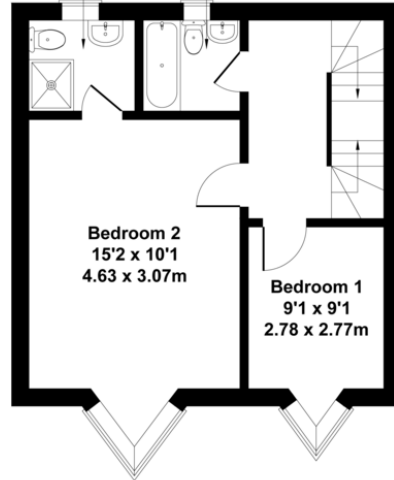
Bell View Court

Approximate Gross Internal Area
1012 sq ft - 95 sq m

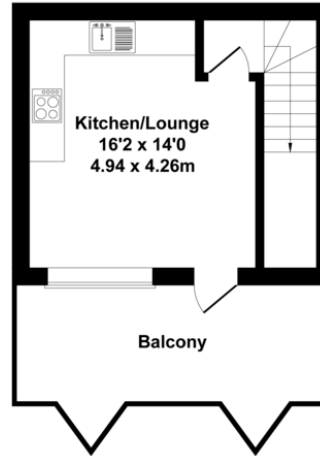
En-suite	Bathroom
6'0 x 4'11	5'9 x 4'11
1.83 x 1.50m	1.76 x 1.49m



GROUND FLOOR



FIRST FLOOR



SECOND FLOOR

Not to Scale. Produced by The Plan Portal 2022
For Illustrative Purposes Only.



%epcGraph_c_1_381%