



Old Park Mews | | Hounslow | TW5 0QX

£255,000

With no onward chain and presented in immaculate condition comes this one bedroom ground floor flat, offering a lease in excess of 900 years and allocated parking. Consisting of a good size lounge, a double bedroom, a separate kitchen and a newly fitted bathroom suite. Positioned in this well maintained modern block, the property is also within easy reach of local schools, bus services, the Great West Road and shops.

For a viewing or further information please contact us

Tenure

Leasehold

Council Tax Band

Viewing Arrangements

Strictly by appointment

Contact Details

10 Central Parade

New Heston Road

Heston

Middlesex

TW5 0LH

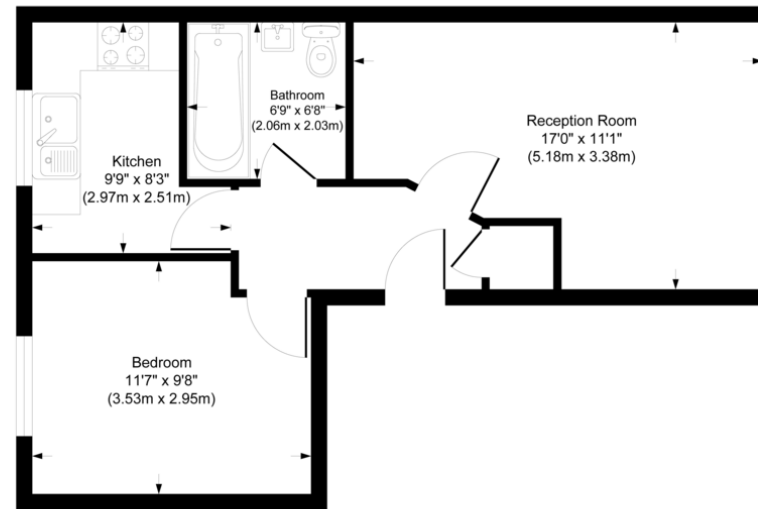
020 8570 7258

heston@shawandcoestates.com

www.shawandcoestates.com



Approximate Gross Internal Area
428 sq ft - 40 sq m



Ground Floor

Although every attempt has been made to ensure accuracy, all measurements are approximate.
This floorplan is for illustrative purposes only and not to scale.
Measured in accordance with RICS Standards. © Outline Photos.

%epcGraph_c_1_349%

Agents Note: Whilst every care has been taken to prepare these particulars, they are for guidance purposes only. All measurements are approximate and for general guidance purposes only and whilst every care has been taken to ensure their accuracy, they should not be relied upon and potential buyers/tenants are advised to recheck the measurements