





****No Onward Chain****

A great opportunity to acquire this exceptional 6-bedroom detached family home. The property is located on this sought-after area, within walking distance to Staines town centre. Spacious and well designed with flexible living space, the property is well suited for family living and entertaining. The accommodation arranged over two floors, features 6 bedrooms, 5 bathrooms, an open plan kitchen and dining room, utility room, a separate living room and an office area. The property also benefits from a private wide garden, driveway parking and a garage for two cars.

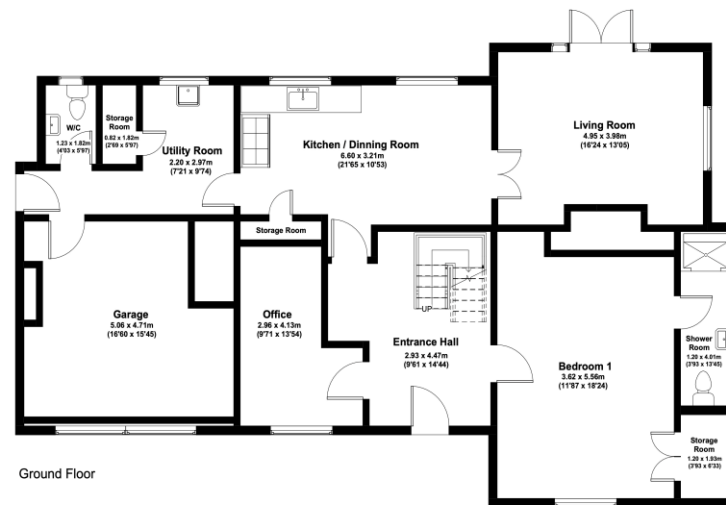
The property is set up as a HMO and all rooms are currently let.

Sold with vacant possession.

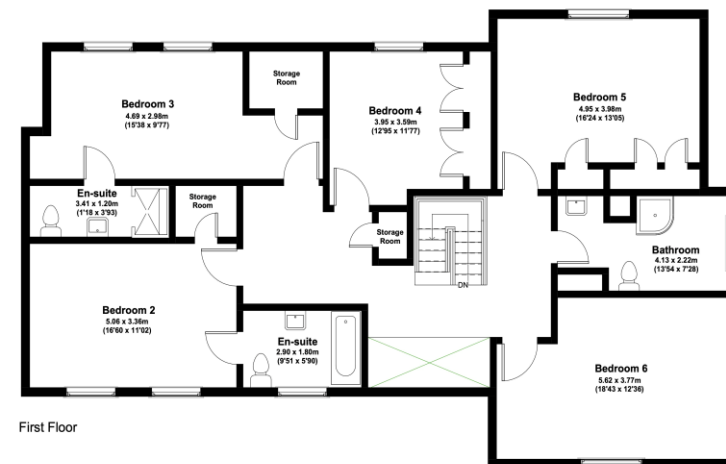
Viewings are highly recommended.



The Tarns, Timsway, Staines
Approximate Gross Internal Area = 286m² (3078sq.ft.)
For indication only - Not to Scale



Ground Floor



First Floor

Score	Energy rating	Current	Potential
92+	A		
81-91	B		
69-80	C	69 c	80 c
55-68	D		
39-54	E		
21-38	F		
1-20	G		