





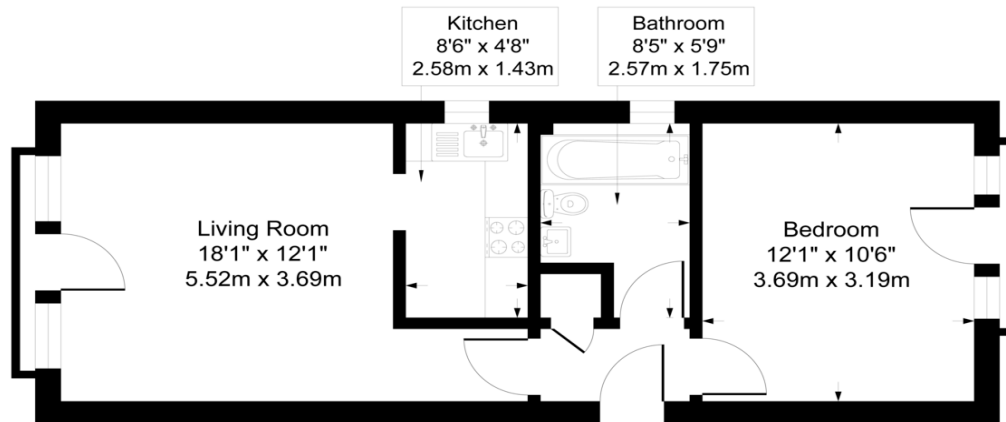
With no onward chain comes this well-kept one bedroom first floor flat with a brand-new lease and parking. Spacious throughout there is an open plan kitchen/lounge, a double bedroom, storage space and a three-piece bathroom. Centrally located the flat is within easy reach of all amenities and also a short distance to Hounslow Overground station.

Ideal for first time buyers, viewings are highly recommended.

Share of Freehold (999 years)

Service Charge £720 per annum

**Approximate Gross Internal Area  
426 sq ft - 40 sq m**



Although every attempt has been made to ensure accuracy, all measurements are approximate. This floorplan is for illustrative purposes only and not to scale. Measured in accordance with RICS Standards.

